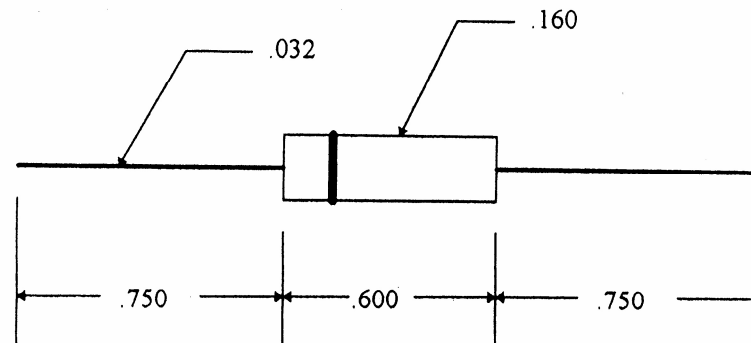


## SUB-MINIATURE SILICON HIGH VOLTAGE RECTIFIER



PART NUMBER	PIV VOLTS	$I_o$ mA @ 40° C	$V_f$ @ $I_o$ @ 25° C	$I_r$ @ PIV @ 25° C	MAX SINGLE CYCLE SURGE CURRENT	$T_{rr}$
BT780-50	5000	300	10	1 uA	25 AMPS	100 nSec
BT780-60	6000	200	15	1 uA	25 AMPS	100 nSec
BT780-70	7000	150	15	1 uA	25 AMPS	100 nSec
BT780-80	8000	130	18	1 uA	25 AMPS	100 nSec
BT780-90	9000	120	18	1 uA	25 AMPS	100 nSec
BT780-100	10000	100	23	1 uA	25 AMPS	100 nSec
BT780-110	11000	100	23	1 uA	25 AMPS	100 nSec
BT780-120	12000	100	23	1 uA	25 AMPS	100 nSec
BT780-130	13000	100	23	1 uA	25 AMPS	100 nSec
BT780-150	15000	100	38	1 uA	25 AMPS	100 nSec
BT780-200	20000	100	45	1 uA	25 AMPS	100 nSec

RECOVERY TIME:  $I_f = 20$  mA,  $iR = 40$  mA RECOVER TO 10 mA

SUFFIX "A" REPRESENTS AVALANCHE CHARACTERISTICS EX: BT780-150A

(203) 467-2591 TEL

(203) 469-5928 FAX

Email: Info@ edal.com

Internet: <http://www.edal.com>

***EDAL*** industries, inc.

51 Commerce St. East Haven, CT 06512