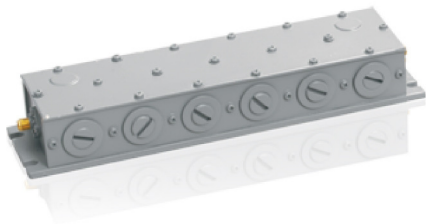




CH Series

Standard Cavity Bandpass Filter



Overview

The CH series filter cover a frequency range from 30 MHz to 3,000 MHz. Percent 3 dB bandwidth ranges from 0.2% to 3%. The CH series uses a helical coil design to achieve lower frequency operation.

Units are available with two through six sections providing a Chebyshev response with low insertion loss. VSWR is less than 1.5:1. Each unit is housed in a high "Q" sturdy aluminum case. Cavities are iris coupled and shielded to minimize RF leakage.

Specifications

	Electrical Specifications	Environmental Specifications
Center Frequency Range	30 to 400 MHz	Shock 5 G's
Min. 3dB Relative Bandwidth (in % of center frequency)	0.5% to 3.0%	Vibration 5 G's
Maximum Insertion Loss at Center Frequency	Consult Factory	Humidity 90%
Nominal Impedance	50/75 Ohms	Altitude Unlimited
Maximum VSWR at Center Frequency	1.5:1	Operating Temperature 0° to 50°C
Stopband Attenuation	Consult Factory	Non-Operating Temperature -54° to +71°C
Number of Sections	2 to 6	
Average Input Power (Watts Max. to 10,000 ft.)	See (1) Below	
Peak Input Power (Watts Max. to 10,000 ft.)	See (1) Below	

(1)Dependent upon center frequency and percent bandwidth. Please consult factory for rated power.

Length (in.) vs. Number of Sections

Sections	L Dim.
2	2.500
3	3.625
4	4.750
5	5.875
6	7.000

Vertical mounting configurations are available.



Need help now? Visit Mtronpti.com and click...

- Request a Quote
- Find a Rep or Distributor
- Contact

Width (in.) vs. Frequency

Frequency Range	W Dim.	D Dim.	H Dim.
30 - 50	3.875	.625	2.625
51 - 65	2.875	.625	1.625
66 - 100	2.375	.625	1.125
101 - 400	1.875	.375	1.125

Connectors

Connector Style	Code	C Dim.
N Female	A	.985
N Male	B	.825
BNC Female	C	.715
BNC Male	D	.850
TNC Female	E	.715
TNC Male	F	.850
SMA Female	K	.375
SMA Male	L	.570
F Type Female	X	.625
Special	S	-

Orlando

2525 Shader Rd
Orlando, FL 32804 USA
Phone: 407-298-2000
Fax: 407-293-2979

Shanghai

Room 2215, 22/F
Tomson Commercial Building
710 Dongfang Road
Pudong, Shanghai, China
Phone: 86-21-6165-2282
Fax: 86-21-6165-2283

Yankton

1703 E. Highway 50
Yankton, SD 57078-0630 USA
Phone: 605-665-9321
Toll Free: 800-762-8800
Fax: 605-665-1709

Asia Pacific

Unit 1108, 11th Floor, APEC Plaza
48 Hoi Yuen Road
Kwun Tong, Kowloon, Hong Kong, China
Phone: 852-2866-8023
Fax: 852-2529-1822

India

Noida
SDF-D3 Zone (NSEZ) Special Economic
Noida - 201305 (U.P.)
New Delhi, India
Phone 91-120-256-2014
Fax: 91-120-256-3242

Europe

Bolwerk 26
Veldhoven – 5509 MH
Netherlands
Phone: 31-40-368-6818
Fax: 31-40-368-3501

MtronPTI may change specifications without notice to improve end application performance or product manufacturability.
No liability is assumed as a result of product use or application.
Please contact MtronPTI for latest information.

Copyright © 2014 MtronPTI