

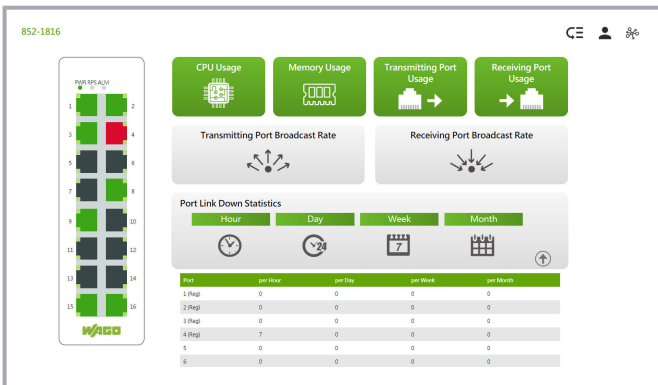
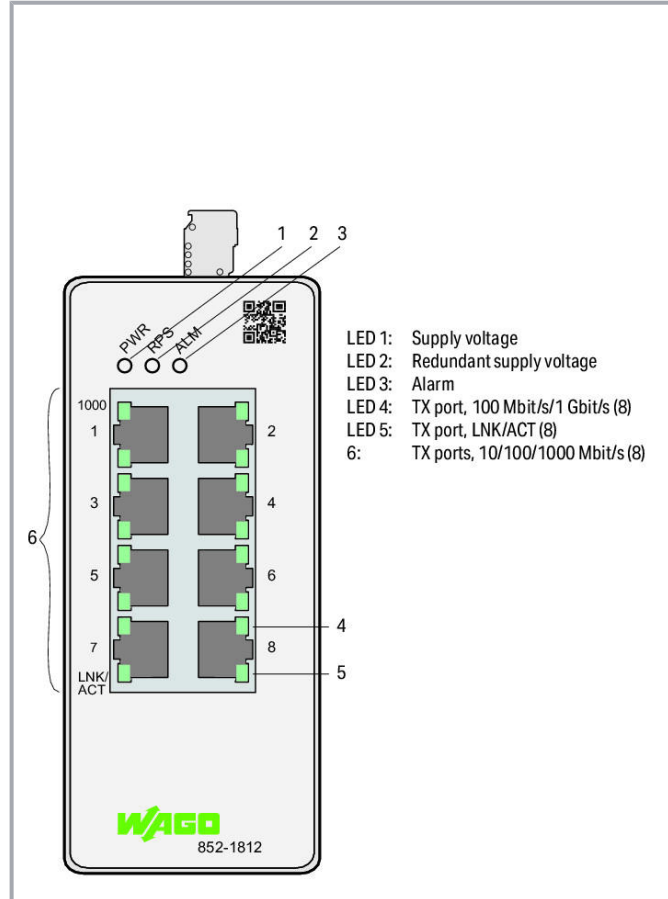
Data sheet | Item number: 852-1812  
 Lean Managed Switch; 8-Port 1000BASE-T; light gray



[www.wago.com/852-1812](http://www.wago.com/852-1812)



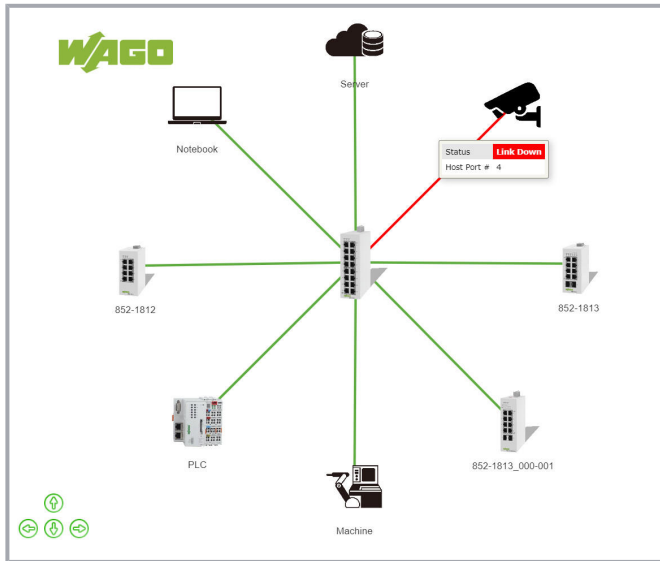
Color: ■■



Subject to changes. Please also observe the further product documentation!

WAGO Kontakttechnik GmbH & Co. KG  
 Hansastr. 27  
 32423 Minden  
 Phone: +49571 887-0 | Fax: +49571 887-169  
 Email: [info.de@wago.com](mailto:info.de@wago.com) | Web: [www.wago.com](http://www.wago.com)

Do you have any questions about our products?  
 We are always happy to take your call at +49 (571) 887-44222.



**Successor model**



**Item no.852-1812/010-000**  
Lean Managed Switch; 8-Port 1000BASE-T; light gray

[www.wago.com/852-1812/010-000](http://www.wago.com/852-1812/010-000)

**Item description**

The 852-1812 is a configurable industrial ETHERNET switch with eight 10/100/1000BASE-T ports. Enclosed in a rugged housing, this switch offers both a redundant power supply and relay-based function monitoring. This device also streamlines network management: Commissioning and diagnostics are intuitive and can be performed without extensive IT knowledge. The topology map clearly displays the switch and connected devices. Key diagnostic information is displayed on the diagnostics dashboard. The following functions increase the robustness, availability and security of the network.

**Security:**

Network segmentation per IEEE802.1Q (max. 5 VLANs), authentication of network devices per IEEE802.1X, firewall functions using the access-control list (max. 32 entries)/service control, port security

**Availability:**

Rapid Spanning Tree Protocol (RSTP) for meshed and ring networks, ETHERNET Ring Protection Switching (ERPS) for up to two rings per switch, loop detection and storm control on each port

**Configuration/Diagnostics/Maintenance:**

Port mirroring, Modbus® registers, SNMP v3, SNMP trap events, alarm threshold, port statistics, backup and restore, system log, syslog server, command line interface with SSH/Telnet, topology map and dashboard

**Data**

**Technical data**

Switching mode	Store-and-forward; non-blocking
Number of 1000BASE-T ports	8

Subject to changes. Please also observe the further product documentation!

WAGO Kontakttechnik GmbH & Co. KG  
Hansastr. 27  
32423 Minden  
Phone: +49571 887-0 | Fax: +49571 887-169  
Email: [info.de@wago.com](mailto:info.de@wago.com) | Web: [www.wago.com](http://www.wago.com)

Do you have any questions about our products?  
We are always happy to take your call at +49 (571) 887-44222.



Communication standards	IEEE 802.3 10BASE-T IEEE 802.3u 100BASE-TX/FX IEEE 802.3ab 1000BASE-T IEEE 802.3x Flow Control IEEE 802.1d Spanning Tree Protocol (STP) IEEE 802.1w Rapid Spanning Tree Protocol (RSTP) IEEE 802.1Q VLAN Tagging IEEE 802.1p Prioritization IEEE 802.1x Port Authentication IEEE 802.1ab Link Layer Discovery Protocol (LLDP) IEEE 802.3az Energy Efficient Ethernet ITU-T G8032v1/v2 Ethernet Ring Protection Switching (ERPS)
Redundancy function	Redundant DC power supply; STP; RSTP; ERPSv1/v2 (max. 2 rings per switch, max. 16 switches per ring, switching time < 800 ms)
Configuration options	DIP switch for signal contact Web-Based Management Command Line Interface SNMPv1/v2c/v3
Diagnostics	Signal contact; Modbus TCP; port status; port statistics; port load; traffic monitor; syslog; SNMP traps; loop detection; diagnostics dashboard; topology map
Security	Access Control List mit max. 32 Einträgen; Port Security; Authentication IEEE 802.1X
MAC table (size)	8000 addresses
Jumbo frame size	10000. Byte
Supply voltage	24 ... 48 VDC; ( $\pm 15\%$ ); 24 ... 48 VDC (UL)
Power consumption (max.)	10 W
ESD (contact/air discharge)	8 KV / 15 KV
Baud rate	Copper cable: 10/1000 Mbit/s
VLAN	Port-based and tag-based (max. 5 VLANs)

## Connection data

Connection technology: communication/fieldbus	Copper cable: 8 x RJ-45
---	-------------------------

## Physical data

Width	50 mm / 1.969 inch
Height	116 mm / 4.567 inch
Depth	100 mm / 3.937 inch

## Mechanical data

Weight	550 g
--------	-------

Subject to changes. Please also observe the further product documentation!

WAGO Kontakttechnik GmbH & Co. KG  
Hansastr. 27  
32423 Minden  
Phone: +49571 887-0 | Fax: +49571 887-169  
Email: [info.de@wago.com](mailto:info.de@wago.com) | Web: [www.wago.com](http://www.wago.com)

Do you have any questions about our products?  
We are always happy to take your call at +49 (571) 887-44222.

Color	light gray
Conformity marking	CE

### Environmental requirements


Surrounding air temperature (operation)	-40 ... 60 °C
Surrounding air temperature (storage)	-40 ... 85 °C
Protection type	IP30
Relative humidity (without condensation)	95 %
Mounting type	DIN-35 rail
Vibration resistance	per IEC 60068-2-6
Shock resistance	per IEC 60068-2-27
EMC immunity to interference	per EN 61000-6-2
EMC emission of interference	per EN 61000-6-4

### Commercial data

PU (SPU)	1 Stück
Country of origin	TW
GTIN	4055144019360
Customs tariff number	85176200000

### Approvals / Certificates

#### UL-Approvals

Logo	Approval	Additional Approval Text	Certificate name
	<b>UL</b> Underwriters Laboratories Inc. (ORDINARY LOCATIONS)	UL 61010-2-201	E175199

### Downloads

#### Documentation

##### Manual

Lean Managed Switch 8 Ports 1000BASE-T	V 1.0.0 2020. 8. 24.	pdf 8.2 MB	Download
---	-------------------------	---------------	----------

Subject to changes. Please also observe the further product documentation!



## Runtime Software

### Firmware

Lean-Managed-Switch; 8-Port 1000BASE-T; lichtgrau	V 02 2021. 7. 21.	zip 8.4 MB	Download
---	----------------------	---------------	----------

---

## CAD/CAE-Data

### CAE data

ZUKEN Portal 852-1812		URL	Download
-----------------------	--	-----	----------

---

### CAD data

2D/3D Models 852-1812		URL	Download
-----------------------	--	-----	----------

---

## Environmental Product Compliance

### Compliance Search

Environmental Product Compliance 852-1812 Lean Managed Switch; 8-Port 1000BASE-T; light gray		URL	Download
---	--	-----	----------

---

## Installation Notes

Subject to changes. Please also observe the further product documentation!