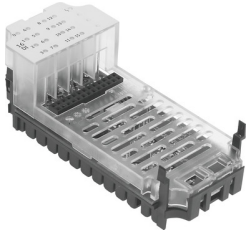


# Input module CPX-16DE

Part number: 543815

FESTO



## Data sheet

Feature	Value
Dimensions W x L x H	(incl. interlinking block and connection system) 50 mm x 107 mm x 50 mm
Type code	CPX
No. of inputs	16
Diagnostics	Short circuit/overload per channel
Parameterization	Input debounce time Signal extension time Response to short circuit Module monitoring
LED indicators	1 group diagnostics 16 channel status
Input debounce time	3 ms (0.1 ms, 10 ms, 20 ms parameterizable)
Fuse protection (short circuit)	Internal electronic fuse per module
DC operating voltage range	18 V ... 30 V
Intrinsic current consumption at nominal operating voltage	Typ. 15 mA
Max. residual current of inputs per module	1.8 A
Nominal operating voltage DC	24 V
Electrical isolation between channel and internal bus	no
Electrical isolation between channels	no
Switching level	Signal 0: $\leq 5$ V Signal 1: $\geq 11$ V
Corrosion resistance class (CRC)	1 - Low corrosion stress (when installed)
Storage temperature	-20 °C ... 70 °C
Degree of protection	Depends on manifold block
Ambient temperature	-5 °C ... 50 °C
Product weight	41 g
Input characteristics	IEC1131-T2
Input switching logic	PNP (positive switching)
Housing material	PA-reinforced PC