

## Features

- 25 dB Small Signal Gain
- 43 dBm Third Order Intercept Point (OIP3)
- >2 W Output P1dB
- 34.5 dBm Saturated Output Power
- Integrated Power Detector
- Bias 1330 mA @ 6 V
- Lead-Free 7 mm Cavity Package
- RoHS\* Compliant and 260°C Reflow Compatible

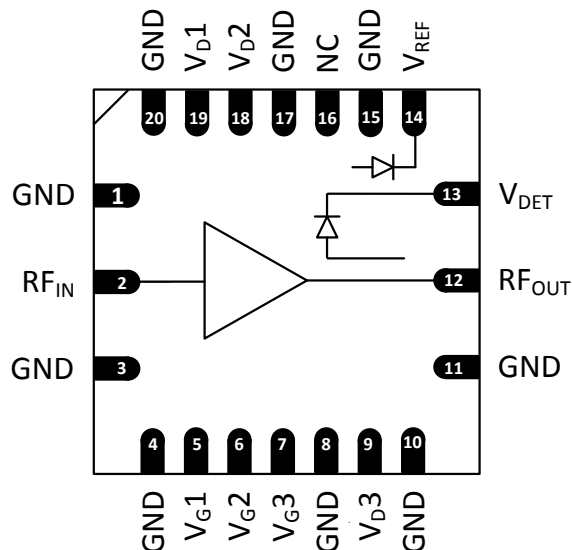
## Description

The MAAP-011145 is a power amplifier assembled in a 7 mm surface mount package with a temperature compensated integrated power detector operating from 17.65 to 19.75 GHz. The circuit provides 25 dB gain, 43 dBm OIP3, 2 W P1dB and 34.5 dBm saturated output power.

The device includes ESD protection and by-pass capacitors to ease the implementation and volume assembly of the packaged part.

This power amplifier is specifically designed for use in point-to-point radios for cellular backhaul applications in the 18 GHz band.

## Functional Schematic



## Pin Configuration<sup>2</sup>

Pin No.	Function	Pin No.	Function
1	Ground	11	Ground
2	RF Input	12	RF Output
3	Ground	13	Power Detector
4	Ground	14	Reference
5	Gate 1 Bias	15	Ground
6	Gate 2 Bias	16	No Connection
7	Gate 3 Bias	17	Ground
8	Ground	18	Drain 2 Bias
9	Drain 3 Bias	19	Drain 1 Bias
10	Ground	20	Ground
		21 <sup>3</sup>	Paddle

## Ordering Information<sup>1</sup>

Part Number	Package
MAAP-011145	Bulk Quantity
MAAP-011145-TR0500	500 Piece Reel
MAAP-011145-001SMB	Sample Board

1. Reference Application Note M513 for reel size information.

2. All "No Connection" pins should be grounded.  
3. The exposed pad centered on the package bottom must be connected to RF, DC and thermal ground.

\* Restrictions on Hazardous Substances, European Union Directive 2011/65/EU.

**Electrical Specifications:  $V_{DD} = 6\text{ V}$ ,  $I_{DQ}^4 = 1330\text{ mA}$ ,  $T_A = +25^\circ\text{C}$**

Parameter	Units	Min.	Typ.	Max.
Small Signal Gain	dB	22.7	26	28.3
Gain variation over temp	dB	—	±1.7	—
Output IP3, +20 dBm SCL	dBm	40.5	44	—
Output IP3, +24 dBm SCL	dBm	37.5	42	—
OIP3 variation over temp	dB	—	±1.0	—
$P_{SAT}$	dBm	33.2	34.5	—
$P_{SAT}$ variation over temp	dBm	—	±0.2	—
P1dB	dBm	—	34	—
Input Return Loss <sup>5</sup>	dB	8	15	—
Output Return Loss <sup>5</sup>	dB	8	10	—
Detector $V_{DIFF}$ , $P_{OUT} = +20\text{ dBm}^{5,7}$	V	0.5	1.1	1.7
Noise Figure <sup>5</sup>	dB	—	7	8
Gain Dynamic Range (>20 mA/dB) <sup>6</sup>	dB	12	—	—
Noise Figure at Gain Regulation <sup>6</sup>	dB/dB	—	—	0.4
OIP3 at Gain Regulation <sup>6</sup>	dB/dB	—	—	1.3
$P_{SAT}$ at Gain Regulation <sup>6</sup>	dB/dB	—	—	0.2
Isolation (S21 at $V_G$ off) <sup>5</sup>	dB	—	—	-15
Gain Ripple over frequency <sup>5</sup>	dB	—	2	3
Power consumption @ $P_{OUT} \leq 27\text{ dBm}$	W	—	—	8.4
Power variation over temp <sup>5</sup>	dB/°C	—	—	0.02
Gate Voltage	V	—	-1.0	-0.8
Detector Output Voltage range <sup>5,7</sup>	mV	10	—	4000
Detector Measure Range <sup>5,7</sup>	dBm	-8	—	30
Detector Precision <sup>5,7</sup>	mV/dB	2	—	—

4. Adjust  $V_{G1}$ ,  $V_{G2}$  and  $V_{G3}$  between -1.2 and -0.8V to achieve specified  $I_{DQ}$  ( $I_{DQ} = I_{D1} + I_{D2} + I_{D3}$ ).  $V_{G1}$ ,  $V_{G2}$  and  $V_{G3}$  are nominally the same voltage.
5. Only guaranteed on MACOM probe board.
6. May require adjusting the current on each stage separately.
7. Detector only tested @ 20 dBm/SCL at production

## Absolute Maximum Ratings<sup>8, 9, 10</sup>

Parameter	Rating
Input Power	18 dBm
Drain Voltage ( $V_D$ 1,2,3)	+7 V
Gate Voltage ( $V_G$ 1,2,3)	-3 V to -0.74 V
Drain to Gate Voltage ( $V_D-V_G$ )	+10 V
Current ( $I_{DQ} = I_{D1}+I_{D2}+I_{D3}$ )	2000 mA
Detector Pin	+6 V
Detector Reference Pin	+6 V
Detector $P_{OUT}$	35 dBm
Junction Temperature	+175°C
Storage Temperature	-65°C to +150°C

8. Exceeding any one or combination of these limits may cause permanent damage to this device.  
 9. MACOM does not recommend sustained operation near these survivability limits.  
 10. Operating at nominal conditions with  $T_J \leq +150^\circ\text{C}$  will ensure  $\text{MTTF} > 1 \times 10^6$  hours.

## Maximum Operating Ratings<sup>11, 12</sup>

Parameter	Rating
$P_{DISS}$	11.2 W
Junction Temperature	+150°C
Operating Temperature	-40°C to +85°C

11. Channel temperature directly affects device MTTF. Channel temperature should be kept as low as possible to maximize lifetime. Thermal resistance,  $\Theta_{jc}$ , is 5.8 °C/W.  
 12. For saturated performance, it is recommended that the sum of  $(2V_{DD} + \text{abs}(V_{GG})) < 15$  V.

## Handling Procedures

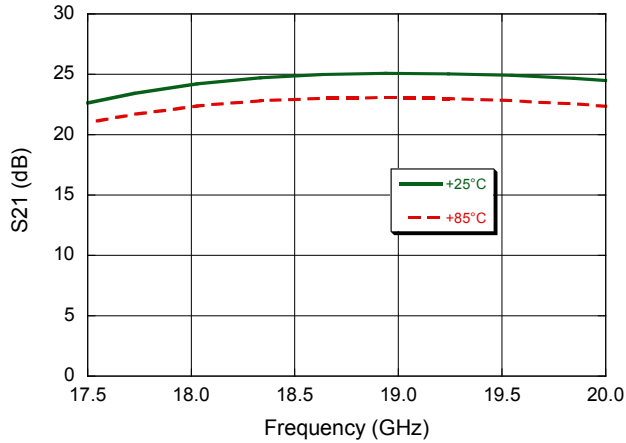
Please observe the following precautions to avoid damage:

## Static Sensitivity

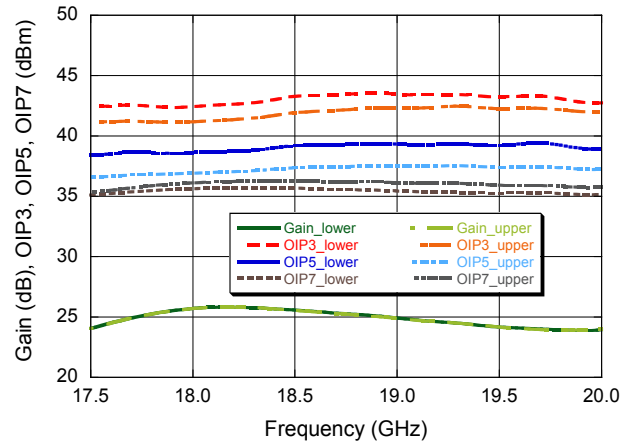
These electronic devices are sensitive to electrostatic discharge (ESD) and can be damaged by static electricity. Proper ESD control techniques should be used when handling these CDM class 2, HBM class 1B devices.

**Typical Performance Curves: 8 W Quiescent Bias,  $V_D = 6 V$**

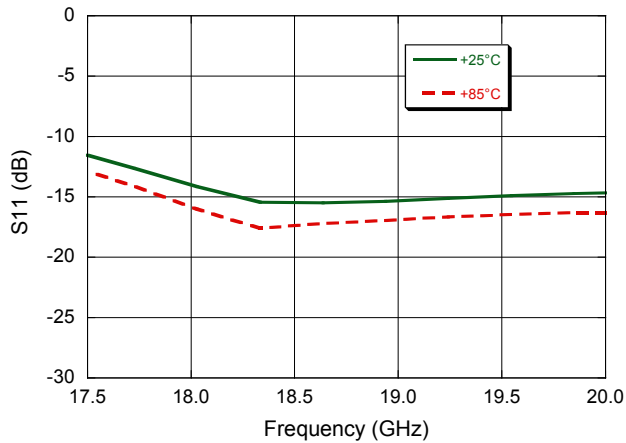
**Gain**



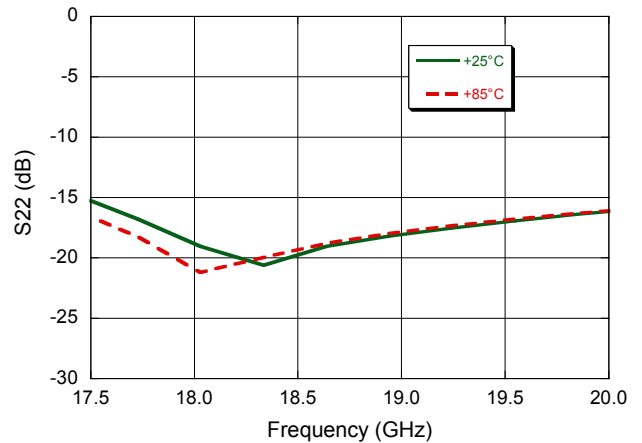
**Gain, OIP3, OIP5, OIP7 @  $P_{IN} = -2 \text{ dBm}$  per tone**



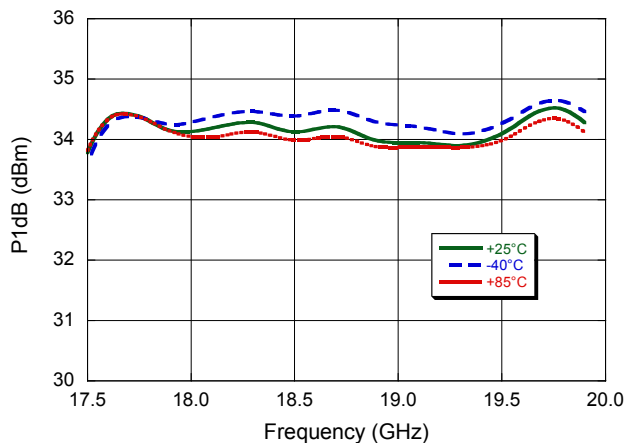
**Input Return Loss**



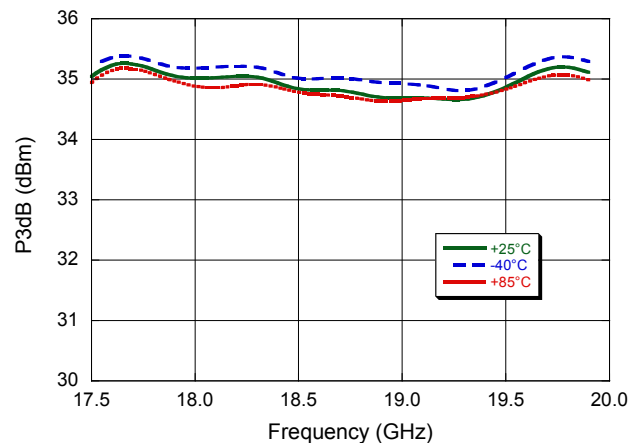
**Output Return Loss**



**P1dB**

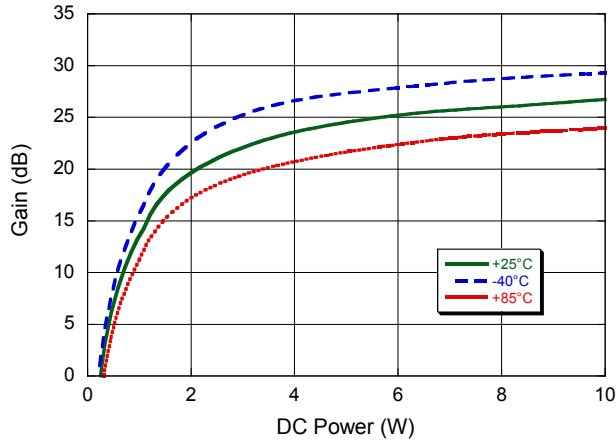


**P3dB**

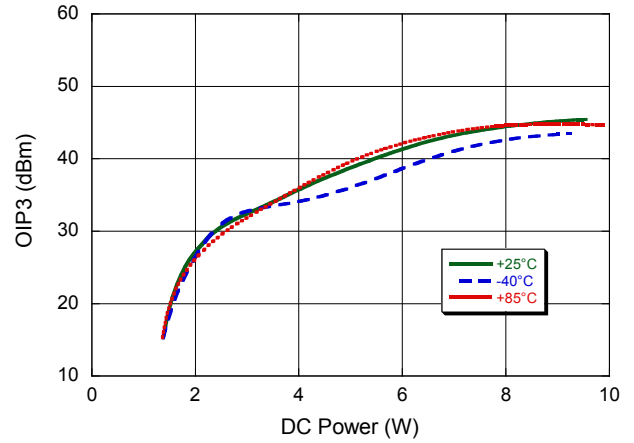


## Typical Performance Curves: $V_D = 6\text{ V}$

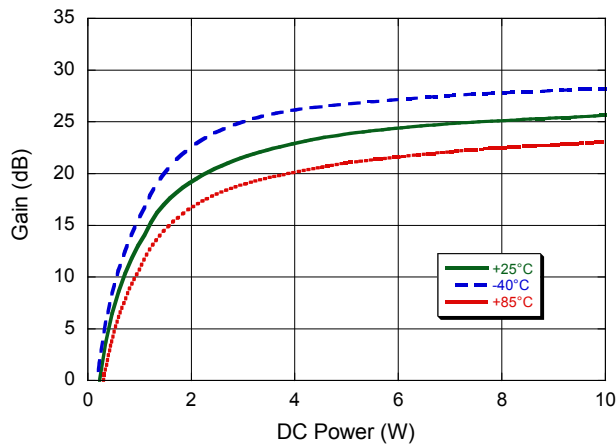
**Gain @ 17.7 GHz**



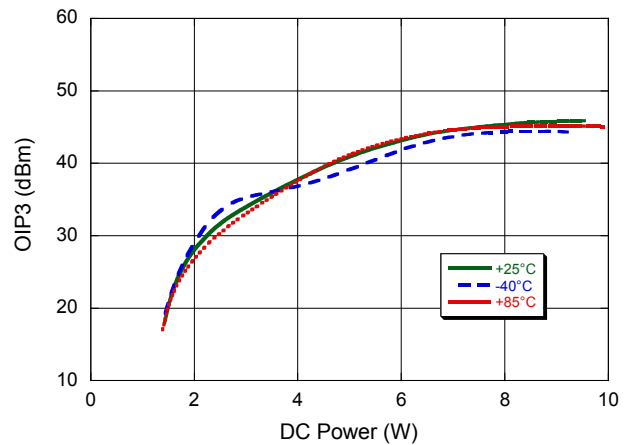
**OIP3 @ 17.7 GHz**



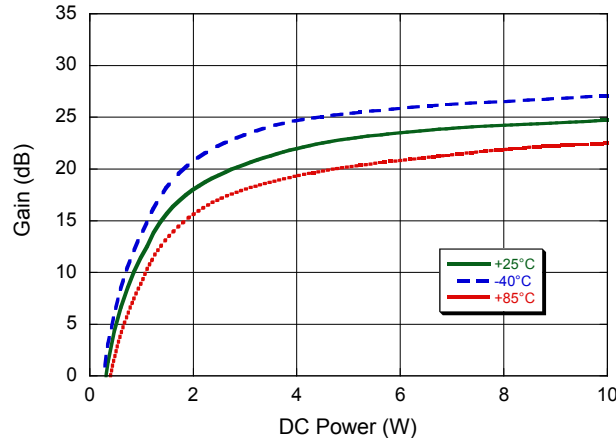
**Gain @ 18.7 GHz**



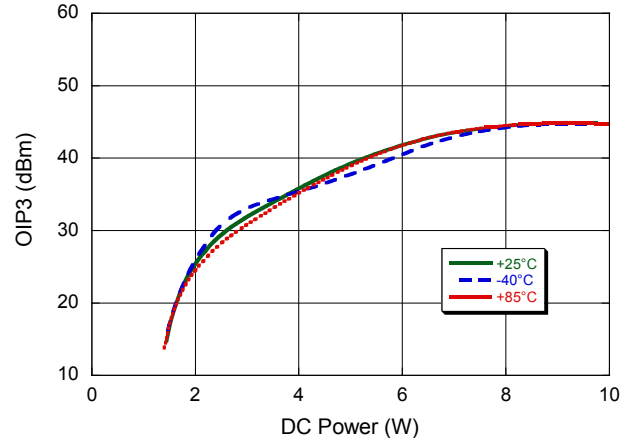
**OIP3 @ 18.7 GHz**



**Gain @ 19.7 GHz**

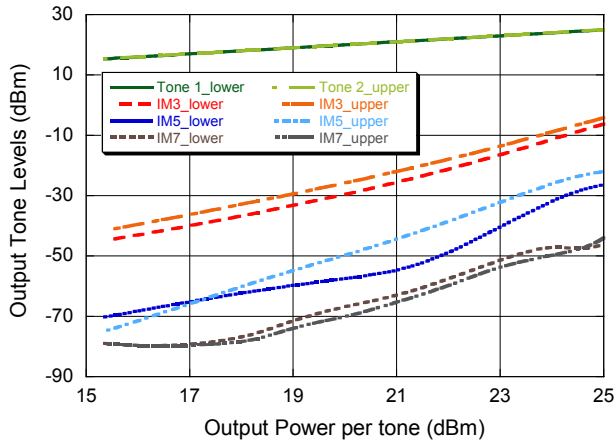


**OIP3 @ 19.7 GHz**

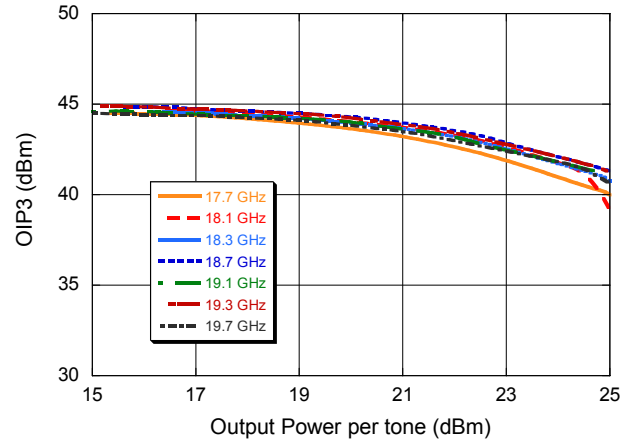


**Typical Performance Curves: 8 W Quiescent Bias,  $V_D = 6 V$**

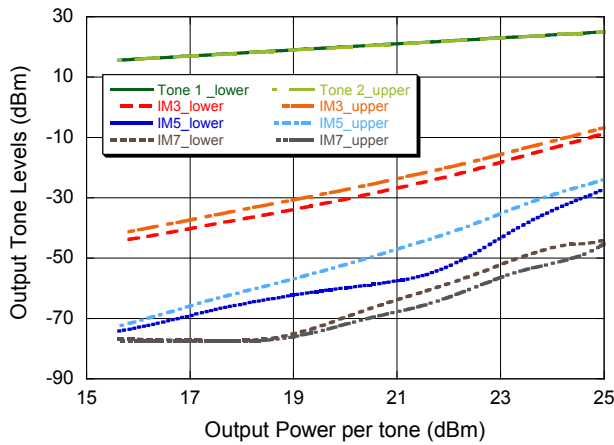
**Lower and Upper Intermodulation Tones @ 17.7 GHz**



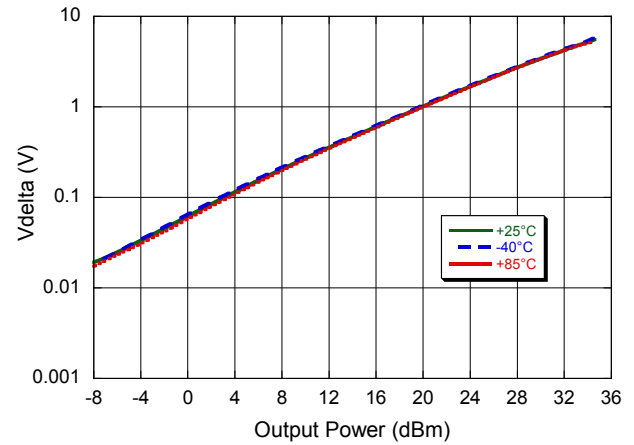
**OIP3 vs. Output Power**



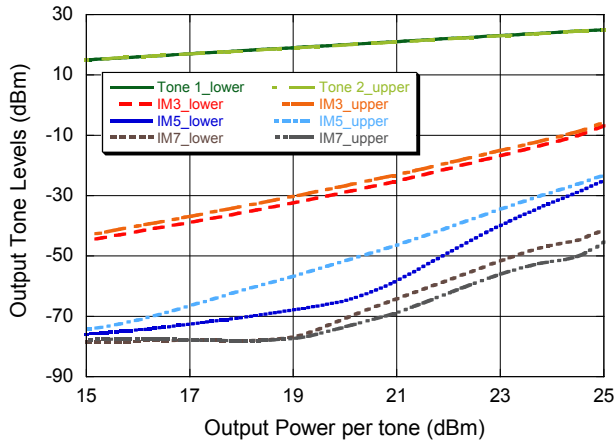
**Lower and Upper Intermodulation Tones @ 18.7 GHz**



**Detector Delta Voltage vs. Output Power**



**Lower and Upper Intermodulation Tones @ 19.7 GHz**



### Biasing -

All gates should be pinched-off ( $V_G < -2$  V) before applying drain voltage ( $V_D = 6$  V). Then the gate voltages can be increased until the desired quiescent drain current is reached in each stage. The recommended quiescent bias is  $V_D = 6$  V,  $I_{D1} = 190$  mA,  $I_{D2} = 380$  mA and  $I_{D3} = 762$  mA. The performance in this datasheet has been measured with fixed gate voltage and no drain current regulation under large signal operation. It is also possible to regulate the drain current dynamically, to limit the DC power dissipation under RF drive. To turn off the device, the turn on bias sequence should be followed in reverse.

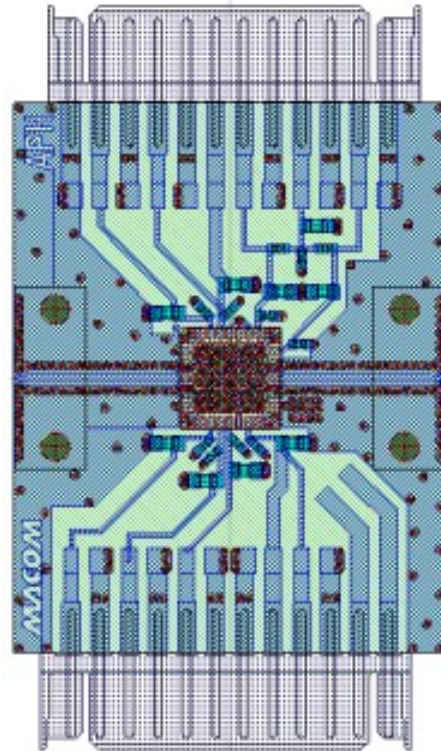
### Bias Arrangement -

Each DC pin ( $V_{D1,2,3}$  and  $V_{G1,2,3}$ ) needs to have bypass capacitance (120 pF and 10 nF) mounted as close to the MMIC as possible.

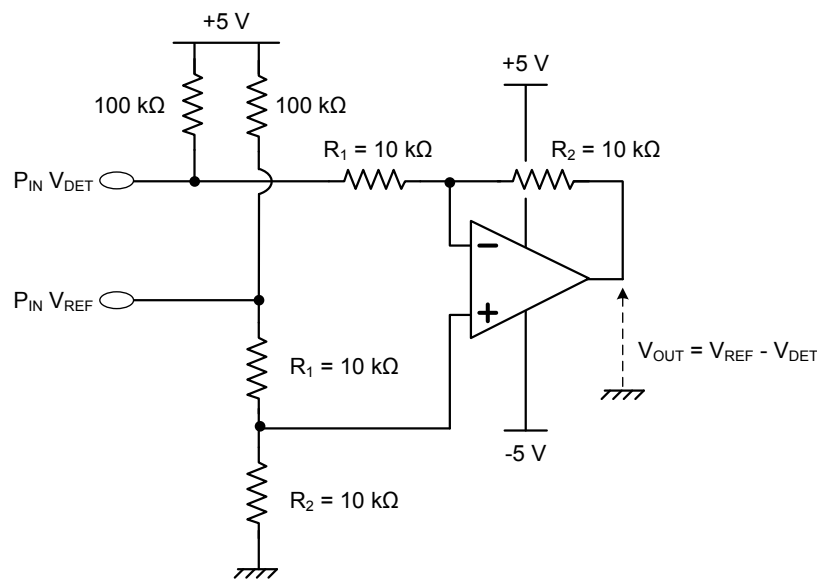
### Power Detector -

As shown in the schematic below, the power detector is implemented by providing +5 V bias and measuring the difference in output voltage with standard op-amp in a differential mode configuration.

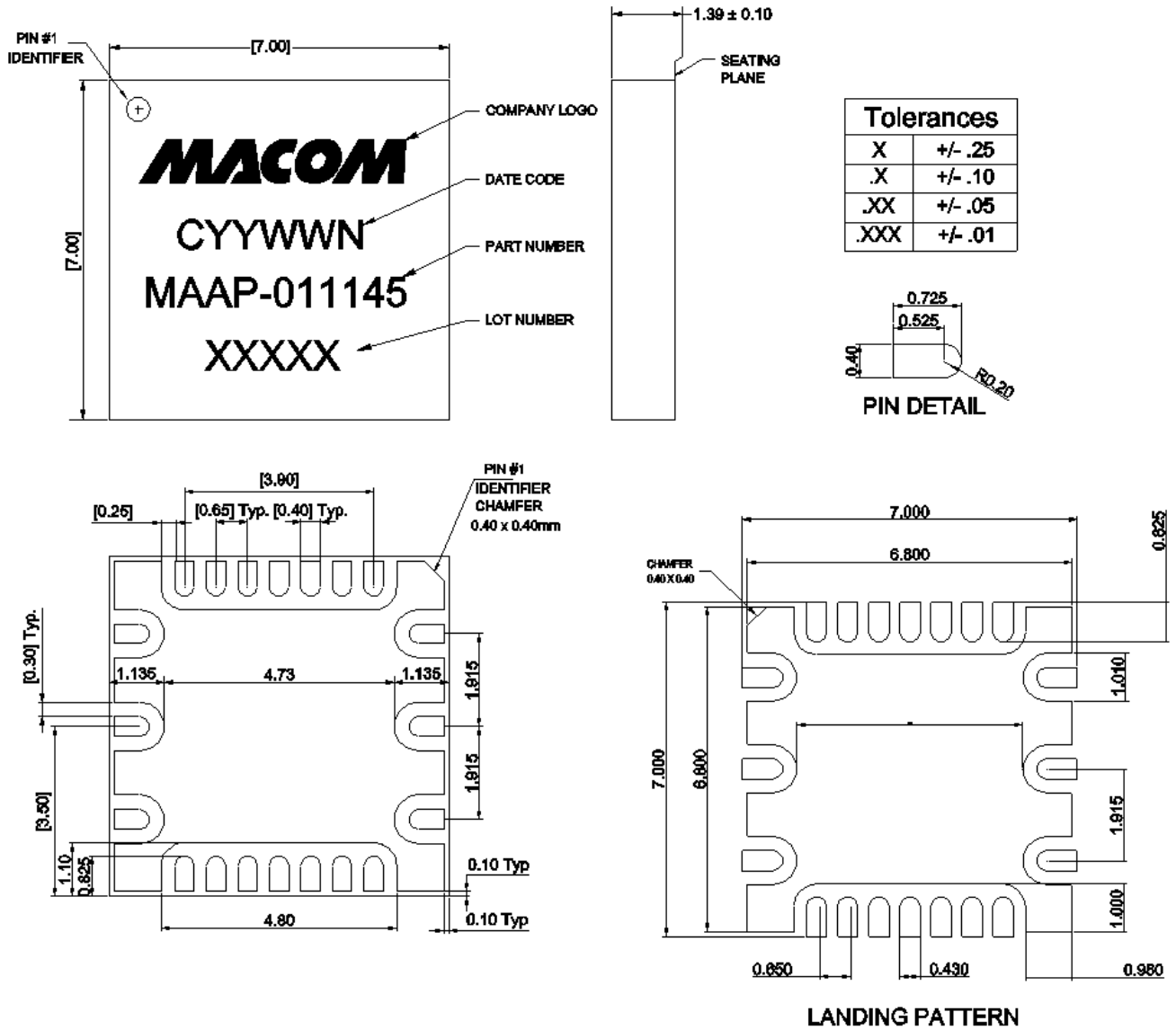
### Evaluation Board Layout



### Application Schematic



## Package Outline Drawing and Recommended Land Pattern<sup>†</sup>



All dimensions are in mm.

<sup>†</sup> Meets JEDEC moisture sensitivity level 3 requirements.



M/A-COM Technology Solutions Inc. All rights reserved.

Information in this document is provided in connection with M/A-COM Technology Solutions Inc ("MACOM") products. These materials are provided by MACOM as a service to its customers and may be used for informational purposes only. Except as provided in MACOM's Terms and Conditions of Sale for such products or in any separate agreement related to this document, MACOM assumes no liability whatsoever. MACOM assumes no responsibility for errors or omissions in these materials. MACOM may make changes to specifications and product descriptions at any time, without notice. MACOM makes no commitment to update the information and shall have no responsibility whatsoever for conflicts or incompatibilities arising from future changes to its specifications and product descriptions. No license, express or implied, by estoppel or otherwise, to any intellectual property rights is granted by this document.

THESE MATERIALS ARE PROVIDED "AS IS" WITHOUT WARRANTY OF ANY KIND, EITHER EXPRESS OR IMPLIED, RELATING TO SALE AND/OR USE OF MACOM PRODUCTS INCLUDING LIABILITY OR WARRANTIES RELATING TO FITNESS FOR A PARTICULAR PURPOSE, CONSEQUENTIAL OR INCIDENTAL DAMAGES, MERCHANTABILITY, OR INFRINGEMENT OF ANY PATENT, COPYRIGHT OR OTHER INTELLECTUAL PROPERTY RIGHT. MACOM FURTHER DOES NOT WARRANT THE ACCURACY OR COMPLETENESS OF THE INFORMATION, TEXT, GRAPHICS OR OTHER ITEMS CONTAINED WITHIN THESE MATERIALS. MACOM SHALL NOT BE LIABLE FOR ANY SPECIAL, INDIRECT, INCIDENTAL, OR CONSEQUENTIAL DAMAGES, INCLUDING WITHOUT LIMITATION, LOST REVENUES OR LOST PROFITS, WHICH MAY RESULT FROM THE USE OF THESE MATERIALS.

MACOM products are not intended for use in medical, lifesaving or life sustaining applications. MACOM customers using or selling MACOM products for use in such applications do so at their own risk and agree to fully indemnify MACOM for any damages resulting from such improper use or sale.