

LA70QS French Cylindrical Fuses

690 Volts ■ Very Fast-Acting ■ 10 – 100 Amperes



NEW



Littelfuse's French Cylindrical style semiconductor fuses are an extension to the LA70QS series. They offer a solid-fill design with high interrupting ratings and an optional striker for visual or remote blown fuse indication. The international 14x51mm and 22x58mm sizes are accepted worldwide

Special Purpose Fuses

SPECIFICATIONS

Voltage Rating: AC: 690 Volts
DC: 700 Volts

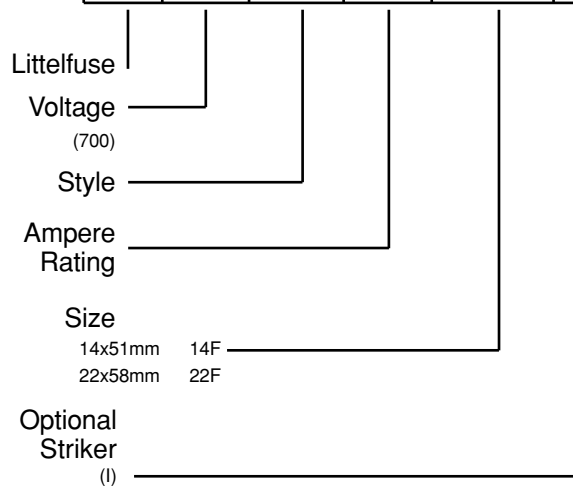
Interrupting Rating: AC: 200,000 Amperes
DC: 100,000 Amperes

Ampere Range: 10 – 100 Amperes

Approvals: UL Recognized under the components program.
CSA Certified.

ORDERING INFORMATION

LA 70 QS 20 -14F I

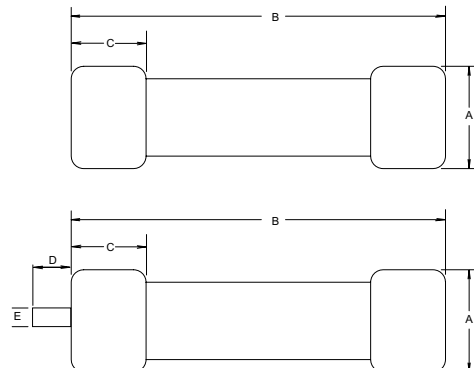


Catalog Numbers & Technical Data

Ampere Rating	Littelfuse Catalog Number (No Striker)	Littelfuse Catalog Number (With Striker)	Body Size	Maximum Clearing I ² t @700 VAC (A ² S x 10 ³)	Watts Loss @ Rated Current (W)
10	LA70QS10-14F	LA70QS10-14FI	14x51	0.04	3.5
12	LA70QS12-14F	LA70QS12-14FI	14x51	0.06	4.4
16	LA70QS16-14F	LA70QS16-14FI	14x51	0.10	4.8
20	LA70QS20-14F	LA70QS20-14FI	14x51	0.16	5.2
25	LA70QS25-14F	LA70QS25-14FI	14x51	0.27	5.8
32	LA70QS32-14F	LA70QS32-14FI	14x51	1.50	7.0
40	LA70QS40-14F	LA70QS40-14FI	14x51	0.70	10.7
50	LA70QS50-14F	LA70QS50-14FI	14x51	1.50	11.6
10	LA70QS10-22F	LA70QS10-22FI	22x58	0.025	4.0
15	LA70QS15-22F	LA70QS15-22FI	22x58	0.049	6.2
20	LA70QS20-22F	LA70QS20-22FI	22x58	0.076	8.0
25	LA70QS25-22F	LA70QS25-22FI	22x58	0.125	10.0
32	LA70QS32-22F	LA70QS32-22FI	22x58	0.27	11.0
40	LA70QS40-22F	LA70QS40-22FI	22x58	0.48	13.0
50	LA70QS50-22F	LA70QS50-22FI	22x58	0.80	14.9
63	LA70QS63-22F	LA70QS63-22FI	22x58	1.85	16.0
70	LA70QS70-22F	LA70QS70-22FI	22x58	2.80	16.5
80	LA70QS80-22F	LA70QS80-22FI	22x58	3.80	17.8
90	LA70QS90-22F	LA70QS90-22FI	22x58	5.64	17.0
100	LA70QS100-22F	LA70QS100-22FI	22x58	8.00	19.0

FUSE SIZE	Dimensions in mm				
	A	B	C	D	E
14x51 (no striker)	14	51	14	-	-
22x58 (no striker)	22	58	16	-	-
14x51 (with striker)	14	51	14	7.5	3.8
22x58 (with striker)	22	58	16	7.5	3.8

Dimensions for reference only.



Contact Littelfuse for characteristic curves.