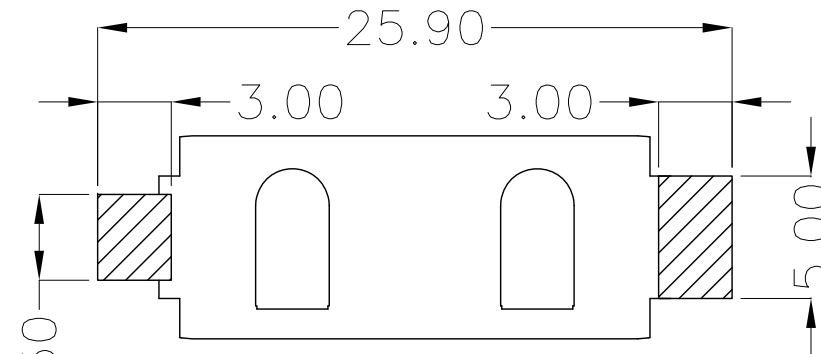
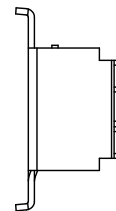
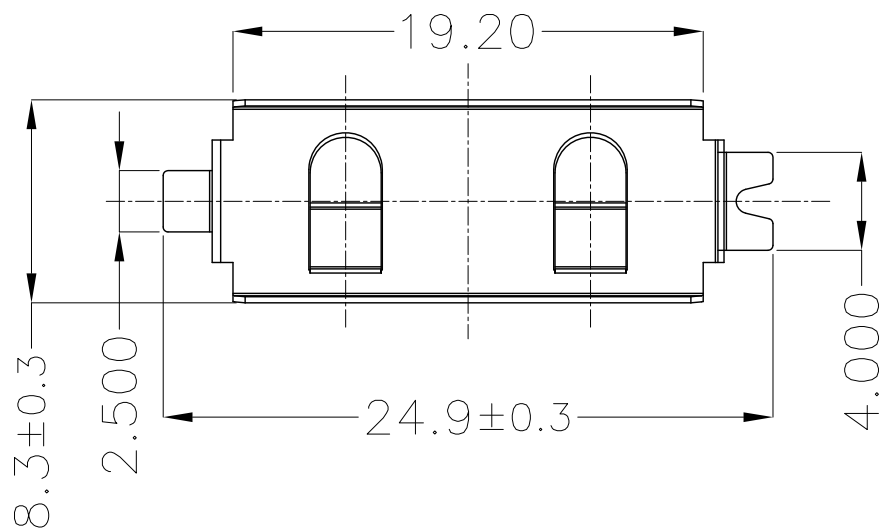
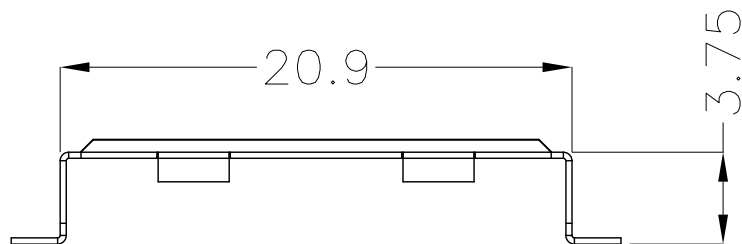




REV.	ECN NO.	REVISED	DATE



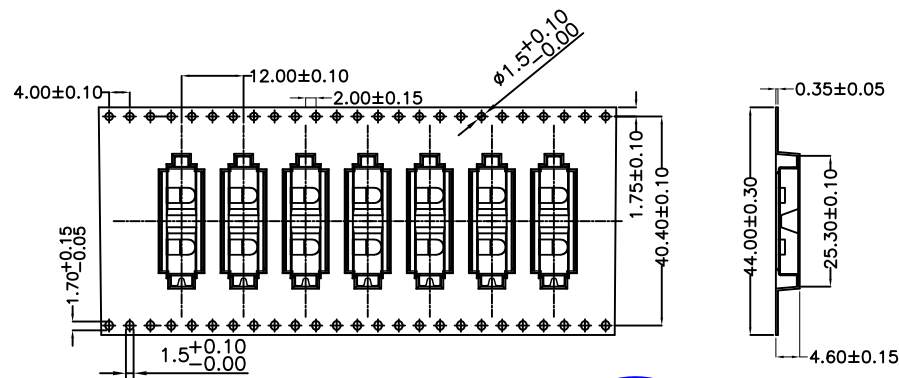
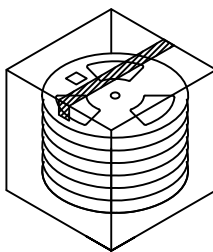
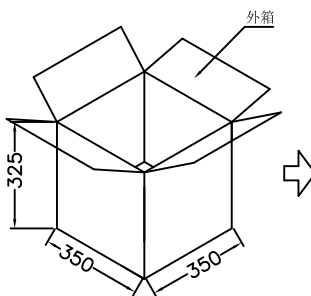
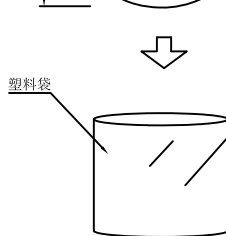
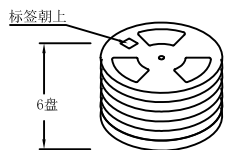
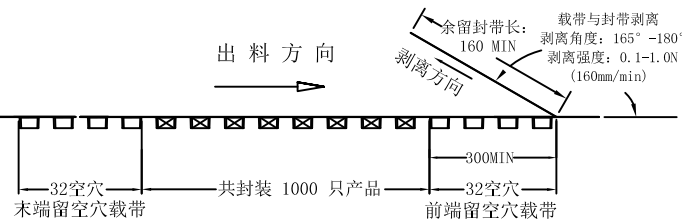
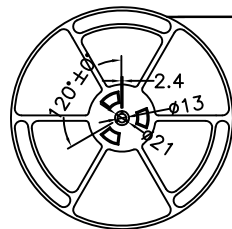
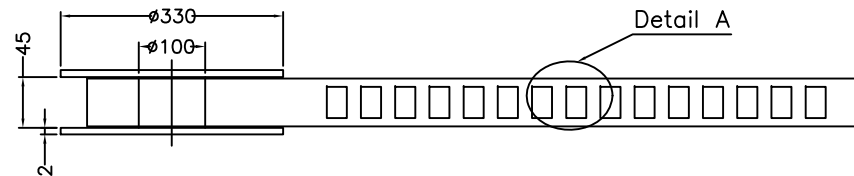
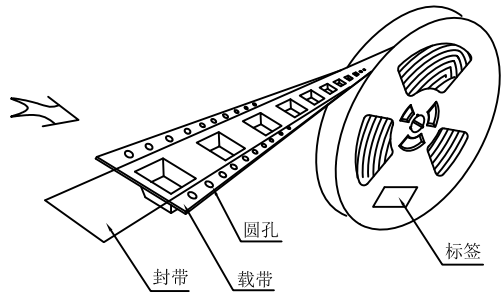
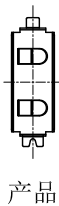
PCB Layout Diagram
Top View



工程部
2018-10-25
LQ. HUANG

UNLESS OTHERWISE SPECIFIED TOLERANCES		MYOUNG 美阳 www.meiyangdz.com	
DECIMALS: X :±0.30 X.X :±0.25 X.XX :±0.20 X.XXX :±0.10	ANGLES: X :±1° X.X :±0.5°	DSND YangFeng	DATE 2017-11-22
WEIGHT: 0.47g		CHKD ZhouRuicai	DATE 2017-11-22
SHEET 1 OF 1		APVD XueShunyong	DATE 2017-11-22
SCALE: 3.5:1		SIZE: A4	VIEW:
UNIT: mm		REV.: A/0	OBJECT: MY
TITLE:		电池扣CR2032-H SMT	
PART NO.:		MY-2032-10	
DRAW NO.:		MY-CP-0153	

1	TERMINAL(+)	1	PHOSPHOR BRONZE, T=0.25mm	Ni-Plating
NO.	PART NAME	Q'TY	MATERIAL	PLATING & COLOR

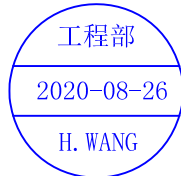


技术要求:

1. 圆孔十个孔距离累计允许公差为 $\pm 0.2\text{mm}$
2. 带长250mm内容许弯曲度1mm
3. 材料厚度以在载带边缘测量为准
4. 所有尺寸定义依循EIA-481-C系准则定义之
5. 材料: 黑色PS T=0.35mm
6. 所有卷轮为灰蓝挖空旋转塑胶卷轮
7. 整模成型长度:12.77M,
8. 非指明公差范围为: $\pm 0.1\text{mm}$; 超过250mm不计算累计误差
9. 型腔外形凡未标明处倒角R为0.2-0.3; 拔模斜度未标注的为 3° 以下

包装信息:

- 1、每卷盘装产品 1000 只, 卷盘外侧贴相关标签;
- 2、每 6 卷盘放在一个塑料袋中;
- 3、每外箱装6盘, 产品总数: 6000 只;
- 4、外箱上下用胶纸封成“工”字;
- 5、净重: 0.0 KG, 毛重: 0.0 KG.



UNLESS OTHERWISE SPECIFIED TOLERANCES		MYOUNG 美阳 www.meiyangdz.com	
DECIMALS: X : ±*** X.X : ±*** X.XX : ±*** X.XXX : ±***	ANGLES: X : ±*** X.X : ±***	DSND YangFeng	DATE 2020-08-26
WEIGHT:		CHKD ZhouRuicai	DATE 2020-08-26
SHEET 1 OF 1		APVD XueShun Yong	DATE 2020-08-26
		SCALE:	VIEW:
		UNIT: mm	REV.: A/0
		SIZE: A4	OBJECT: MY
		TITLE: 电池扣CR2032-H SMT 卷装	
		PART NO.: MY-2032-10-R	
		DRAW NO.: MY-BD-0027	