

ATLANTIC VERSION TERMINATOR INTERFACE ADAPTER	PART NUMBER	REVISION	DESCRIPTION	FEED TYPE	APPLICATOR STYLE CONVERSION CHART						
					CONVERT TO	PART NUMBERS REQUIRED					
	2266077-2	A	FINE CRIMP HEIGHT ADJUST	PNEUMATIC	SERVO LATCH PLATE	2119951-1	-	8-2266077-5	1901094-3	-	2168400-6 (QUANTITY 2)
	2266077-5	A	FINE CRIMP HEIGHT ADJUST	SERVO LATCH PLATE	SMART APPLICATOR	2161326-1	-	8-2266077-4	-	-	-
	2266077-6	A	NON-CRIMP HEIGHT ADJUST	SERVO LATCH PLATE	PNEUMATIC FEED	2119950-1	1338685-1	5-18022-5	2119641-1	2119799-1	2063440-1
	2266077-7	A	FINE CRIMP HEIGHT ADJUST	NONE	-	-	-	-	-	-	-
	7-2266077-7	A	CRIMP TOOLING KIT	-	-	-	-	-	-	-	-

APPLICATOR DATA		
CRIMP	SIZE	TYPE
WIRE	4.47 mm [.176]	F
INSUL	5.54 mm [.218]	F

APPLICATOR INSTRUCTIONS  
408-10389

TERMINAL DATA:	TE TERMINAL	TE CRIMP SPECIFICATION
TERMINAL NAME:	ULTRA FAST PLUS FULLY INSULATED FASTON	
WIRE STRIP LENGTH	6.73-7.54 mm [.265-.297 IN]	INSULATION DIAMETER RANGE 1.52-3.43 mm [.060-.135 IN]
TERMINAL APPLICATION SPECIFICATION	114-2123	
TERMINALS APPLIED		
TE TERMINAL	TE TERMINAL	TE TERMINAL
2-520405-2	2-521360-2	2-521055-2
2-520403-2	2-520401-2	2-521361-2

WIRE SIZE	CRIMP HEIGHT mm [INCH]	CRIMP HEIGHT REFERENCE SETTING	Ø SOLDER
18 AWG	1.78+/-0.05 [.070+/- .002]	6.1	.12 IN [3.05mm]
20 OR 22	1.65+/-0.05 [.065+/- .002]	7.5	.12 IN [3.05mm]

- 1 RECOMMENDED SPARE PARTS
- 2 GREASE BEARING SURFACES LIGHTLY
- 3 LUBRICATE DAILY PER THE APPLICATOR INSTRUCTION SHEET SUPPLIED WITH THE APPLICATOR.
- 4 APPLICATOR SPECIFIC DATA TO BE ENTERED INTO BLANK MEMORY CHIP AT ASSEMBLY. SEE BELOW FOR PART NUMBER:  
 PNEUMATIC FEED WITH "SMART APPLICATOR" CONVERSION: 8-2266077-4  
 SERVO FEED WITH "FINE CRIMP HEIGHT ADJUST": 8-2266077-5  
 SERVO FEED WITH "NON-CRIMP HEIGHT ADJUST": 8-2266077-6
- 5 ADJUSTMENT OF THE STRIPPER MAY BE REQUIRED WHEN MOVING THE APPLICATOR BETWEEN BENCH AND LEADMAKER APPLICATIONS.
- 6 APPLY PART NUMBER 1-23419-5 LOCTITE TO THREADS OF ITEMS 62 & 242. FOR -6 ONLY APPLY PART NUMBER 1-23419-5 LOCTITE TO THREADS OF ITEMS 37 & 242.
- 7 GREASE THREADS, GROOVE AND O-RING ON ITEMS 35 & 252.
- 8 MAGNET, ITEM 166 MUST BE ORIENTED CORRECTLY IN ORDER TO PROPERLY ACTUATE THE COUNTER.
- 9 CRIMP HEIGHT REFERENCE SETTING WAS THE SETTING USED WHEN THE APPLICATOR WAS QUALIFIED AT THE FACTORY. ADJUSTMENT MAY BE NECESSARY WHEN RUNNING APPLICATOR IN THE FIELD.
- 10 SPARE FEED CAM STORAGE LOCATION REFER TO INSTRUCTION SHEET FOR ADDITIONAL INFORMATION.
- 11 TO CONVERT THE APPLICATOR TO A NON-CARRIER CUTTING STYLE, REMOVE ITEM 13 AND ATTACH TO THE LOCATION ON THE BACK SIDE OF THE HOUSING. REFER TO INSTRUCTION SHEET FOR ADDITIONAL INFORMATION.
- 12 WHEN ASSEMBLING A NON CRIMP HEIGHT ADJUST APPLICATOR (-6) USE SHIMS FROM ITEM 260 TO ACHIEVE A NOMINAL SHIM HEIGHT OF 4.02.
- 13 TO CHECK CRIMP HEIGHT, CRIMP SOLDER (Ø.12 IN [3.05mm]) 60/40 SOLID CORE AND MEASURE AT CENTER OF SLUG.
- 14 TERMINAL PITCH NOT COMPATIBLE WITH MECHANICAL FEED.

**\*WARNING**  
 ON INSTALLATION, SET WIRE DISC, ITEM 40 TO LARGEST WIRE SIZE SETTING. USE OF SETTINGS BELOW MINIMUM REQUIRED CRIMP HEIGHT SETTING WILL CAUSE DAMAGE TO CRIMP TOOLING.

-77	-7	-6	-5	-2	PART NO	DESCRIPTION	ITEM NO
-	-	1	-	-	2119957-2	TEC Standard Metric Part Template	
-	-	1	-	1	8-21084-0	APPLICATOR SHIM PACK	260
-	-	-	-	1	2119640-1	O-RING, .676 ID, .070 DIA. MAT.	252
-	-	-	-	1	2079988-1	PUSH ROD, AIR FEED	250
-	-	-	-	1	2119641-1	BUSHING, LCH5-12, MISUMI	249
-	-	-	-	1	2119641-1	FEED CAM, AIR FEED	248
-	-	-	-	1	2119798-1	DETENT PIN	247
-	-	-	-	1	1-22279-3	SPRING, COMPRESSION	246
-	-	-	-	1	2119758-1	RAM, AMP STYLE, SIDE FEED, NON-ADJ.	245
-	-	-	-	1	2119082-9	CAM, SNAIL, INSULATION ADJUSTMENT	244

**ATLANTIC VERSION**  
 Shown on sheets 1 of 4 & 2 of 4  
 (Pacific version shown on sheets 3 of 4 & 4 of 4)

SET UP GAUGE	LOC	DIST	REVISIONS					
2119599-1	A	66	P	LTN	DESCRIPTION	DATE	OWN	APVD
			A	RELEASED		31DEC2013	BH	GB

-	1	1	1	1	2079764-1	WASHER, WAVE SPRING, CREST-TO-CREST	243
-	1	1	1	1	2119083-1	RETAINER, INSULATION DIAL	242
-	1	1	1	1	7-18023-7	SCR, SKT HD CAP M3 X 4.0	241
-	-	2	2	-	2168400-6	SHCS, LOW HEAD, RoHS, M5 X 16	240
-	-	-	-	1	2063440-1	AIR FEED MODULE	238
-	1	1	1	1	356885-4	STOP, SHEAR	237
-	-	1	1	-	2119740-2	TAG, IDENTIFICATION	213
-	-	1	1	-	1901094-3	SPACER, FEEDER	198
-	-	-	-	2	21045-3	RING, RETAIN, EXTERN, 3/16 CRESCENT	172
-	1	1	1	1	994969-1	MAGNET, RARE EARTH HIGH ENERGY	166
-	REF	REF	REF	REF	994970-2	COUNTER, MAGNETIC	164
-	-	-	-	1	240638-1	SPRING, FEED FINGER	163
-	-	-	-	1	3-23627-7	PIN, RETAIN, GRVD, 3/16 X .854	137
-	-	-	-	1	2119799-1	HOLDER, FEED FINGER, AF	136
-	-	REF	REF	-	SEE NOTE 4	MEMORY CHIP, PROGRAMMED	135
-	-	1	1	-	1633743-1	SERVO FEED LATCH ASM	133
-	1	1	1	1	1-22281-8	SPRING, COMPRESSION	121
-	1	1	1	1	1-690438-0	FRONT STRIP GUIDE	96
-	1	1	1	1	2168083-6	SCR, SKT HD CAP, RoHS, M5 X 65	93
-	1	1	1	1	2168083-3	SCR, SKT HD CAP, RoHS, M4 X 12.0	84
-	6	6	6	6	2168083-1	SCR, SKT HD CAP, RoHS, M3 X 8.0	83
-	1	1	1	1	455888-5	SPACER, CRIMPER	82
-	1	1	1	1	240641-9	SPACER	81
-	1	1	1	1	2119956-1	DOCUMENTATION PACKAGE	71
-	2	2	2	2	1-18028-4	WASHER, FLAT, REG M3	68
-	1	-	-	1	2119740-1	TAG, IDENTIFICATION	67
-	2	2	2	2	2168078-1	SCREW, DRIVE, RH, RoHS, 2 x .188	66
-	1	-	1	1	2119793-1	LIMITER, ADJUSTMENT BOLT	63
-	3	-	3	3	992763-5	SCR, SET, SOC, CONE POINT, M3 X 4.0	62
-	2	2	2	2	2-18032-5	SCR, SET, FLT POINT M5 X 20.0	61
-	1	1	1	1	2079383-4	SCR, BHSC, RoHS (M4 X 8)	60
-	-	-	-	1	5-18022-5	SCR, HEX HD CAP, M4 X 6.0	59
-	-	-	-	1	462427-2	FINGER, FEED	56
-	2	2	2	2	2168400-1	SHCS, LOW HEAD, RoHS, M4 X 12	54
-	2	2	2	2	2168083-9	SCR, SKT HD CAP, RoHS, M4 X 20	53
-	-	-	-	1	18023-9	SCR, SKT HD CAP M4 X 6.0	49
-	-	-	-	-	2119652-1	FEED CAM, PRE FEED	48
-	-	-	-	-	2119653-1	FEED CAM, POST FEED	47
-	1	1	1	1	1-2119656-9	APPLICATOR BASIC ASSEMBLY, SF	46
-	1	-	1	1	2119370-1	RAM, AMP STYLE, SIDE FEED	44
-	1	1	1	1	2079383-7	SCR, BHSC, RoHS (M8 X 25)	41
-	1	-	1	1	2119645-1	DISC, NUMBERED FA WIRE ADJUSTMENT	40
-	1	-	1	1	2119957-1	APPLICATOR SHIM PACK	39
-	1	1	1	1	2119644-2	RAM WASHER, PRECISION	38
-	1	1	1	1	2119085-1	FA HEAD, ATLANTIC STYLE	37
-	1	-	1	1	2119092-1	BOLT, ADJUSTMENT	35
-	1	1	1	1	2161328-1	HEX HEAD, FLANGED, M5 x 8mm LONG	32
-	1	1	1	1	2161336-1	PLATE, REAR STRIP GUIDE	29
-	2	2	2	2	22281-9	SPRING, COMPRESSION	27
-	1	1	1	1	356835-1	LEVER, DRAG RELEASE	26
-	1	1	1	1	240792-1	DRAG, TERMINAL	25
-	1	1	1	1	684042-4	GUIDE, STRIP, FRONT	24
-	1	1	1	1	980371-4	SCR, SKT HD SHLDR 5.0 DIA X 6.0	23
-	1	1	1	1	2161335-2	SHEAR PLATE, REAR	22
-	1	1	1	1	2168083-2	SCR, SKT HD CAP, RoHS, M4 X 8.0	21
-	1	1	1	1	1-18028-2	WASHER, FLAT, REG M4	20
-	1	1	1	1	2119533-1	STRIPPER, SIDE FEED	19
-	1	1	1	1	463460-3	HOLD DOWN, TERMINAL	18
-	1	1	1	1	803925-2	GUIDE, CARRIER SCRAP	17
-	2	2	2	2	1-2168083-1	SCR, SKT HD CAP, RoHS, M3 X 6	16
-	1	1	1	1	469542-3	REAR FLOATING SHEAR	15
-	1	1	1	1	2119862-2	SHEAR HOLDER, REAR	14
-	1	1	1	1	2119806-1	INSERT, SHEAR	13
-	1	1	1	1	3-22280-3	SPRING, COMPRESSION	12
-	-	-	-	-	-	-	10
-	1	1	1	1	1-454766-4	ANVIL, INSULATION	9
1	1	1	1	1	808025-3	ANVIL, SAND-BLASTED 16-14	8
-	1	1	1	1	690468-6	DEPRESSOR SHEAR, REAR	6
-	-	-	-	-	-	-	5
-	1	1	1	1	3-238009-6	BLOCK, FL CRIMPER SPACER	4
-	1	1	1	1	1803130-1	CRIMPER, INSULATION FASTON	3
-	-	-	-	-	-	-	2
-	1	1	1	1	808830-2	CRIMPER, SEMI FLAT 16-14	1

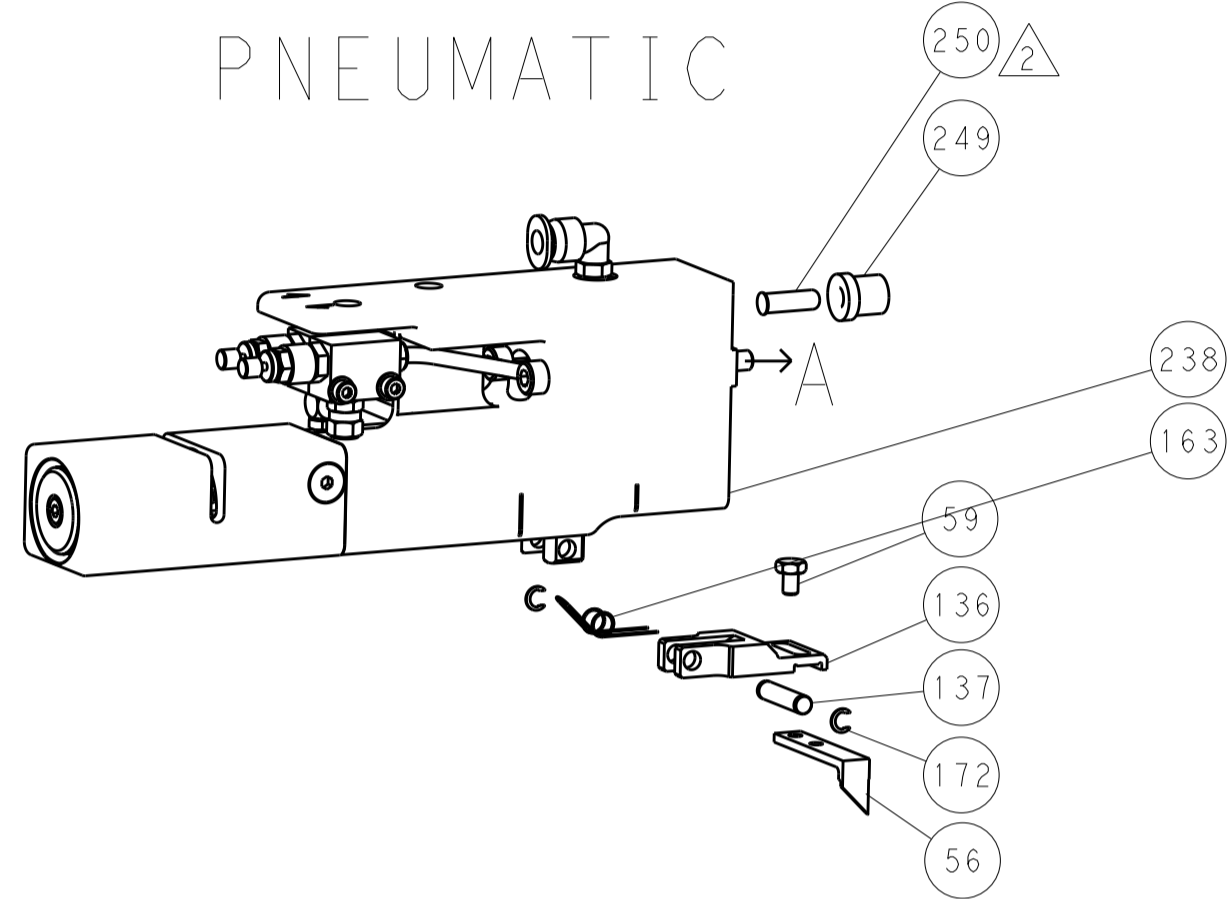
DIMENSIONS:		TOLERANCES UNLESS OTHERWISE SPECIFIED:		MATERIAL:		FINISH:		WEIGHT:		SCALE:	
mm	0 PLC ±.05	1 PLC ±.03	2 PLC ±.02	3 PLC ±.015	4 PLC ±.01	ANGLES ±.0001	FINISH				

DATE	BY	CHKD	APPVD	NAME	SIZE	CAGE CODE	DRAWING NO	RESTRICTED TO
18OCT2013	BOB HIGMAN	G. BAILEY	M. CLIFFORD	Ocean Side Feed Applicator	A1	00779	2266077	Customer Accessible Production Drawing

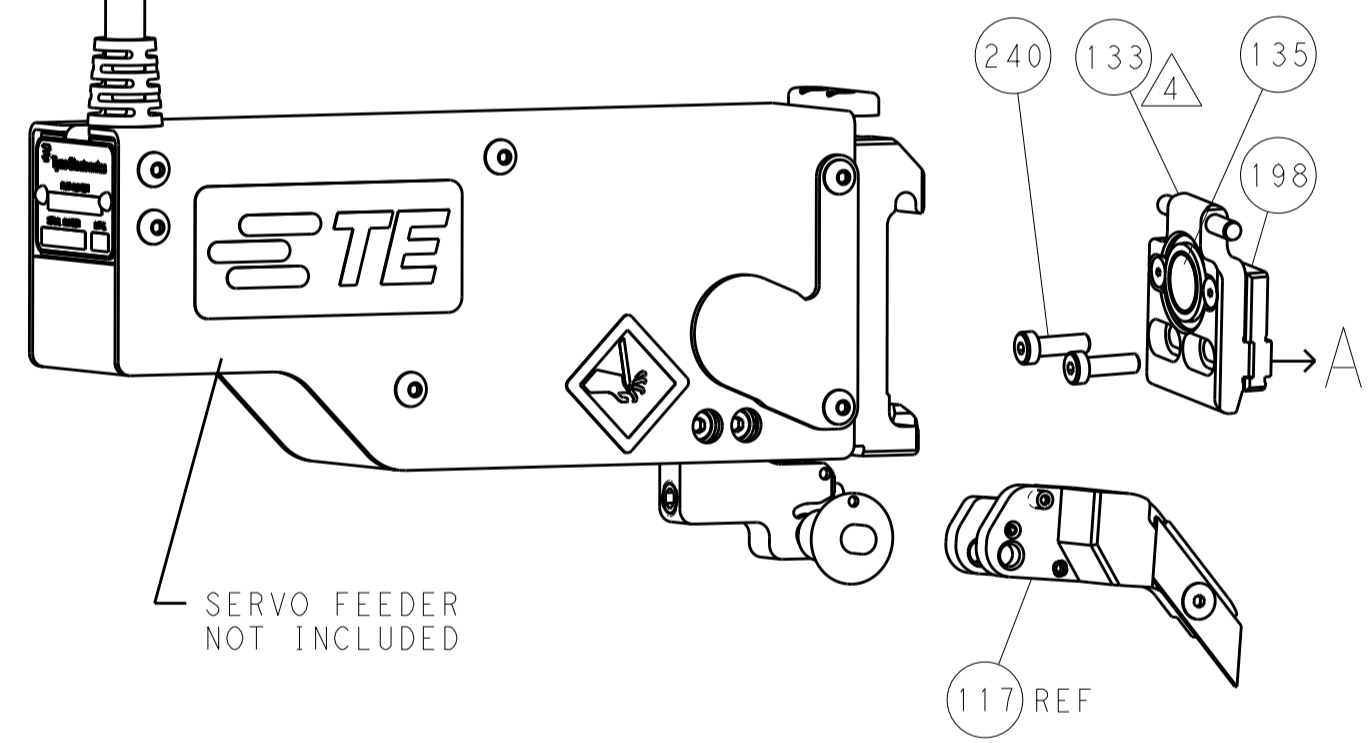
LOC		DIST		REVISIONS				
P	LTN	DATE	DMN	APVD	DESCRIPTION	DATE	DMN	APVD
A	66	-	-	-	SEE SHEET 1	-	-	-

# FEED TYPE

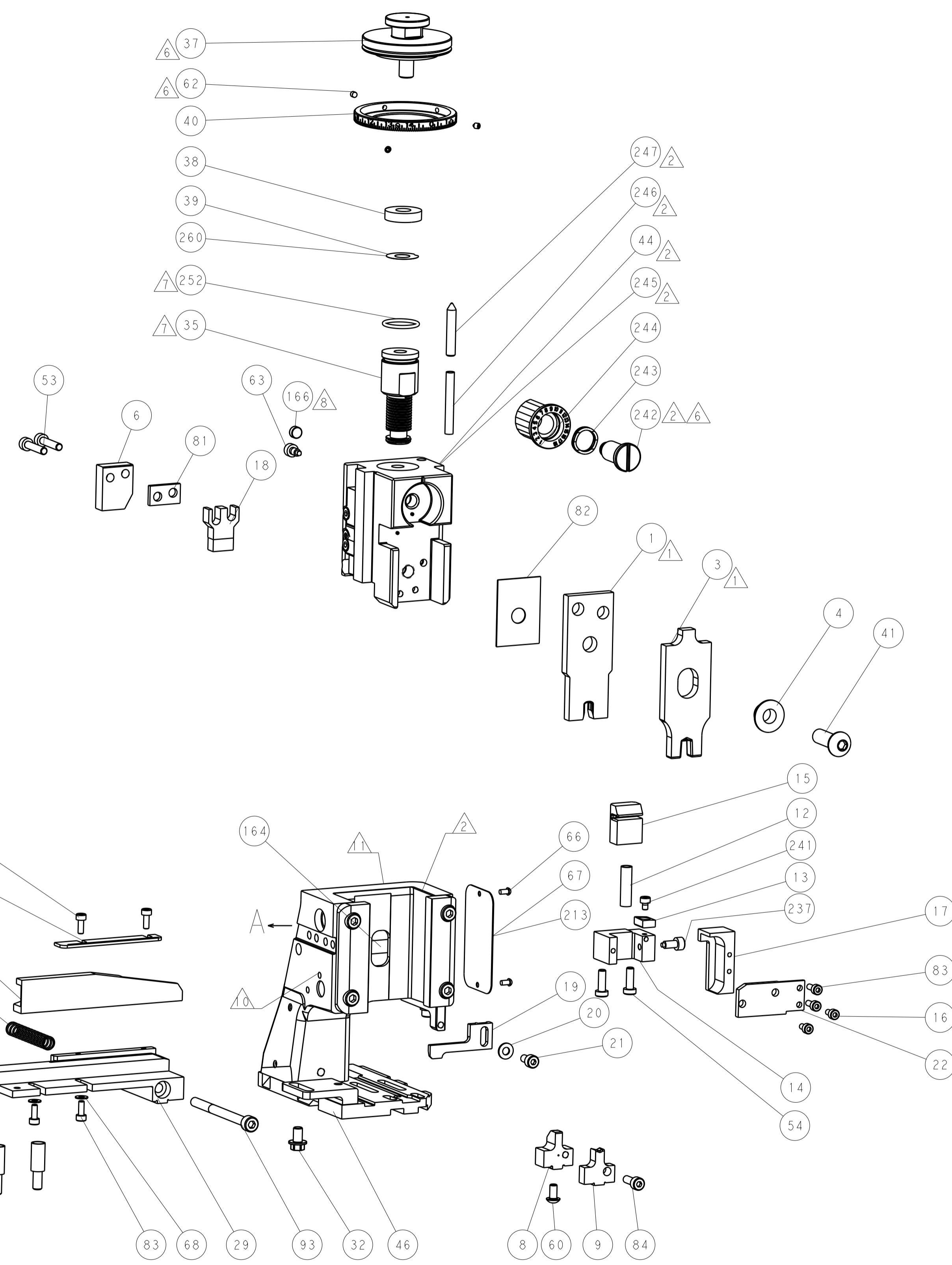
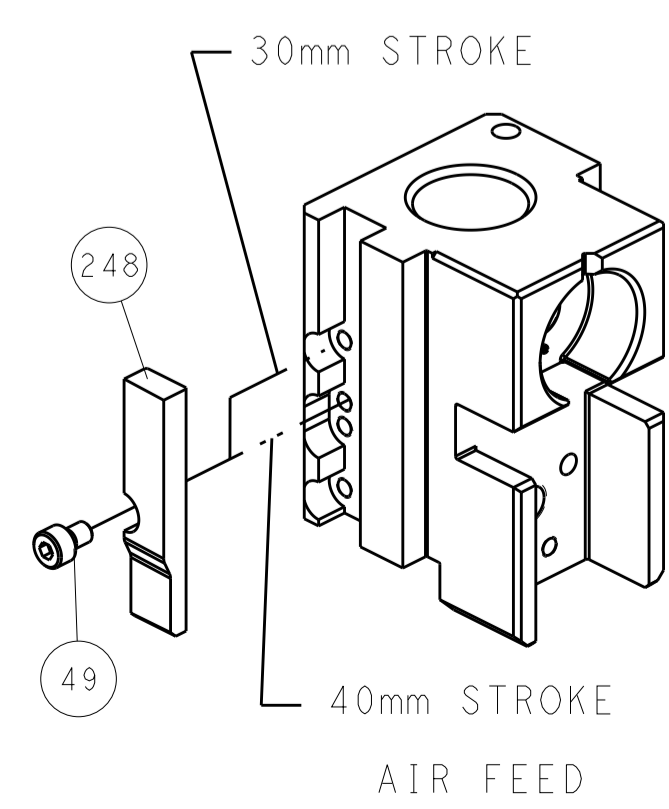
## PNEUMATIC



## SERVO LATCH PLATE



## CAM POSITION



**ATLANTIC VERSION**  
 Shown on sheets 1 of 4 & 2 of 4  
 (Pacific version shown on sheets 3 of 4 & 4 of 4)

DIMENSIONS:		TOLERANCES UNLESS OTHERWISE SPECIFIED:		DWG: BOB HIGMAN 18OCT2013		TE Connectivity	
mm	0 PLC ±0.5	1 PLC ±0.5	2 PLC ±0.13	3 PLC ±0.013	4 PLC ±0.001	APVD: G. BAILEY 18OCT2013	Harrisburg, PA 17105-3608
MATERIAL:		FINISH:		NAME: M. CLIFFORD 18OCT2013		Ocean Side Feed Applicator	
Customer Accessible Production Drawing		SCALE: 1:2		SHEET 2 of 4		REV A	

PACIFIC VERSION TERMINATOR INTERFACE ADAPTER	PART NUMBER	REVISION	DESCRIPTION	FEED TYPE	APPLICATOR STYLE CONVERSION CHART						
					CONVERT TO	PART NUMBERS REQUIRED					
	2-2266077-2	A	FINE CRIMP HEIGHT ADJUST	PNEUMATIC	SERVO LATCH PLATE	2119951-1	-	8-2266077-5	1901094-3	-	-
					SMART APPLICATOR	2161326-1	-	8-2266077-4	-	-	2168400-6 (QUANTITY 2)
	2-2266077-5	A	FINE CRIMP HEIGHT ADJUST	SERVO LATCH PLATE	PNEUMATIC FEED	2119950-1	1338685-1	5-18022-5	2119641-2	2119799-1	2063440-1
	2-2266077-7	A	FINE CRIMP HEIGHT ADJUST	NONE	-	-	-	-	-	-	-
	7-2266077-7	A	CRIMP TOOLING KIT	-	-	-	-	-	-	-	-

APPLICATOR DATA		
CRIMP	SIZE	TYPE
WIRE	4.47 mm [ .176 ]	F
INSUL	5.54 mm [ .218 ]	F
APPLICATOR INSTRUCTIONS 408-10389		

TERMINAL DATA:	TE TERMINAL	TE CRIMP SPECIFICATION
TERMINAL NAME:	ULTRA FAST PLUS FULLY INSULATED FASTON	
WIRE STRIP LENGTH		INSULATION DIAMETER RANGE
6.73-7.54 mm [ .265-.297 IN ]		1.52-3.43 mm [ .060-.135 IN ]
TERMINAL APPLICATION SPECIFICATION	114-2123	-
TERMINALS APPLIED	-	
TE TERMINAL	TE TERMINAL	TE TERMINAL
2-520405-2	2-521360-2	2-521055-2
2-520403-2	2-520401-2	2-521361-2

WIRE SIZE	CRIMP HEIGHT mm [INCH]	CRIMP HEIGHT REFERENCE SETTING	Ø SOLDER
18 AWG	1.78 +/- 0.05 [ .070 +/- .002 ]	6.1	6.4
20 OR 22	1.65 +/- 0.05 [ .065 +/- .002 ]	7.5	7.6

- RECOMMENDED SPARE PARTS
- GREASE BEARING SURFACES LIGHTLY
- 3. LUBRICATE DAILY PER THE APPLICATOR INSTRUCTION SHEET SUPPLIED WITH THE APPLICATOR.
- APPLICATOR SPECIFIC DATA TO BE ENTERED INTO BLANK MEMORY CHIP AT ASSEMBLY. SEE BELOW FOR PART NUMBER:  
 PNEUMATIC FEED WITH "SMART APPLICATOR" CONVERSION: 8-2266077-4  
 SERVO FEED WITH "FINE CRIMP HEIGHT ADJUST": 8-2266077-5
- 5. ADJUSTMENT OF THE STRIPPER MAY BE REQUIRED WHEN MOVING THE APPLICATOR BETWEEN BENCH AND LEADMAKER APPLICATIONS.
- APPLY PART NUMBER 1-23419-5 LOCTITE TO THREADS OF ITEMS 62 & 242.
- GREASE THREADS, GROOVE AND O-RING ON ITEMS 139 & 152.
- MAGNET MUST BE ORIENTED CORRECTLY IN ORDER TO PROPERLY ACTUATE THE COUNTER.
- CRIMP HEIGHT REFERENCE SETTING WAS THE SETTING USED WHEN THE APPLICATOR WAS QUALIFIED AT THE FACTORY. ADJUSTMENT MAY BE NECESSARY WHEN RUNNING APPLICATOR IN THE FIELD.
- SPARE FEED CAM STORAGE LOCATION REFER TO INSTRUCTION SHEET FOR ADDITIONAL INFORMATION.
- TO CONVERT THE APPLICATOR TO A NON-CARRIER CUTTING STYLE, REMOVE ITEM 13 AND ATTACH TO THE LOCATION ON BACK SIDE OF THE HOUSING. REFER TO INSTRUCTION SHEET FOR ADDITIONAL INFORMATION.
- TO CHECK CRIMP HEIGHT, CRIMP SOLDER (Ø .12 IN [3.05mm]) 60/40 SOLID CORE AND MEASURE AT CENTER OF SLUG.
- TERMINAL PITCH NOT COMPATIBLE WITH MECHANICAL FEED.

\*WARNING  
 ON INSTALLATION, SET WIRE DISC, ITEM 40 TO LARGEST WIRE SIZE SETTING. USE OF SETTINGS BELOW MINIMUM REQUIRED CRIMP HEIGHT SETTING WILL CAUSE DAMAGE TO CRIMP TOOLING.

					TEC Standard Metric Part Template	
-	1	1	1	2119782-1	FINE ADJUST HEAD ASM, PACIFIC STYLE	251
-	-	-	1	2119640-1	PUSH ROD, AIR FEED	250
-	-	-	1	2079988-1	BUSHING, LCH5-12, MISUMI	249
-	1	1	1	1-22279-3	SPRING, COMPRESSION	246
-	1	1	1	2119082-9	CAM, SNAIL, INSULATION ADJUSTMENT	244
-	1	1	1	2079764-1	WASHER, WAVE SPRING, CREST-TO-CREST	243
	-	1	1	2119083-1	RETAINER, INSULATION DIAL	242
	-77	-27	-25	-22	PART NO	DESCRIPTION
						ITEM NO

PACIFIC VERSION  
 Shown on sheets 3 of 4 & 4 of 4  
 (Atlantic version shown on sheets 1 of 4 & 2 of 4)

SET UP GAUGE	LOC	DIST	REVISIONS			
2119599-1	A	66	REV	DATE	BY	APPV
			-	-	-	-
			-	-	-	-

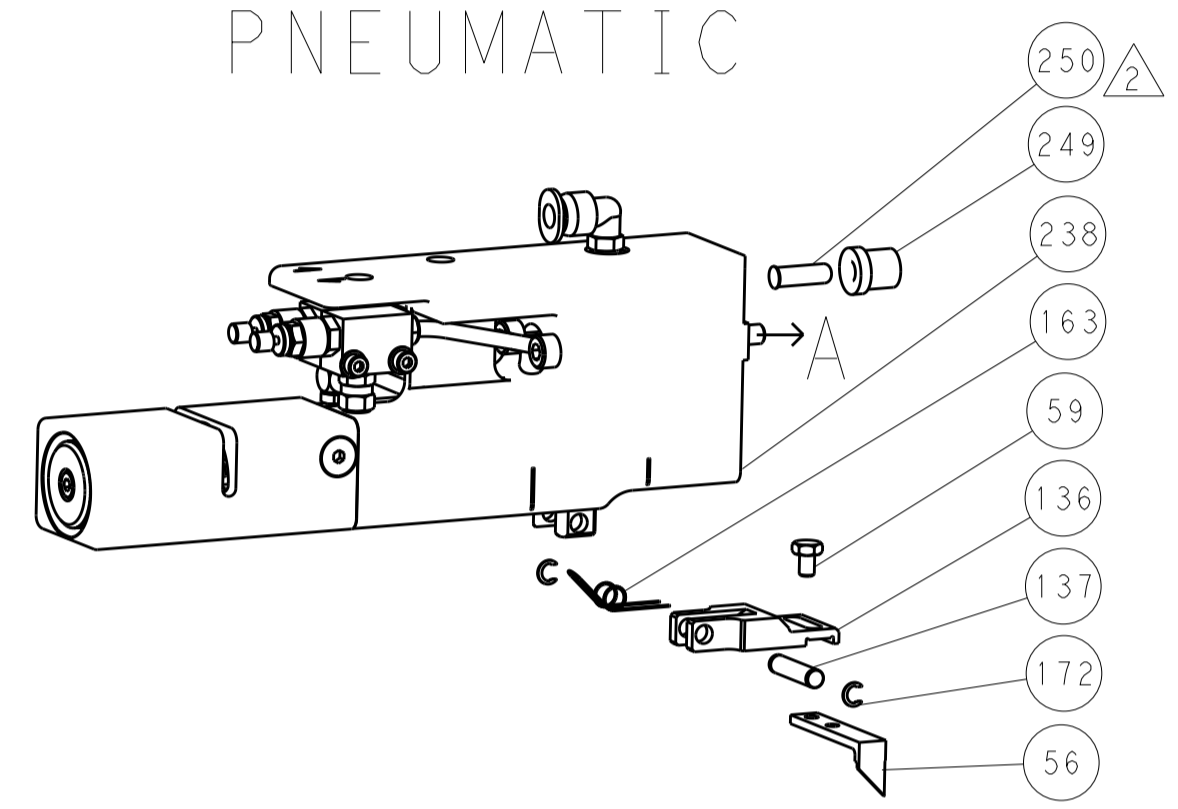
REV	DATE	BY	APPV	DESCRIPTION	DATE	BY	APPV
-	1	1	1	7-18023-7	SCR, SKT HD CAP M3 X 4.0		241
-	-	2	-	2168400-6	SHCS, LOW HEAD, RoHS, M5 X 16		240
-	-	-	1	2063440-1	AIR FEED MODULE		238
-	1	1	1	356885-4	STOP, SHEAR		237
-	-	1	-	2119740-2	TAG, IDENTIFICATION		213
-	-	1	-	1901094-3	SPACER, FEEDER		198
-	-	-	2	21045-3	RING, RETAIN, EXTERN, 3/16 CRESCENT		172
-	1	1	1	994969-1	MAGNET, RARE EARTH HIGH ENERGY		166
-	REF	REF	REF	994970-2	COUNTER, MAGNETIC		164
-	-	-	1	240638-1	SPRING, FEED FINGER		163
-	1	1	1	8-21084-1	O-RING, .801 ID, .070 DIA. MAT.		152
-	-	-	1	2119641-2	FEED CAM, AIR FEED		151
-	1	1	1	2119798-2	DETENT PIN		145
-	1	1	1	2079383-8	SCR, BHSC, RoHS (M4 X 16)		144
-	2	2	2	2168400-5	SHCS, LOW HEAD, RoHS, M4 X 20		143
-	-	-	-	2119653-2	FEED CAM, POST FEED		142
-	1	1	1	2-2119656-0	APPLICATOR BASIC ASSEMBLY, SF		141
-	1	1	1	2119650-1	RAM, ASIAN STYLE, SIDE FEED		140
-	1	1	1	2119092-2	BOLT, ADJUSTMENT		139
-	-	-	1	3-23627-7	PIN, RETAIN, GRVD, 3/16 X .854		137
-	-	-	1	2119799-1	HOLDER, FEED FINGER, AF		136
-	-	REF	-	SEE NOTE 4	MEMORY CHIP, PROGRAMMED		135
-	-	1	-	1633743-1	SERVO FEED LATCH ASM		133
-	1	1	1	1-22281-8	SPRING, COMPRESSION		121
-	1	1	1	1-690438-0	FRONT STRIP GUIDE		96
-	1	1	1	2168083-6	SCR, SKT HD CAP, RoHS, M5 X 65		93
-	1	1	1	2168083-3	SCR, SKT HD CAP, RoHS, M4 X 12.0		84
-	6	6	6	2168083-1	SCR, SKT HD CAP, RoHS, M3 X 8.0		83
-	1	1	1	455888-5	SPACER, CRIMPER		82
-	1	1	1	240641-9	SPACER		81
-	1	1	1	2119956-1	DOCUMENTATION PACKAGE		71
-	2	2	2	1-18028-4	WASHER, FLAT, REG M3		68
-	1	-	1	2119740-1	TAG, IDENTIFICATION		67
-	2	2	2	2168078-1	SCREW, DRIVE, RH, RoHS, 2 x .188		66
-	1	1	1	2119793-1	LIMITER, ADJUSTMENT BOLT		63
	3	3	3	992763-5	SCR, SET, SOC, CONE POINT, M3 X 4.0		62
-	2	2	2	2-18032-5	SCR, SET, FLT POINT M5 X 20.0		61
-	-	-	1	5-18022-5	SCR, HEX HD CAP, M4 X 6.0		59
-	-	-	1	462427-2	FINGER, FEED		56
-	2	2	2	2168083-9	SCR, SKT HD CAP, RoHS, M4 X 20		53
-	-	-	1	18023-9	SCR, SKT HD CAP M4 X 6.0		49
-	-	-	-	2119652-1	FEED CAM, PRE FEED		48
-	1	1	1	2079383-7	SCR, BHSC, RoHS (M8 X 25)		41
-	1	1	1	2119645-1	DISC, NUMBERED FA WIRE ADJUSTMENT		40
-	1	1	1	2119957-1	APPLICATOR SHIM PACK		39
-	1	1	1	2119644-2	RAM WASHER, PRECISION		38
-	1	1	1	2161328-1	HEX HEAD, FLANGED, M5 x 8mm LONG		32
-	1	1	1	2161336-1	PLATE, REAR STRIP GUIDE		29
-	2	2	2	22281-9	SPRING, COMPRESSION		27
-	1	1	1	356835-1	LEVER, DRAG RELEASE		26
-	1	1	1	240792-1	DRAG, TERMINAL		25
-	1	1	1	684042-4	GUIDE, STRIP, FRONT		24
-	1	1	1	980371-4	SCR, SKT HD SHLDR 5.0 DIA X 6.0		23
-	1	1	1	2161335-2	SHEAR PLATE, REAR		22
-	1	1	1	2168083-2	SCR, SKT HD CAP, RoHS, M4 X 8.0		21
-	1	1	1	1-18028-2	WASHER, FLAT, REG M4		20
-	1	1	1	2119533-1	STRIPPER, SIDE FEED		19
-	1	1	1	463460-3	HOLD DOWN, TERMINAL		18
-	1	1	1	803925-2	GUIDE, CARRIER SCRAP		17
	2	2	2	1-2168083-1	SCR, SKT HD CAP, RoHS, M3 X 6		16
	1	1	1	469542-3	REAR FLOATING SHEAR		15
	1	1	1	2119862-2	SHEAR HOLDER, REAR		14
	1	1	1	2119806-1	INSERT, SHEAR		13
	1	1	1	3-22280-3	SPRING, COMPRESSION		12
	-	-	-	-	-		10
	1	1	1	1-454766-4	ANVIL, INSULATION		9
	1	1	1	808025-3	ANVIL, SAND-BLASTED 16-14		8
	1	1	1	690468-6	DEPRESSOR SHEAR, REAR		6
	-	-	-	-	-		5
	1	1	1	3-238009-6	BLOCK, FL CRIMPER SPACER		4
	1	1	1	1803130-1	CRIMPER, INSULATION FASTON		3
	-	-	-	-	-		2
	1	1	1	808830-2	CRIMPER, SEMI FLAT 16-14		1
-77	-27	-25	-22	PART NO	DESCRIPTION	ITEM NO	

DIMENSIONS: mm		TOLERANCES UNLESS OTHERWISE SPECIFIED:		DWG: BOB HIGMAN 18OCT2013		CHK: G. BAILEY 18OCT2013		APV: M. CLIFFORD 18OCT2013		NAME: Ocean Side Feed Applicator	
0 PLC ±.5		1 PLC ±.5		2 PLC ±.5		3 PLC ±.5		4 PLC ±.5		SIZE: A	
ANGLES ±.0001		FINISH		WEIGHT		SCALE: 1:2		SHEET: 3 of 4		REV: A	
MATERIAL		FINISH		WEIGHT		SCALE: 1:2		SHEET: 3 of 4		REV: A	

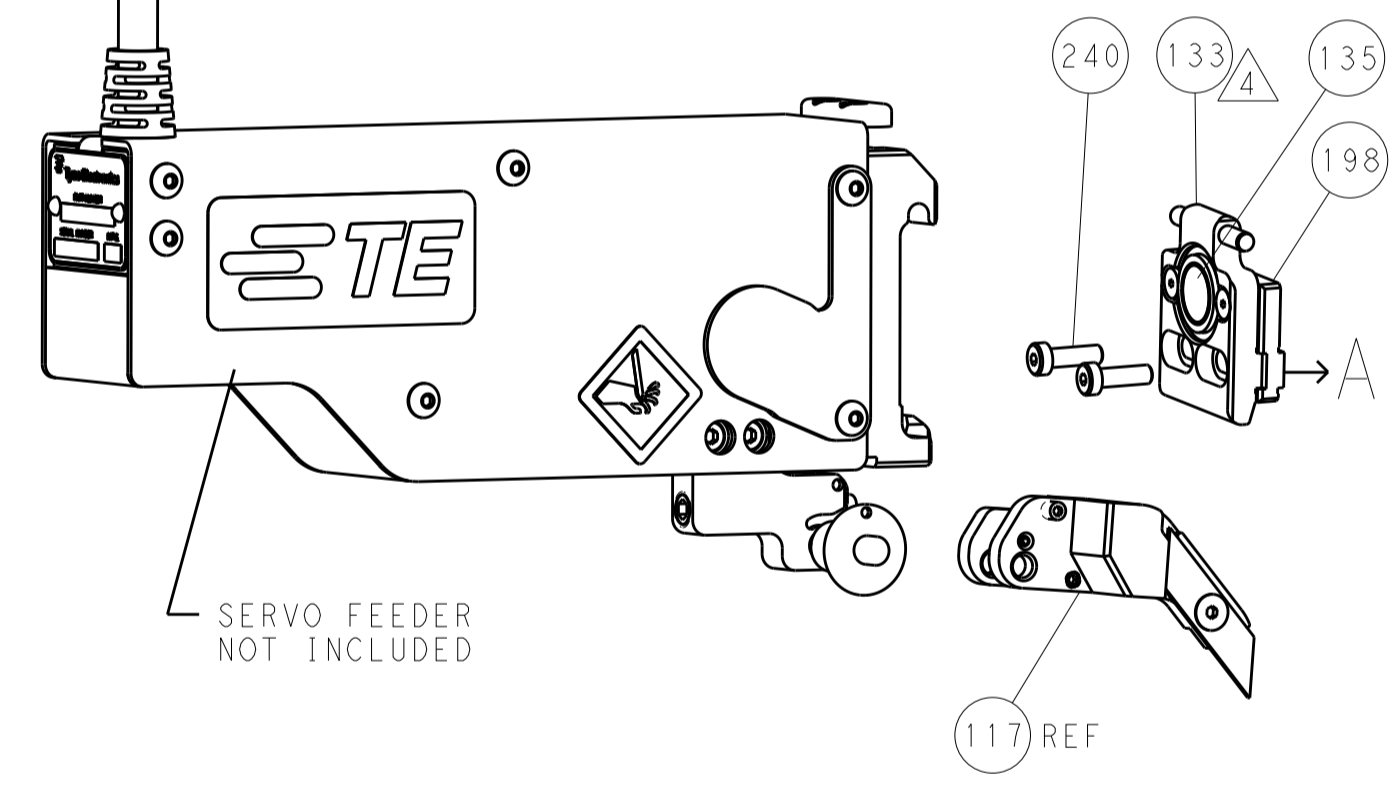
LOC		DIST		REVISONS			
P	LTN	DESCRIPTION	DATE	DWN	APVD		
-	-	SEE SHEET 1	-	-	-		

### FEED TYPE

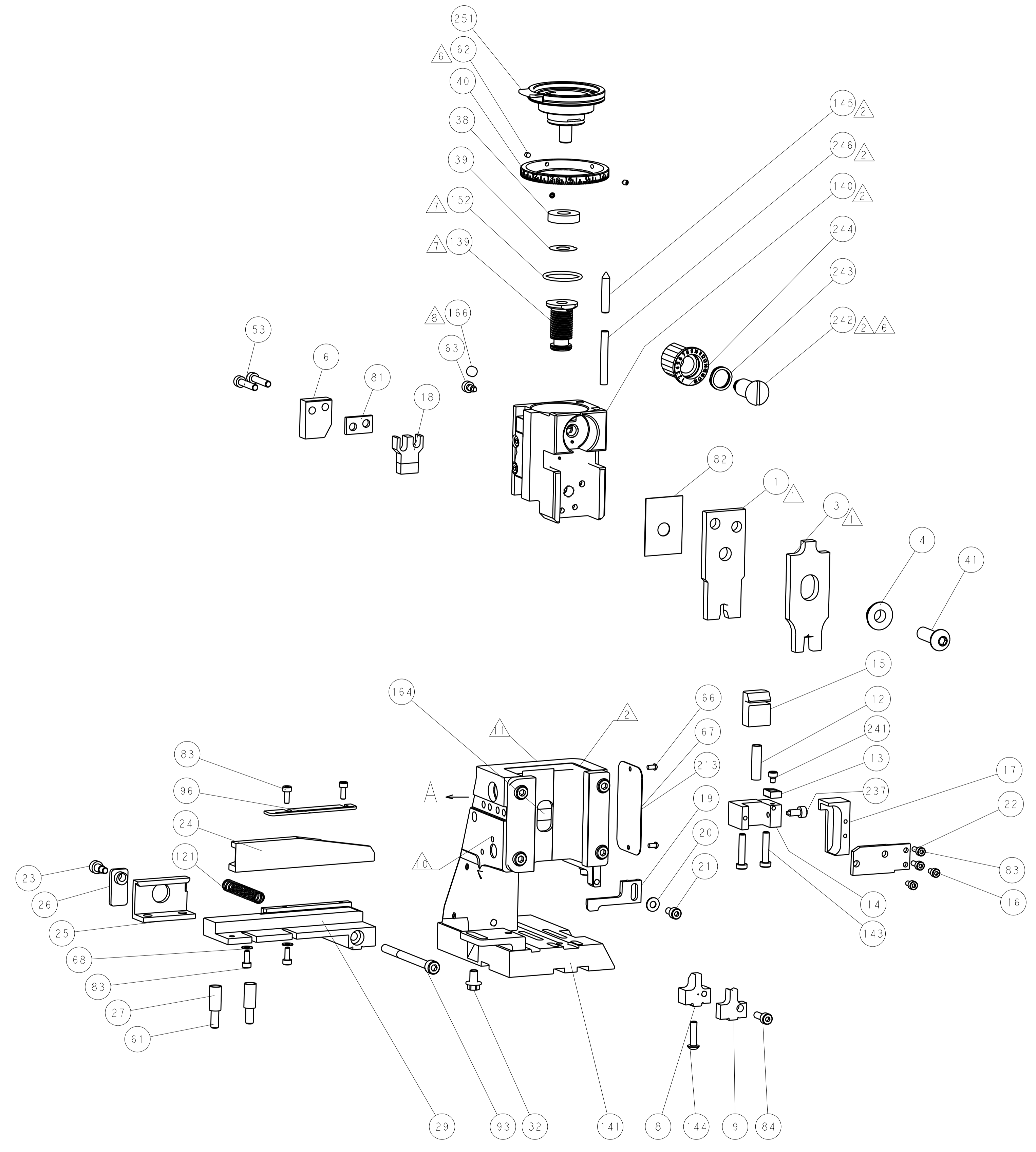
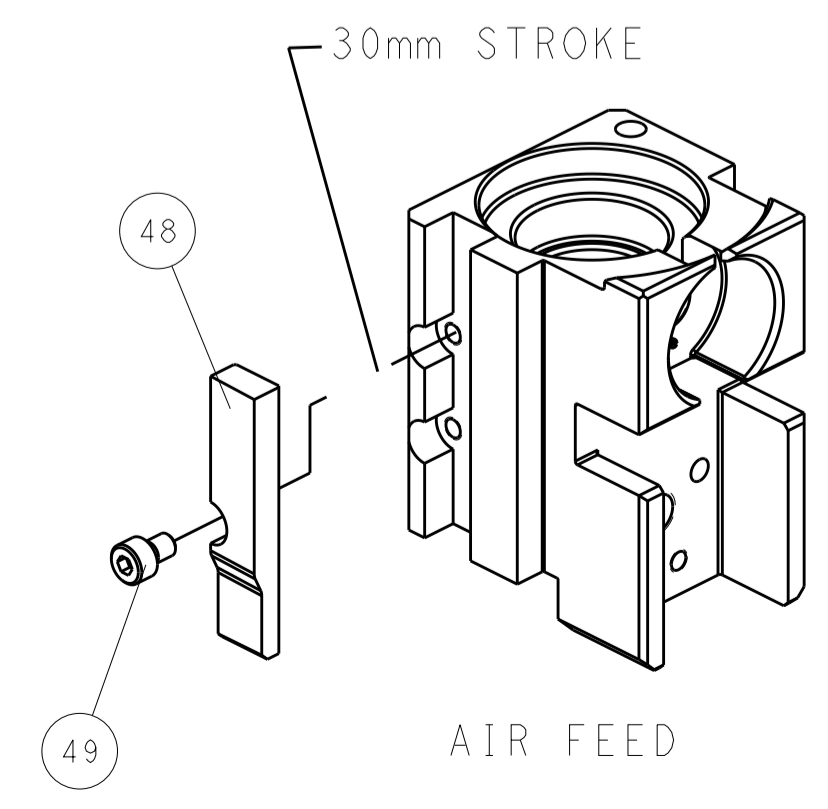
### PNEUMATIC



### SERVO LATCH PLATE



### CAM POSITION



**PACIFIC VERSION**  
 Shown on sheets 3 of 4 & 4 of 4  
 (Atlantic version shown on sheets 1 of 4 & 2 of 4)

<small>THIS DRAWING IS UNPUBLISHED. RELEASED FOR PUBLICATION. IT IS THE PROPERTY OF TYCO ELECTRONICS CORPORATION AND IS TO BE USED ONLY FOR THE PURPOSES AND IN THE QUANTITIES SPECIFIED IN THE ORDER. IT IS SUBJECT TO CHANGE AND WITHOUT WARRANTY OF MERCHANTABILITY OR FITNESS FOR ANY PARTICULAR PURPOSE. IT IS THE BUYER'S RESPONSIBILITY TO CONTACT THE SELLER FOR THE LATEST REVISION.</small>		DWN: BOB HIGMAN 18OCT2013 CHK: G. BAILEY 18OCT2013 APVD: M. CLIFFORD 18OCT2013	NAME: STE TE Connectivity Harrisburg, PA 17105-3608
DIMENSIONS: mm 	TOLERANCES UNLESS OTHERWISE SPECIFIED: 0 PLC ±.5 1 PLC ±0.5 2 PLC ±0.13 3 PLC ±0.013 4 PLC ±0.001 ANGLES ±.1	PRODUCT SPEC: APPLICATION SPEC:	SIZE: A1 CAGE CODE: 00779 DRAWING NO: C=2266077
MATERIAL:	FINISH:	WEIGHT:	RESTRICTED TO:
Customer Accessible Production Drawing		SCALE: 1:2	SHEET 4 OF 4 REV A