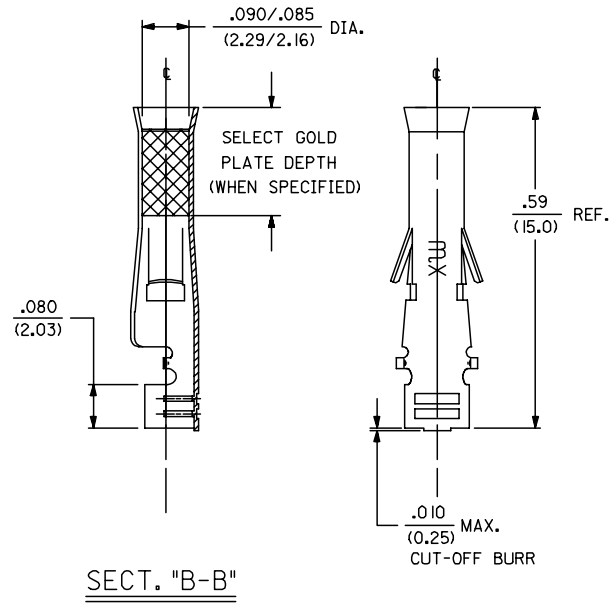
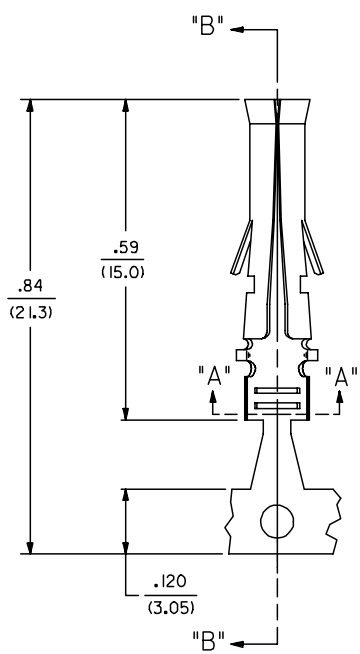
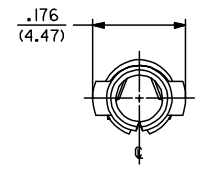
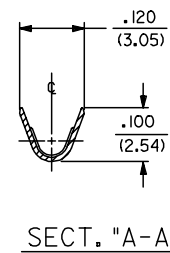


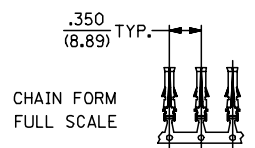
13 12 11 10 9 8 7 6 5 4 3 2 1

PART NO.	ENG. NO.
NOT TOOLED	42464-(P90)IL
02-09-1651	42464-(P90)I
NOT TOOLED	42464-(P550)IL
NOT TOOLED	42464-(P550)
NOT TOOLED	42464-(P558)IL
NOT TOOLED	42464-(P558)



**LEGEND**  
42464-(\*\*\*\*)\*  
P=PREPLATE  
BLANK=POSTPLATE  
FORM  
BLANK=CHAIN  
L=LOOSE  
FINISH CODE

- NOTES:
- 1. MATERIAL: CARTRIDGE BRASS, ALLOY #C26000 .008/(0.20) THICK.
  - 2. FINISH CODES:
    - 901 HOT TIN DIP .000020/(0.00051) MIN.
    - 550 SELECT GOLD PLATE .000015/(0.00038) MIN. IN CONTACT AREA, OVER .000030/(0.00076) MIN. NICKEL OVERALL WITH .000010/(0.00025) MAX. GOLD FLASH OVERALL.
    - 558 SELECT GOLD PLATE .000030/(0.00076) MIN. IN CONTACT AREA, OVER .000050/(0.00127) MIN. NICKEL OVERALL WITH .000010/(0.00025) MAX. GOLD FLASH OVERALL.
  - 3. PRODUCT SPECIFICATION: NONE
  - 4. TERMINAL FOR USE WITH .093/(2.36) SERIES HOUSINGS AND WILL ACCEPT 16 THRU 20 AWG WIRE.
  - 5. PULL OUT FORCE: 20 LBS. MIN. RETENTION IN HOUSING.



UPDATE NOTES EC NO: UCP2006-2415 DRAWN/PI/DER 2006/05/16 CHKD: AEL/HAG 2006/05/22 APPR: FSM/JH 2006/05/22	DESCRIPTION	QUALITY SYMBOLS ◻=0 ▽=0	GENERAL TOLERANCES (UNLESS SPECIFIED)		DIMENSION STYLE		SCALE	DESIGN UNITS	THIRD ANGLE PROJECTION
			mm	INCH	IN/MM		6:1	INCH	SEE CHART
			4 PLACES ±---	±---	DRAWN BY	DATE	TITLE		
			3 PLACES ±---	±.010	GEP	02/09/89	.093/(2.36) DIA. SOCKET W/O INSULATION CRIMP FOR 16 THRU 20 AWG. WIRE		
2 PLACES ±0.25	±.014	CHECKED BY	DATE						
1 PLACE ±0.35	±---	RW	02/09/89						
ANGULAR ±1/2°		APPROVED BY	DATE	MOLEX MOLEX INCORPORATED					
DRAFT WHERE APPLICABLE MUST REMAIN WITHIN DIMENSIONS		MATERIAL NO.	DOCUMENT NO.		SHEET NO.				
SIZE C		SEE CHART	SD-42464-*		1 OF 1				
THIS DRAWING CONTAINS INFORMATION THAT IS PROPRIETARY TO MOLEX INCORPORATED AND SHOULD NOT BE USED WITHOUT WRITTEN PERMISSION									

12 11 10 9 8 7 6 5 4 3 2 1