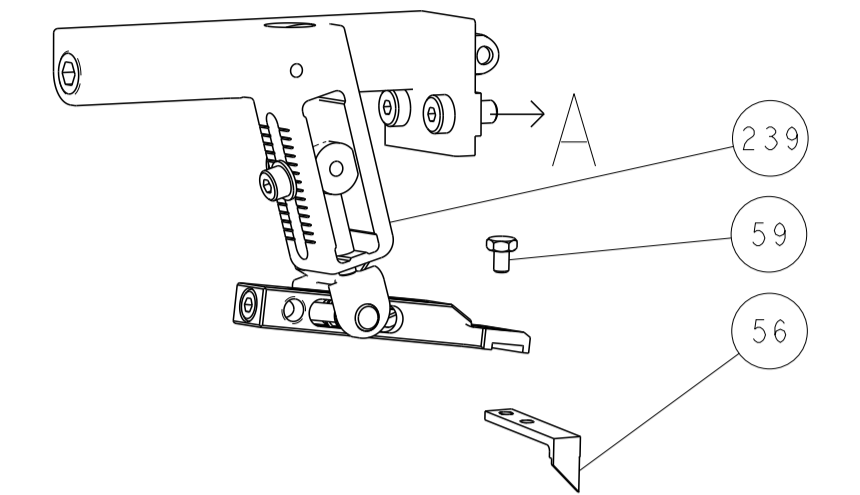
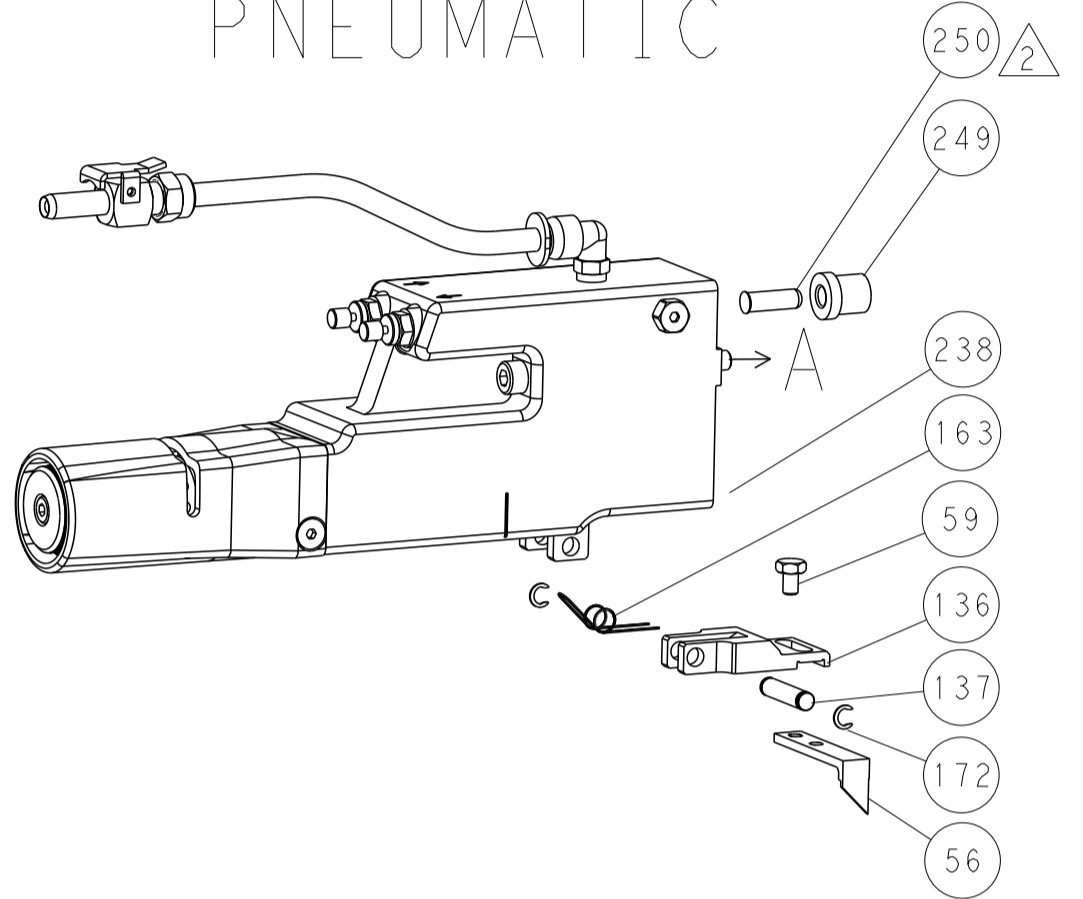


LOC	DIST	REVISIONS			
A	66	REV	DATE	BY	APPV
		1	SEE SHEET 1		

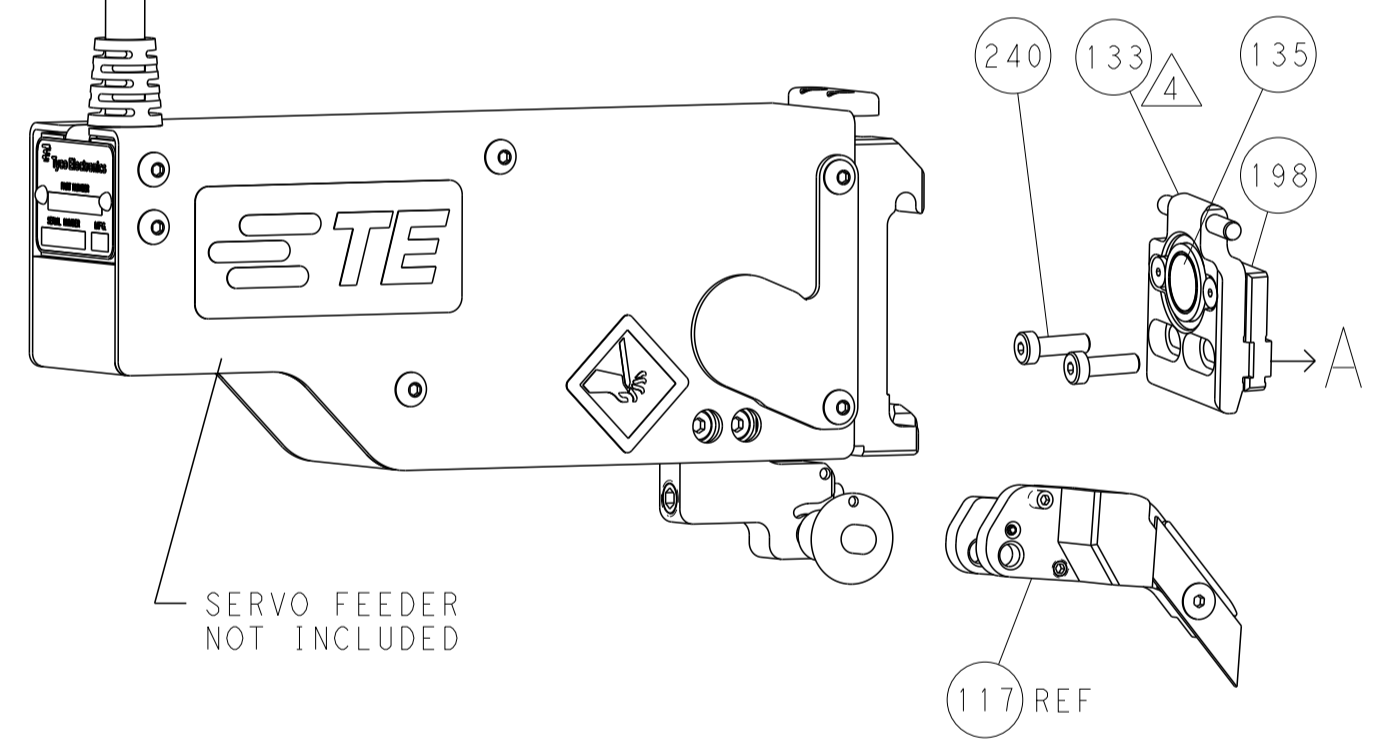
FEED TYPE MECHANICAL



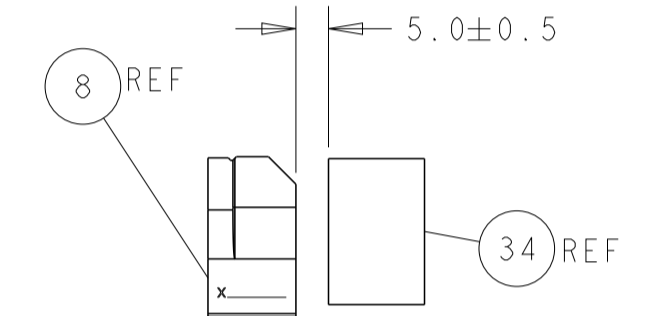
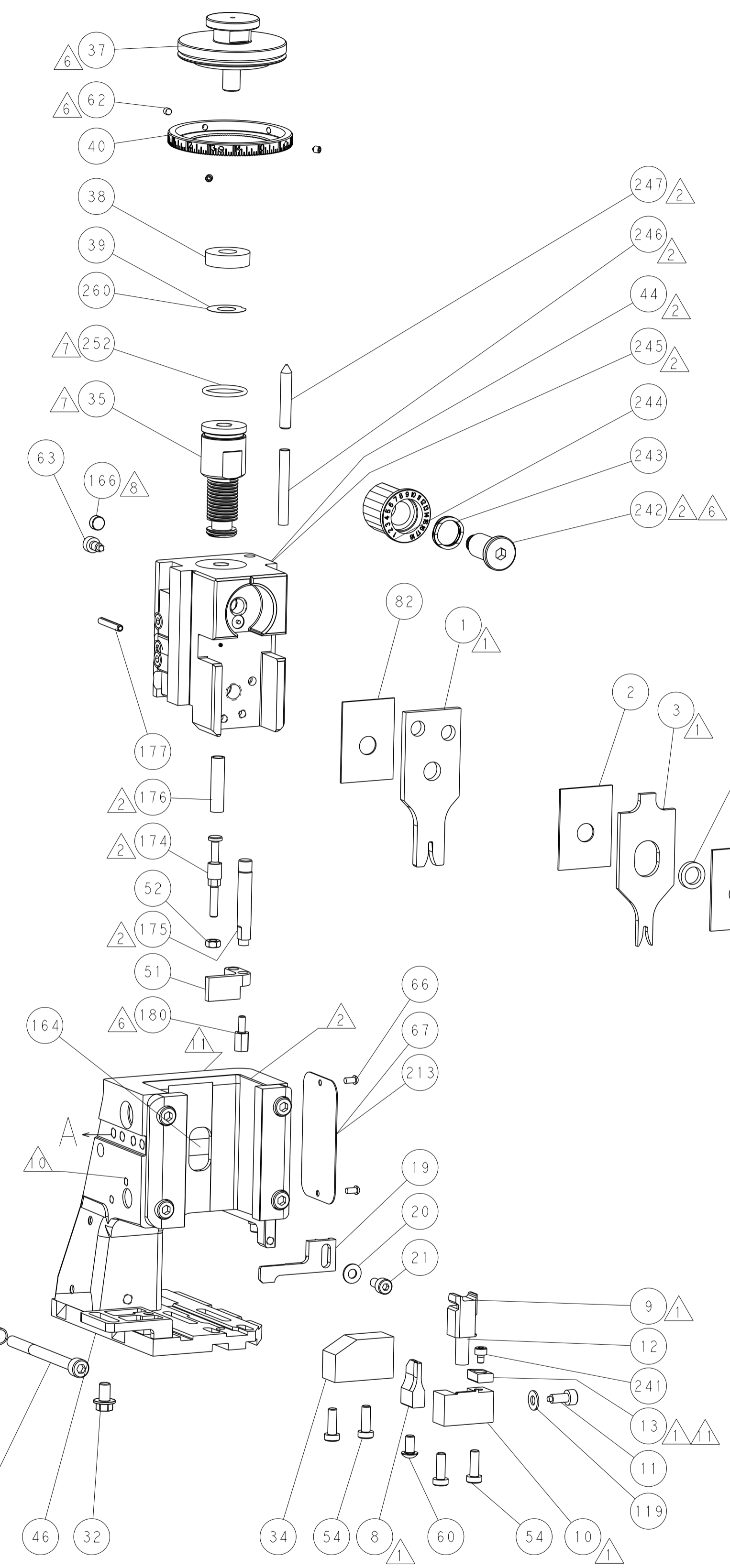
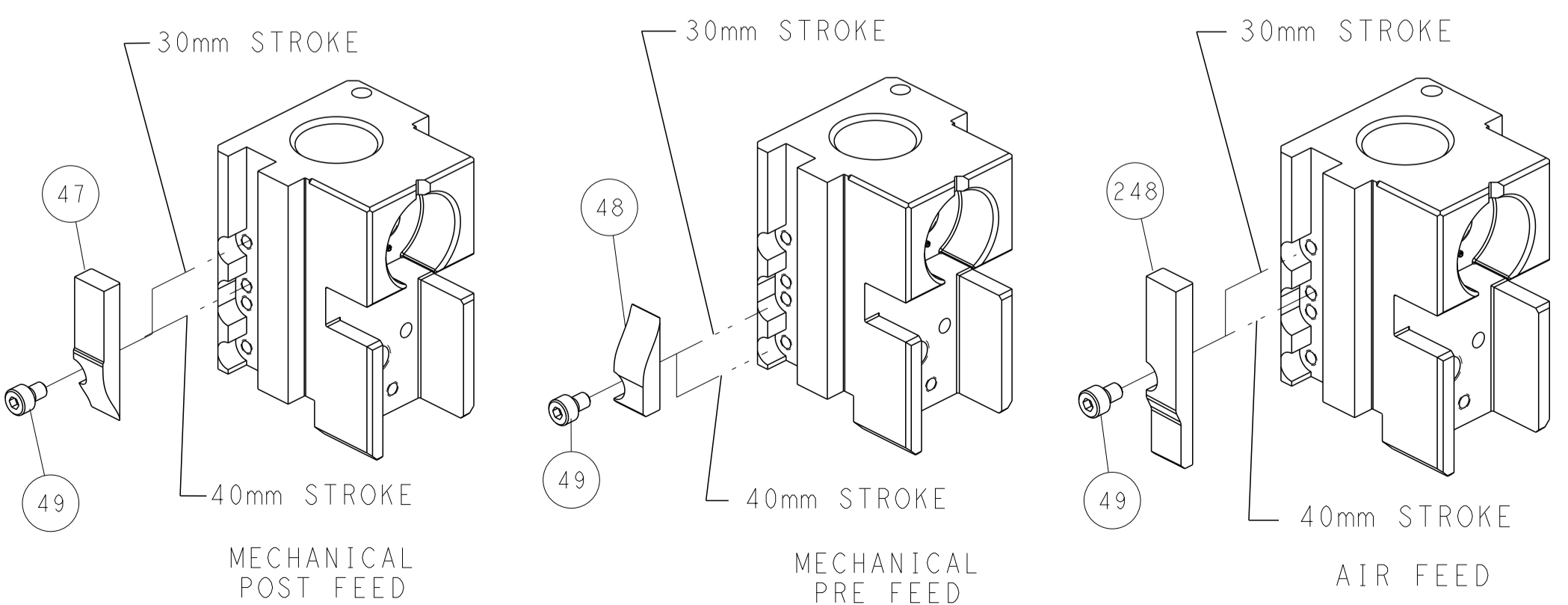
PNEUMATIC



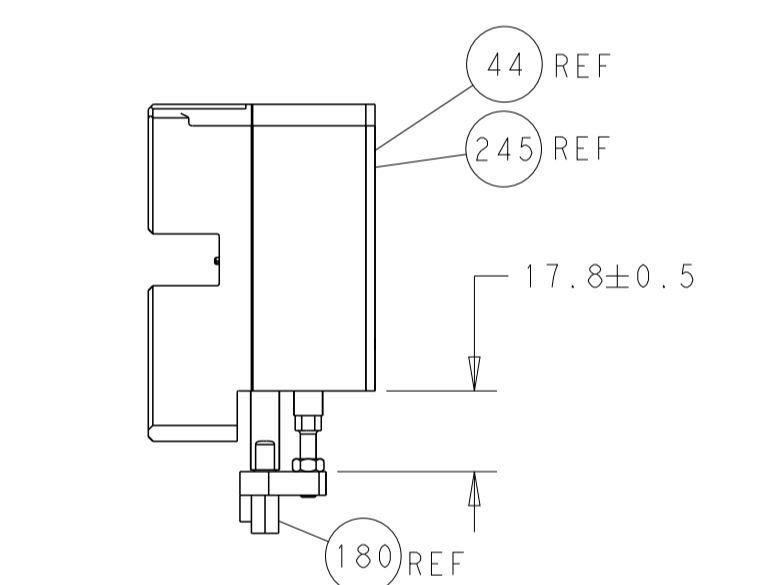
SERVO LATCH PLATE



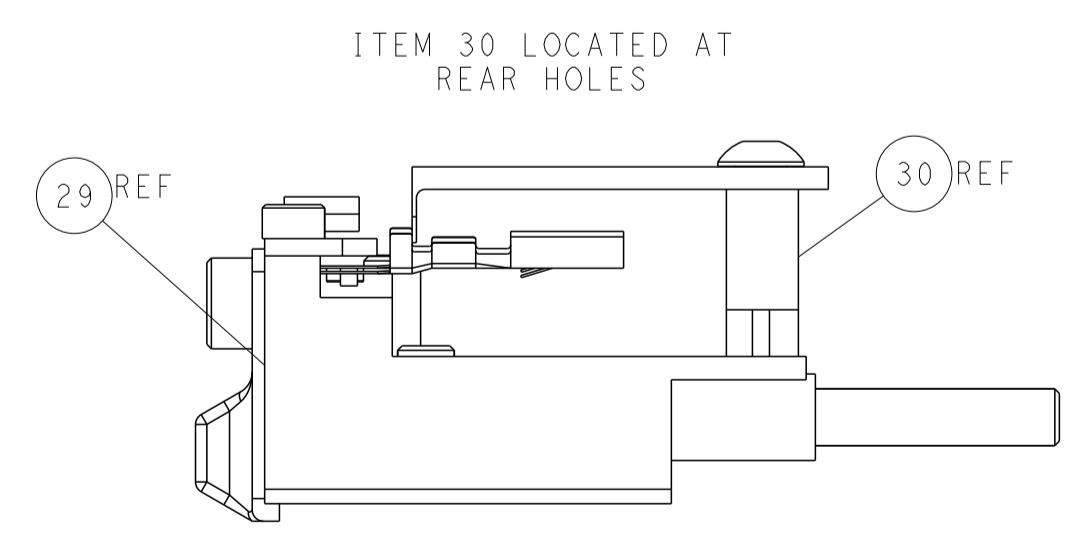
CAM POSITIONS



TERMINAL SUPPORT LOCATION



HOLDDOWN SET-UP



FEED TRACK POSITION GUIDE BY INSULATION BARREL

ATLANTIC VERSION
 Shown on sheets 1 of 4 & 2 of 4
 (Pacific version shown on sheets 3 of 4 & 4 of 4)

DIMENSIONS: mm		TOLERANCES UNLESS OTHERWISE SPECIFIED:		DWN H. HUANG 08NOV2012		TE Connectivity	
0 PLC ±0.5		1 PLC ±0.5		CHK S.XI 08NOV2012		Harrisburg, PA 17105-3608	
2 PLC ±0.13		3 PLC ±0.013		APPV S.XI 08NOV2012		NAME Ocean Side Feed Applicator	
4 PLC ±0.001		ANGLES ±		PRODUCT SPEC		SIZE CAGE CODE DRAWING NO RESTRICTED TO	
MATERIAL		FINISH		WEIGHT		A1 00779 ©=2151803	
				Customer Accessible Production Drawing		SCALE 1:2 SHEET 2 OF 4 REV E1	

APPLICATOR STYLE CONVERSION CHART. Table with columns: CONVERT TO, PART NUMBERS REQUIRED. Includes rows for PNEUMATIC FEED, SERVO LATCH PLATE, SMART APPLICATOR, MECHANICAL FEED, and PNEUMATIC FEED.

APPLICATOR DATA. Table with columns: CRIMP SIZE TYPE, WIRE SIZE, INSUL SIZE. Includes APPLICATOR INSTRUCTIONS 408-10389.

TERMINAL DATA: YAZAKI TERMINAL YAZAKI CRIMP SPECIFICATION. Terminal name: 1.5 SYSTEM CONNECTOR FEMALE TERMINAL. Includes WIRE STRIP LENGTH and INSULATION DIAMETER RANGE.

TERMINAL DATA: YAZAKI TERMINAL YAZAKI CRIMP SPECIFICATION. Terminal name: 1.5 SYSTEM CONNECTOR TERMINAL (TAB). Includes WIRE STRIP LENGTH and INSULATION DIAMETER RANGE.

TERMINAL DATA: YAZAKI TERMINAL YAZAKI CRIMP SPECIFICATION. Terminal name: 1.5 SYSTEM CONNECTOR TERMINAL (TAB). Includes WIRE STRIP LENGTH and INSULATION DIAMETER RANGE.

WIRE SIZE, CRIMP HEIGHT mm [INCH], CRIMP HEIGHT REFERENCE SETTING. Table with 3 columns.

WIRE SIZE, CRIMP HEIGHT mm [INCH], CRIMP HEIGHT REFERENCE SETTING. Table with 3 columns.

WIRE SIZE, CRIMP HEIGHT mm [INCH], CRIMP HEIGHT REFERENCE SETTING. Table with 3 columns.



- RECOMMENDED SPARE PARTS
GREASE BEARING SURFACES LIGHTLY
LUBRICATE DAILY PER THE APPLICATOR INSTRUCTION SHEET SUPPLIED WITH THE APPLICATOR.
APPLICATOR SPECIFIC DATA TO BE ENTERED INTO BLANK MEMORY CHIP AT ASSEMBLY...

*WARNING
ON INSTALLATION, SET WIRE DISC, ITEM 40 TO LARGEST WIRE SIZE SETTING. USE OF SETTINGS BELOW MINIMUM REQUIRED CRIMP HEIGHT SETTING WILL CAUSE DAMAGE TO CRIMP TOOLING.

Table with columns: PART NO, DESCRIPTION, ITEM NO. Lists various spare parts like FINE ADJUST HEAD ASM, PUSH ROD, BUSHING, etc.

PACIFIC VERSION
Shown on sheets 3 of 4 & 4 of 4
(Atlantic version shown on sheets 1 of 4 & 2 of 4)

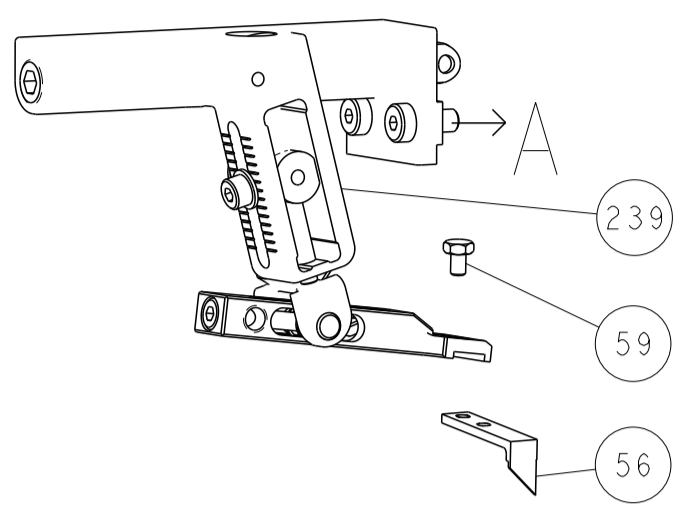
REVISIONS table with columns: P, LTM, DESCRIPTION, DATE, DWN, APVD. Includes revision 1: SEE SHEET 1.

Main parts list table with columns: P, LTM, DESCRIPTION, DATE, DWN, APVD. Lists numerous components like SPACER, FEEDER, STANDOFF, PIN, SPRING, etc.

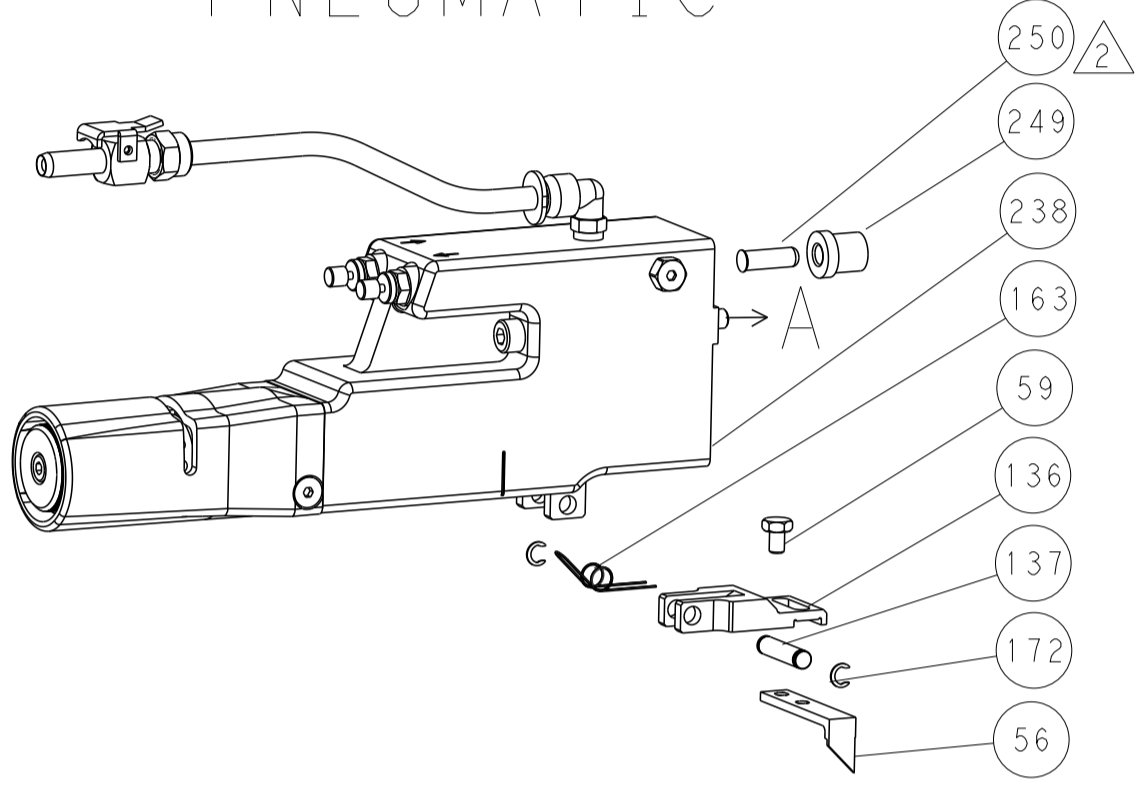
Customer Accessible Production Drawing. Includes fields for DIMENSIONS, TOLERANCES, MATERIAL, WEIGHT, SCALE, SHEET 3 OF 4, REV E1.

LOC	DIST	REVISIONS					
A	66	P	LTN	DESCRIPTION	DATE	DWN	APVD
		-		SEE SHEET 1			

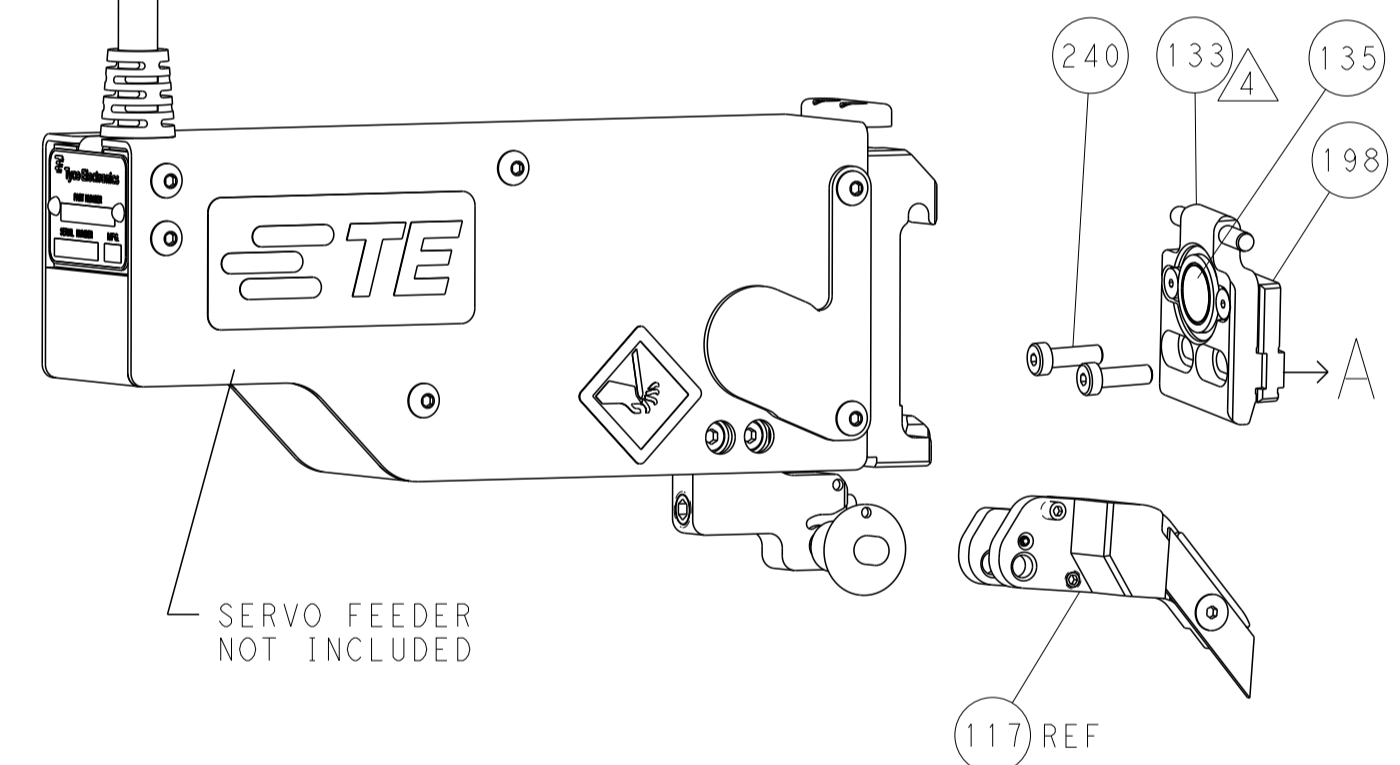
FEED TYPE MECHANICAL



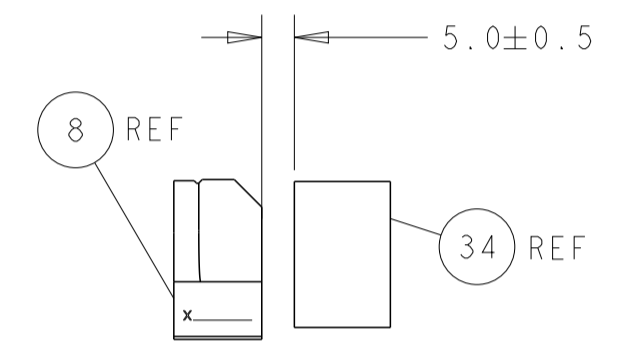
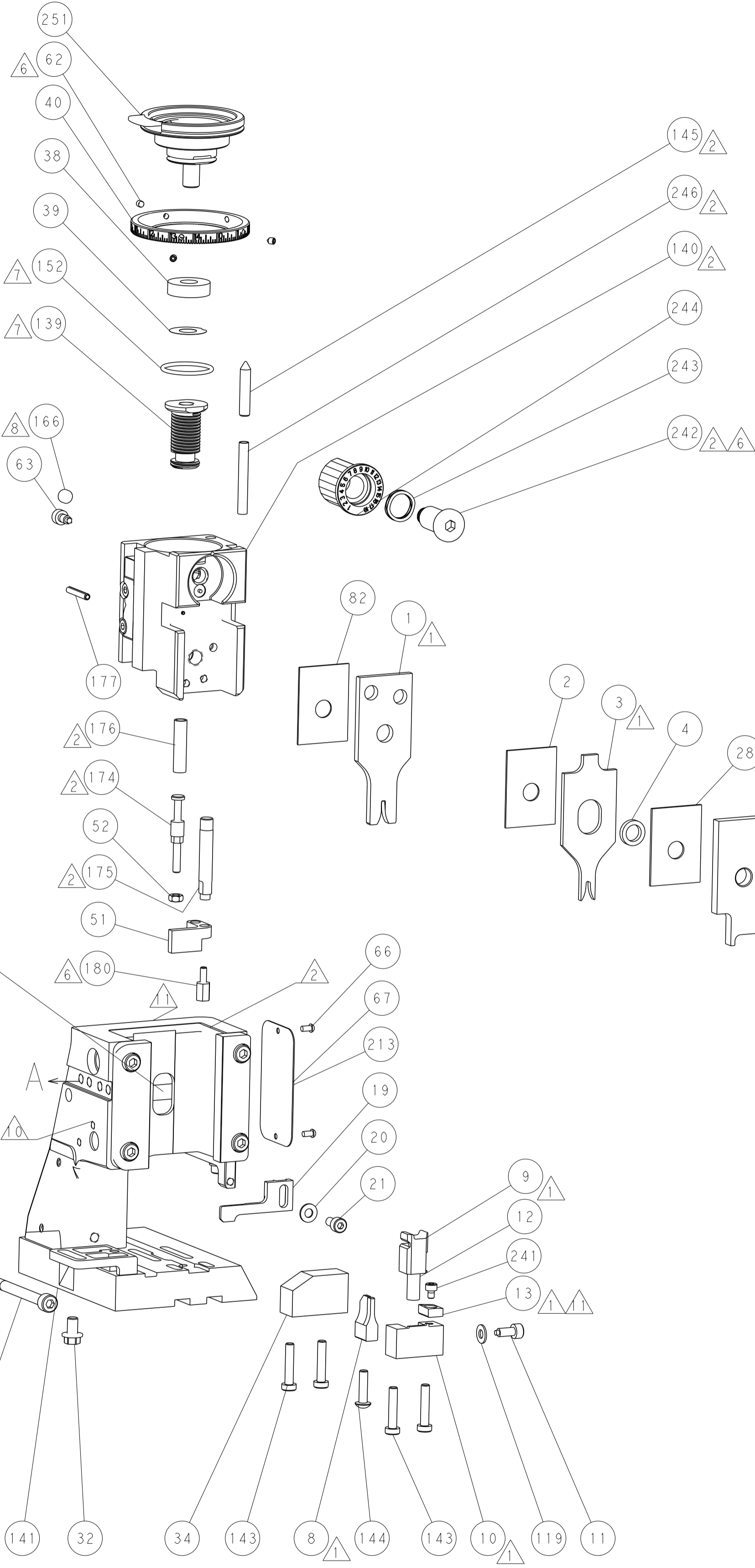
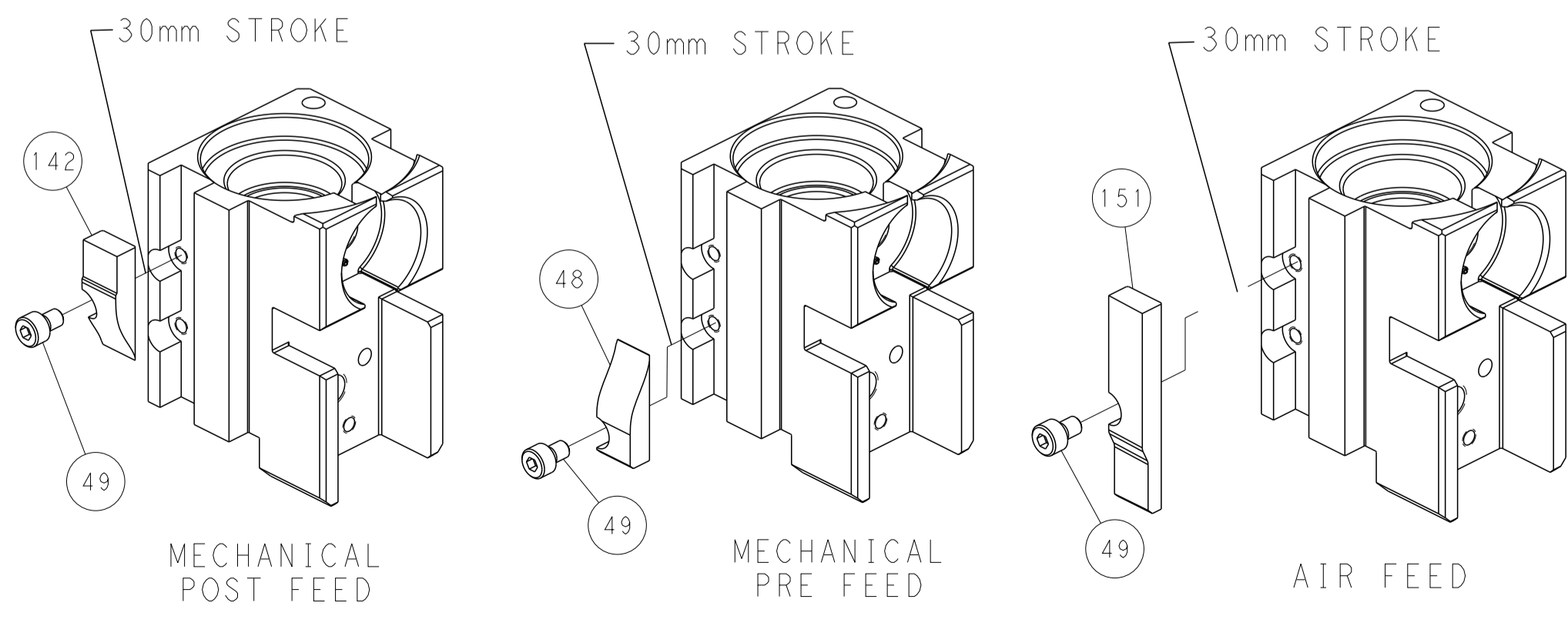
PNEUMATIC



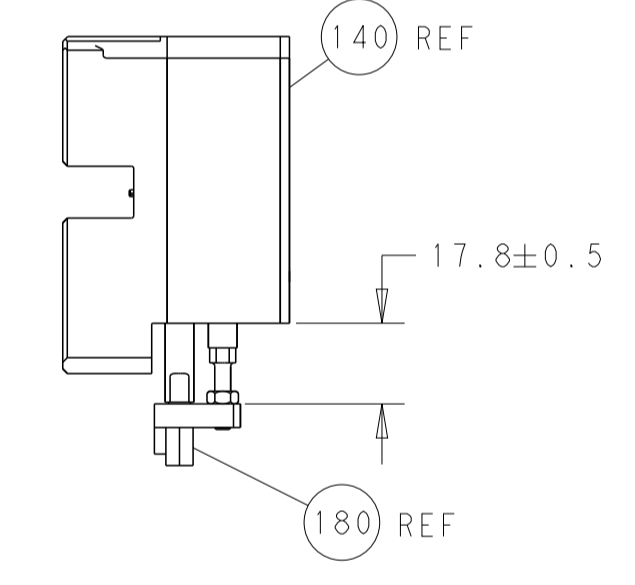
SERVO LATCH PLATE



CAM POSITIONS

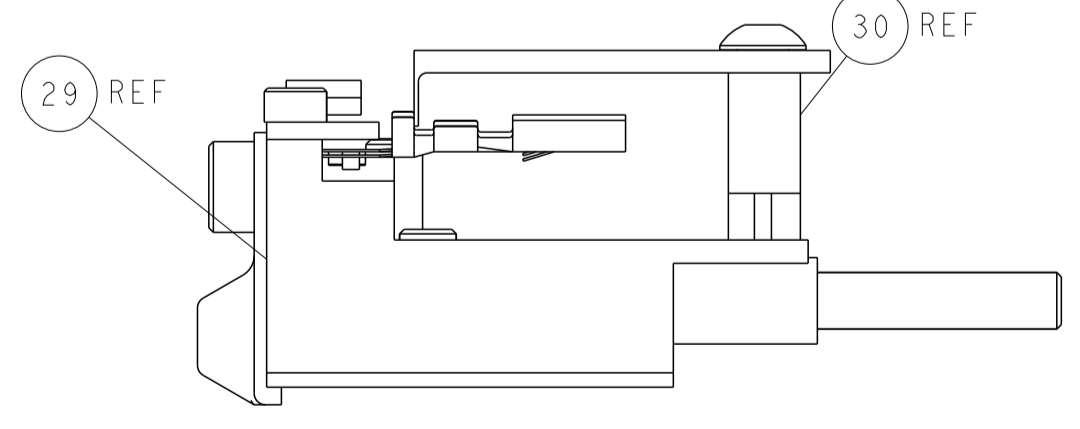


TERMINAL SUPPORT LOCATION



HOLDDOWN SET-UP

ITEM 30 LOCATED AT REAR HOLES



FEED TRACK POSITION GUIDE BY INSULATION BARREL

PACIFIC VERSION
 Shown on sheets 3 of 4 & 4 of 4
 (Atlantic version shown on sheets 1 of 4 & 2 of 4)

DIMENSIONS: mm 		TOLERANCES UNLESS OTHERWISE SPECIFIED: 0 PLC ±.5 1 PLC ±0.5 2 PLC ±0.13 3 PLC ±0.013 4 PLC ±0.001 ANGLES FINISH ±.		DWN H. HUANG 08NOV2012 CHK S. XI 08NOV2012 APVD S. XI 08NOV2012 PRODUCT SPEC APPLICATION SPEC WEIGHT Customer Accessible Production Drawing		NAME Ocean Side Feed Applicator SIZE CAGE CODE DRAWING NO. A1 00779 C=2151803 SCALE 1:2 SHEET 4 OF 4 REV E1		RESTRICTED TO TE Connectivity Harrisburg, PA 17105-3608	
--------------------	--	--	--	---	--	---	--	--	--