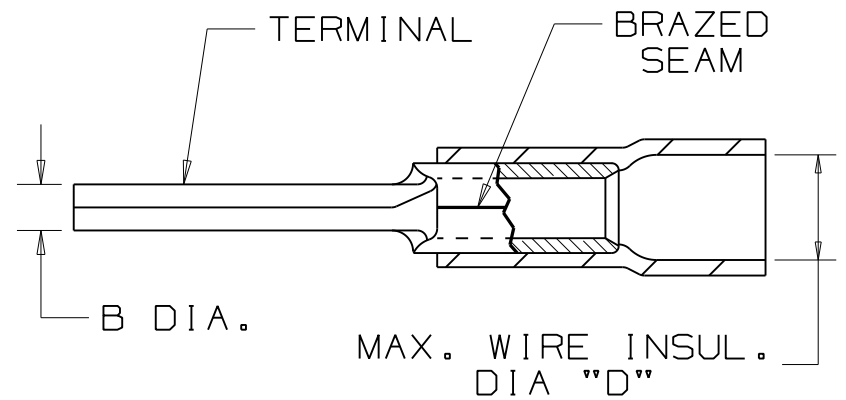


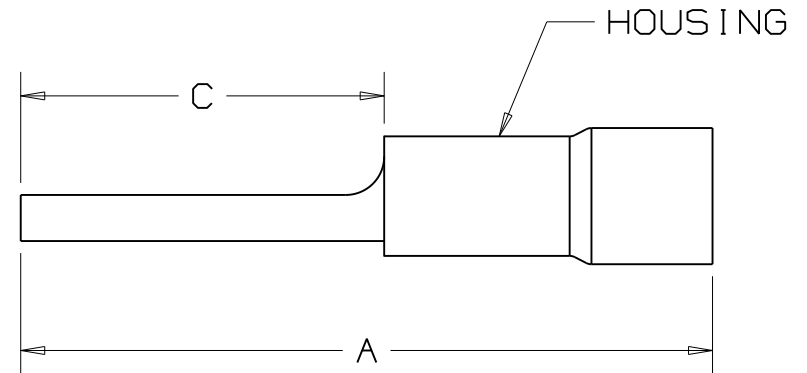
THIS COPY IS PROVIDED ON A RESTRICTED BASIS AND IS NOT TO BE USED IN ANY WAY DETRIMENTAL TO THE INTERESTS OF PANDUIT CORP.

PANDUIT PART NUMBER		WIRE SIZE AWG	DIMENSIONS in.				HOUSING COLOR
PREFIX	PK		A $\pm .03$ $(\pm .8)$	B DIA. $\pm .01$ ( $\pm .3$ )	C $\pm .02$ $(\pm .3)$	D DIA.	
PV18-P47	-CY -MY	22-18 (1.5-1.0)	.97 (24,6)	.07 (1,8)	.49 (12,4)	.15 (3,8)	RED
PV14-P47	-C -M	16-14 (1.5-2.5)	.97 (24,6)	.07 (1,8)	.49 (12,4)	.17 (4,3)	BLUE
PV10-P55*	-LY -DY	12-10 (4.0-6.0)	1.10 (27,9)	.10 (2,5)	.55 (14,0)	.25 (6,35)	YELLOW



NOTES:

- RECOMMENDED FOR:  
A. SOLID OR STRANDED COPPER WIRE
- MATERIAL:  
A. STAMPING - COPPER, TIN PLATED  
B. HOUSING - VINYL, COLOR CODED
- PACKAGE QTY: STD. PKG. -LY=50, -C, -CY=100  
BULK PKG. -DY=500, -M, -MY=1000
- DIMENSIONS IN BRACKETS ARE IN mm or mm<sup>2</sup>
- Tools:  
PANDUIT APPROVED: CT-100, CT-160,  
CT-550CH, CT-500CH  
(EXCEPT PV10-P55)CT-1550, CT-1551
- WIRE STRIP LENGTH 5/16 <sup>+1/32</sup><sub>-0</sub> (7,9 <sup>+B</sup><sub>-0</sub>)



\* Not UL Listed



LISTED  
587H  
E52164

**PANDUIT** CORP.

TINLEY PARK, ILLINOIS

VINYL INSULATED PIN TERMINAL

REV	DATE	BY	CHK	DESCRIPTION	DRAWN BY	CHK'D	SCALE	DRAWING NO.
11	6/11	SRB		Added asterisk for PV10-P55 *Not UL Listed	DAW	RLS	NONE	A41335