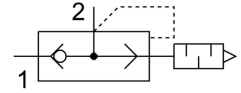


Quick exhaust valve SEU-1/2

Part number: 6822

FESTO



Data sheet

Feature	Value
Valve function	Quick exhaust
Selection of additional function	With silencer
Pneumatic connection 1	G1/2
Pneumatic connection 2	G1/2
Type of mounting	Screw-in
Standard nominal flow rate exhaust air 6→5 bar	4020 l/min
Standard flow rate exhaust 6→0 bar	6500 l/min
Standard nominal flow rate pressurization 6→5 bar	4560 l/min
Operating pressure	0.3 bar ... 10 bar
Ambient temperature	-20 °C ... 75 °C
Housing material	Die-cast aluminum
Operating medium	Compressed air as per ISO 8573-1:2010 [7:-:-]
Nominal width	15 mm
Mounting position	Any
Symbol	00991460
Information on operating and pilot media	Operation with oil lubrication possible (required for further use)
Temperature of medium	-20 °C ... 75 °C
Noise level	86 dB(A)
Product weight	320 g
Seals material	NBR