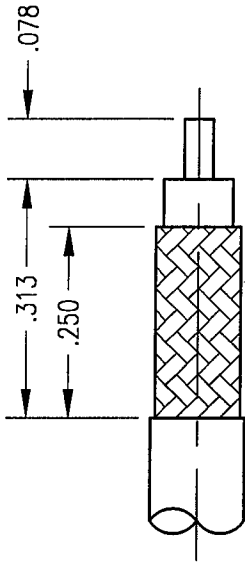
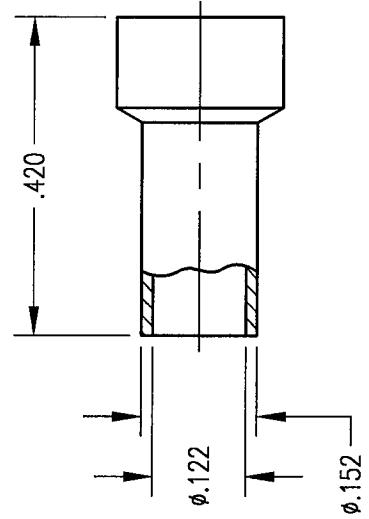
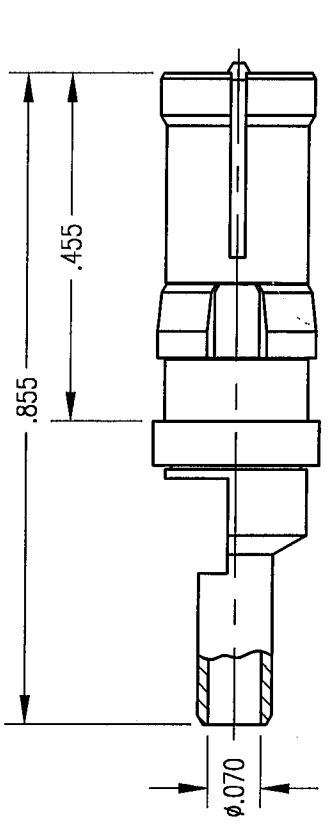


DWC. NO.		201-910-0630G	
REV	DESCRIPTION	DATE	APPD
D	NPR 1705	3/2/00	<i>[Signature]</i>



CABLE TRIMMING DIMENSIONS

- NOTES:
1. MATERIALS:
 FRONT BODY: BERYLLIUM COPPER PER ASTM B196
 CLIP RING: PHOSPHOR BRONZE PER ASTM B103
 ALL OTHER METAL PARTS: BRASS PER ASTM B16
 INSULATOR: TEFLON PER ASTM D1710
 2. FINISH:
 BODY AND CENTER CONTACT: .000030 MIN. GOLD PER MIL-G-45204 OVER
 .000050 MIN. NICKEL PER QQ-N-290
 FERRULE: .000005 MIN. GOLD PER MIL-G-45204 OVER
 .000050 MIN. NICKEL PER QQ-N-290
 CLIP RING: .000100 MIN. NICKEL PER QQ-N-290
 OVER COPPER FLASH
 3. ELECTRICAL:
 IMPEDANCE: 50 OHMS NOMINAL
 FREQUENCY RANGE: 0 - 900 MHZ
 DESIGNED FOR USE WITH RG-316 CABLE OR EQUIVALENT.
 4. FOR CABLING PROCEDURES USE CAP 9-01 WITH TRIMMING DIMENSIONS SHOWN.
 6. CRIMP FERRULE USING .128 HEX DIE.

PER ASME Y14.5M-1994 UNLESS OTHERWISE SPECIFIED: DIMENSIONS ARE IN INCHES (MM)		Winchester/Retconn <small>400 Park Road Hartford, Connecticut 06185</small>	
TOLERANCES: DECIMALS XX ± .01/0.254 FRACTIONS XXX ± .005/0.127 ANGLES ± Z° SCALE: 4:1		Litton Winchester/Retconn	
CUSTOMER DRAWING		TITLE RDM STRAIGHT RECEPTACLE	
DRAWN JED	DATE 3/2/00	CHECKED JH	DATE 3-2-00
APPROVED <i>[Signature]</i>	DATE 3/22/00	PREPARED JED	DATE 3/2/00
A 201-910-0630G		1 1 D	