

IEC Appliance Inlet C10, Screw-on Mounting, Front Side, Solder or Quick-connect Terminal



C10



70 °C

**Description**

- Panel Mount:
- Screw-on mounting, from front side
- Appliance Inlet, Pin temperature 70 °C, Protection class II
- Solder terminals or quick connect terminals

Approvals

- VDE License Number: 40009507
- UL License Number: E96454
- CSA License Number: 27324

References

[General Product Information](#)

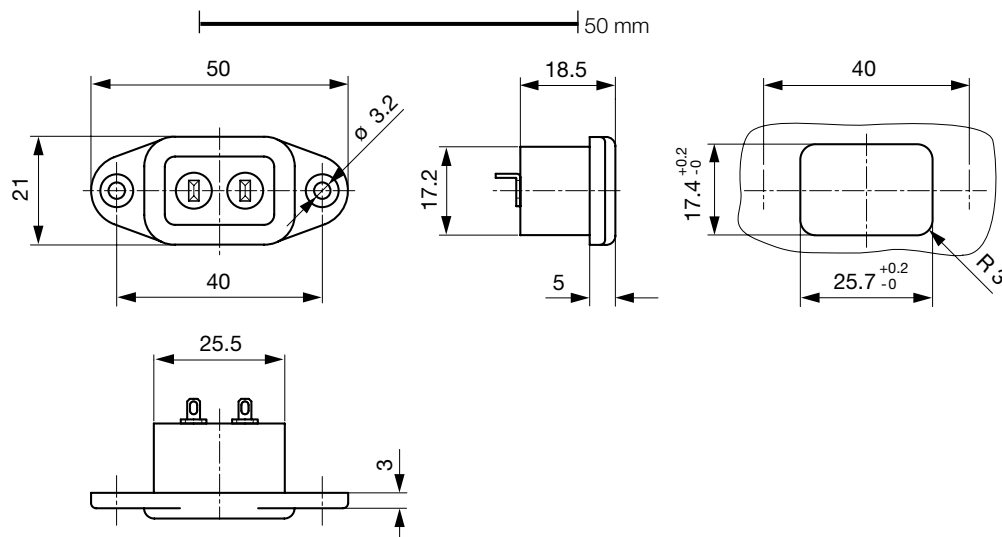
Weblinks

[Approvals](#), [RoHS](#), [CHINA-RoHS](#), [Mating Connectors](#), [Distributor-Stock-Check](#), [Accessories](#)

Technical Data

Ratings IEC	6 A / 250VAC; 50Hz
Ratings UL/CSA	6 A / 250VAC; 60Hz
Dielectric Strength	> 3kVAC between L-N > 1.5kVAC between L/N-PE (1 min/50Hz)
Allowable Operation Temp.	-25 °C to 70 °C
Degree of Protection	from front side IP 20 acc. to IEC 60529
Protection Class	Suitable for appliances with protection class 2 acc. to IEC 61140
Material: Housing	PA, UL 94V-0

Appliance Inlet	C10 acc. to IEC/EN 60320-1 UL 498, CSA C22.2 no. 42 (for cold conditions) pin-temperature 70 °C, 6A, Protection Class 2
-----------------	--

Dimensions

Length of the terminal please find at the order code configuration table

Config. Code

Product Configurator

6075 - H - A B C 0 - D - E

The characters are placeholders for the correspondingly keys of selections from the key tables.

6075 - H - A B C 0 - D - E = Type

Type	Configuration key
protection class 2	B

6075 - H - A B C 0 - D - E = Terminals

Terminal L	Configuration key
short solder terminal (L=4,8mm)	2
long solder terminal (L=8,5mm)	3
blade terminal (4,8x0,8mm)	8
blade terminal (6,3x0,8mm)	9

6075 - H - A B C 0 - D - E = Terminals

Terminal N	Configuration key
short solder terminal (L=4,8mm)	2
long solder terminal (L=8,5mm)	3
blade terminal (4,8x0,8mm)	8
blade terminal (6,3x0,8mm)	9

Symbols similar as in table A

6075 - H - A B C 0 - D - E = Terminals

Terminal Ground	Configuration key
without terminal	0

Symbols similar as in table A

6075 - H - A B C 0 - D - E = Color

Color	Configuration key
jet black; RAL9005	A
silver grey; RAL7001	B
pure white; RAL9010	D

standard color: black

6075 - H - A B C 0 - D - E = Style

Style	Configuration key
flange with countersunk holes	1
flange with through holes	2

Variants

Config. Code	Description	Order Number
6075-X-2200-A-1	6075, IEC Appliance Inlet C10, 70°C, , version: 2, L: short solder terminal (L=4,8mm), N: short solder terminal (L=4,8mm), ground: without terminal, color: jet black; RAL9005, design: flange with countersunk holes	6161.0001
6075-X-9900-A-1	6075, IEC Appliance Inlet C10, 70°C, , version: 2, L: blade terminal (6,3x0,8mm), N: blade terminal (6,3x0,8mm), ground: without terminal, color: jet black; RAL9005, design: flange with countersunk holes	6161.0002
6075-X-9900-B-2	6075, IEC Appliance Inlet C10, 70°C, , version: 2, L: blade terminal (6,3x0,8mm), N: blade terminal (6,3x0,8mm), ground: without terminal, color: silver grey; RAL7001, design: flange with through holes	6161.0003
6075-X-8800-A-1	6075, IEC Appliance Inlet C10, 70°C, , version: 2, L: blade terminal (4,8x0,8mm), N: blade terminal (4,8x0,8mm), ground: without terminal, color: jet black; RAL9005, design: flange with countersunk holes	6161.0004

The listed variants should be available from stock. Other versions on request www.schurter.com/contact

Packaging unit 50 Pcs

Mating Outlets/Connectors

Category / Description

[Plug Overview complete](#)

IEC Connector C9, Rewireable Appliance Internal

3017

[Plug further types to 6075](#)



[Power Cord Overview complete](#)

Power Cord with IEC Connector C9, Straight	3016
Power Cord with IEC Connector C9, Angled	9011

[Power Cord further types to 6075](#)