

Han K 3/2 Pos. Male Insert Screw

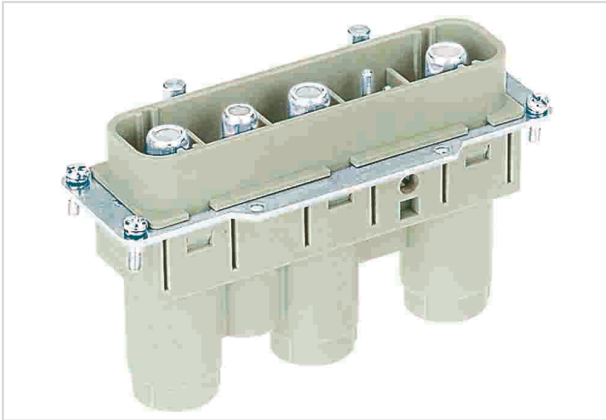


Image is for illustration purposes only. Please refer to product description.

Part number	09 38 005 2601
Specification	Han K 3/2 Pos. Male Insert Screw
HARTING eCatalogue	https://b2b.harting.com/09380052601

Identification

Category	Inserts
Series	Han-Com®
Identification	Han® K 3/2
Specification	Straight

Version

Termination method	Axial screw termination / screw termination
Gender	Male
Size	24 B
Number of contacts	3
further contacts	+ 2 additional signal contacts
PE contact	Yes

Technical characteristics

Conductor cross-section	35 ... 70 mm ² 0.5 ... 2.5 mm ² Signal 16 ... 35 mm ² PE
Rated current	200 A
Rated voltage conductor-earth	1,150 V
Rated voltage conductor-conductor	2,000 V
Rated impulse voltage	8 kV
Pollution degree	3
Rated current (signal)	16 A



Pushing Performance

Technical characteristics

Rated voltage (signal)	400 V
Rated impulse voltage (signal)	6 kV
Pollution degree (signal)	3
Rated current acc. to UL	200 A
Rated voltage acc. to UL	600 V
Rated current acc. to UL (signal)	16 A
Rated voltage acc. to UL (signal)	600 V
Rated current acc. to CSA	160 A
Rated voltage acc. to CSA	600 V
Rated current acc. to CSA (signal)	16 A
Rated voltage acc. to CSA (signal)	600 V
Insulation resistance	$>10^{10} \Omega$
Contact resistance	$\leq 0.2 \text{ m}\Omega$
Contact resistance, signal area	$\leq 1 \text{ m}\Omega$
Stripping length	22 mm
	7 mm Signal contacts
	14 mm PE contact
Tightening torque	8 Nm @ 35 mm ²
	9 Nm @ 50 mm ²
	10 Nm @ 70 mm ²
	0.5 Nm Signal contacts
	6 Nm PE contact
Limiting temperature	-40 ... +125 °C
Mating cycles	≥ 500

Material properties

Material (insert)	Polycarbonate (PC)
Colour (insert)	RAL 7032 (pebble grey)
Material (contacts)	Copper alloy
Surface (contacts)	Silver plated
Material flammability class acc. to UL 94	V-0
RoHS	compliant with exemption
RoHS exemptions	6(a) / 6(a)-I: Lead as an alloying element in steel for machining purposes and in galvanised steel containing up to 0,35 % lead by weight / Lead as an alloying element in steel for machining purposes containing up to 0,35 % lead by weight and in batch hot dip galvanised steel components containing up to 0,2 % lead by weight
	6(c): Copper alloy containing up to 4 % lead by weight



Pushing Performance

Material properties

ELV status	compliant with exemption
China RoHS	50
REACH Annex XVII substances	No
REACH ANNEX XIV substances	No
REACH SVHC substances	Yes
REACH SVHC substances	Lead
ECHA SCIP number	5dbb3851-b94e-4e88-97a1-571845975242

Specifications and approvals

Specifications	EN 60664-1 IEC 61984
Approvals	DNV GL
UL / CSA	UL 1977 ECBT2.E235076 CSA-C22.2 No. 182.3 ECBT8.E235076

Commercial data

Packaging size	1
Net weight	338.6 g
Country of origin	Germany
European customs tariff number	85366990
eCl@ss	27440205 Contact insert for industrial connectors