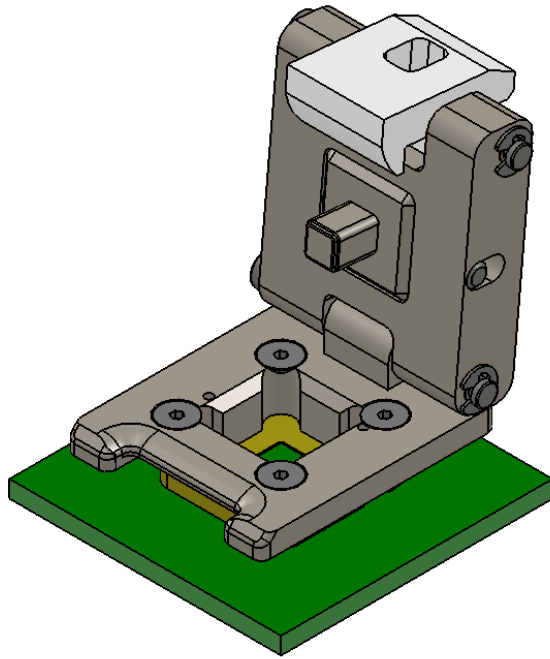
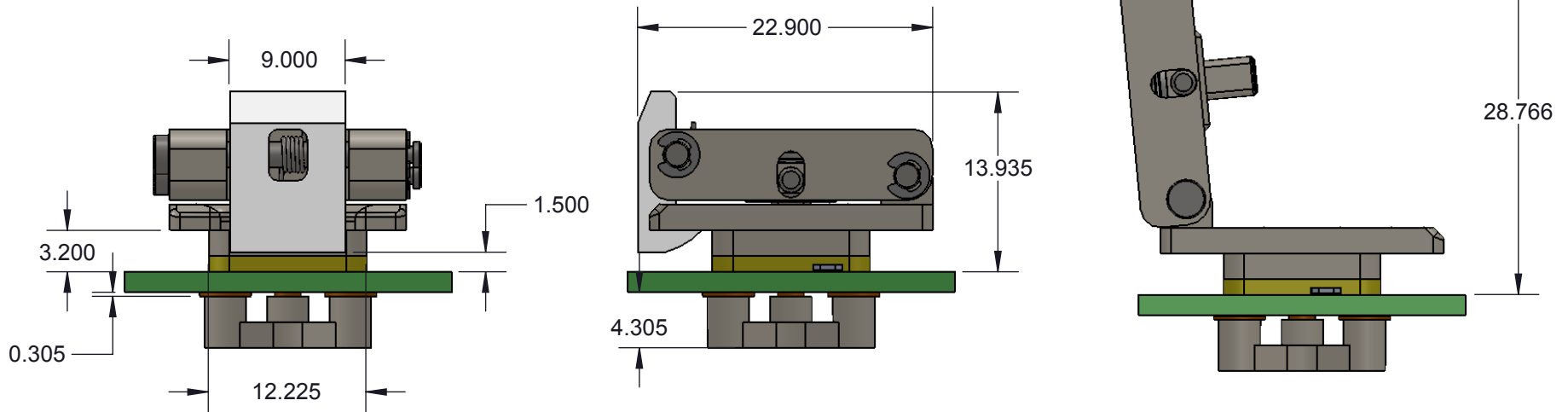


SM-QFN DIRECT MOUNT, SOLDERLESS SOCKET FOR BURN-IN AND TEST APPLICATIONS




- FEATURES:
- Wide temperature range (-55C to +180C).
 - High current capability (up to 4A).
 - Over 40GHz bandwidth @ -1dB for edge pins
 - Low and stable contact resistance for reliable production yield.
 - Self inductance under 0.21nH
 - Highly compliant to accommodate wide co-planarity variations.

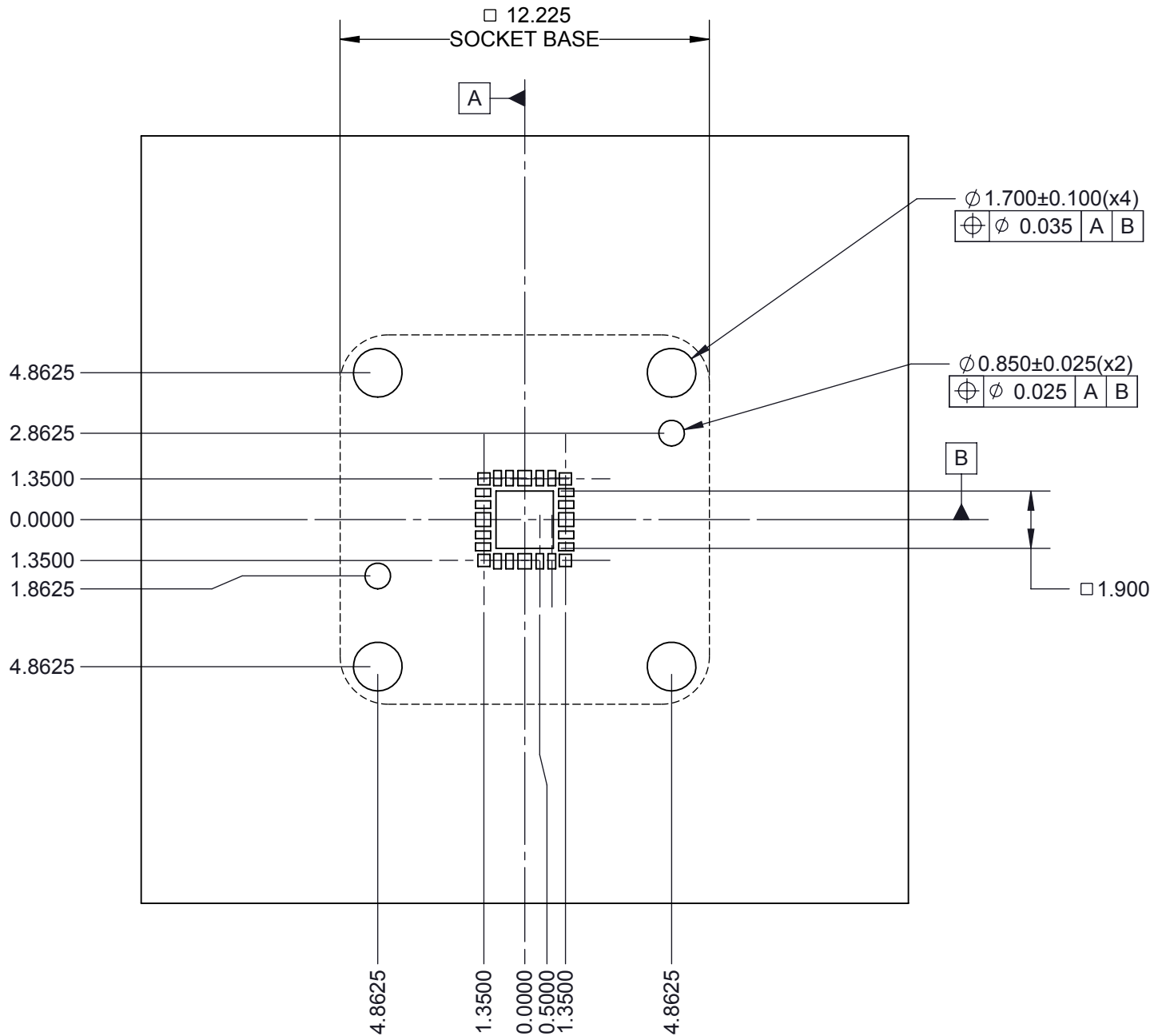


Description: SM-QFN24 Snap Lid Socket

Primary dimension units are millimeters, Secondary dimension units are [inches], Weight is in grams.

Tolerances: Hole diameters $\pm 0.03\text{mm}$ [$\pm 0.001"$], Pitches (from true position) $\pm 0.025\text{mm}$ [$\pm 0.001"$], substrate thickness tolerance $\pm 10\%$, all other tolerances $\pm 0.13\text{mm}$ [$\pm 0.005"$] unless stated otherwise. Materials and specifications are subject to change without notice.


 SM-QFN-9011 Drawing Ironwood Electronics, Inc. Tele: (800) 404-0204 www.ironwoodelectronics.com	Material: N/A Finish: N/A Weight: 10.81	STATUS: Released ENG: B. Fedde FILE: SM-QFN-9011	SHEET: 1 OF 4 DRAWN BY: B. Fedde DATE: 03/27/2013	REV. C SCALE: 2:1

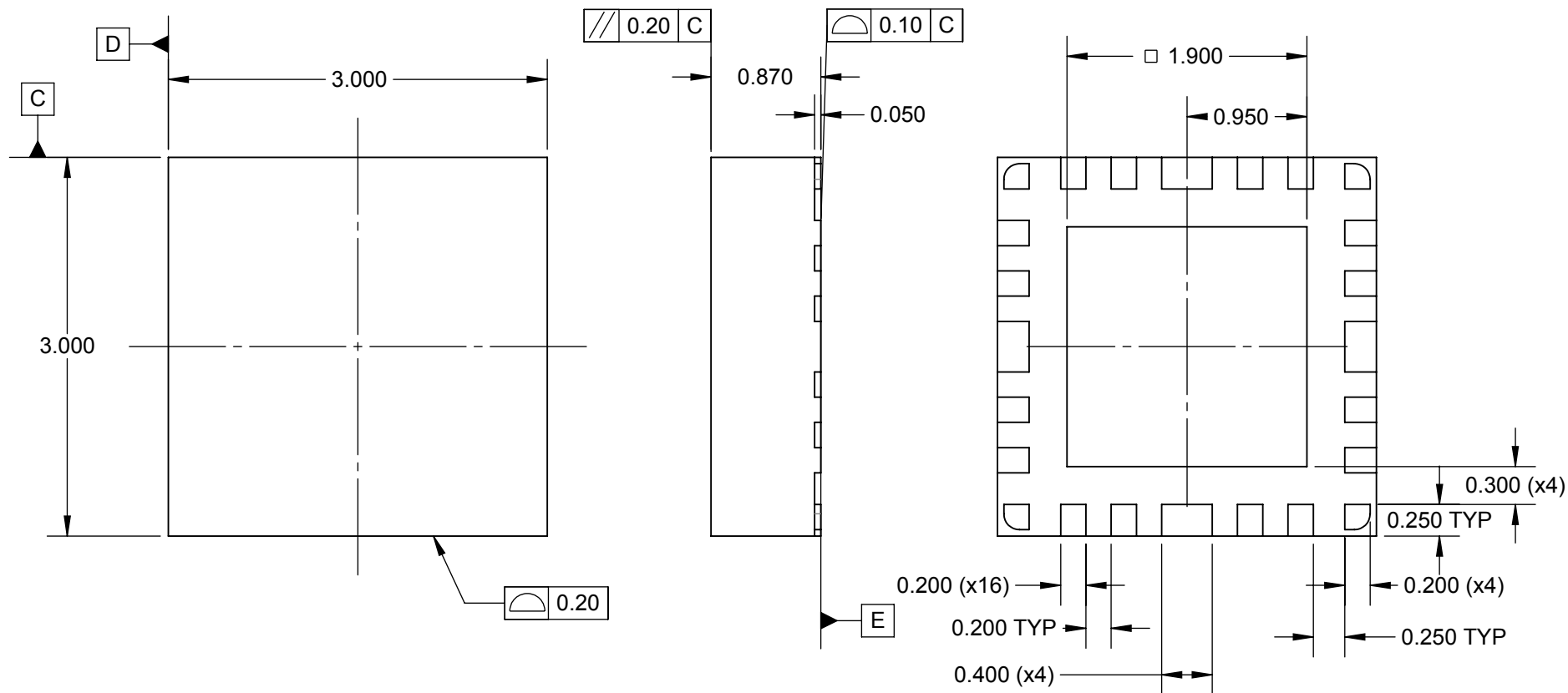


Description: Recommended PCB Layout

Primary dimension units are millimeters, Secondary dimension units are [inches], Weight is in grams.

Tolerances: Hole diameters $\pm 0.03\text{mm}$ [$\pm 0.001''$], Pitches (from true position) $\pm 0.025\text{mm}$ [$\pm 0.001''$], substrate thickness tolerance $\pm 10\%$, all other tolerances $\pm 0.13\text{mm}$ [$\pm 0.005''$] unless stated otherwise. Materials and specifications are subject to change without notice.

 SM-QFN-9011 Drawing Ironwood Electronics, Inc. Tele: (800) 404-0204 www.ironwoodelectronics.com	Material: N/A Finish: N/A Weight: 10.81	STATUS: Released	SHEET: 2 OF 4	REV. C
		ENG: B. Fedde	DRAWN BY: B. Fedde	SCALE: 5:1
		FILE: SM-QFN-9011	DATE: 03/27/2013	




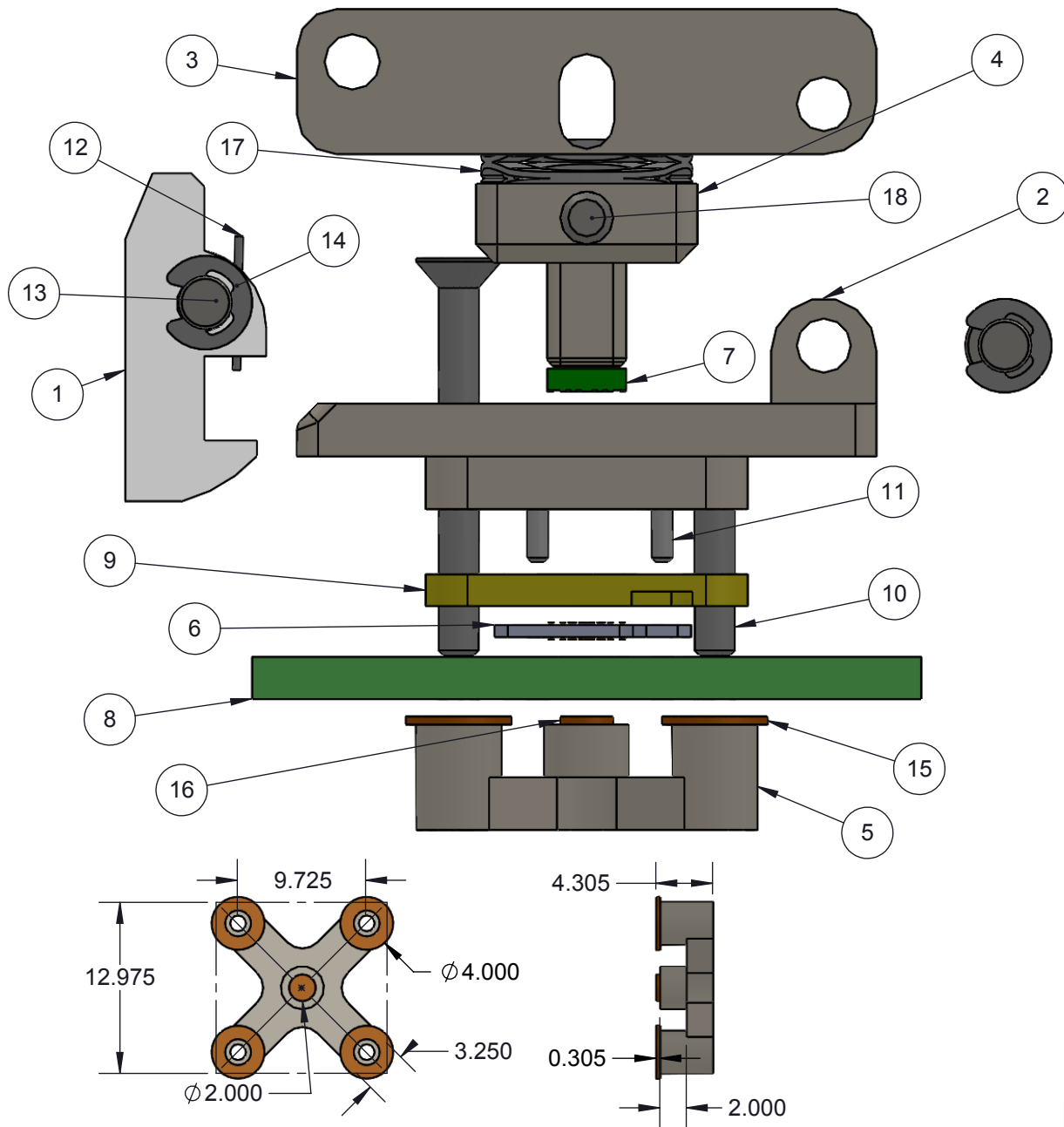
1. Dimensions are in millimeters.
2. Interpret dimensions and tolerances per ASME Y14.5M-1994.
3. Dimension b is measured at the maximum solder ball diameter, parallel to datum plane Z.
4. Datum Z (seating plane) is defined by the spherical crowns of the solder balls.
5. Parallelism measurement shall exclude any effect of mark on top surface of package.

Description: Compatible DUT

Primary dimension units are millimeters, Secondary dimension units are [inches], Weight is in grams.

Tolerances: Hole diameters $\pm 0.03\text{mm}$ [± 0.001 "], Pitches (from true position) $\pm 0.025\text{mm}$ [± 0.001 "], substrate thickness tolerance $\pm 10\%$, all other tolerances $\pm 0.13\text{mm}$ [± 0.005 "] unless stated otherwise. Materials and specifications are subject to change without notice.

 SM-QFN-9011 Drawing Ironwood Electronics, Inc. Tele: (800) 404-0204 www.ironwoodelectronics.com	Material: N/A Finish: N/A Weight: 10.81	STATUS: Released	SHEET: 3 OF 4	REV. C
		ENG: B. Fedde	DRAWN BY: B. Fedde	SCALE: 20:1
		FILE: SM-QFN-9011	DATE: 03/27/2013	




ITEM NO.	DESCRIPTION	Material
1	Clamshell Latch Snap Lid Socket (modified M2695 latch)	PPS/Ultem
2	Snap Lid Socket Base 12.225mm base	7075-T6 Aluminum Alloy
3	Snap Lid M8 bore	7075-T6 Aluminum Alloy
4	Snap Lid Compression Plate 3mm SM IC	7075-T6 Aluminum Alloy
5	X Backing Plate 9.725mm Holes	7075-T6 Aluminum Alloy
6	SM Interposer QFN24	Silmat
7	Test Chip	Material <not specified>
8	Test PCB	FR4 Standard
9	SM IC Guide 3x3mm	Torlon 4203
10	Screw, #0-80 X .375", Flat, SS	
11	Dowel Pin, 1/32" x 3/16", SS	Chrome Stainless Steel
12	Torsion Spring, 180 0.109" OD, Ccw/Rh	Steel Music Wire
13	2mm diameter Hinge Pin, 20 mm long	Alloy Steel
14	Snap ring for 2mm Hinge pin 0.15" OD	
15	Insulating washer, 4mm OD.	Kapton Polyimide/Cirlex
16	Insulating disk, 2mm OD with 2 mil thk Adesive	Kapton Polyimide/Cirlex
17	M8 Wave Fpring FL=2.82, CL=1.78, k=28.85N/mm	Material <not specified>
18	M2x18 SS Dowel Pin	Stainless Steel (18-8)

Description: Socket Assy, Insulation Plate

Primary dimension units are millimeters, Secondary dimension units are [inches], Weight is in grams.

Tolerances: Hole diameters $\pm 0.03\text{mm}$ [$\pm 0.001"$], Pitches (from true position) $\pm 0.025\text{mm}$ [$\pm 0.001"$], substrate thickness tolerance $\pm 10\%$, all other tolerances $\pm 0.13\text{mm}$ [$\pm 0.005"$] unless stated otherwise. Materials and specifications are subject to change without notice.

Rev	Date	Initials	Description
A	-	-	Original
B	8/30/13	MR	replace kapton insulating disk
C	11/11/14	DH/MR	IC Guide Material change

 SM-QFN-9011 Drawing Ironwood Electronics, Inc. Tele: (800) 404-0204 www.ironwoodelectronics.com	Material: N/A Finish: N/A Weight: 10.81	STATUS: Released ENG: B. Fedde FILE: SM-QFN-9011	SHEET: 4 OF 4 DRAWN BY: B. Fedde DATE: 03/27/2013	REV. C SCALE: 4:1
--	---	--	---	----------------------