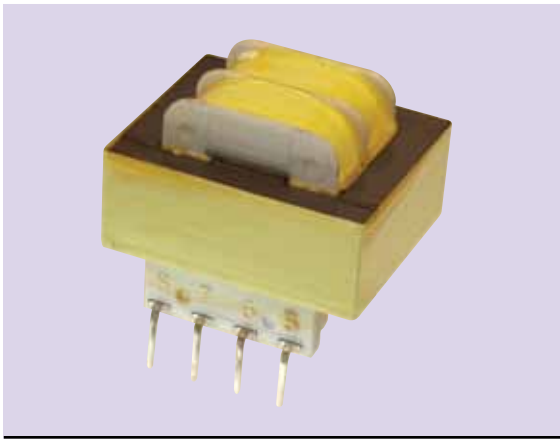




RL-2240

50/60 HZ TRANSFORMERS



DESCRIPTION

- Dual Transformer

ENVIRONMENTAL DATA

- Storage temperature range: -55°C to +130°C
- Operating temperature range: -40°C to +130°C

PACKAGING INFORMATION

- Packaging information: pg. 494

FEATURES & APPLICATIONS

- Advanced design and manufacturing techniques of using split bobbins and nonconcentric winding of the primary and secondary results in low interwinding capacitive coupling and eliminates the need for electrostatic shielding
- Avoids crossover of primary and secondary leads
- Can be used in a wide variety of applications since they can be supplied with single 115 VAC or dual 115/230 VAC primaries for 50/60 Hz operation

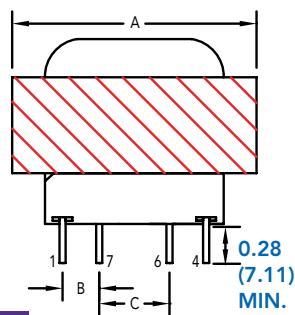
Verify operation with sample in actual circuit. Order samples at www.rencousa.com.

MECHANICAL DIMENSIONS

U.S. Standard (mm)

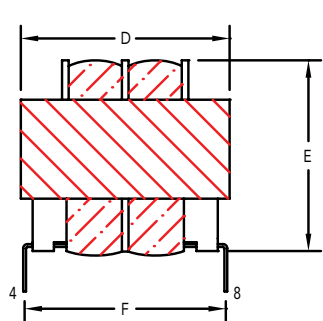
| PART NUMBER | SIZE | VA | A (MAX.) | B (TYP.) | C (TYP.) | D (MAX.) | E (MAX.) | F (TYP.) |
|-------------|------|-----|---------------|--------------|--------------|----------------|----------------|--------------|
| RL-2240 | 2 | 1.1 | 1.375 (34.93) | 0.25 (6.35) | 0.25 (6.35) | 1.1250 (28.58) | 0.9375 (23.81) | 1.20 (30.48) |
| RL-2240 | 3 | 2.4 | 1.375 (34.93) | 0.25 (6.35) | 0.25 (6.35) | 1.1250 (28.58) | 1.1875 (30.16) | 1.20 (30.48) |
| RL-2240 | 4 | 6 | 1.625 (41.28) | 0.25 (6.35) | 0.30 (8.89) | 1.3125 (33.34) | 1.3125 (33.34) | 1.28 (32.51) |
| RL-2240 | 5 | 12 | 1.875 (47.63) | 0.30 (7.62) | 0.40 (10.16) | 1.5625 (39.69) | 1.4375 (36.51) | 1.41 (35.81) |
| RL-2240 | 6 | 20 | 2.250 (57.15) | 0.30 (7.62) | 0.40 (10.16) | 1.8750 (47.63) | 1.4375 (36.51) | 1.60 (40.64) |
| RL-2240 | 7 | 36 | 2.625 (66.68) | 0.40 (10.16) | 0.40 (10.16) | 2.1875 (55.56) | 1.5625 (39.69) | 1.85 (46.99) |

FRONT VIEW



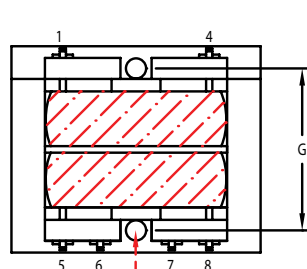
NOTE: WHITE DOT INDICATES PIN #1

SIDE VIEW



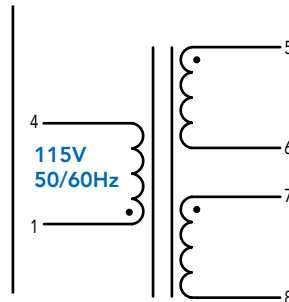
PIN DIMENSION 0.041 (1.04)

BOTTOM VIEW



CLEARANCE HOLE FOR OPTIONAL NYLON MTG. SCREW AND NUT (2PL)

SCHEMATIC



NOTE: PINS 2 AND 3 OMITTED

G (MAX.)

| | |
|----------------|----------------|
| - | - |
| - | 1.3125 (33.34) |
| 1.1250 (28.58) | 1.250 (31.75) |
| 1.3125 (33.34) | 1.500 (38.10) |
| * | * |



RENCO ELECTRONICS INC.

595 International Place, Rockledge, FL 32955-4200 USA • www.rencousa.com • ISO 9001 Certified
Toll Free Engineering Hot Line: 800.645.5828 • P: 321.637.1000 • F: 321.637.1600



RL-2240

| Renco Part Number | SECONDARY RMS RATING | |
|-------------------|----------------------|---------------|
| | Single 115V | 6 Pin |
| RL-2240-2-10 | 10V C.T. @ 0.11 A | 5V @ 0.22 A |
| RL-2240-3-10 | 10V C.T. @ 0.25 A | 5V @ 0.50 A |
| RL-2240-4-10 | 10V C.T. @ 0.60 A | 5V @ 1.20 A |
| RL-2240-5-10 | 10V C.T. @ 1.20 A | 5V @ 2.40 A |
| RL-2240-6-10 | 10V C.T. @ 2.00 A | 5V @ 4.00 A |
| RL-2240-7-10 | 10V C.T. @ 3.60 A | 5V @ 7.20 A |
| RL-2240-2-12 | 12.6V C.T. @ 0.09 A | 6.3V @ 0.18 A |
| RL-2240-3-12 | 12.6V C.T. @ 0.20 A | 6.3V @ 0.40 A |
| RL-2240-4-12 | 12.6V C.T. @ 0.50 A | 6.3V @ 1.00 A |
| RL-2240-5-12 | 12.6V C.T. @ 1.00 A | 6.3V @ 2.00 A |
| RL-2240-6-12 | 12.6V C.T. @ 1.60 A | 6.3V @ 3.20 A |
| RL-2240-7-12 | 12.6V C.T. @ 2.85 A | 6.3V @ 5.70 A |
| RL-2240-2-16 | 16V C.T. @ 0.07 A | 8V @ 0.14 A |
| RL-2240-3-16 | 16V C.T. @ 0.15 A | 8V @ 0.30 A |
| RL-2240-4-16 | 16V C.T. @ 0.40 A | 8V @ 0.80 A |
| RL-2240-5-16 | 16V C.T. @ 0.80 A | 8V @ 1.60 A |
| RL-2240-6-16 | 16V C.T. @ 1.25 A | 8V @ 2.50 A |
| RL-2240-7-16 | 16V C.T. @ 2.25 A | 8V @ 4.50 A |
| RL-2240-2-20 | 20V C.T. @ 0.05 A | 10V @ 0.11 A |
| RL-2240-3-20 | 20V C.T. @ 0.12 A | 10V @ 0.24 A |
| RL-2240-4-20 | 20V C.T. @ 0.30 A | 10V @ 0.60 A |
| RL-2240-5-20 | 20V C.T. @ 0.60 A | 10V @ 1.20 A |
| RL-2240-6-20 | 20V C.T. @ 1.00 A | 10V @ 2.00 A |
| RL-2240-7-20 | 20V C.T. @ 1.80 A | 10V @ 3.60 A |
| RL-2240-2-24 | 24V C.T. @ 0.045 A | 12V @ 0.09 A |
| RL-2240-3-24 | 24V C.T. @ 0.10 A | 12V @ 0.20 A |
| RL-2240-4-24 | 24V C.T. @ 0.25 A | 12V @ 0.50 A |
| RL-2240-5-24 | 24V C.T. @ 0.50 A | 12V @ 1.00 A |
| RL-2240-6-24 | 24V C.T. @ 0.80 A | 12V @ 1.60 A |
| RL-2240-7-24 | 24V C.T. @ 1.50 A | 12V @ 3.00 A |
| RL-2240-2-28 | 28V C.T. @ 0.04 A | 14V @ 0.08 A |
| RL-2240-3-28 | 28V C.T. @ 0.085 A | 14V @ 0.17 A |
| RL-2240-4-28 | 28V C.T. @ 0.20 A | 14V @ 0.40 A |
| RL-2240-5-28 | 28V C.T. @ 0.42 A | 14V @ 0.84 A |
| RL-2240-6-28 | 28V C.T. @ 0.70 A | 14V @ 1.40 A |
| RL-2240-7-28 | 28V C.T. @ 1.30 A | 14V @ 2.60 A |
| RL-2240-2-36 | 36V C.T. @ 0.03 A | 18V @ 0.06 A |
| RL-2240-3-36 | 36V C.T. @ 0.065 A | 18V @ 0.13 A |
| RL-2240-4-36 | 36V C.T. @ 0.17 A | 18V @ 0.34 A |
| RL-2240-5-36 | 36V C.T. @ 0.35 A | 18V @ 0.70 A |
| RL-2240-6-36 | 36V C.T. @ 0.55 A | 18V @ 1.10 A |
| RL-2240-7-36 | 36V C.T. @ 1.00 A | 18V @ 1.00 A |

RL-2240 TABLE CONTINUES ON FOLLOWING PAGE

NOTES:

1. ELECTRICAL SPECIFICATIONS MEASURED AT 25°C



RENCO ELECTRONICS INC.



595 International Place, Rockledge, FL 32955-4200 USA • www.rencousa.com • ISO 9001 Certified
Toll Free Engineering Hot Line: 800.645.5828 • P: 321.637.1000 • F: 321.637.1600

RL-2240

| Renco Part Number Single 115V 6 Pin | SECONDARY RMS RATING | |
|--|----------------------|---------------|
| | Series | Parallel |
| RL-2240-2-48 | 48V C.T. @ 0.023 A | 24V @ 0.046 A |
| RL-2240-3-48 | 48V C.T. @ 0.05 A | 24V @ 0.10 A |
| RL-2240-4-48 | 48V C.T. @ 0.125 A | 24V @ 0.25 A |
| RL-2240-5-48 | 48V C.T. @ 0.25 A | 24V @ 0.50 A |
| RL-2240-6-48 | 48V C.T. @ 0.40 A | 24V @ 0.80 A |
| RL-2240-7-48 | 48V C.T. @ 0.75 A | 24V @ 1.50 A |
| RL-2240-2-56 | 56V C.T. @ 0.02 A | 28V @ 0.042 A |
| RL-2240-3-56 | 56V C.T. @ 0.045 A | 28V @ 0.09 A |
| RL-2240-4-56 | 56V C.T. @ 0.11 A | 28V @ 0.22 A |
| RL-2240-5-56 | 56V C.T. @ 0.22 A | 28V @ 0.44 A |
| RL-2240-6-56 | 56V C.T. @ 0.35 A | 28V @ 0.70 A |
| RL-2240-7-56 | 56V C.T. @ 0.65 A | 28V @ 1.30 A |
| RL-2240-2-120 | 120V C.T. @ 0.01 A | 60V @ 0.02 A |
| RL-2240-3-120 | 120V C.T. @ 0.02 A | 60V @ 0.04 A |
| RL-2240-4-120 | 120V C.T. @ 0.05 A | 60V @ 0.10 A |
| RL-2240-5-120 | 120V C.T. @ 0.10 A | 60V @ 0.20 A |
| RL-2240-6-120 | 120V C.T. @ 0.16 A | 60V @ 0.32 A |
| RL-2240-7-120 | 120V C.T. @ 0.30 A | 60V @ 0.60 A |

NOTES:

1. ELECTRICAL SPECIFICATIONS MEASURED AT 25°C

| PART NUMBER | PART WEIGHT |
|-------------|------------------|
| RL-2240-2 | 68.0g (2.40oz) |
| RL-2240-3 | 107.0g (3.77oz) |
| RL-2240-4 | 174.0g (6.14oz) |
| RL-2240-5 | 291.0g (10.27oz) |
| RL-2240-6 | 367.0g (12.95oz) |
| RL-2240-7 | 514.0g (18.13oz) |

| PART NUMBER | VA | SIZE | OPTIONAL MTG SCREW NUT |
|-------------|----|------|------------------------|
| RL-2240 | 2 | 1.1 | NONE |
| RL-2240 | 3 | 2.4 | NONE |
| RL-2240 | 4 | 6 | 4-40 NYLON |
| RL-2240 | 5 | 12 | 4-40 NYLON |
| RL-2240 | 6 | 20 | 4-40 NYLON |
| RL-2240 | 7 | 36 | * |

* SIZE 7 HAS 4 MOUNTING HOLES ON
2.1875 (55.56) X 1.75 (44.45) CENTERS
FOR A #6 SCREW. NEED NOT BE NYLON.

