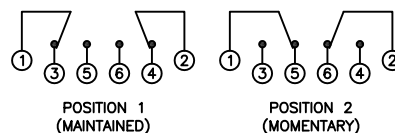


SCHMATIC



SPECIFICATIONS

FUNCTION:  
2P2T ON-(ON)

RATING:  
ANSI/UL 1054 and CAN/CSA C22.2 No.55 (E194579):  
16A 125VAC [cURus]  
12A 250VAC [cURus]  
1HP 125/250VAC [cURus]

CONTACT RESISTANCE:  
Initial: 10mΩ Max.

TEMPERATURE:  
Operating: 0°C to 85°C [cURus]

ELECTRICAL LIFE:  
6,000 Cycles [cURus]

APPROVALS:



COLORS

BODY:  
White

ACTUATOR:  
White

MATERIALS

BODY:  
Polyamide 6/6 (PA66)

ACTUATOR:  
Polyamide 6/6 (PA66)

SPRING:  
Steel (65Mn)

HOOK SPRING:  
Stainless Steel (1Cr13)

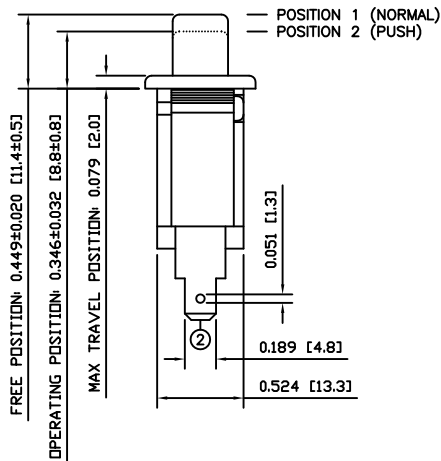
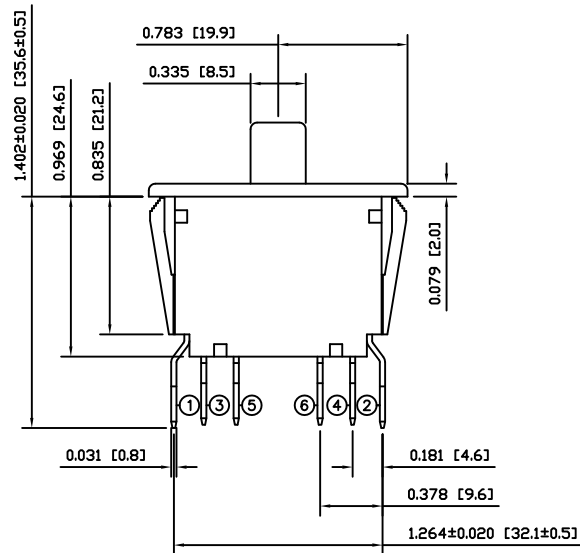
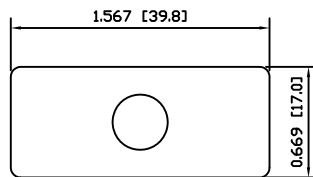
ACTUATION LEVER:  
Brass (H62)

MOBILE CONTACT BAR:  
Silver Plated Copper

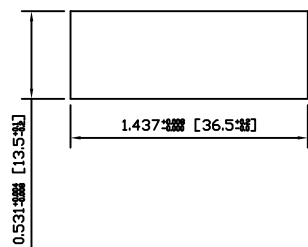
MOBILE CONTACT:  
Silver/Nickel (AgNi(10))

STATIONARY CONTACT:  
Silver/Nickel Clad Copper (AgNi(10)/Cu)

TERMINALS:  
Silver Plated Brass (H62)



SUGGESTED PANEL CUTOUT



ACTUATOR	A	10/07/08	CAB
BODY	B	10/07/20	CAB
COLORS	A	08/10/26	CAB
MATERIALS	B	10/07/21	CAB
SPECIFICATIONS	C	10/07/19	CAB
REFERENCE	REV.	DATE	BY

THE INFORMATION CONTAINED IN THIS DOCUMENT IS PROPRIETARY TO E-SWITCH AND IS NOT TO BE COPIED OR TRANSFERRED

A	INITIAL RELEASE	19270	10/08/25	CAB
REV.	DESCRIPTION	PCR	DATE	DRAWN BY

DIMENSIONS	INCHES [MILLIMETERS]
GENERAL TOLERANCES	±0.008 [±0.2] / ±1°
SCALE	DRAWING NOT TO SCALE

PP2-1H7-2D2		
ITEM NUMBER	DATE	REVISION
34-PP21H72D2	AUGUST 25, 2010	A