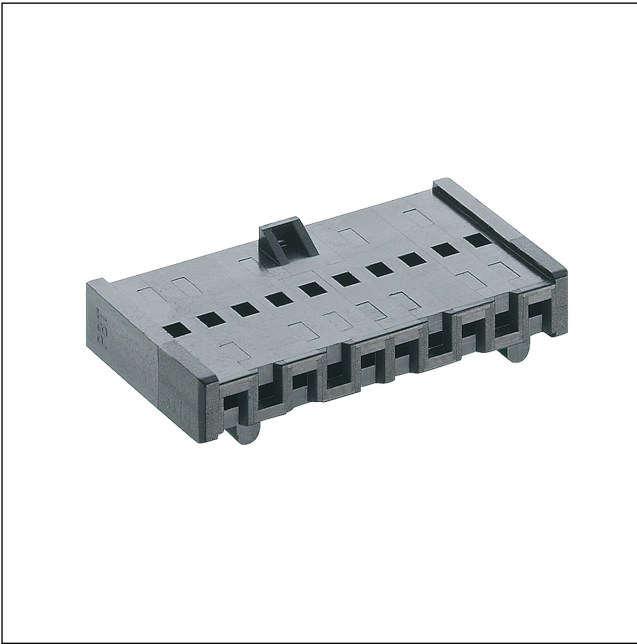


31

3114

Minimodul™ connectors, pitch 2.5 mm



Empty Minimodul™ housing for reception of crimp contacts, for indirect mating

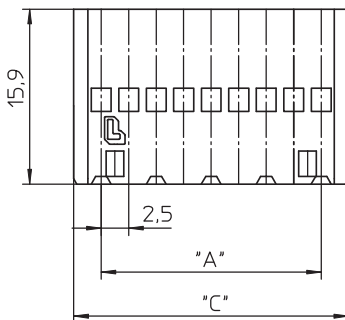
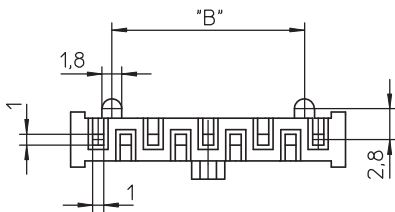
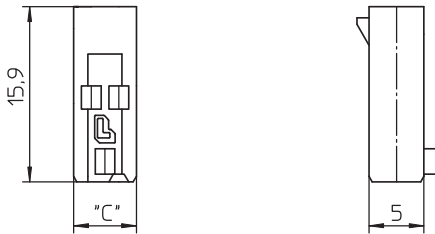
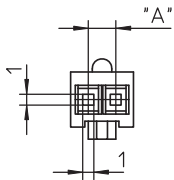
State: Active

Approvals:



31

3114



Environmental conditions

Temperature range -25 °C/+100 °C

Materials

Insulating body PBT, V-0 according to UL94

Mechanical data

Further data see suitable crimp contact

Electrical data (at T_{amb} 20 °C)

Rated current 5,0 A (T_v 30 °C)
2,5 A (T_v 70 °C)

Rated voltage 125 V AC (jede Kammer bestückt)
250 V AC (jede zweite Kammer bestückt)

Material group IIIa (CTI ≥ 250)¹

Creepage distance ≥ 1,5 mm (every chamber equipped)
≥ 4,0 mm (every second chamber equipped)

Clearance ≥ 1,5 mm (every chamber equipped)
≥ 4,0 mm (every second chamber equipped)

Insulation resistance > 1 GΩ

Further data see suitable crimp contact

¹ see suitable crimp contact

Associated products

Counterparts			
☞ 2,5 MS	☞ 2,5 MSF	☞ 2,5 MSF/O	
☞ 2,5 MSFQ	☞ 2,5 MSFQ/O	☞ 2,5 MSFW	
☞ 2,5 MSFW/O	☞ 2,5 MSFWQ	☞ 2,5 MSFWQ/O	

Accessories			
☞ 3111 01 G	☞ 3111 01 G	☞ 3111 01 G	
☞ 3111 01 L	☞ 3111 01 L	☞ 3111 01 L	
☞ 3111 03 G	☞ 3111 03 G	☞ 3111 03 G	
☞ 3111 03 L	☞ 3111 03 L	☞ 3111 03 L	

Designation	Pole Number	PU (Pieces)	MDQ (Pieces)	Dimensions		
				A (mm)	B (mm)	C (mm)
3114 02	2	250	2000	2.5	-	5.7
3114 03	3	250	2000	5.0	2.5	10.0
3114 04	4	250	2000	7.5	5.0	12.5
3114 05	5	250	2000	10.0	7.5	15.0
3114 06	6	250	2000	12.5	10.0	17.5
3114 07	7	250	2000	15.0	12.5	20.0
3114 08	8	250	2000	17.5	15.0	22.5
3114 09	9	250	2000	20.0	17.5	25.0
3114 10	10	250	2000	22.5	20.0	27.5
3114 11	11	250	2000	25.0	22.5	30.0
3114 12	12	250	2000	27.5	25.0	32.5
3114 13	13	250	2000	30.0	27.5	35.0
3114 14	14	250	2000	32.5	30.0	37.5
3114 15	15	250	2000	35.0	32.5	40.0
3114 16	16	250	2000	37.5	35.0	42.5
3114 17	17	250	2000	40.0	37.5	45.0
3114 18	18	250	2000	42.5	40.0	47.5
3114 19	19	250	2000	45.0	42.5	50.0
3114 20	20	250	2000	47.5	45.0	52.5
3114 02 VP15	2	2500	2500	2.5	-	5.7
3114 03 VP15	3	2500	2500	5.0	2.5	10.0
3114 04 VP15	4	2500	2500	7.5	5.0	12.5
3114 05 VP15	5	2500	2500	10.0	7.5	15.0
3114 06 VP15	6	2500	2500	12.5	10.0	17.5
3114 07 VP15	7	2500	2500	15.0	12.5	20.0
3114 08 VP15	8	2500	2500	17.5	15.0	22.5
3114 09 VP15	9	2500	2500	20.0	17.5	25.0
3114 10 VP15	10	2500	2500	22.5	20.0	27.5
3114 11 VP15	11	1000	2000	25.0	22.5	30.0
3114 12 VP15	12	1000	2000	27.5	25.0	32.5

Packaging:

in bulk, in a cardboard box