

45-LCCE Series



UL **FC** **CE** **IP67**

FEATURES:

- AC Input 100 ~ 277 Vac
- Built-in Active Power Factor Correction
- Protection: SCP / OVP / OTP
- High Operating Ambient Temp.: -20 °C ~ +60 °C
- Surge Protection : L-N 1KV, L-FG/N-FG 2KV
- Safety: UL 60950-1
- EMI: CE / FCC
- Comply with Indoor/Outdoor Waterproof (IP 67)
- Warranty: 5 years (refer to LinkCom warranty policy)
- RoHS Compliant

PRODUCT SPECIFICATION

MODEL	DC OUTPUT POWER (W)	DC OUTPUT VOLTAGE (V)	OUTPUT CURRENT (A)	OUTPUT CURRENT TOLERANCE	EFFICIENCY (Typ.)				Power Factor (Typ.)			
					100VAC	120VAC	200VAC	277VAC	100VAC	120VAC	200VAC	277VAC
LCCE-045U951	45.6	36-48	0.95	±5%	88.0%	89.0%	88.0%	87.0%	0.98	0.98	0.95	0.84
LCCE-045U112	46.2	32-42	1.1	±5%	88.0%	89.0%	88.0%	87.0%	0.98	0.98	0.95	0.85
LCCE-045U132	46.8	27-36	1.3	±5%	88.0%	89.0%	88.0%	87.0%	0.98	0.98	0.95	0.89
LCCE-045U152	45	23-30	1.5	±5%	87.0%	88.0%	88.0%	87.0%	0.98	0.98	0.95	0.9
LCCE-045U192	45.6	18-24	1.9	±5%	87.0%	88.0%	88.0%	87.0%	0.98	0.98	0.95	0.91
LCCE-045U232	46	15-20	2.3	±5%	85.0%	86.0%	86.0%	85.0%	0.98	0.98	0.95	0.92
LCCE-045U302	45	11.2-15	3	±5%	83.0%	83.0%	84.0%	82.0%	0.98	0.98	0.92	0.83
LCCE-052U132	52.5	31.5-42	1.25	±5%	87.0%	88.0%	88.0%	87.0%	0.98	0.98	0.95	0.9

Input Specifications

	Min.	Typ.	Max.	Units	Conditions/Description
Input Voltage Range	90		305	Vac	
Input Frequency Range	47		63	Hz	
Input Current		0.7		A	100VAC in
Inrush Current			43	A	230VAC in, 25°C Cold start
Leakage Current			0.75	mA	264VAC in
Power Factor (PF)	0.9				100-230VAC, 100% load
Total Harmonics Distortion (THD)		N/A		%	

Output Specifications

	Min.	Typ.	Max.	Units	Conditions/Description
Line Regulation		±5		%	
Load Regulation		±5		%	
Output Current Regulation	-5	±2.5	5	%	
Ripple and Noise (pk-pk)			4.5	V	20MHz Bandwidth. See note (3)
Ripple Current					N/A
Turn-on Delay Time			3	s	*Measured at 110/230VAC and at full load

Protection Functions

	Min.	Typ.	Max.	Units	Conditions/Description
Short Circuit Protection					Auto recovery
Over Voltage Protection					Auto recovery
Over Temp Protection (Tc)					Auto recovery

Environmental Conditions

	Min.	Typ.	Max.	Units	Conditions/Description
Operating Temperature (Ta)	-20		60	°C	Non-condensing
Operating Humidity	10		90	%RH	Non-condensing
Operating Case Temperature (Tc)				°C	N/A
Storage Temperature	-40		80	°C	Non-condensing
Storage Humidity	10		95	%RH	Non-condensing
Life Time		N/A			
Dimensions(L*W*H)	163 * 47 * 31.6 mm [6.42 * 1.85 * 1.24 inch]				
Weight		403		g	

45-LCCE Series

Constant Current Mode

EMC Compliance and Safety			
EMC Compliance			
Conducted and Radiated Emission	EN 55015 (CISPR15) , FCC part 15 Class B		
Harmonic Current Emissions	EN 61000-3-2 Class C		
Voltage Fluctuations & Flicker	EN 61000-3-3		
EMS Standards	Electrostatic Discharge (ESD)	IEC 61000-4-2	8 KV air discharge, 4 KV contact discharge
	RF Electromagnetic Field Susceptibility	IEC 61000-4-3	
	Electrical Fast Transient	IEC 61000-4-4	
	Surge Immunity	IEC 61000-4-5	L-N 1KV, L-FG/N-FG 2KV
	Conducted RF Disturbances	IEC 61000-4-6	
	Power Frequency Magnetic Field	IEC 61000-4-8	
	Voltage Dips	IEC 61000-4-11	
Safety			
UL	UL 60950-1		
PSE	Comply with PSE		

Notes

- (1) All parameters not specially mentioned are measured 230VAC input.
- (2) All specifications Typical @25°C , unless otherwise noted, at normal line and load.
- (3) Ripple and Noise measured directly at pins/terminals at nom. load, 0.1uF bypass and 47uF electrolytic, pk-pk @20MHz bandwidth.
- (4) Specified for free-air convection cooling.

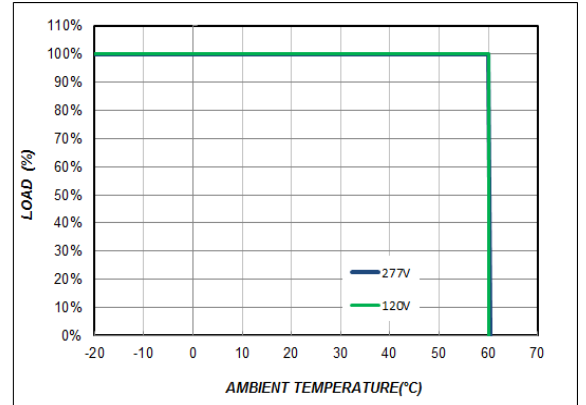
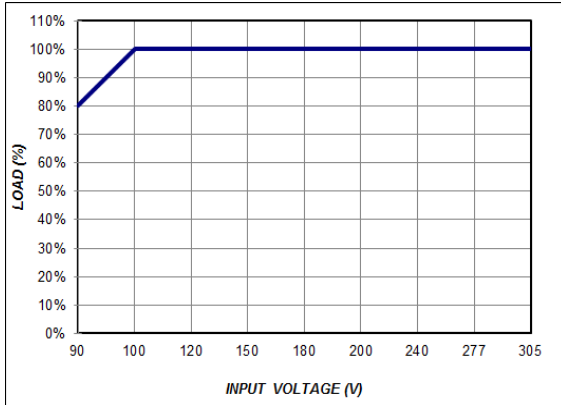
* REFERENCE: www.linkcom.com.tw

* Please contact sales@linkcom.com.tw, sales@linkcomusa.com for more information

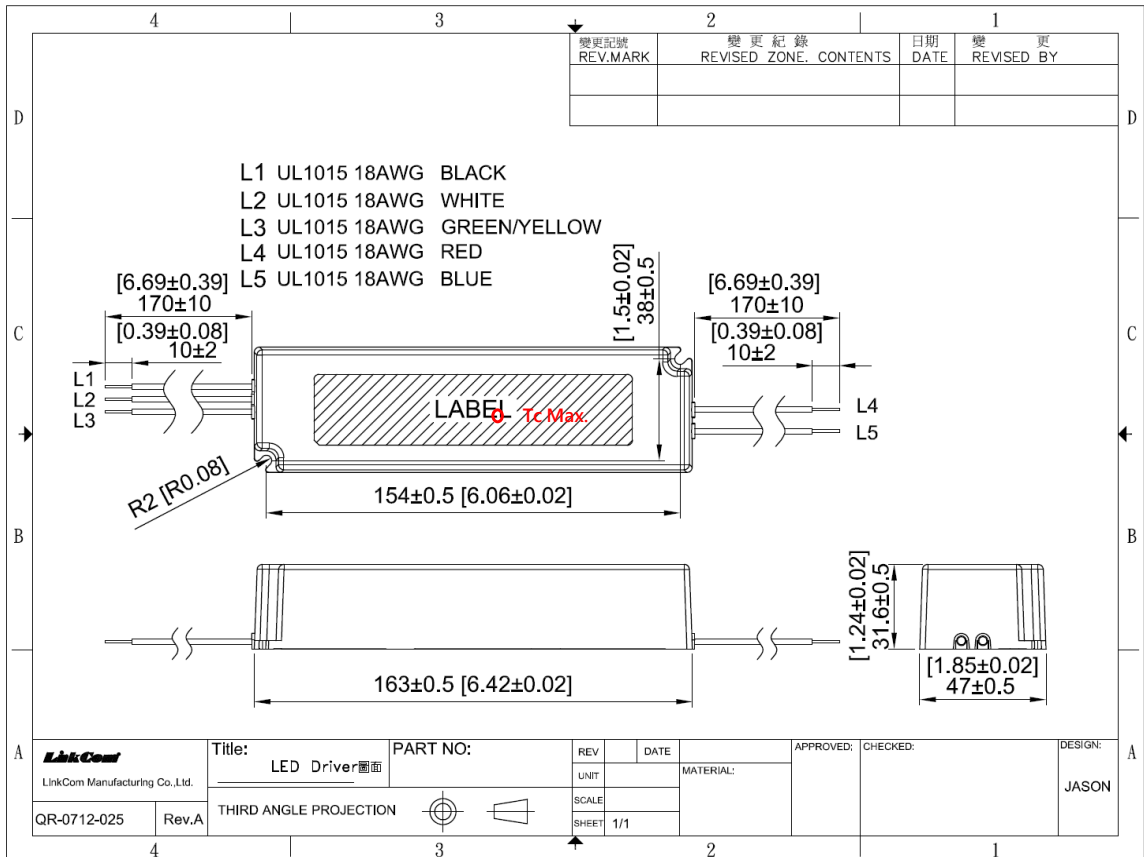
45-LCCE Series

Constant Current Mode

DERATING CURVE



DIMENSIONS

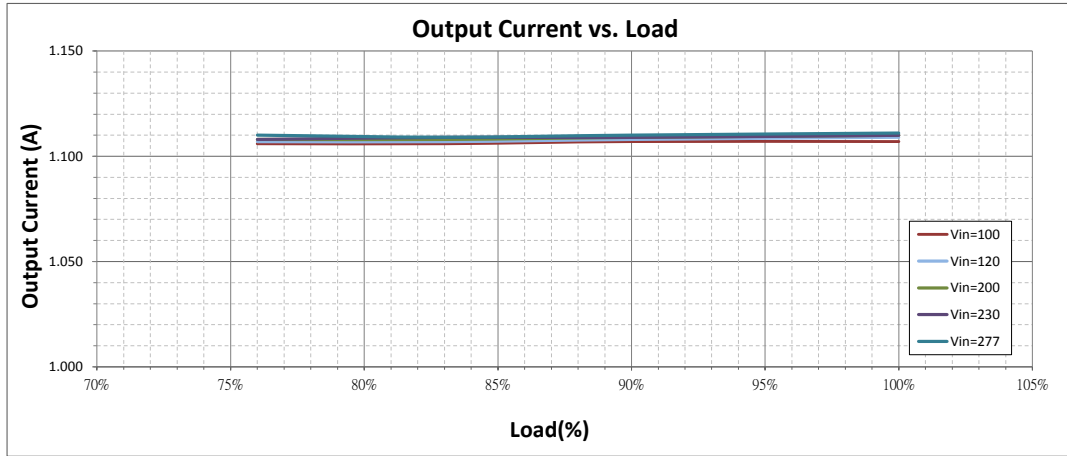


* REFERENCE: www.linkcom.com.tw

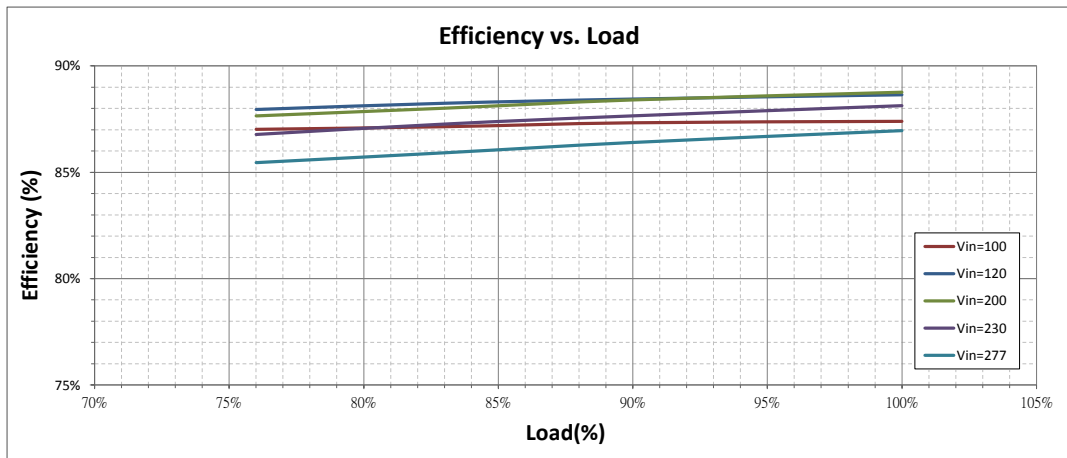
45-LCCE Series

Constant Current Mode

Output Current vs. Load (LCCE-045U112)



Efficiency vs. Load (LCCE-045U112)



PF vs. Load (LCCE-045U112)

