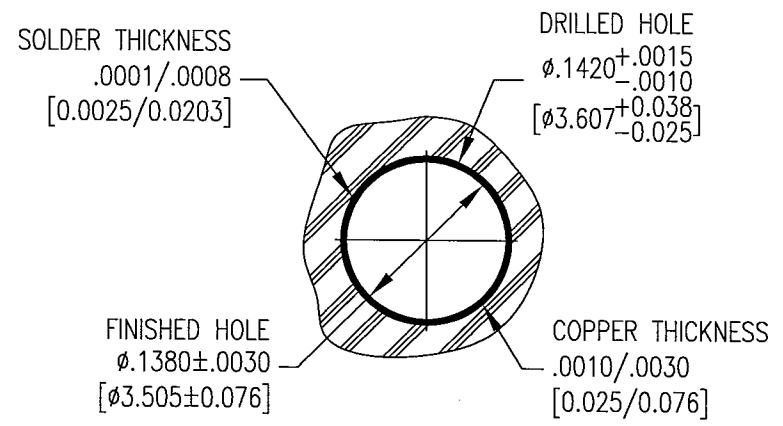
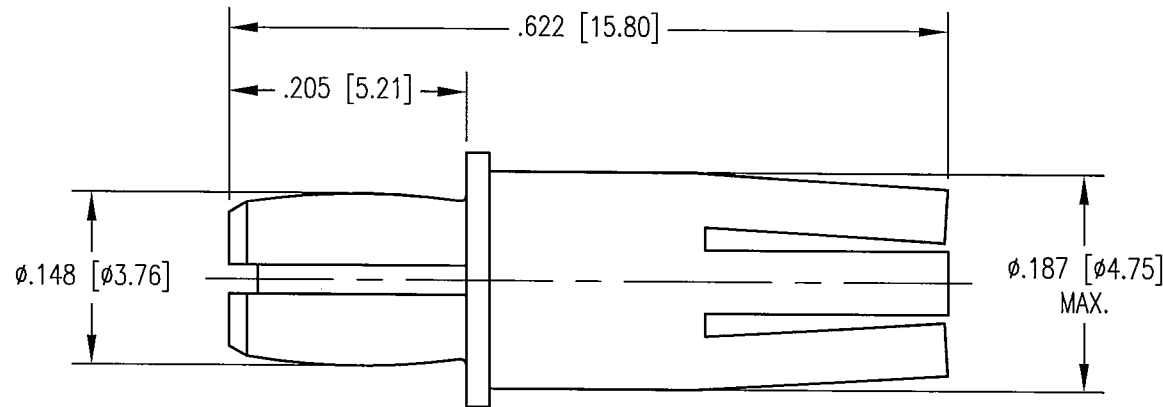


REV	DESCRIPTION	BY DATE	APPD
C	ECR 7139	JWH 10/24/01	JEM



PLATED THRU HOLE REQUIREMENTS

NOTES:

- MATERIALS:  
BODY: PHOSPHOR BRONZE PER ASTM B139  
INSERT: SILICONE RUBBER PER ZZ-R-765
- FINISH:  
BODY: .000050 MIN. GOLD PER MIL-G-45204 OVER  
.000050 MIN. NICKEL PER QQ-N-290
- PERFORMANCE CHARACTERISTICS:  
CONTACT TO PCB:  
MAX. INSERTION FORCE: 75 LBS./334 N  
MIN. RETENTION FORCE: 20 LBS./89 N
- INSTALLATION TOOL NO. 107-43847-001 REQUIRED FOR ASSEMBLY OF THIS CONTACT TO P.C. BOARD. (SEE DWG. NO. 43847)
- THIS CONTACT MAY BE USED IN WINCHESTER SERIES 6163 DIN STYLE M C-PRESS SOCKET CONNECTOR. (SEE DWG. NO. 27936)

PER ASME Y14.5M-1994 UNLESS OTHERWISE SPECIFIED: DIMENSIONS ARE IN INCHES [MM]				<b>Litton</b>	
TOLERANCES: DECIMALS .XX ± .01/0.254 .XXX ± .005/0.127 ANGLES ± 2°				Winchester/Retconn 400 Park Road Watertown, Connecticut 06795	
SCALE: 6:1		TITLE		DIN HIGH POWER RECEPTACLE 40 AMP, PRESS-FIT	
<b>CUSTOMER DRAWING</b>		APPROVED DATE		APPROVED DATE	
DRAWN DATE		CHECKED DATE		APPROVED DATE	
JWH 10/25/01		MJF 10/25/01		JEM 10/25/01	
APPROVED DATE		APPROVED DATE		APPROVED DATE	
JEM 10/25/01		KJT 10/25/01		KJT 10/25/01	
A				321-000-0060A	
SHT.				OF	
1				1	
REV.				C	