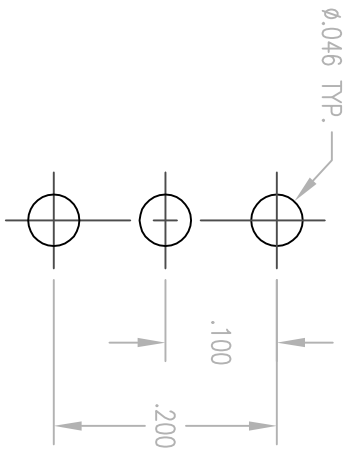
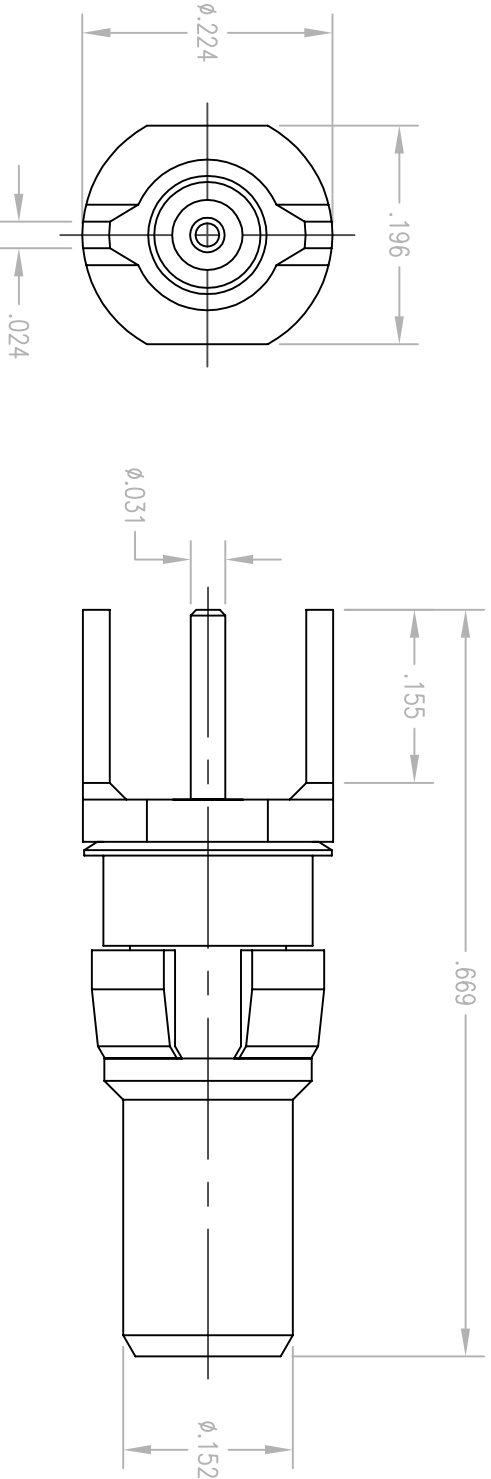


REV.	DESCRIPTION	DATE	BY	APPD.
C	NPR 2579	9/21/01	JMH	



RECOMMENDED MOUNTING HOLE

- NOTES:
1. MATERIALS:
 BODY: BRASS PER ASTM B16
 CONTACT: COPPER ALLOY
 INSULATOR: TEFLON PER ASTM D1710
 CLIP RING AND SPRING WASHER: PHOSPHOR BRONZE PER ASTM B103
 2. FINISH:
 BODY AND CONTACT: .000030 MIN. GOLD PER MIL-G-45204 OVER
 .000050 MIN. NICKEL PER QQ-N-290
 CLIP RING: .000100 MIN. NICKEL PER QQ-N-290 OVER
 COPPER FLASH
 SPRING WASHER: .000005 MIN. GOLD PER MIL-G-45204 OVER
 .000050 MIN. NICKEL PER QQ-N-290

PER ASME Y14.5M-1994 UNLESS OTHERWISE SPECIFIED: TOLERANCES ARE IN INCHES (MM) DECIMALS .XX ± .01/0.254 FRACTIONS .XXX ± .005/0.127 ANGLES ± Z°		SCALE: 6:1	
CUSTOMER DRAWING		TITLE	
DRAWN: JMH DATE: 9/21/01 APPROVED:		CHECKED:	
DATE:		DATE:	
APPROVED:		APPROVED:	
A		A	
200-010-6140G		RDM STRAIGHT PLUG	
SHT. 1 OF 1		REV. C	
Litton Winchester/Reticon 400 Post Road Westford, Connecticut 06096		RDM STRAIGHT PLUG	