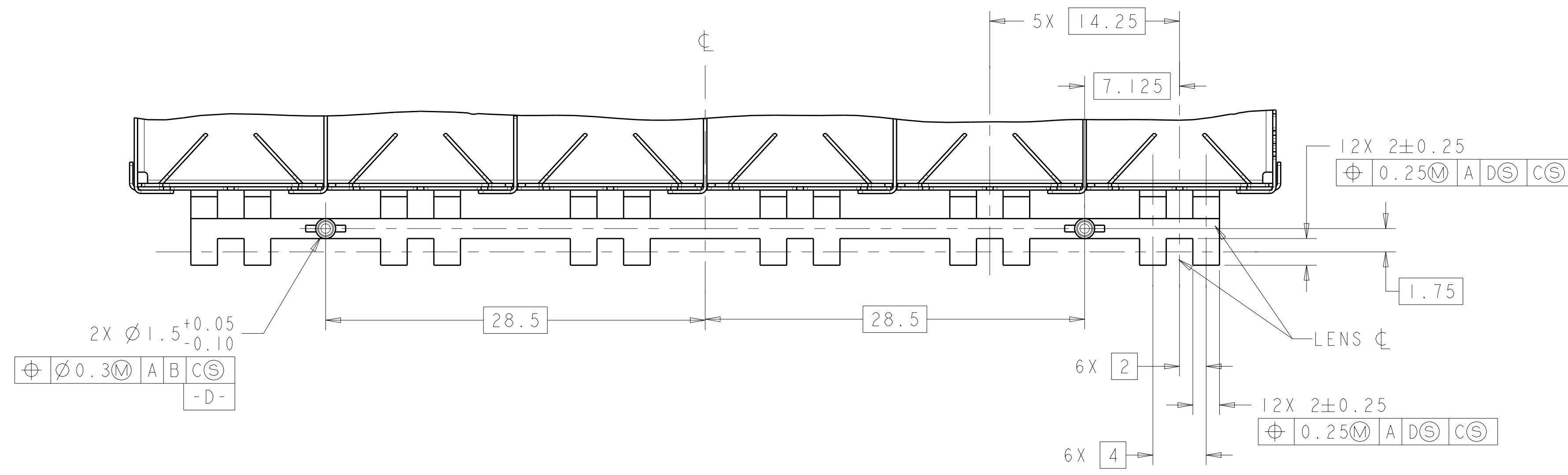
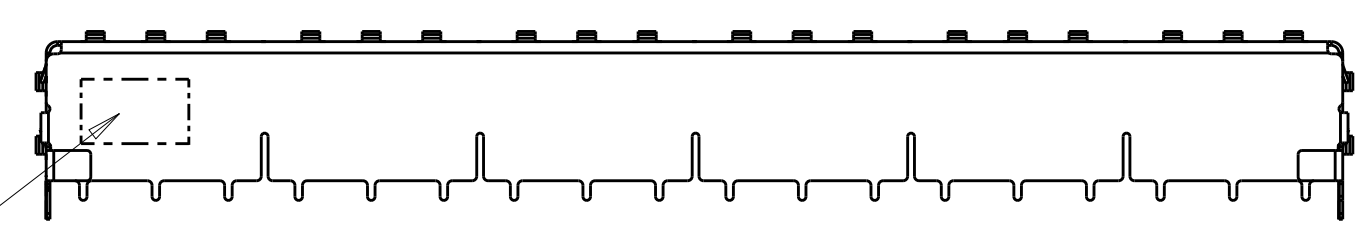
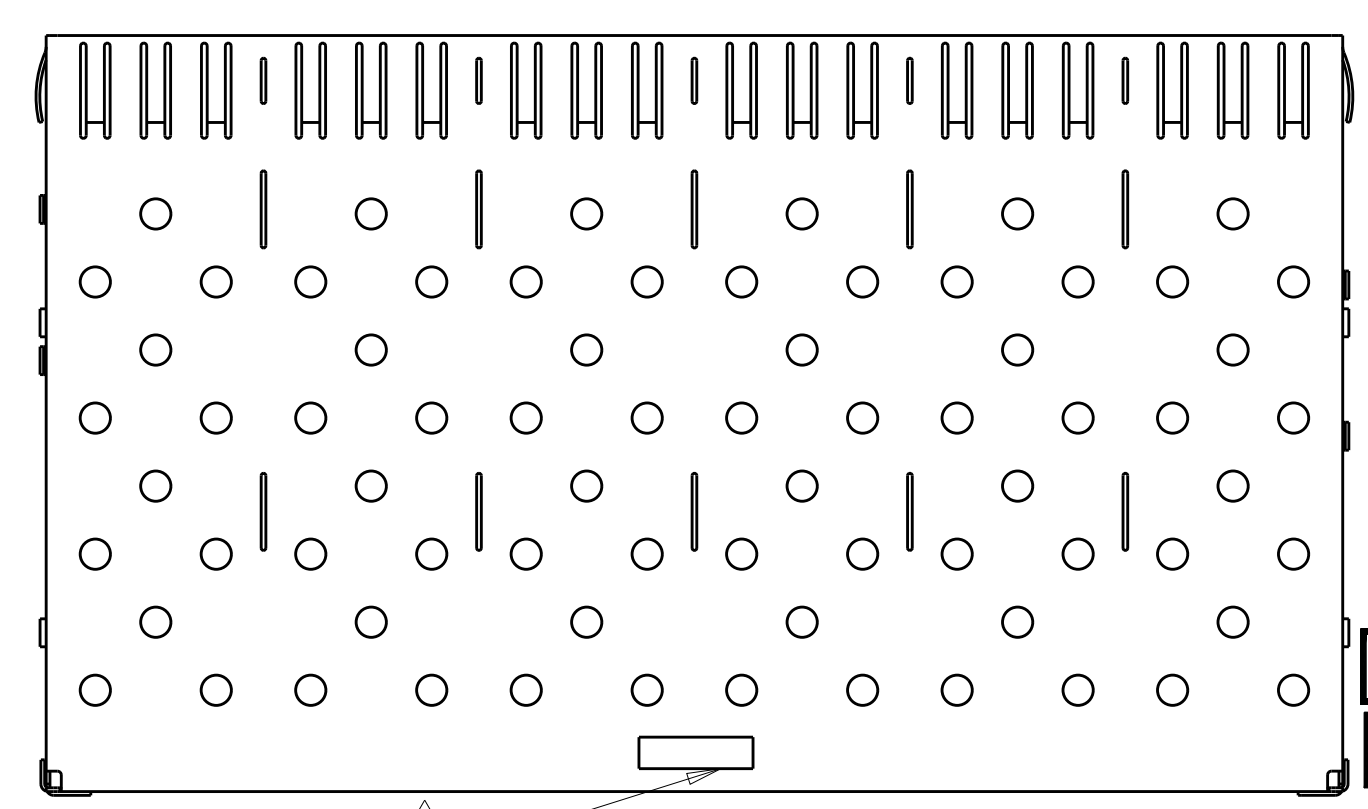
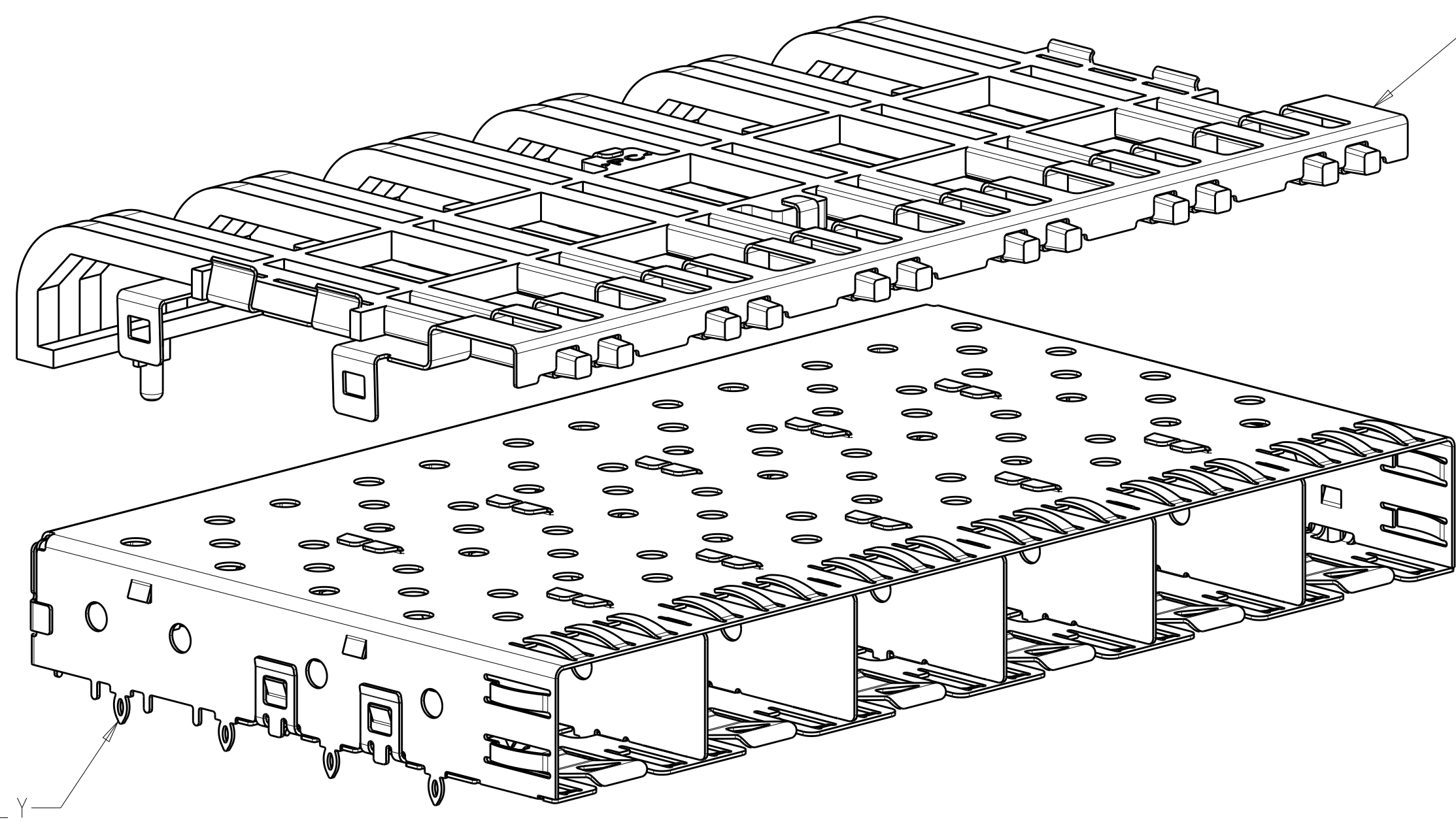
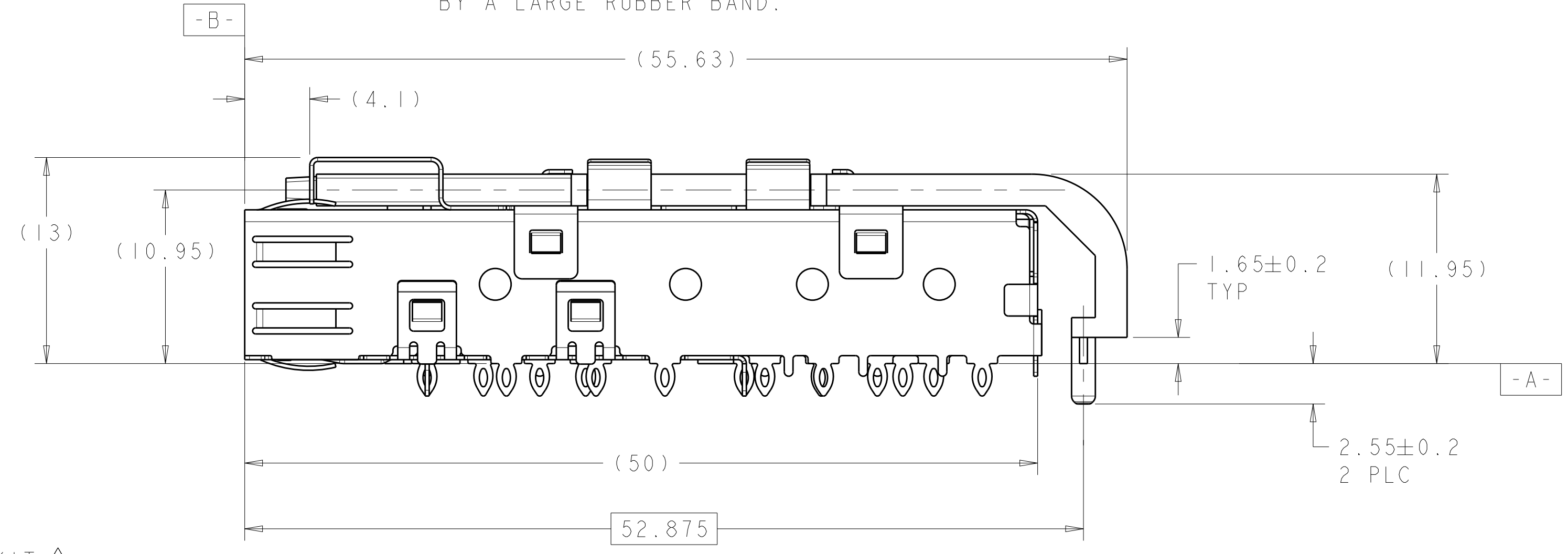
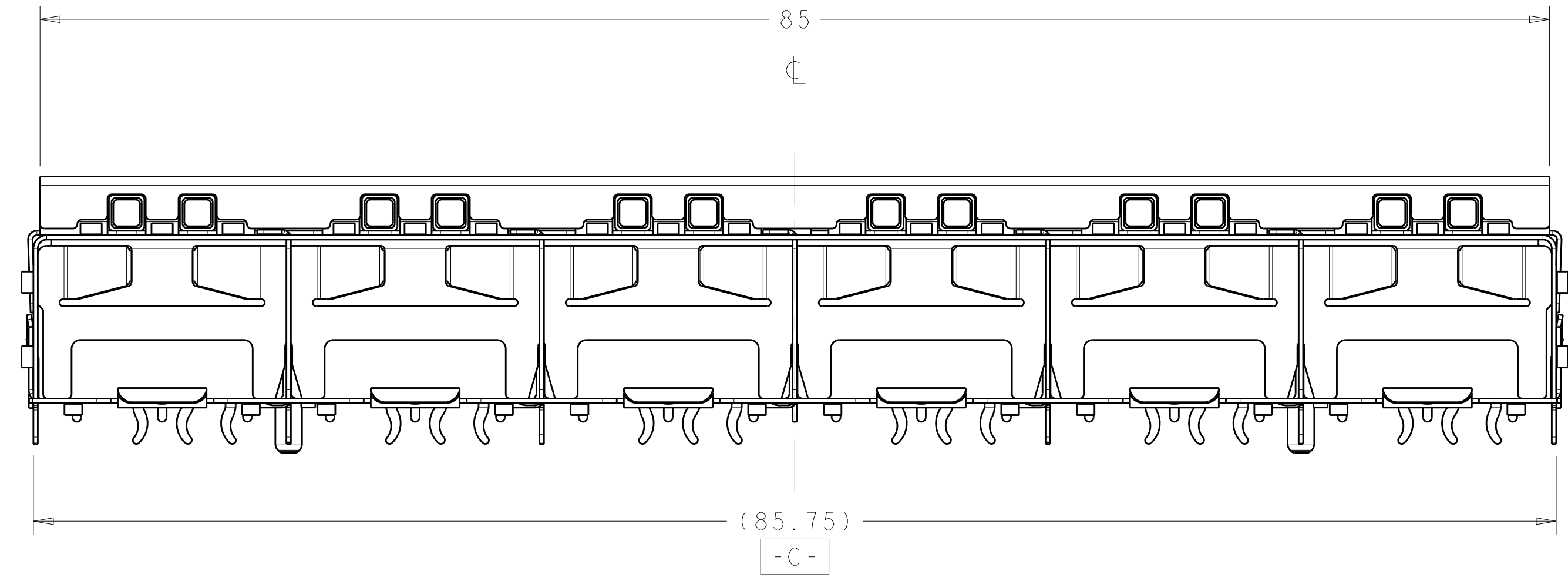


LOC	DIST	REVISIONS					
GP	00	P	LTN	DESCRIPTION	DATE	DWN	APVD
		E1		REVISED PER ECO-11-007052	06APR2011	JY	CW
		F		REVISED PER ECO-14-000886	20FEB2014	JW	SH
		F1		REVISED PER ECO-14-010419	11JUL2014	JW	SH
		G		REVISED PER ECO-15-013594	22SEP2015	JW	SH



- △ PADS AND VIAS CHASSIS GROUND
- △ DATUM AND BASIC DIMENSIONS ESTABLISHED BY CUSTOMER.
- △ LIGHT PIPE KIT WHICH IS SEPARATE FROM CAGE ASSEMBLY, KIT TO BE ATTACHED AFTER SEATING OF 1761015-1 ON PC BOARD.
- △ DATE CODE AND PART NUMBER IN APPROXIMATE AREA SHOWN LABEL ON CAGE ASSEMBLY WILL HAVE PART NUMBER 1761015-1 OR -3.
- 5. REFERENCE STYLE 1 ON APPLICATION SPECIFICATION 114-13165 FOR ADDITIONAL INFORMATION ON CAGE ASSEMBLIES WITH LIGHT PIPES.
- △ REFERENCE APPLICATION SPEC 114-13120, HOLE A, FOR RECOMMENDED DRILL HOLES DIAMETER AND PLATING THICKNESSES.
- △ REFERENCE APPLICATION SPEC 114-13120, HOLE B, FOR RECOMMENDED DRILL HOLES DIAMETER AND PLATING THICKNESSES.
- △ PATTERN REPEATS FOR EACH PORT. SPACING BETWEEN PORTS IS 14.25mm.
- △ MINIMUM PC BOARD THICKNESS = 1.50mm.
- △ COMPANY LOGO IN APPROXIMATE AREA SHOWN
- △ BOX WILL CONTAIN TRAYS OF CAGES AND TRAYS OF LIGHT PIPE ASSEMBLIES.
- △ BOX WILL CONTAIN TRAYS OF CAGES AND TRAYS OF LIGHT PIPE ASSEMBLIES. ONE TRAY OF CAGE AND ONE TRAY OF LIGHT PIPE ASSEMBLIES WILL BE HELD BY A LARGE RUBBER BAND.



**SUPERSEDED BY:**  
1658939-4

**SUPERSEDED BY:**  
1658939-3

1761013-3	1751015-3	△	1X6 ASSEMBLY	1658939-4
1761013-3	1751015-3	△	1X6 ASSEMBLY	1658939-3
1761013-1	1751015-1	△	1X6 ASSEMBLY	1658939-2
1761013-1	1751015-1	△	1X6 ASSEMBLY	1658939-1
LIGHT PIPE KIT	CAGE ASSEMBLY	PACKAGE	POSITION	PART NUMBER

THIS DRAWING IS A CONTROLLED DOCUMENT.

DIMENSIONS: mm

TOLERANCES UNLESS OTHERWISE SPECIFIED:

0 PLC	±0.1
1 PLC	±0.1
2 PLC	±0.10
3 PLC	±0.100
4 PLC	±0.100
ANGLES	±0.1°
FINISH	±0.1

MATERIAL: -

Customer Drawing

DWN: M.E. CONNER 21NOV2003  
CHK: M.J. PHILLIPS 21NOV2003  
APVD: M.J. PHILLIPS 21NOV2003

PRODUCT SPEC: 108-1950  
APPLICATION SPEC: 114-13120

NAME: SFP  
1X6 CAGE ASSEMBLY WITH LIGHT PIPE

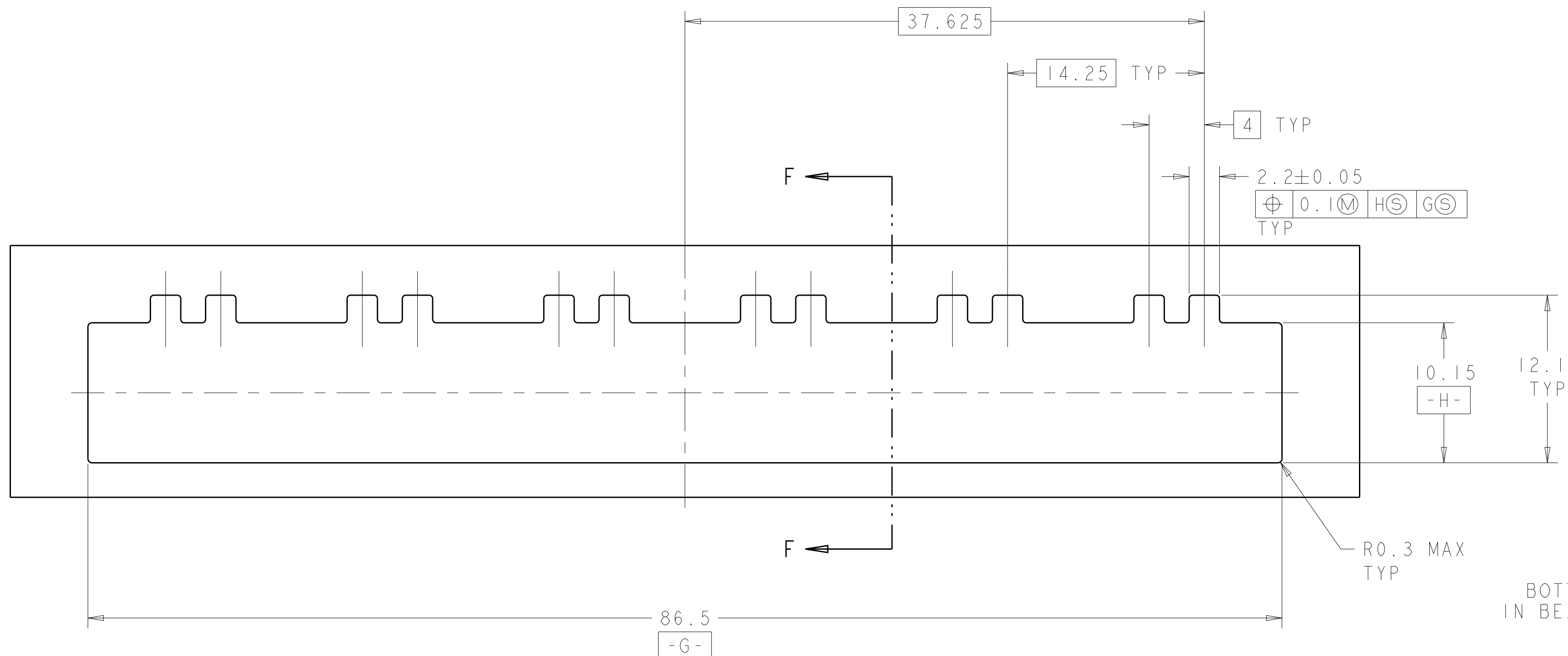
SIZE: A1  
CAGE CODE: 100779  
DRAWING NO: 1658939

RESTRICTED TO: -

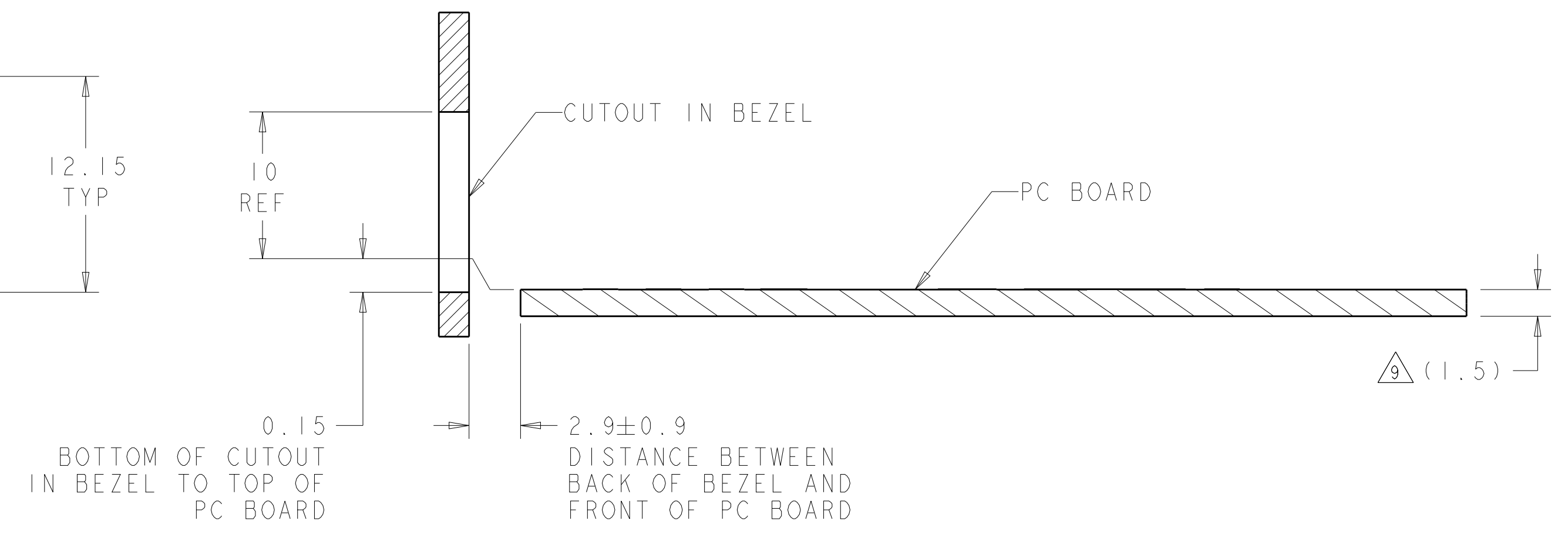
SCALE: 4:1  
SHEET: 1 OF 3  
REV: G

1658939-1, -2, -3, -4  
SCALE 3:1

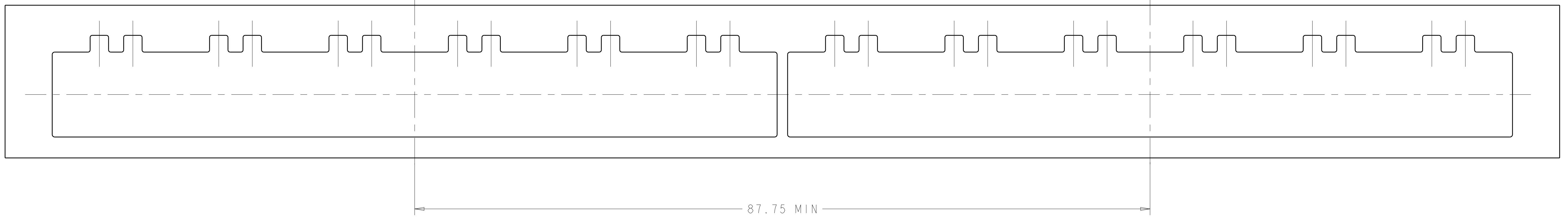
LOC		DIST		REVISIONS			
P	LTN	DESCRIPTION	DATE	DMN	APVD		
-	-	SEE SHEET 1	-	-	-		



RECOMMENDED BEZEL CUTOUT



SECTION F-F  
 RECOMMENDED BEZEL CONFIGURATION

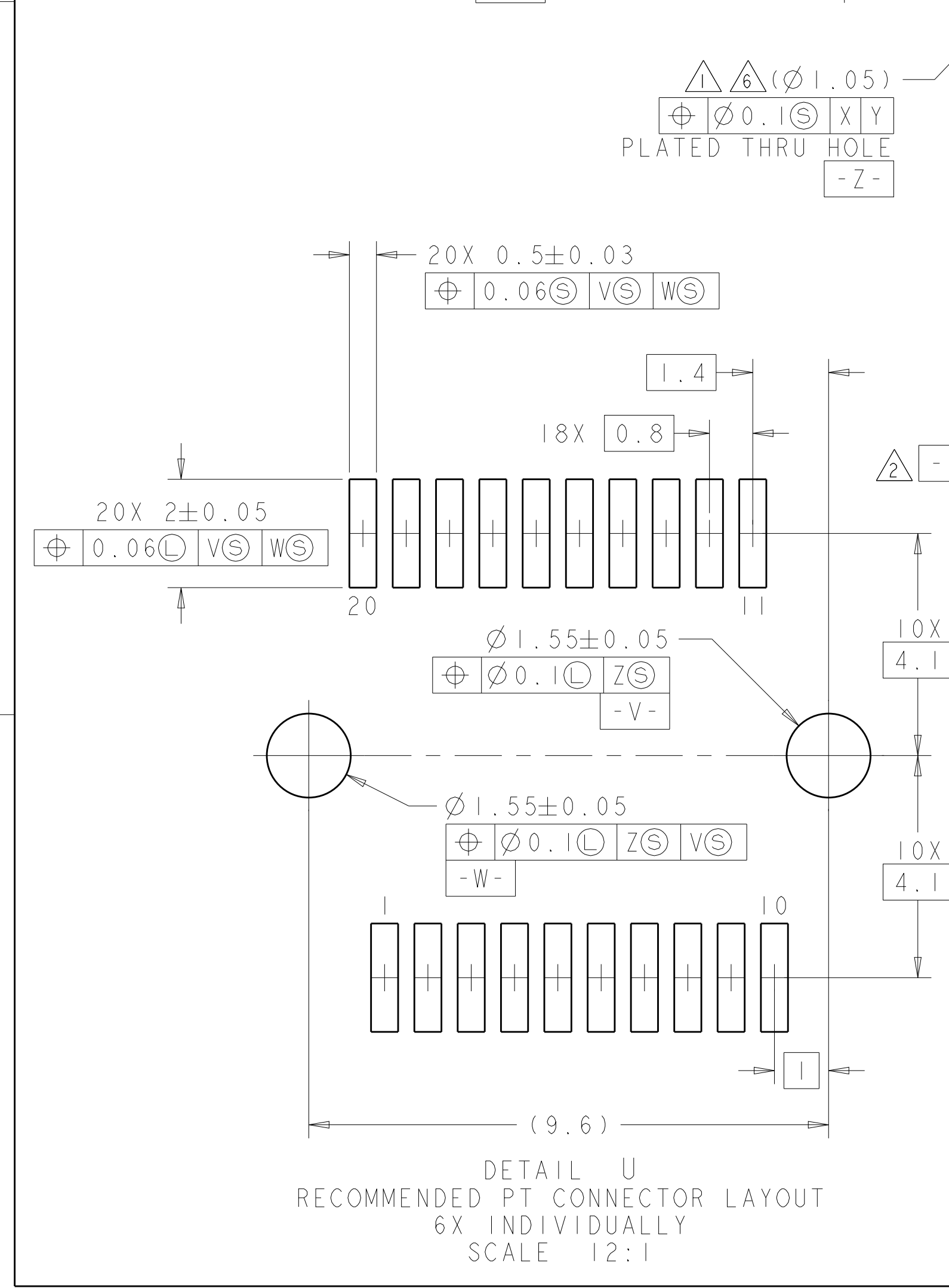
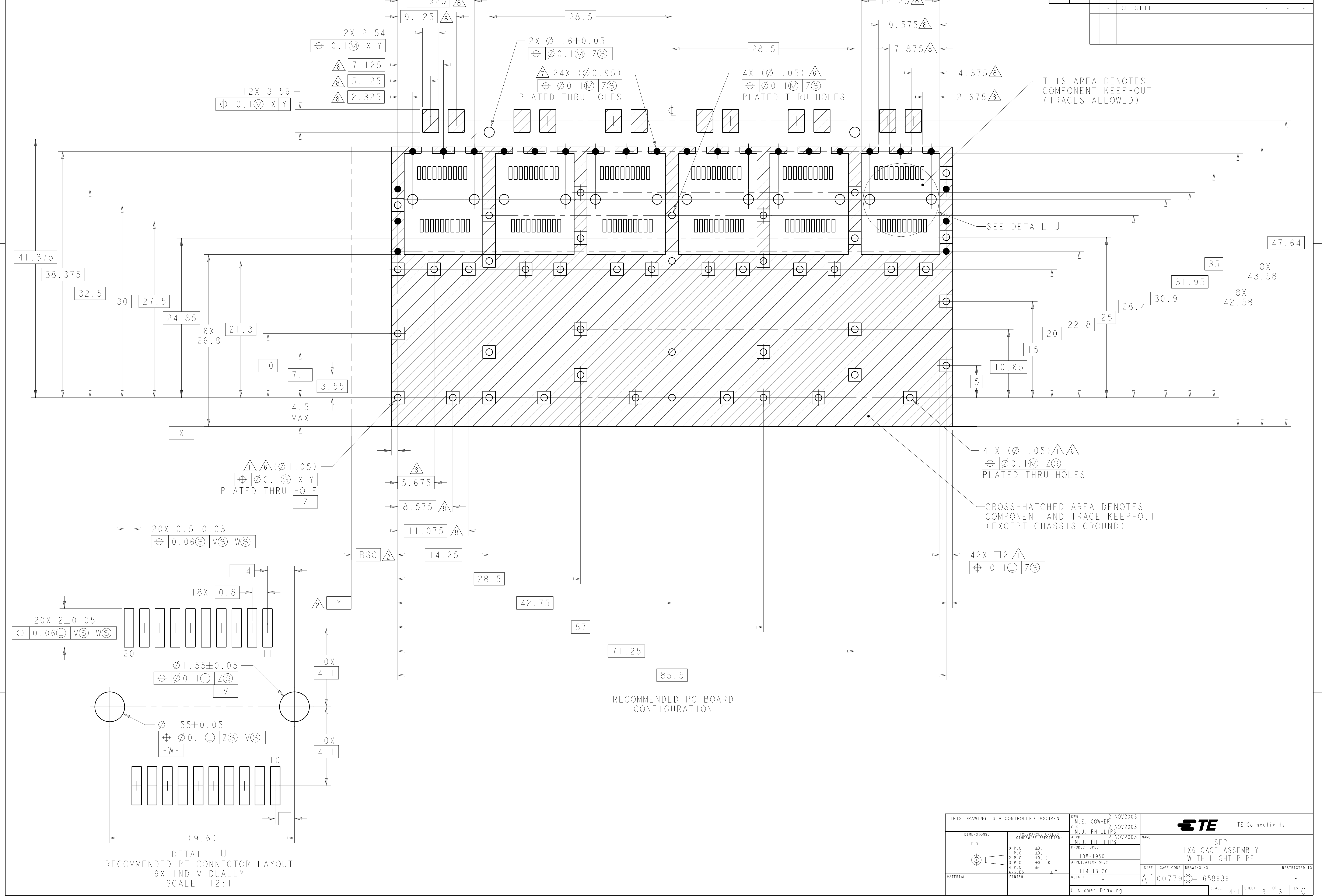


THIS DRAWING IS A CONTROLLED DOCUMENT.		DMN: M.E. CONNER 21NOV2003	TE Connectivity NAME: SFP 1X6 CAGE ASSEMBLY WITH LIGHT PIPE
DIMENSIONS: mm		CHK: M.J. PHILLIPS 21NOV2003	
TOLERANCES UNLESS OTHERWISE SPECIFIED:		APVD: M.J. PHILLIPS 21NOV2003	
0 PLC ±0.1 1 PLC ±0.1 2 PLC ±0.10 3 PLC ±0.100 4 PLC ± ANGLES ±°		PRODUCT SPEC: 108-1950 APPLICATION SPEC: 114-13120 WEIGHT: - FINISH: -	
MATERIAL: -	Customer Drawing	SIZE: A100779	CAGE CODE: C=1658939 DRAWING NO: - RESTRICTED TO: - SCALE: 4:1 SHEET 2 OF 3 REV G

LOC	DIST	REV	DATE	BY	APPV
GP	00				

REVISIONS					
NO.	DESCRIPTION	DATE	BY	APPV	
1	SEE SHEET 1				



THIS DRAWING IS A CONTROLLED DOCUMENT.		OWN: M.E. CONNER 21NOV2003	TE Connectivity
DIMENSIONS: mm		CHK: M.J. PHILLIPS 21NOV2003	
TOLERANCES UNLESS OTHERWISE SPECIFIED:		APPV: M.J. PHILLIPS 21NOV2003	NAME: SFP
0 PLC	±0.1	PRODUCT SPEC	1X6 CAGE ASSEMBLY WITH LIGHT PIPE
1 PLC	±0.1	APPLICATION SPEC	SIZE: CAGE CODE DRAWING NO
2 PLC	±0.10	108-1950	RESTRICTED TO
3 PLC	±0.100	114-13120	A100779C=1658939
4 PLC	±0.100	WEIGHT	SCALE 4:1 SHEET 3 OF 3 REV G
ANGLES	±1°	Customer Drawing	