

T1 / CEPT / ISDN-PRI Reinforced Insulation

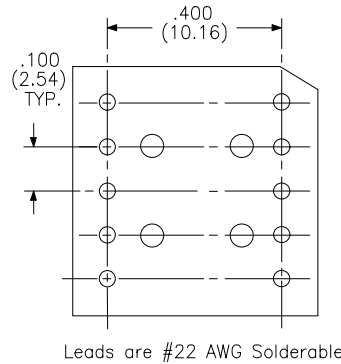
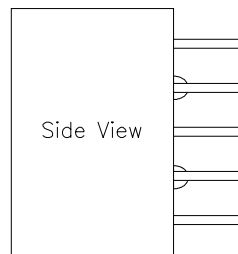
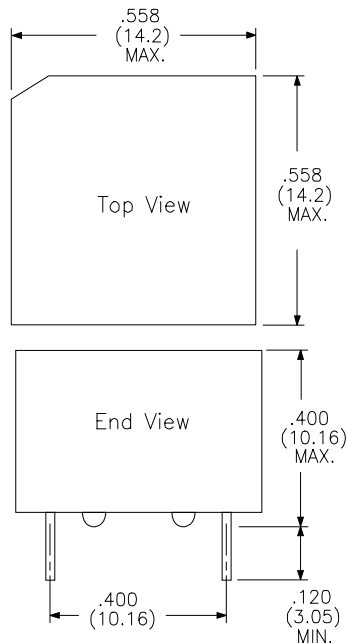
For T1/CEPT/ISDN-PRI Telecom Applications
Designed to meet CCITT and FCC Requirements
Reinforced Insulation per EN 41003/EN 60950

3000 V_{RMS} minimum Isolation.

Electrical Specifications^{1,2} at 25°C

Part Number	Turns Ratio (± 5%)	OCL min. (mH)	Pri-Sec C _{w/w} max. (pF)	Leakage L _L max. (μH)	Pri. DCR max. (Ω)	Sec. DCR max. (Ω)	Schem. Style	Primary Pins
T-13611	1:1:2	0.8	25	0.80	0.7	0.7	D	1-5 ⁽³⁾
T-13612	1CT:2CT	1.2	30	0.55	0.7	1.1	C	1-5
T-13613	1:1	1.2	30	0.80	0.7	0.7	F	1-5
T-13614	1CT:2CT	1.2	30	0.55	0.7	1.1	C	1-5
T-13615	1CT:3CT:1	0.6	30	0.80	0.7	1.7	E	1-3
T-13616	1:1.08/1.36	1.5	20	0.60	0.7	0.9	B	10-6
T-13617	1:1.14CT	1.5	30	0.70	0.7	0.9	B	10-6
T-13618	1:1:1.58	0.8	18	0.70	0.7	0.5	D	1-5 ⁽³⁾
T-13619	1:1:1	1.2	50	1.20	1.1	1.1	G	
T-13620	1CT:1	1.2	25	0.8	0.7	0.7	B	1-5
T-13621	1CT:2CT	1.2	30	0.55	0.7	1.1	C	10-6
T-13623	1:2CT	1.2	40	0.5	0.7	1.1	A	1-5
T-13624	1:2.3CT	1.2	35	0.8	0.7	1.15	A	1-5
T-13633	1:1/1.26	1.5	35	0.60	0.7	1.1	B	10-6
T-13634	1:1.58/2	1.5	20	0.70	0.7	1.2	B	10-6
T-13635	1:1.36CT	1.2	35	0.60	0.7	0.9	B	10-6

1. All Transformers have ET-Product of 10 V-μsec min.
2. OCL Measured at Primary @ 100KHz & 20mV
3. For Schematic D, Primary measured with Pins 2 & 4 shorted.



Dimensions in Inches (mm)

Note: Per Schematic Diagrams, unused leads are removed.

