

PLEASE CHECK WWW.MOLEX.COM FOR LATEST PART INFORMATION

Part Number: [0512392005](#)
Status: **Active**
Description: CRC™ Shielded Rectangular I/O Plug Housing, For Plug Assembly, Female Terminal, Signal, 20 Circuits, Polarization Type D, Polarization Position C-4

Documents:

[Drawing \(PDF\)](#) [Product Specification PS-51238-018 \(PDF\)](#)
[Product Specification PS-51238-010 \(PDF\)](#) [RoHS Certificate of Compliance \(PDF\)](#)

Agency Certification

CSA	LR19980
TUV	R72081037
UL	E29179

General

Product Family	I/O Connectors
Series	51239
Application	N/A
Component Type	Housing
Product Name	CRC™
Type	N/A

Physical

Boot Color	N/A
Breakaway	No
Circuits (Loaded)	N/A
Circuits (maximum)	20
Color - Resin	Black
Flammability	94V-0
Gender	Plug
Keying to Mating Part	Yes
Lock to Mating Part	Yes
Material - Plating Mating	n/a
Material - Resin	Polyester
Number of Rows	5
Orientation	Vertical
PCB Locator	No
Packaging Type	Tray
Panel Mount	N/A
Pitch - Mating Interface (in)	0.118 In
Pitch - Mating Interface (mm)	3.00 mm
Pitch - Term. Interface (in)	0.118 In
Pitch - Term. Interface (mm)	3.00 mm
Polarized to Mating Part	Yes
Polarized to PCB	N/A
Ports	1
Surface Mount Compatible (SMC)	No
Temperature Range - Operating	-40°C to +105°C
Termination Interface: Style	N/A
Waterproof / Dustproof	No

Electrical

Current - Maximum per Contact	N/A
Shielded	No
Voltage - Maximum	250V AC (RMS)/DC

Material Info



EU RoHS

ELV and RoHS Compliant
REACH SVHC Contains SVHC: No
Halogen-Free Status
Not Reviewed

China RoHS



Need more information on product environmental compliance?

Email productcompliance@molex.com
 For a multiple part number RoHS Certificate of Compliance, [click here](#)

Please visit the [Contact Us](#) section for any non-product compliance questions.

Search Parts in this Series

[51239Series](#)

Mates With

[51233](#)

Use With

[56380](#) plug shell body, [56120](#) and [56121](#) female terminal, [56381](#) plug shell cover

Reference - Drawing Numbers

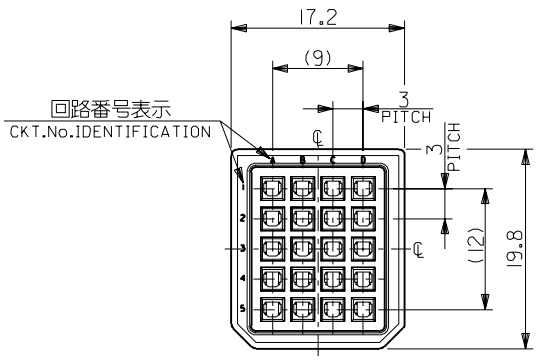
Product Specification
Sales Drawing

PS-51238-010, PS-51238-018, RPS-51238-001
SD-51239-005

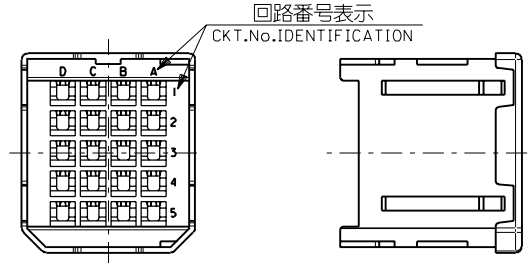
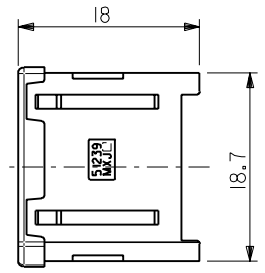
This document was generated on 04/06/2010

PLEASE CHECK WWW.MOLEX.COM FOR LATEST PART INFORMATION

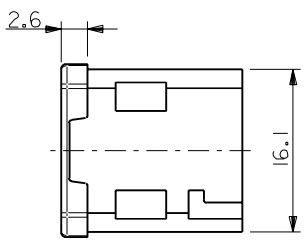
DWG. NO. SD-51239-005



嵌合側
MATING SIDE



電線挿入側
WIRE SIDE



注記
NOTES

1. 材質 MATERIAL
ガラス入りPBT樹脂 UL94V-0 色:黒
HOUSING : PBT G.F. UL94V-0 COLOR : BLACK
2. 適用端子 : 56120-8*90 , 56121-8*90
APPLICABLE CRIMP PIN : 56120-8*90 , 56121-8*90
3. 適用シエルボディ : 56380-2000
APPLICABLE SHELL BODY : 56380-2000
4. 適用シエルカバー : 56381-2000
APPLICABLE SHELL COVER : 56381-2000
5. 嵌合相手 : 51233-201*
MEET WITH : 51233-201*

<誤嵌合防止キー(極性)タイプ> <POLARITY KEY TYPE>

51234-2001	51234-2002	51234-2003	51239-2004	51239-2005
STANDARD TYPE	A TYPE	B TYPE	C TYPE	D TYPE

C-4	D	51239-2005	51239-***0*	20
C-3	C	51239-2004		
B-3	B	51239-2003		
B-2	A	51239-2002		
—	STANDARD	51239-2001		
POLARITY POSITION (CIRCUIT No.)	POLARITY TYPE	MATERIAL No.	MODEL No.	CIRCUIT

DO NOT SCALE DRAWING

EC NO. DRWN: CHK: APPR:	EC NO. DRWN: CHK: APPR:	EC NO. DRWN: CHK: APPR:
----------------------------------	----------------------------------	----------------------------------

REVISED 01/10/04
EC NO. J2002-0786
DRWN: S.AKIYAMA
CHK: J.MIYAZAWA
APPR: Y.O.IITO

RELEASED 01/02/09
EC NO. JD2001-1040
DRWN: S.AKIYAMA
CHK: J.MIYAZAWA
APPR: H.IKESUGI

DESCRIPTION	MATERIAL 材料
FINISH 仕上げ	—
WIRE RANGE 適用電線範囲	—
INS. RANGE 被覆外径	—

GENERAL TOLERANCES: (UNLESS SPECIFIED) 一般公差	SCALE	DESIGN UNITS
10 UNDER 未満	2-1	mm <input checked="" type="checkbox"/> INCH
10 OVER 以上		
30 UNDER 未満		
30 OVER 以上		
ANGLE 角度		

DRAWN BY & DATE
S. Akiyama 1/01/25

CHECKED BY & DATE
J. Miyazawa / Y. Ito

APPROVED BY & DATE
H. Ikesugi

CAD FILE NAME
51239005.S01

TITLE:	DIMENSIONS:	SHT	REV
COMPACT ROBOT CONN. (CRC) PLUG SOCKET HS'G	mm <input type="checkbox"/> INCH <input type="checkbox"/> mm <input checked="" type="checkbox"/> mm ONLY		REVISE ON CAD ONLY
MATERIAL NO.	DRAWING NO.	SHEET NO.	SIZE
SEE CHART	SD-51239-005	1 OF 1	B

THIS DRAWING CONTAINS INFORMATION THAT IS PROPRIETARY TO MOLEX INCORPORATED AND SHOULD NOT BE USED WITHOUT WRITTEN PERMISSION.