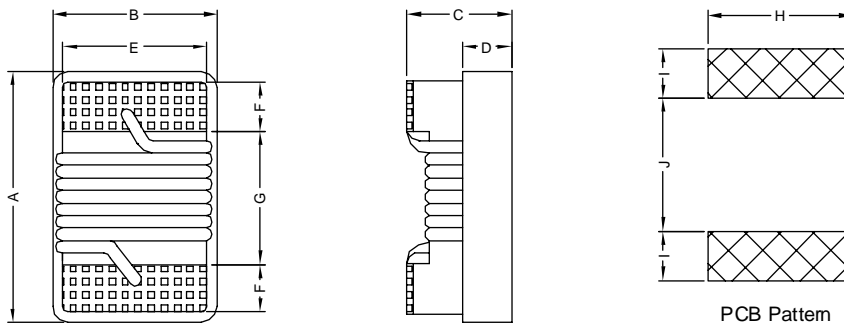


### 1. PART NO. EXPRESSION :

**SCI0402S-1N0KF**  
 (a) (b) (c) (d) (e)(f)

- (a) Series code
- (b) Dimension code
- (c) Type code : S ( Standard )
- (d) Inductance code : 1N0 = 1.0nH
- (e) Tolerance code : G =  $\pm 2\%$ , J =  $\pm 5\%$ , K =  $\pm 10\%$
- (f) F : RoHS Compliant

### 2. CONFIGURATION & DIMENSIONS :



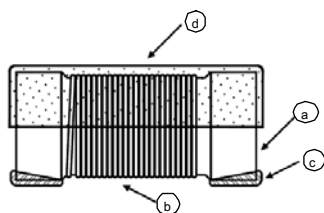
Unit:m/m

A	B	C	D	E	F	G	H	I	J
1.27 Max.	0.76 Max.	0.61 Max.	0.15 Ref.	0.51 Ref.	0.23 Ref.	0.56 Ref.	0.66 Ref.	0.50 Ref.	0.46 Ref.

### 3. SCHEMATIC :



### 4. MATERIALS :



- (a) Ceramic Core
- (b) Magnet Wire
- (c) Electrode (Ag/Pd+Ni+Sn)
- (d) UV Glue



**RoHS Compliant**

NOTE : Specifications subject to change without notice. Please check our website for latest information.

03.02.2015

### 5. GENERAL SPECIFICATION :

- a) Operating temp. : -40° C to +125° C
- b) Storage condition (component in its packaging)
  - i) Temperature : -10 to 40° C
  - ii) Humidity : 60%

### 6. ELECTRICAL CHARACTERISTICS :

Part No.	Tolerance Available	L ( nH )	Test Freq ( MHz )	Q Min.	SRF ( MHz ) Min.	DCR ( $\Omega$ ) Max.	IDC ( mA ) Max.	900MHz L Typ.	900MHz Q Typ.	1.7GHz L Typ.	1.7GHz Q Typ.
SCI0402S-1N0□F	K	1.0	250	16	12700	0.045	1360	1.02	77	1.02	69
SCI0402S-1N9□F	K	1.9	250	16	11300	0.070	1040	1.72	68	1.74	82
SCI0402S-2N0□F	K	2.0	250	16	11100	0.070	1040	1.93	54	1.93	75
SCI0402S-2N2□F	K	2.2	250	19	10800	0.070	960	2.19	59	2.23	100
SCI0402S-2N4□F	K	2.4	250	15	10500	0.070	790	2.24	51	2.27	68
SCI0402S-2N7□F	K	2.7	250	16	10400	0.120	640	2.23	42	2.25	61
SCI0402S-3N3□F	K	3.3	250	19	7000	0.066	840	3.10	65	3.12	87
SCI0402S-3N6□F	J,K	3.6	250	19	6800	0.066	840	3.56	45	3.62	71
SCI0402S-3N9□F	J,K	3.9	250	19	5800	0.066	840	3.89	50	4.00	75
SCI0402S-4N3□F	J,K	4.3	250	18	6000	0.091	700	4.19	47	4.30	71
SCI0402S-4N7□F	J,K	4.7	250	18	4700	0.130	640	4.55	48	4.68	68
SCI0402S-5N1□F	J,K	5.1	250	20	4800	0.083	800	5.15	56	5.25	82
SCI0402S-5N6□F	J,K	5.6	250	20	4800	0.083	760	5.16	54	5.28	81
SCI0402S-6N2□F	J,K	6.2	250	20	4800	0.083	760	6.16	52	6.37	76
SCI0402S-6N8□F	J,K	6.8	250	20	4800	0.083	680	6.56	63	6.93	78
SCI0402S-7N5□F	J,K	7.5	250	22	4800	0.104	680	7.91	60	8.22	88
SCI0402S-8N2□F	J,K	8.2	250	22	4400	0.104	680	8.50	57	8.85	84
SCI0402S-8N7□F	J,K	8.7	250	18	4100	0.200	480	8.78	54	9.21	73
SCI0402S-9N0□F	J,K	9.0	250	22	4160	0.104	680	9.07	62	9.53	78
SCI0402S-9N5□F	J,K	9.5	250	18	4000	0.200	480	9.42	54	9.98	69
SCI0402S-10N□F	K, J, G	10	250	21	3900	0.195	480	9.80	50	10.10	67
SCI0402S-11N□F	K, J, G	11	250	24	3680	0.120	640	10.70	52	11.20	78



**RoHS Compliant**

NOTE : Specifications subject to change without notice. Please check our website for latest information.

03.02.2015



**SUPERWORLD ELECTRONICS (S) PTE LTD**

## 6. ELECTRICAL CHARACTERISTICS :

Part No.	Tolerance Available	L (nH)	Test Freq (MHz)	Q Min.	SRF (MHz) Min.	DCR (Ω) Max.	IDC (mA) Max.	900MHz L Typ.	900MHz Q Typ.	1.7GHz L Typ.	1.7GHz Q Typ.
SCI0402S-12N□F	K, J, G	12	250	24	3600	0.120	640	11.90	53	12.70	71
SCI0402S-13N□F	K, J, G	13	250	24	3450	0.210	440	13.40	51	14.60	57
SCI0402S-15N□F	K, J, G	15	250	24	3280	0.172	560	14.60	55	15.50	77
SCI0402S-16N□F	K, J, G	16	250	24	3100	0.220	560	16.60	46	18.80	47
SCI0402S-18N□F	K, J, G	18	250	25	3100	0.230	420	18.30	57	20.30	62
SCI0402S-19N□F	K, J, G	19	250	24	3040	0.202	480	19.10	50	21.10	67
SCI0402S-20N□F	K, J, G	20	250	25	3000	0.250	420	20.70	52	23.70	53
SCI0402S-22N□F	K, J, G	22	250	25	2800	0.300	400	23.20	53	26.80	53
SCI0402S-23N□F	K, J, G	23	250	24	2720	0.300	400	23.80	49	26.90	64
SCI0402S-24N□F	K, J, G	24	250	25	2700	0.300	400	25.10	51	29.50	50
SCI0402S-27N□F	K, J, G	27	250	24	2480	0.300	400	28.70	49	33.50	63
SCI0402S-30N□F	K, J, G	30	250	25	2350	0.350	400	31.10	46	38.50	39
SCI0402S-33N□F	K, J, G	33	250	24	2350	0.350	400	34.90	31	41.70	32
SCI0402S-36N□F	K, J, G	36	250	24	2320	0.440	320	39.50	44	48.40	53
SCI0402S-39N□F	K, J, G	39	250	25	2100	0.550	200	41.70	47	50.20	45
SCI0402S-40N□F	K, J, G	40	250	24	2240	0.500	320	39.00	44	47.40	33
SCI0402S-43N□F	K, J, G	43	250	25	2030	0.810	100	45.80	46	61.60	34
SCI0402S-47N□F	K, J, G	47	250	25	2100	0.830	150	50.00	38	55.80	37
SCI0402S-51N□F	K, J, G	51	250	25	1750	0.820	100	50.40	47	59.40	37
SCI0402S-56N□F	K, J, G	56	250	25	1760	0.970	100	57.40	49	72.40	40
SCI0402S-68N□F	K, J, G	68	250	22	1620	1.120	100	69.60	45	83.40	38
SCI0402S-82N□F	K, J, G	82	250	22	1260	1.550	50	-	-	-	-
SCI0402S-R10□F	K, J, G	100	250	22	1160	2.000	30	-	-	-	-
SCI0402S-R12□F	K, J, G	120	250	20	>1800	2.660	50	-	-	-	-

Inductance tolerance :

□ : G : ±2%

J : ±5%

K : ±10%



**RoHS Compliant**

NOTE : Specifications subject to change without notice. Please check our website for latest information.

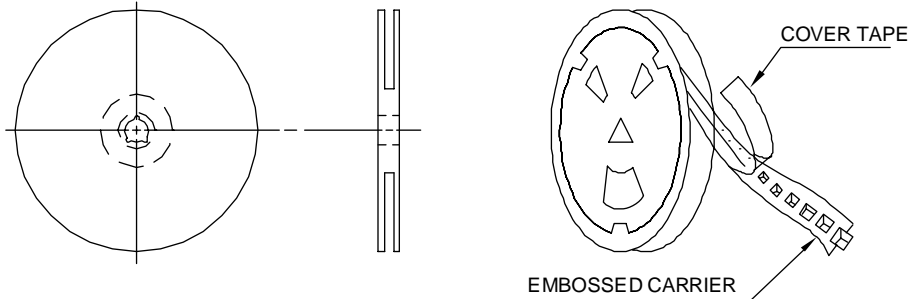
03.02.2015



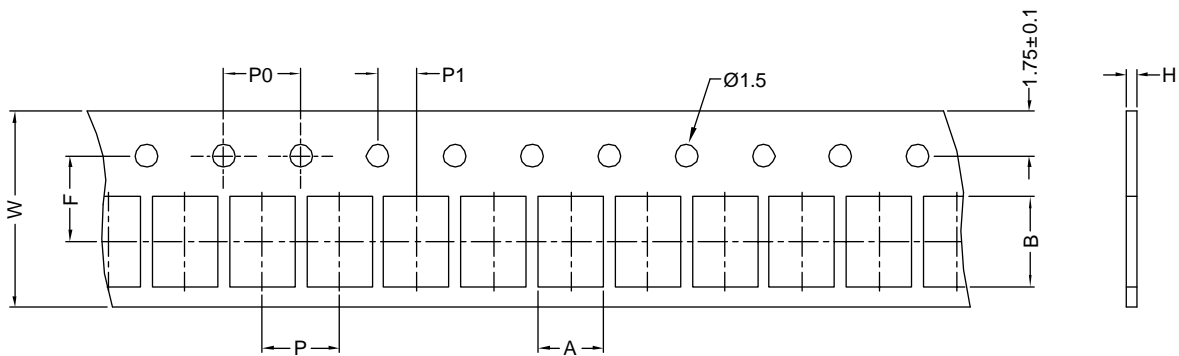
**SUPERWORLD ELECTRONICS (S) PTE LTD**

### 7. PACKAGING INFORMATION :

Reel Configuration :



Paper Tape :



Dimension (unit: mm)

Series	A	B	H	F	P	P0	P1	W	Qty
SCI0402S	0.72	1.19	0.60	3.50	2.00	4.00	2.00	8.00	4000pcs / reel
SCI0603S	1.35	1.95	0.95	3.50	4.00	4.00	2.00	8.00	4000pcs / reel



**RoHS Compliant**

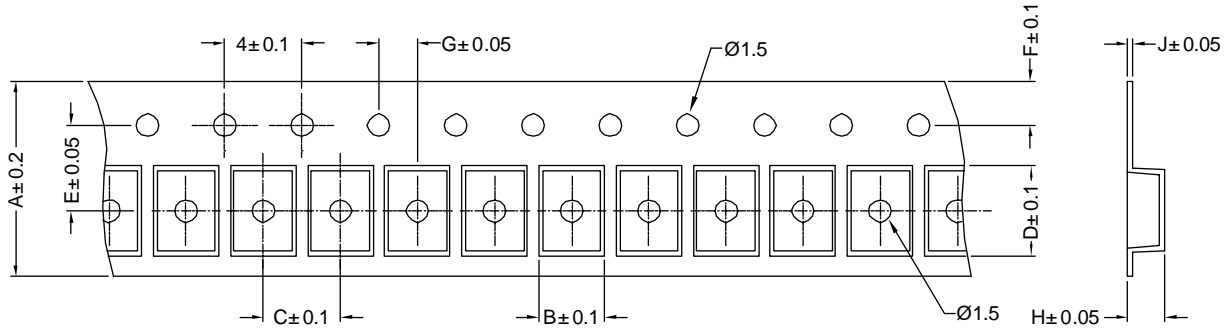
NOTE : Specifications subject to change without notice. Please check our website for latest information.

03.02.2015



**SUPERWORLD ELECTRONICS (S) PTE LTD**

Embossed Carrier Tape :



Dimension (unit: mm)

Series	A	B	C	D	E	F	G	H	J	Qty
SCI0805S	8	1.85	4	2.30	3.5	1.75	2	1.45	0.23	2000pcs / reel
SCI0805LP	8	1.80	4	2.30	3.5	1.75	2	0.90	0.23	2000pcs / reel
SCI0805HQ	8	1.85	4	2.30	3.5	1.75	2	1.45	0.23	2000pcs / reel
SCI1008S	8	2.70	4	2.80	3.5	1.75	2	2.00	0.23	2000pcs / reel
SCI1008LP	8	2.70	4	2.80	3.5	1.75	2	1.50	0.23	2000pcs / reel
SCI1008HQ	8	2.70	4	2.80	3.5	1.75	2	2.00	0.23	2000pcs / reel



**RoHS Compliant**

NOTE : Specifications subject to change without notice. Please check our website for latest information.

03.02.2015



**SUPERWORLD ELECTRONICS (S) PTE LTD**