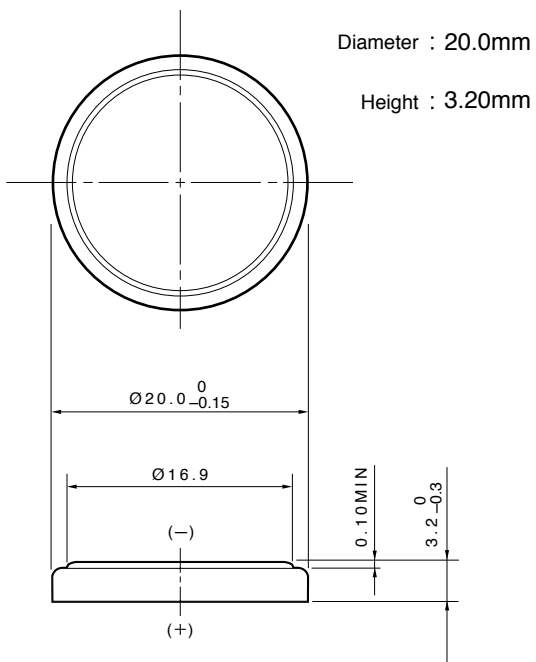


**Lithium Manganese Dioxide Battery** **CR2032**

■ **Dimensions (mm)**



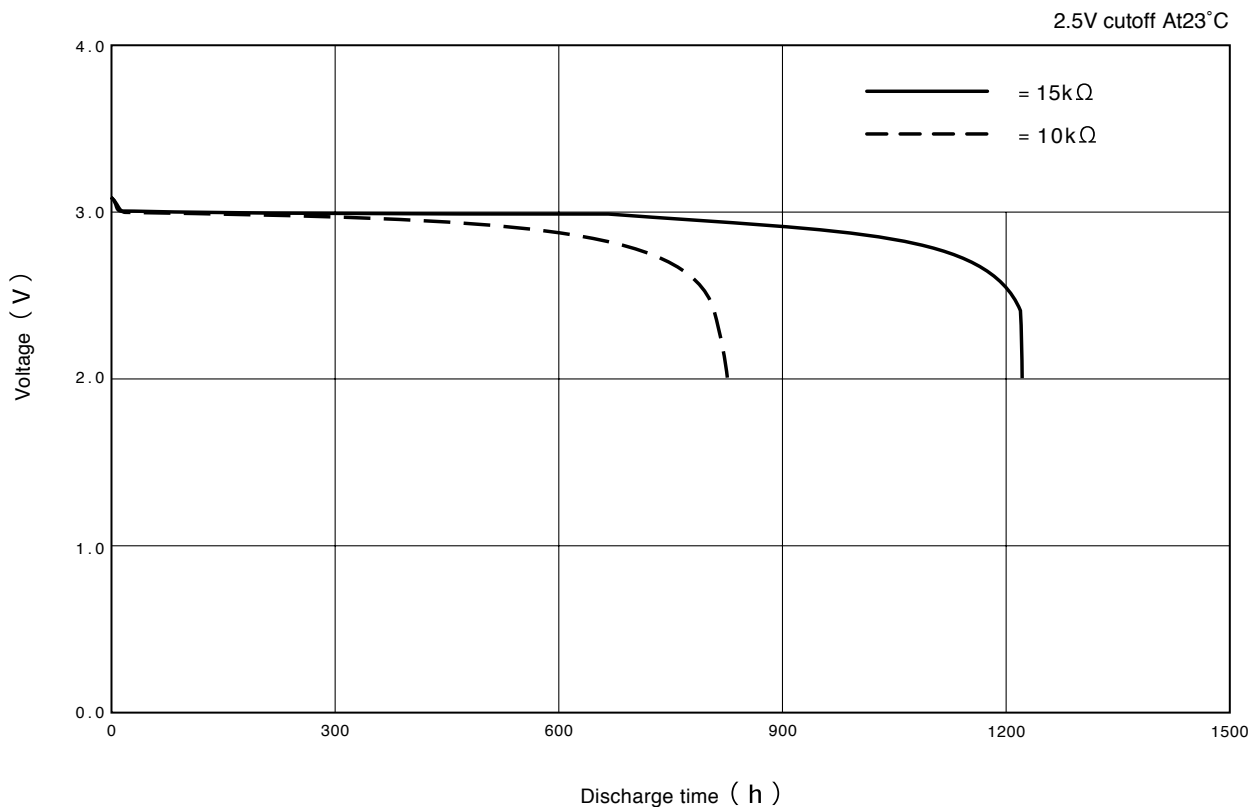
■ **Specifications**

Nominal Voltage	<b>3V</b>
Nominal Capacity (2.5V cutoff)	<b>220mAh</b>
Recommended Continuous Drain	<b>0.3mA</b>
Recommended Pulse Drain	<b>12mA</b>
Weight	<b>3.2g</b>

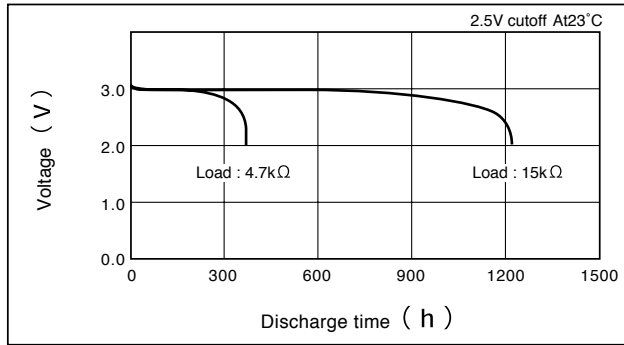
**Applications**

- Electronic Watch or Clock ● Card Radio
- Remote Controller ● Electronic Game, Toy
- Memory Back-up Power Source for SRAM or Real Time Clock (RTC)

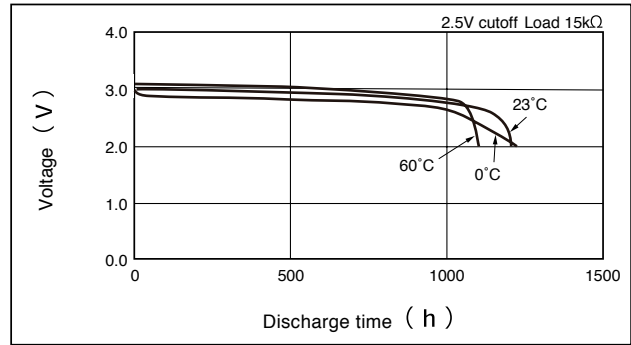
■ **Discharge Characteristics**



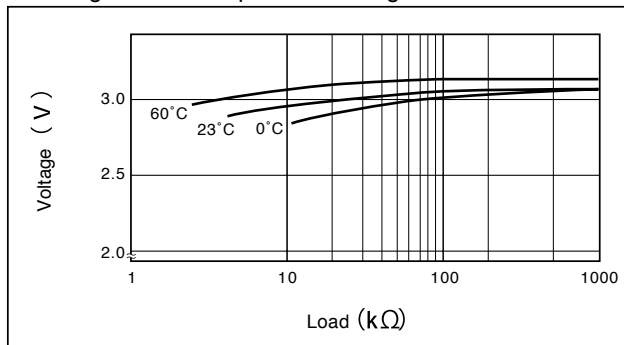
Discharge Characteristics on Load



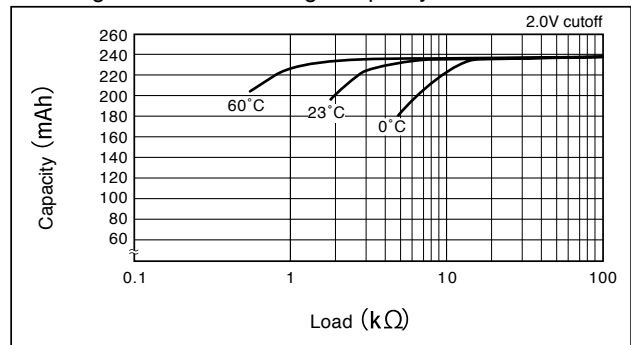
Discharge Characteristics on Temperature



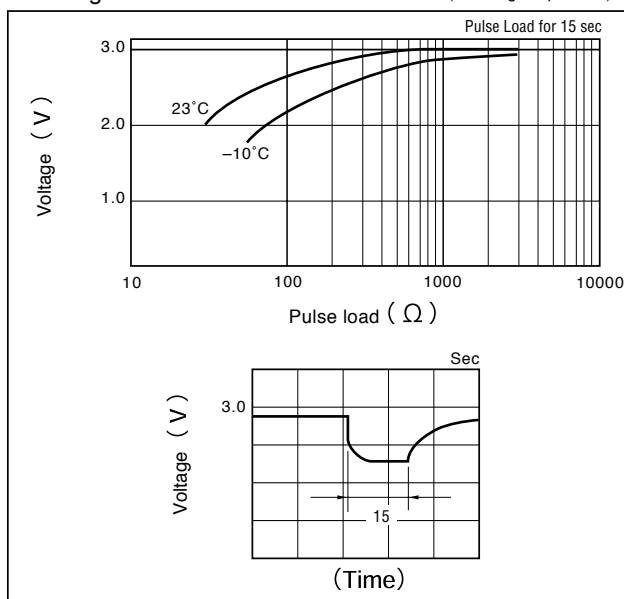
Discharge Load vs. Operation Voltage (Discharge depth 40%)



Discharge Load vs. Discharge Capacity



Discharge Characteristics on Pulse Load (Discharge depth 40%)



Storage Characteristics

