

Han Brid-RJ45 C-M RJ Industrial AWG26

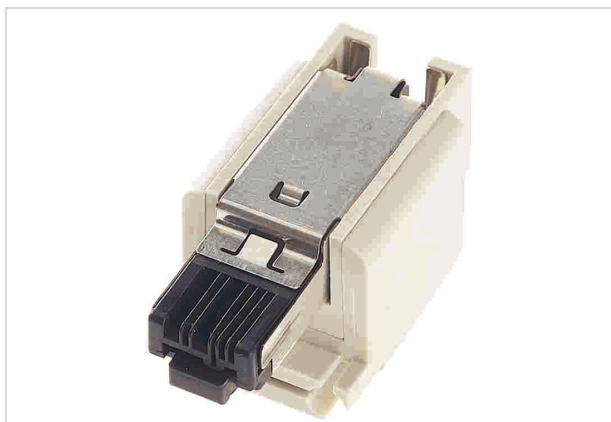


Image is for illustration purposes only. Please refer to product description.

Part number	09 12 003 3013
Specification	Han Brid-RJ45 C-M RJ Industrial AWG26
HARTING eCatalogue	https://b2b.harting.com/09120033013

Identification

Category	Inserts
Series	Han-Brid®
Identification	Han-Brid® RJ45 C
Specification	hybrid network connector

Version

Gender	Male
Size	3 A
Number of contacts	2
further contacts	+ RJ45
Details	With RJ Industrial

Technical characteristics

Conductor cross-section	0.12 mm ² Stranded
Conductor cross-section	AWG 26 Stranded
Wire outer diameter	≤1.6 mm
Rated current	10 A
Rated voltage	24 V
Rated impulse voltage	0.8 kV
Pollution degree	3
Transmission characteristics	Cat. 5 Class D up to 100 MHz
Data rate	10 Mbit/s 100 Mbit/s



Pushing Performance

Technical characteristics

Insulation resistance	>10 ¹⁰ Ω
Limiting temperature	-40 ... +70 °C
Mating cycles	≥500

Material properties

Material (insert)	Polycarbonate (PC)
Colour (insert)	RAL 7032 (pebble grey)
Material flammability class acc. to UL 94	V-0
RoHS	compliant
ELV status	compliant
China RoHS	e
REACH Annex XVII substances	No
REACH ANNEX XIV substances	No
REACH SVHC substances	No

Specifications and approvals

Specifications	IEC 61984
UL / CSA	UL 1977 ECBT2.E235076 CSA-C22.2 No. 182.3 ECBT8.E235076

Commercial data

Packaging size	10
Net weight	41.9 g
Country of origin	Romania
European customs tariff number	85366990
eCl@ss	27440205 Contact insert for industrial connectors