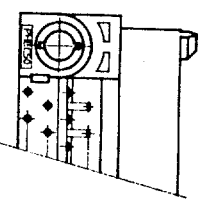
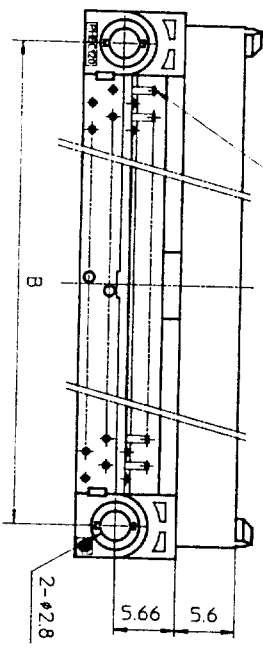


NO. OF CONTACTS: 40,60,68,80,100,120  
CRITERION PIN

NO. OF CONTACTS: 30,34,50



MATERIAL BODY

LOCATOR : NYLON RESIN GLASS REINFORCED (UL94V-0)  
COLOR : BLACK

CONTACT : COPPER ALLOY

MOUNTING LATCH : PHOSPHOR BRONZE  
SOLDER PLATED

SCREW NUT : STEEL  
NICKEL PLATED

CAT. NO.	NO. OF CONTACTS (MATING SIDE)	DIMENSIONS				
		A	B	C	D	E
PHEC30P-R21	15/ROW X 2 ROWS	32.67	26.67	30.3	20.42	17.78
PHEC34P-R21	17/ROW X 2 ROWS	35.21	29.21	32.84	22.96	20.32
PHEC40P-R21	20/ROW X 2 ROWS	39.02	33.02	36.65	26.77	24.13
PHEC50P-R21	25/ROW X 2 ROWS	45.37	39.37	43	33.12	30.48
PHEC60P-R21	30/ROW X 2 ROWS	51.72	45.72	49.35	39.47	36.83
PHEC68P-R21	34/ROW X 2 ROWS	56.8	50.8	54.43	44.55	41.91
PHEC80P-R21	40/ROW X 2 ROWS	64.42	58.42	62.05	52.17	49.53
PHEC100P-R21	50/ROW X 2 ROWS	77.12	71.12	74.75	64.87	62.23
PHEC120P-R21	60/ROW X 2 ROWS	89.82	83.82	87.45	77.57	74.93

TOLERANCES UNLESS OTHERWISE SPECIFIED: ±0.3

CONTACT PLATING TABLE (THICKNESS: μm)

CONTACT AREA	REMAINDER
GOLD 0.25 MIN. OVER NICKEL 3Z	SOLDER OVER NICKEL

RECOMMENDED PC BOARD THICKNESS: 1.6 ± 0.2  
HOLE PATTERN (COMPONENT SIDE)  
NO. OF CONTACTS: 40,60,68,80,100,120

n : NO. OF CONTACTS

NOTE THROUGH-HOLES FOR MOUNTING LATCHES ALSO SHOULD BE PLATED.

PRINTED CIRCUIT CONNECTOR

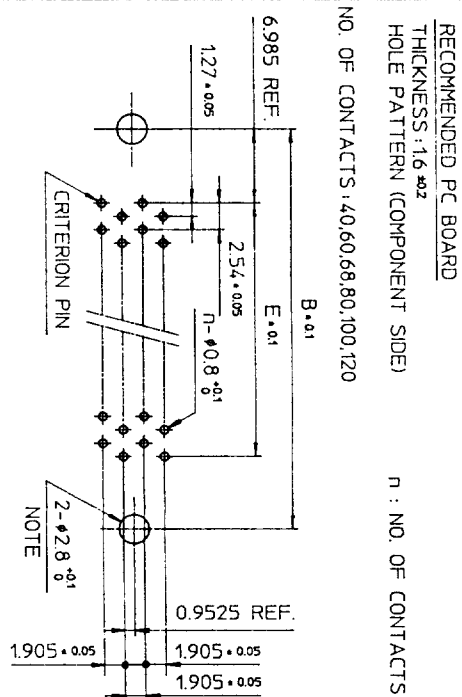
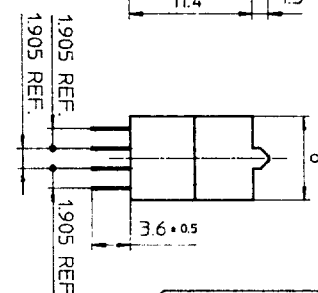
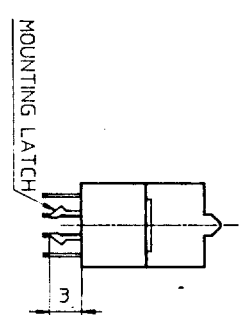
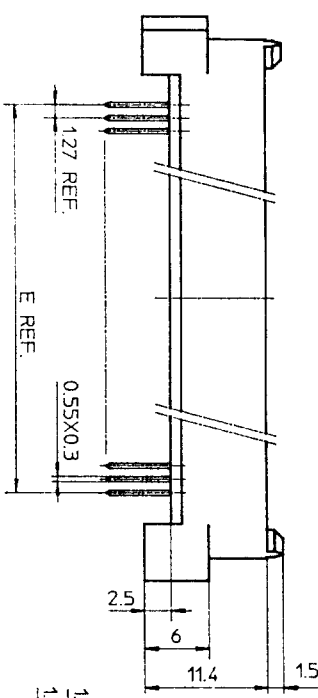
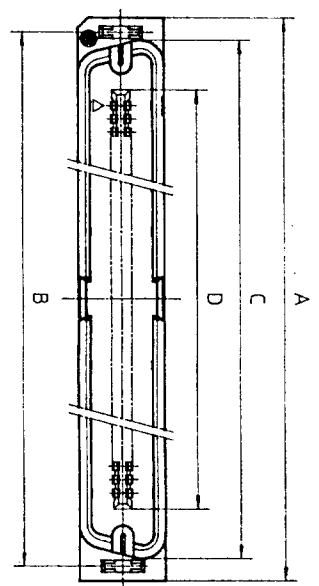
CAT. NO.	PHEC___P-R21_
DRAWING NO.	JSC 90736
REV	3

**BURNDY**  
JAPAN Ltd.

DESIGNED	
DRAWN	M. Oba
CHECKED	A. Ely
APPROVED	J. Koyama
DATE	Mar. 8, 1990

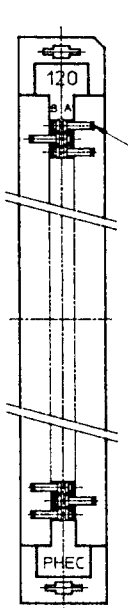
SCALE	
DIM. IN	mm
MATERIAL	

REV	DATE	DESCRIPTION	CKD
3	'92-8-14	30,34,50,68 POSITIONS ADDED. LOCATOR MATERIAL ADDED.	M.O
2	'90-6-7	EC 7866	M.O
1	'90-4-20	EC 7837	M.O

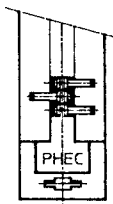


TOLERANCES UNLESS OTHERWISE SPECIFIED: ±0.3

NO. OF CONTACTS: 40,60,68,80,100,120



NO. OF CONTACTS: 30,34,50



CAT. NO.	NO. OF CONTACTS (MATING SIDE)	DIMENSIONS				
		A	B	C	D	E
PHEC30P-S21	15/ROW X 2 ROWS	34.55	31.75	30.3	20.42	17.78
PHEC34P-S21	17/ROW X 2 ROWS	37.09	34.29	32.84	22.96	20.32
PHEC40P-S21	20/ROW X 2 ROWS	40.9	38.1	36.65	26.77	24.13
PHEC50P-S21	25/ROW X 2 ROWS	47.25	44.45	43	33.12	30.48
PHEC60P-S21	30/ROW X 2 ROWS	53.6	50.8	49.35	39.47	36.83
PHEC68P-S21	34/ROW X 2 ROWS	58.68	55.88	54.43	44.55	41.91
PHEC80P-S21	40/ROW X 2 ROWS	66.3	63.5	62.05	52.17	49.53
PHEC100P-S21	50/ROW X 2 ROWS	79.0	76.2	74.75	64.87	62.23
PHEC120P-S21	60/ROW X 2 ROWS	91.7	88.9	87.45	77.57	74.93

MATERIAL

INSULATOR: NYLON RESIN GLASS REINFORCED (UL94V-0)  
COLOR: BLACK

CONTACT: COPPER ALLOY

MOUNTING LATCH: PHOSPHOR BRONZE  
SOLDER PLATED

CONTACT PLATING TABLE

CONTACT AREA	REMAINDER
GOLD 0.25 MIN	SOLDER
OVER NICKEL 3Z	OVER NICKEL

PRINTED CIRCUIT CONNECTOR

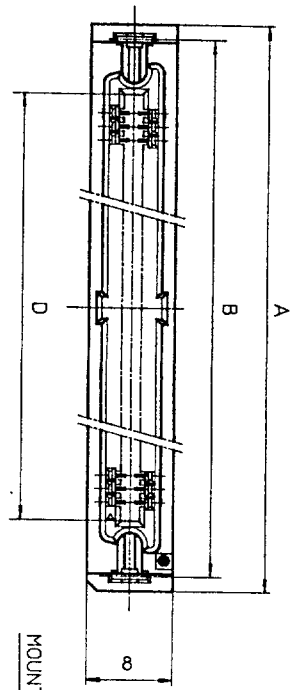
CAT. NO.	PHEC__P-S21__
DRAWING NO.	JSC 90735
REV	3

**BURNDY**  
JAPAN, Ltd.

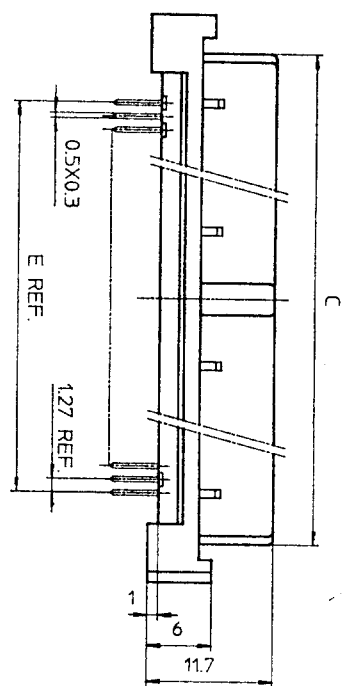
DESIGNED	
DRAWN	M. Oba
CHECKED	A. Ch
APPROVED	J. Toyoshita
DATE	Mar. 8, 1990

SCALE	1:1
DIM IN	mm
MATERIAL	

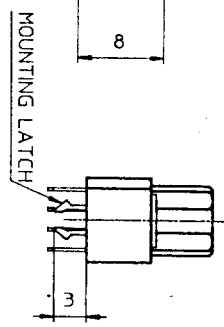
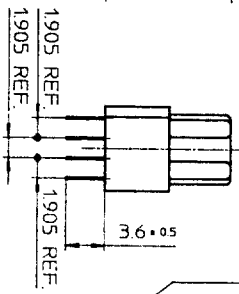
REV	DATE	DESCRIPTION	CHKD
3	8-11-92	30,34,50,68 POSITIONS ADDED.	
2	6-5-90	EC 7866	
1	4-20-90	EC 7837	



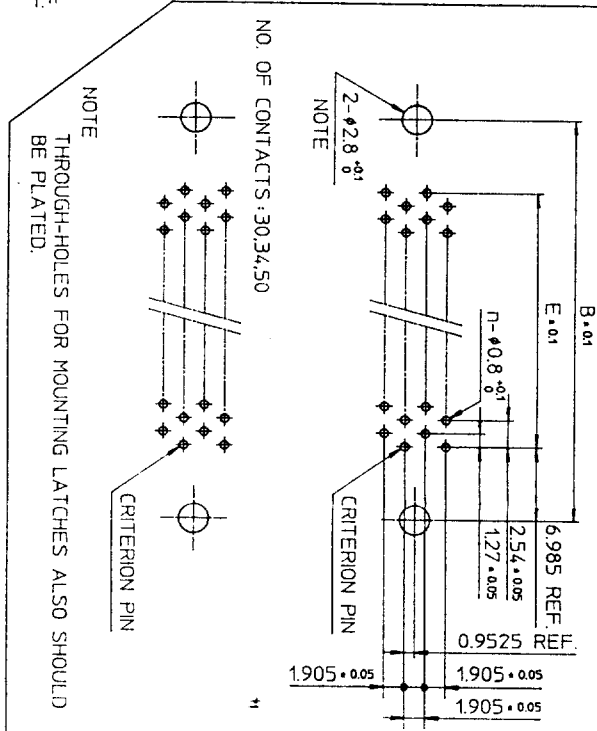
PHEC...R-S211



PHEC...R-S210

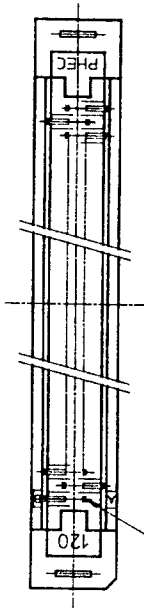


RECOMMENDED PC BOARD  
 THICKNESS: 1.6 ± 0.2  
 HOLE PATTERN (COMPONENT SIDE)  
 NO. OF CONTACTS: 40,60,68,80,100,120  
 n: NO. OF CONTACTS



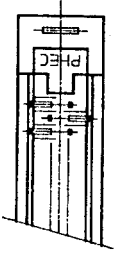
TOLERANCES  
 UNLESS OTHERWISE SPECIFIED: ±0.3

NO. OF CONTACTS: 40,60,68,80,100,120



CRITERION PIN

NO. OF CONTACTS: 30,34,50



MATERIAL

INSULATOR: PBT RESIN GLASS REINFORCED (UL94V-0)  
 COLOR: BLACK

CONTACT: PHOSPHOR BRONZE  
 MOUNTING LATCH: PHOSPHOR BRONZE  
 SOLDER PLATED

CAT. NO.	NO. OF CONTACTS (MATING SIDE)	DIMENSIONS				
		A	B	C	D	E
PHEC30R-S21	15/ROW X 2 ROWS	34.55	31.75	27.26	21.26	17.78
PHEC34R-S21	17/ROW X 2 ROWS	37.09	34.29	29.8	23.8	20.32
PHEC40R-S21	20/ROW X 2 ROWS	40.9	38.1	33.61	27.61	24.13
PHEC50R-S21	25/ROW X 2 ROWS	47.25	44.45	39.96	33.96	30.48
PHEC60R-S21	30/ROW X 2 ROWS	53.6	50.8	46.31	40.31	36.83
PHEC68R-S21	34/ROW X 2 ROWS	58.68	55.88	51.39	45.39	41.91
PHEC80R-S21	40/ROW X 2 ROWS	66.3	63.5	59.01	53.01	49.53
PHEC100R-S21	50/ROW X 2 ROWS	79.0	76.2	71.71	65.71	62.23
PHEC120R-S21	60/ROW X 2 ROWS	91.7	88.9	84.41	78.41	74.93

CONTACT PLATING TABLE

(THICKNESS: μm)

CONTACT AREA	REMAINDER
GOLD 0.25 MIN. OVER NICKEL 3.2	SOLDER OVER NICKEL

DRAWING NO. JSC 90737

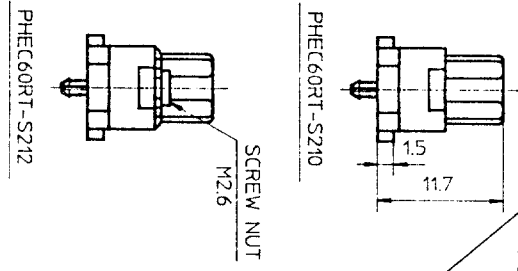
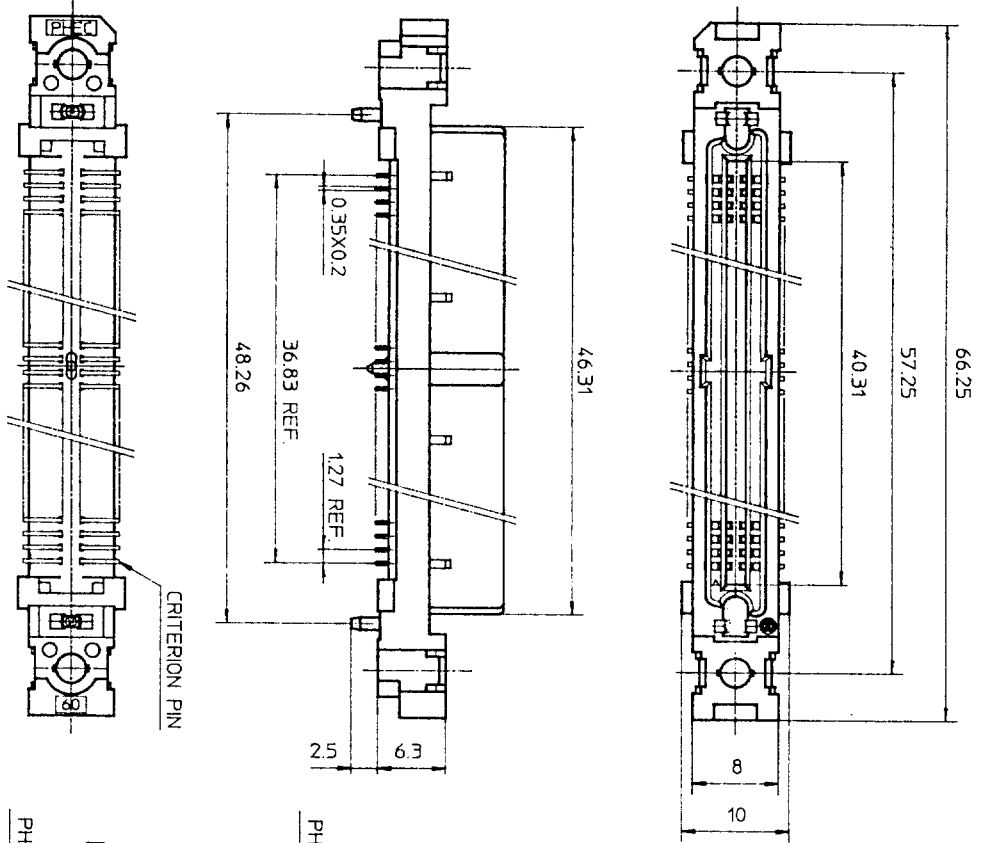
PRINTED CIRCUIT CONNECTOR  
 CAT. NO. PHEC...R-S211  
 DRAWING NO. JSC 90737  
 REV. 4  
**BURNDY JAPAN Ltd.**

DESIGNED  
 DRAWN M. Oba  
 CHECKED A. Ebi  
 APPROVED J. Hasegawa  
 DATE Mar. 8, 1990

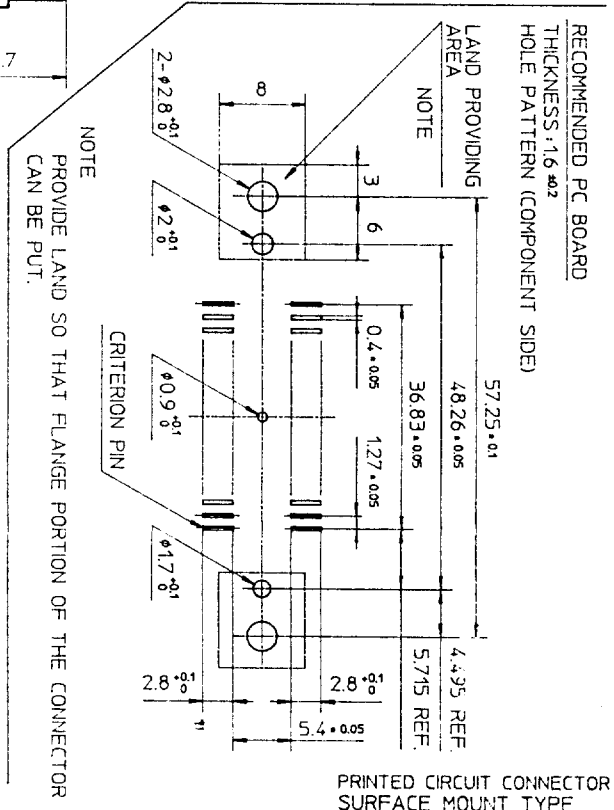
SCALE  
 DIM. IN mm  
 MATERIAL

REV.	DATE	DESCRIPTION	CHKD.
3	8-11-92	30,34,50,68 POSITIONS ADDED	no S.P.
2	5-30-90	EC 7866	no JK
1	4-20-90	EC 7837	no JK

DRAWING NO.  
JSC 90739



MATERIAL  
INSULATOR : PPS RESIN GLASS REINFORCED (UL94V-0)  
COLOR : BLACK  
CONTACT : PHOSPHOR BRONZE  
SCREW NUT : STAINLESS  
NO. OF CONTACTS : 30/ROW X 2 ROWS (MATING SIDE)



RECOMMENDED PC BOARD  
THICKNESS : 1.6 ± 0.2  
HOLE PATTERN (COMPONENT SIDE)

CONTACT PLATING TABLE

CONTACT PLATING TABLE		[THICKNESS : μm]	
CONTACT AREA	REMAINDER	GOLD 0.25 MIN.	SOLDER
		OVER NICKEL 3.2	OVER NICKEL

TOLERANCES  
UNLESS OTHERWISE SPECIFIED : ±0.3

PRINTED CIRCUIT CONNECTOR  
SURFACE MOUNT TYPE

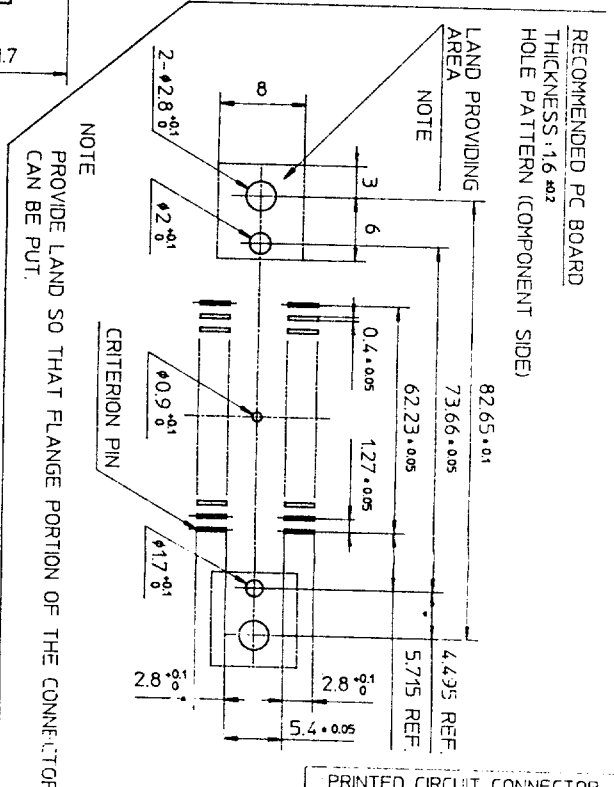
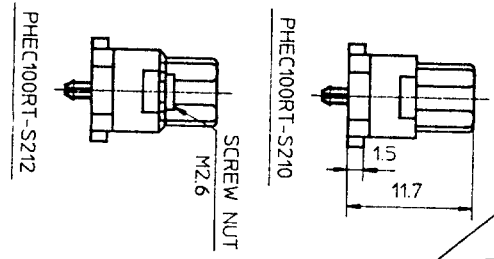
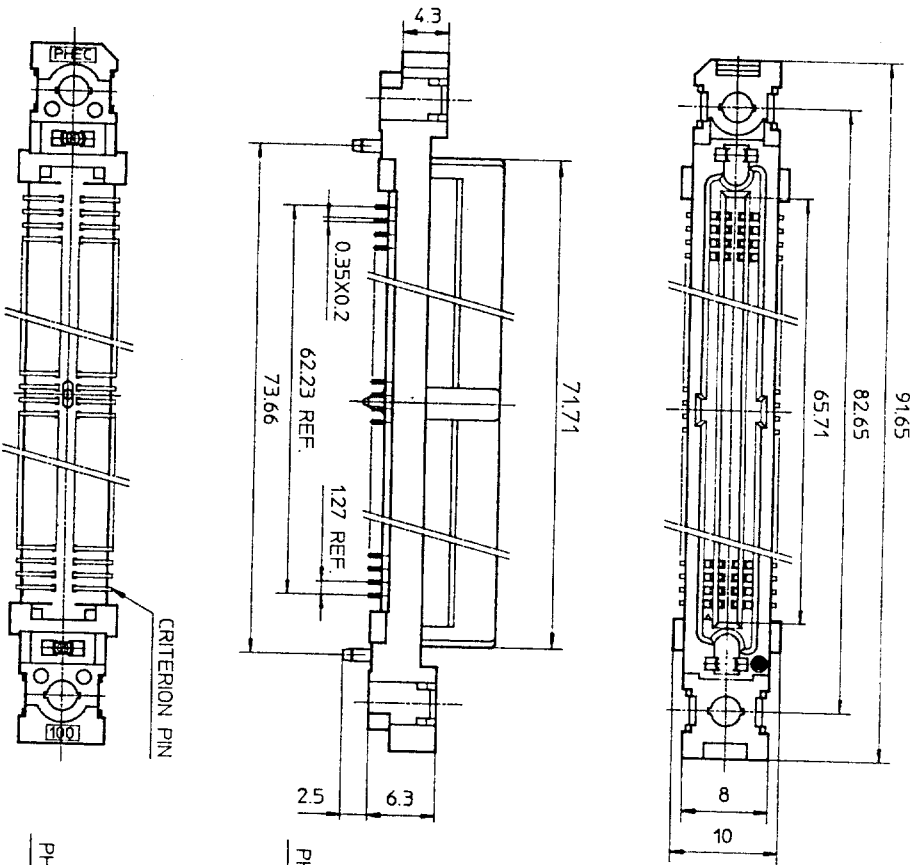
REV	DATE	DESCRIPTION	CHKD.
4	'92 8-14	WRONG CONTACT DIM. CORRECTED 100 POSITIONS OF DELETED.	M.S.
3	'92 1-8	DIM. CHANGED.	JK
2	'90 6-8	EC7866	JK
1	'90 4-20	VARIATION ADDED.	JK

SCALE : 1/2  
DIM IN : MM  
MATERIAL :

DESIGNED :  
DRAWN : M. Osa  
CHECKED : A. Eb  
APPROVED : J. Kobayashi  
DATE : Mar. 8, 1990

CAT. NO. : PHEC60RT-S21\_  
DRAWING NO. : JSC 90739  
REV : 4





MATERIAL  
 INSULATOR : PPS RESIN GLASS REINFORCED (UL94V-0)  
 COLOR : BLACK  
 CONTACT : PHOSPHOR BRONZE  
 SCREW NUT : STAINLESS  
 NO. OF CONTACTS : 50/ROW X 2 ROWS (MATING SIDE)

CONTACT PLATING TABLE  
 [THICKNESS : μm]

CONTACT AREA	REMAINDER
GOLD 0.25 MIN. OVER NICKEL 3Z	SOLDER OVER NICKEL

TOLERANCES  
 UNLESS OTHERWISE SPECIFIED : ±0.3

PRINTED CIRCUIT CONNECTOR  
 SURFACE MOUNT TYPE

CAT. NO. PHEC100RT-S21

DRAWING NO. JSC 91839 REV. 0

**BURNDY**  
 JAPAN, Ltd.

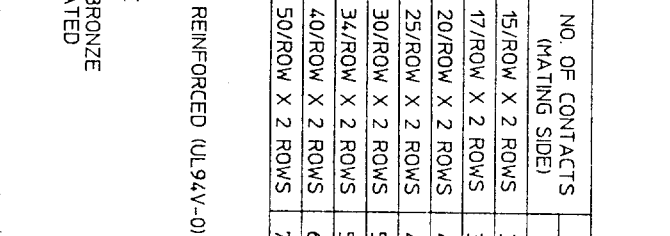
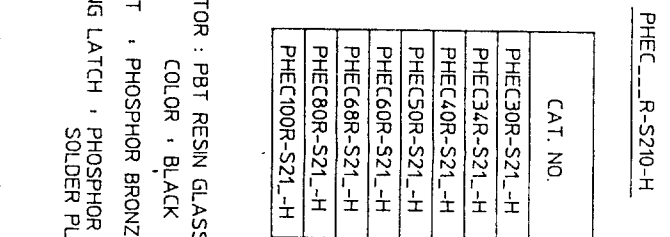
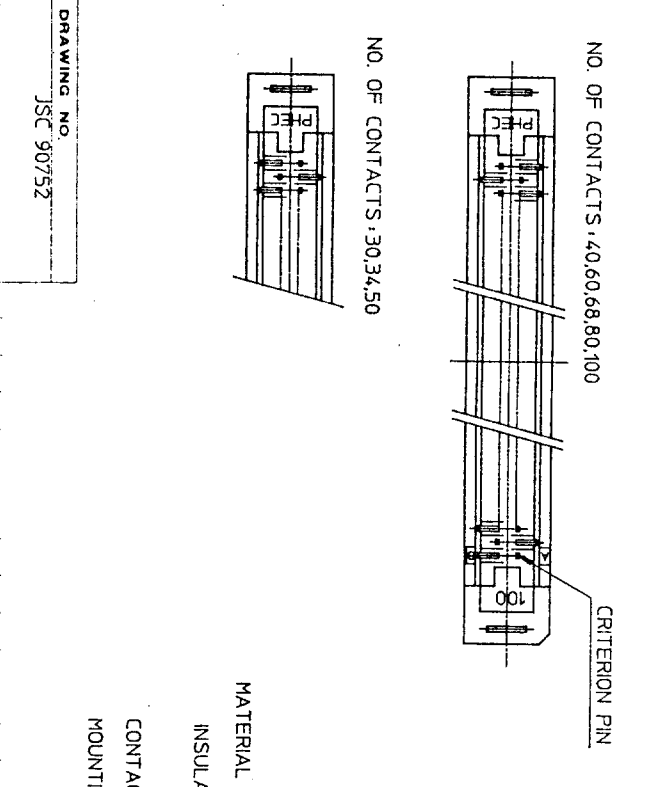
DESIGNED  
 DRAWN  
 CHECKED  
 APPROVED  
 DATE Aug. 11, 1992

SCALE  
 DIM. IN  
 MATERIAL

REV.	DATE	DESCRIPTION	CHKD.

REFERENCE

DRAWING NO.  
 JSC 91839



CAT. NO.	NO. OF CONTACTS (MATING SIDE)	DIMENSIONS				
		A	B	C	D	E
PHEC30R-S21-H	15/ROW X 2 ROWS	34.55	31.75	27.26	21.26	17.78
PHEC34R-S21-H	17/ROW X 2 ROWS	37.09	34.29	29.8	23.8	20.32
PHEC40R-S21-H	20/ROW X 2 ROWS	40.9	38.1	33.61	27.61	24.13
PHEC50R-S21-H	25/ROW X 2 ROWS	47.25	44.45	39.96	33.96	30.48
PHEC60R-S21-H	30/ROW X 2 ROWS	53.6	50.8	46.31	40.31	36.83
PHEC68R-S21-H	34/ROW X 2 ROWS	58.68	55.88	51.39	45.39	41.91
PHEC80R-S21-H	40/ROW X 2 ROWS	66.3	63.5	59.01	53.01	49.53
PHEC100R-S21-H	50/ROW X 2 ROWS	79.0	76.2	71.71	65.71	62.23

REV	DATE	DESCRIPTION	CKD.
5	'93 6-22	100 POSITIONS ADDED.	M.O
4	'93 2-1	WRONG CONTACT DIM. CORRECTED.	S.O
3	'92 8-11	100,120 POSITIONS DELETED. 30,34,50,68 POSITIONS ADDED.	S.O
2	'90 5-30	DIM. CHANGED (36.61 → 33.61)	S.K
1	'90 5-14	EC 7866	HE

DESIGNED	
DRAWN	M. Oba
CHECKED	
APPROVED	J. Ogasawara
DATE	Mar. 24, 1990

CAT. NO.	PHEC__R-S21_-H
DRAWING NO.	JSC 90752
REV	5

RECOMMENDED PC BOARD  
THICKNESS: 1.6 ± 0.2  
HOLE PATTERN (COMPONENT SIDE)

NO. OF CONTACTS: 40,60,68,80,100

NOTE: THROUGH-HOLES FOR MOUNTING LATCHES ALSO SHOULD BE PLATED.

TOLERANCES UNLESS OTHERWISE SPECIFIED: ± 0.3

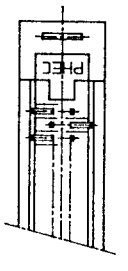
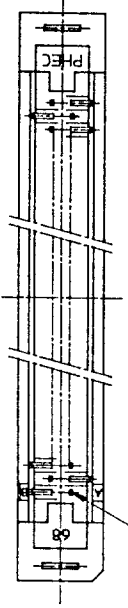
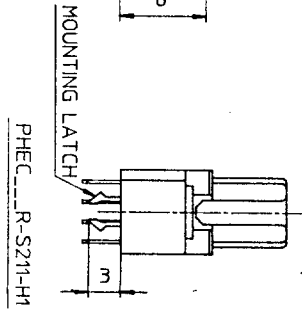
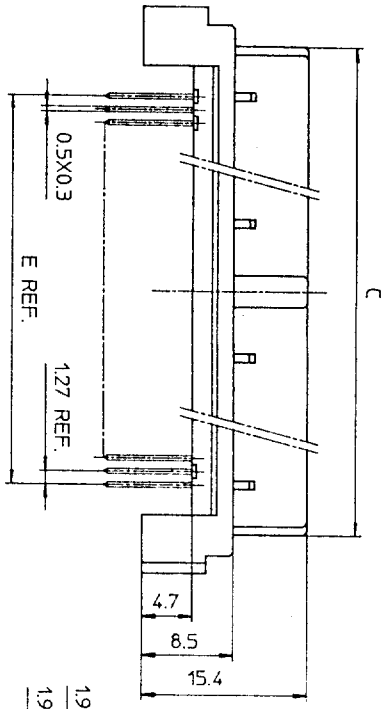
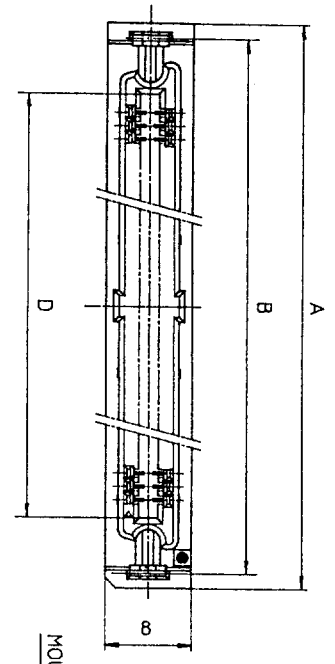
INSULATOR: PBT RESIN GLASS REINFORCED (UL94V-0)  
COLOR: BLACK  
CONTACT: PHOSPHOR BRONZE  
MOUNTING LATCH: PHOSPHOR BRONZE  
SOLDER PLATED

CONTACT PLATING TABLE  
(THICKNESS: μm)

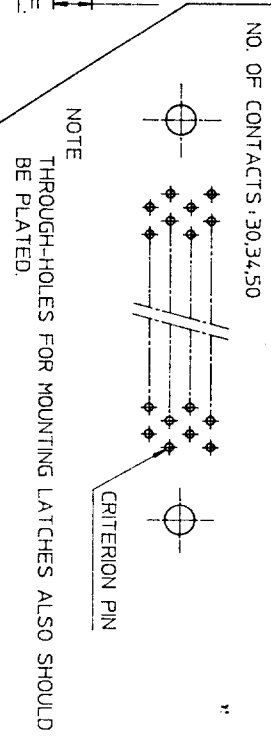
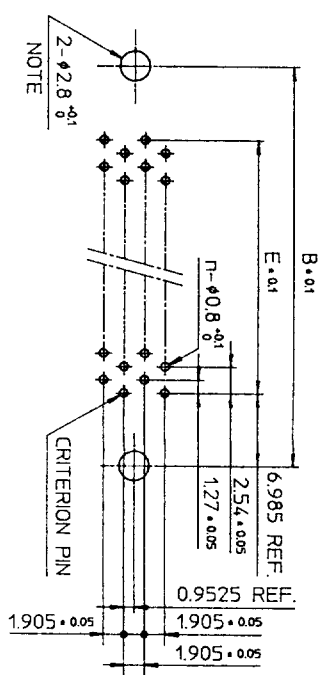
CONTACT AREA	REMAINDER
GOLD 0.25 MIN. OVER NICKEL 3.2	SOLDER OVER NICKEL

PRINTED CIRCUIT CONNECTOR  
HIGH STAND OFF TYPE

**BURNDY JAPAN, Ltd.**



RECOMMENDED PC BOARD  
THICKNESS: 1.6 ± 0.2  
HOLE PATTERN (COMPONENT SIDE)  
NO. OF CONTACTS: 40, 60, 68



CAT. NO.	NO. OF CONTACTS (MATING SIDE)	DIMENSIONS				
		A	B	C	D	E
PHEC30R-S21-H1	15/ROW X 2 ROWS	34.55	31.75	27.26	21.26	17.78
PHEC34R-S21-H1	17/ROW X 2 ROWS	37.09	34.29	29.8	23.8	20.32
PHEC40R-S21-H1	20/ROW X 2 ROWS	40.9	38.1	33.61	27.61	24.13
PHEC50R-S21-H1	25/ROW X 2 ROWS	47.25	44.45	39.96	33.96	30.48
PHEC60R-S21-H1	30/ROW X 2 ROWS	53.6	50.8	46.31	40.31	36.83
PHEC68R-S21-H1	34/ROW X 2 ROWS	58.68	55.88	51.39	45.39	41.91

TOLERANCES  
UNLESS OTHERWISE SPECIFIED: ±0.3

MATERIAL

INSULATOR: PBT RESIN GLASS REINFORCED (UL94V-0)  
COLOR: BLACK

CONTACT: PHOSPHOR BRONZE  
MOUNTING LATCH: PHOSPHOR BRONZE  
SOLDER PLATED

CONTACT PLATING TABLE

CONTACT AREA	REMAINDER
GOLD 0.25 MIN. OVER NICKEL 3.2	SOLDER OVER NICKEL

DRAWING NO. JSC 91840

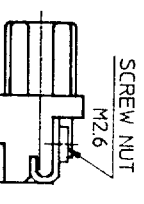
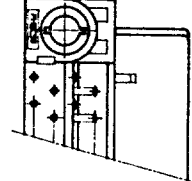
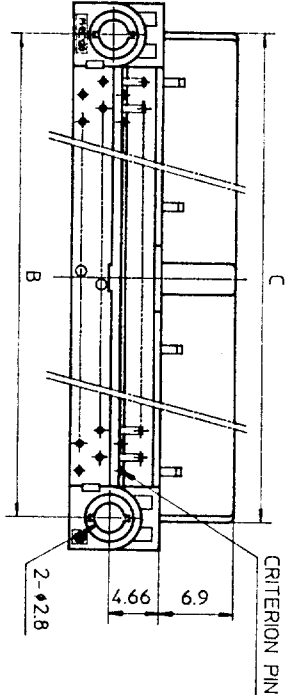
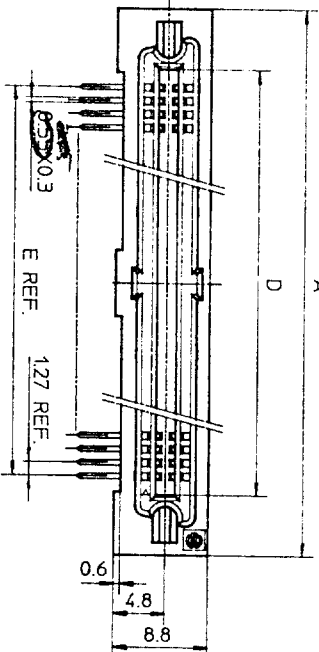
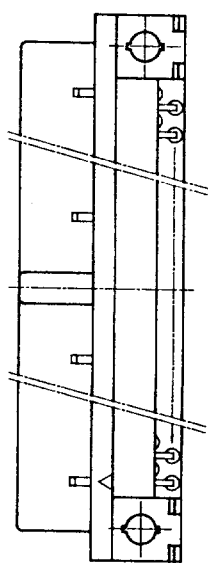
PRINTED CIRCUIT CONNECTOR  
HIGH STAND OFF TYPE  
CAT. NO. PHEC\_\_\_R-S21-H1  
DRAWING NO. JSC 91840  
REV. 1

**BURNDY**  
JAPAN, Ltd.

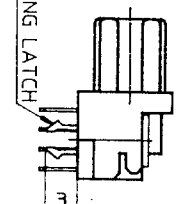
DESIGNED  
DRAWN *M. Oba*  
CHECKED A. matsuo  
APPROVED *S. Ito*  
DATE Aug. 17, 1992

SCALE  
DIM IN mm  
MATERIAL

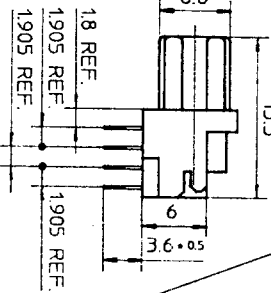
REV. DATE	DESCRIPTION	CKD
1 93	WRONG CONTACT DIM. CORRECTED.	
2-1		



SCREW NUT  
M2.6



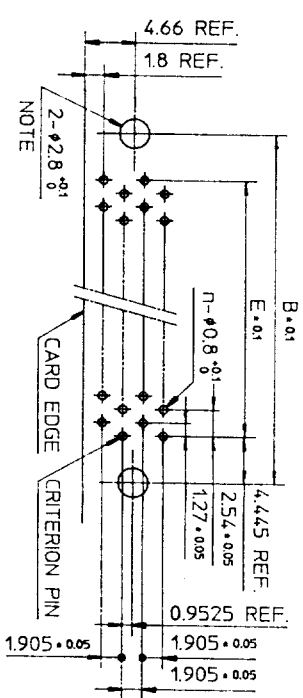
MOUNTING LATCH  
PHEC\_\_R-R211



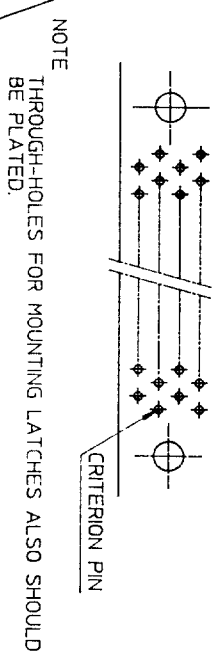
CRITERION PIN  
PHEC\_\_R-R210

RECOMMENDED P.C. BOARD  
THICKNESS: 1.6<sup>±0.2</sup>  
HOLE PATTERN (COMPONENT SIDE)  
NO. OF CONTACTS: 40, 60, 68, 80,  
100, 120

n : NO. OF CONTACTS



NO. OF CONTACTS: 30, 34, 50



NOTE  
THROUGH-HOLES FOR MOUNTING LATCHES ALSO SHOULD  
BE PLATED.

TOLERANCES  
UNLESS OTHERWISE SPECIFIED: ±0.3

CAT. NO.	NO. OF CONTACTS (MATING SIDE)	DIMENSIONS				
		A	B	C	D	E
PHEC30R-R21	15/ROW X 2 ROWS	32.67	26.67	27.26	21.26	17.78
PHEC34R-R21	17/ROW X 2 ROWS	35.21	29.21	29.8	23.8	20.32
PHEC40R-R21	20/ROW X 2 ROWS	39.02	33.02	33.61	27.61	24.13
PHEC50R-R21	25/ROW X 2 ROWS	45.37	39.37	39.96	33.96	30.48
PHEC60R-R21	30/ROW X 2 ROWS	51.72	45.72	46.31	40.31	36.83
PHEC68R-R21	34/ROW X 2 ROWS	56.8	50.8	51.39	45.39	41.91
PHEC80R-R21	40/ROW X 2 ROWS	64.42	58.42	59.01	53.01	49.53
PHEC100R-R21	50/ROW X 2 ROWS	77.12	71.12	71.71	65.71	62.23
PHEC120R-R21	60/ROW X 2 ROWS	89.82	83.82	84.41	78.41	74.93

CONTACT PLATING TABLE  
(THICKNESS: μm)

CONTACT AREA	REMAINDER
GOLD 0.25 MIN. OVER NICKEL 3.2 OVER NICKEL	SOLDER

NO. OF CONTACTS: 30, 34, 50

MATERIAL

BODY : PBT RESIN GLASS REINFORCED (UL94V-0)  
LOCATOR COLOR : BLACK  
CONTACT : PHOSPHOR BRONZE  
MOUNTING LATCH : PHOSPHOR BRONZE  
SCREW NUT : STEEL  
NICKEL PLATED

DRAWING NO.  
JSC 90738

PRINTED CIRCUIT CONNECTOR  
CAT. NO. PHEC\_\_R-R21\_  
DRAWING NO. JSC 90738  
REV. 3  
**BURNDY JAPAN, Ltd.**

DESIGNED  
DRAWN *M. Oba*  
CHECKED *A. Oba*  
APPROVED *T. Ogasawara*  
DATE Mar. 8, 1990

SCALE  
DIM. IN mm  
MATERIAL

REV.	DATE	DESCRIPTION	CKD
3	92-8-11	30, 34, 50, 68 POSITIONS ADDED.	<i>M. Oba</i>
2	90-6-8	EC 7866	<i>No</i>
1	90-4-20	EC 7837	<i>No</i>