



SK-FM4-176L-S6E2CC

FM4 Family Quick Start Guide

Doc. No. 002-09737 Rev. *B

Cypress Semiconductor
198 Champion Court
San Jose, CA 95134-1709
<http://www.cypress.com>

Copyrights

© Cypress Semiconductor Corporation, 2015-2017. This document is the property of Cypress Semiconductor Corporation and its subsidiaries, including Spansion LLC (“Cypress”). This document, including any software or firmware included or referenced in this document (“Software”), is owned by Cypress under the intellectual property laws and treaties of the United States and other countries worldwide. Cypress reserves all rights under such laws and treaties and does not, except as specifically stated in this paragraph, grant any license under its patents, copyrights, trademarks, or other intellectual property rights. If the Software is not accompanied by a license agreement and you do not otherwise have a written agreement with Cypress governing the use of the Software, then Cypress hereby grants you a personal, non-exclusive, nontransferable license (without the right to sublicense) (1) under its copyright rights in the Software (a) for Software provided in source code form, to modify and reproduce the Software solely for use with Cypress hardware products, only internally within your organization, and (b) to distribute the Software in binary code form externally to end users (either directly or indirectly through resellers and distributors), solely for use on Cypress hardware product units, and (2) under those claims of Cypress’s patents that are infringed by the Software (as provided by Cypress, unmodified) to make, use, distribute, and import the Software solely for use with Cypress hardware products. Any other use, reproduction, modification, translation, or compilation of the Software is prohibited.

TO THE EXTENT PERMITTED BY APPLICABLE LAW, CYPRESS MAKES NO WARRANTY OF ANY KIND, EXPRESS OR IMPLIED, WITH REGARD TO THIS DOCUMENT OR ANY SOFTWARE OR ACCOMPANYING HARDWARE, INCLUDING, BUT NOT LIMITED TO, THE IMPLIED WARRANTIES OF MERCHANTABILITY AND FITNESS FOR A PARTICULAR PURPOSE. To the extent permitted by applicable law, Cypress reserves the right to make changes to this document without further notice. Cypress does not assume any liability arising out of the application or use of any product or circuit described in this document. Any information provided in this document, including any sample design information or programming code, is provided only for reference purposes. It is the responsibility of the user of this document to properly design, program, and test the functionality and safety of any application made of this information and any resulting product. Cypress products are not designed, intended, or authorized for use as critical components in systems designed or intended for the operation of weapons, weapons systems, nuclear installations, life-support devices or systems, other medical devices or systems (including resuscitation equipment and surgical implants), pollution control or hazardous substances management, or other uses where the failure of the device or system could cause personal injury, death, or property damage (“Unintended Uses”). A critical component is any component of a device or system whose failure to perform can be reasonably expected to cause the failure of the device or system, or to affect its safety or effectiveness. Cypress is not liable, in whole or in part, and you shall and hereby do release Cypress from any claim, damage, or other liability arising from or related to all Unintended Uses of Cypress products. You shall indemnify and hold Cypress harmless from and against all claims, costs, damages, and other liabilities, including claims for personal injury or death, arising from or related to any Unintended Uses of Cypress products.

Cypress, the Cypress logo, Spansion, the Spansion logo, and combinations thereof, WICED, PSoC, CapSense, EZ-USB, F-RAM, and Traveo are trademarks or registered trademarks of Cypress in the United States and other countries. For a more complete list of Cypress trademarks, visit cypress.com. Other names and brands may be claimed as property of their respective owners.

Contents

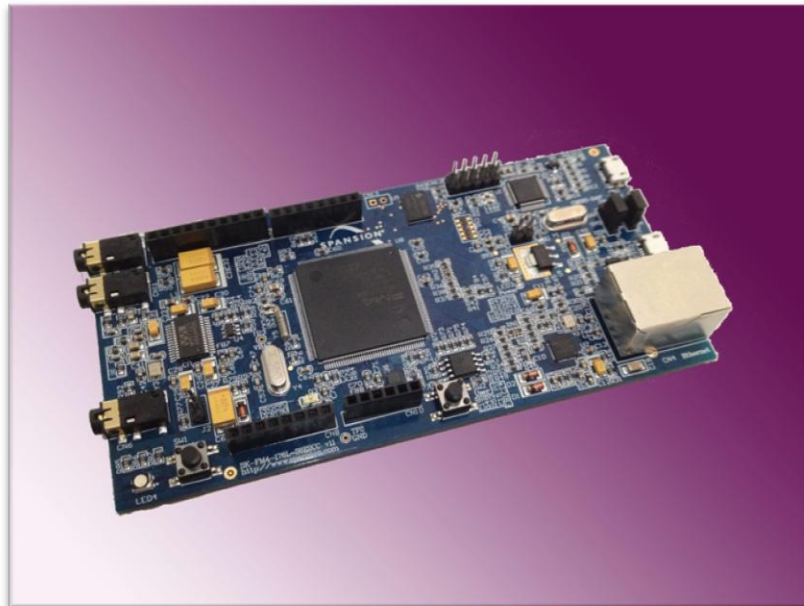


1. Introduction.....	4
2. Windows USB Driver Installation	6
3. Install the Virtual Communication Port.....	7
4. Powering SK-FM4-176I-S6E2CC Starter Kit.....	8
5. Run PCB Board Test Demonstration	9
6. Additional Resources.....	12
Revision History	13
Document Revision History	13

1. Introduction



SK-FM4-176L-S6E2CC Starter Kit provides a low-cost solution to quickly start development on an ARM[®] Cortex[®]-M4 microcontroller. The board features peripheral devices to demonstrate the features of the FM4 S6E2CCA microcontroller. It also has an Arduino-compatible interface to connect with shields, making application development options limitless. The FM4 S6E2CCA microcontroller comes pre-programmed with an interactive application to test all of the on-board features using a virtual communication port to send message prompts, input test parameters, and output test results. This document guides users on how to connect to the board and run the featured demonstration in less than 10 minutes.



- Cypress FM4 Family S6E2CCA MCU
- CMSIS-DAP JTAG adapter
- Ethernet RJ45 (IEEE802.3)
- USB device interface
- 32Mbit Quad SPI flash memory
- 16Mbit external PSRAM memory
- Stereo Codec
- Voice Enabled Controller

- RGB LED
- Acceleration Sensor
- Phototransistor
- User Button
- Arduino-compatible interface
- 10-pin JTAG interface
- (*SK-FM4-176L-S6E2CCA-ETH, *SK-FM4-176L-S6E2CCA)

Setup Requirements:

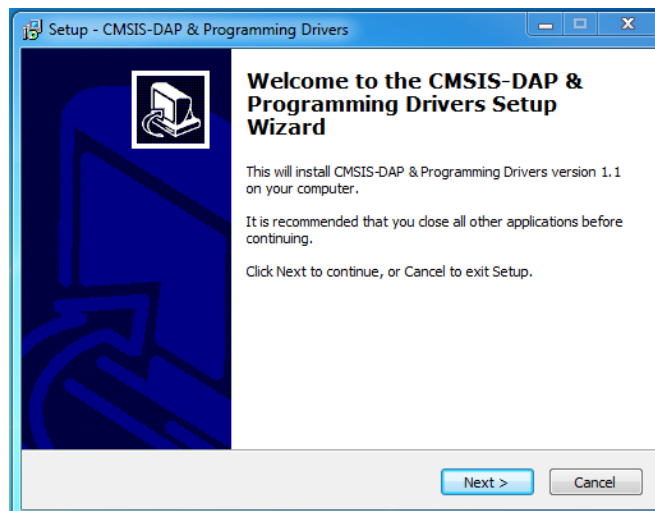
- PC with USB interface, Windows OS 7, or later
- SK-FM4-176L-S6E2CCA starter kit with USB cable (A/micro-B)
- Download Complete Driver, Documentation, Software, & Tools Package
- SK-FM4-176L-S6E2CCA_CDv1.1

2. Windows USB Driver Installation

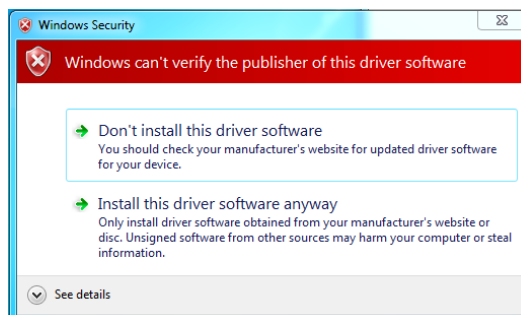


Windows USB drivers that are specific to the [SK-FM4-176L-S6E2CCA](#) starter kit need to be installed to run the virtual communication port. Follow these instructions to install the Windows USB drivers.

1. In the downloaded SK-FM4-176L-S6E2CCA_CDvnn* (*version number) folder browse to /drivers/driverinstaller.exe and run the application. Click the next prompt.



2. During the installation, a warning may appear that the publisher cannot be verified, depending on Windows security settings. Select, 'install this driver software anyway.' Two drivers are being installed, cmsis-dap and usbdirect. The Windows security window will appear twice, and 'Install this driver software anyway' will need to be selected each time.



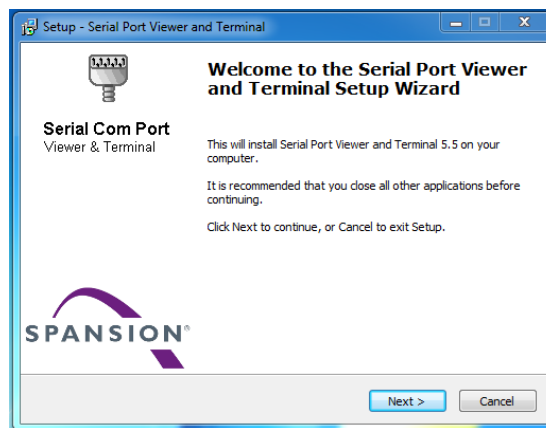
3. When installation is complete, click the finish button when prompted.

3. Install the Virtual Communication Port

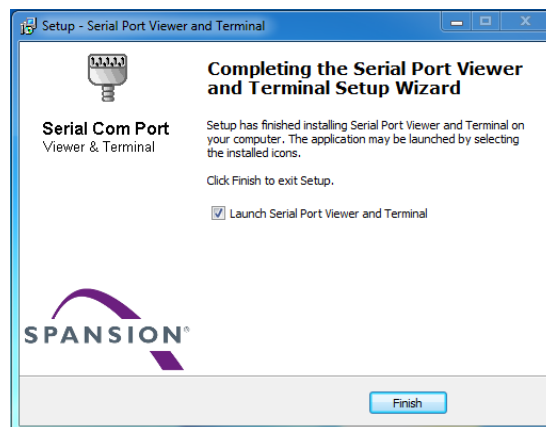


The SK-FM4-176L-S6E2CCA_CDvnn* download includes a serial communication terminal, Cypress Serial Port Viewer and Terminal, for the communication interface. Follow these instructions to install.

1. Open the SK-FM4-176L-S6E2CCA_CDvnn folder and browse to /tools/serial port viewer/setup.exe and run the application. Click the next button.



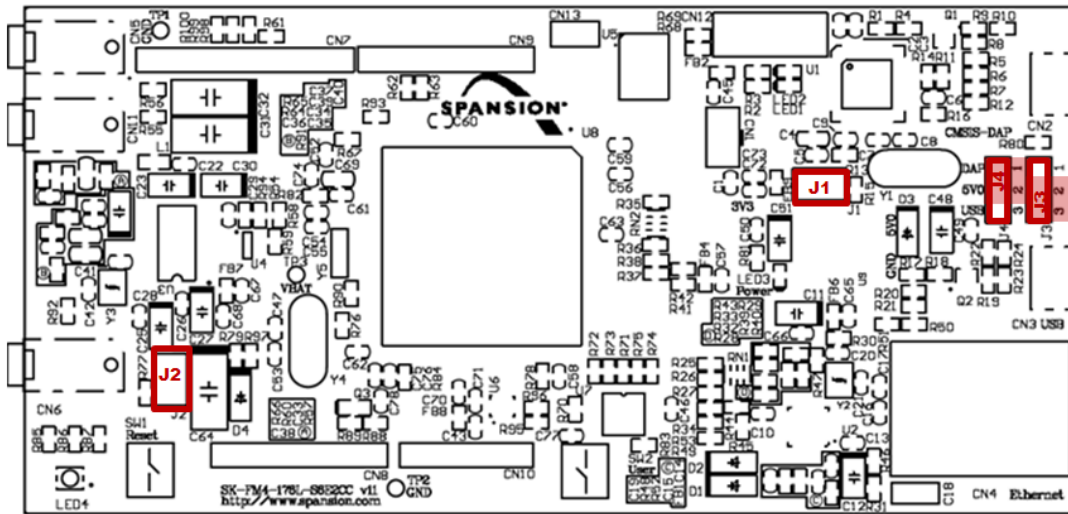
2. Review the license agreement, click I accept the agreement, and the next button.
3. Select a destination for the application or leave the default location, and click next.
4. Select a destination for the application shortcut or leave it in default location, and click next.
5. Select additional icon options and click next.
6. Select install to start the installation.
7. Check the box next to Launch Serial Port Viewer and Terminal and click finish.



4. Powering SK-FM4-176L-S6E2CC Starter Kit



There are two options for powering the SK-FM4-176L-S6E2CCA starter kit. This document will use the USB connection at either CN2. Connect the USB cable to CN2 to power the board. The green power LED3 will illuminate. If it does not, ensure that jumper J4 is in 1-2 position as shown below.

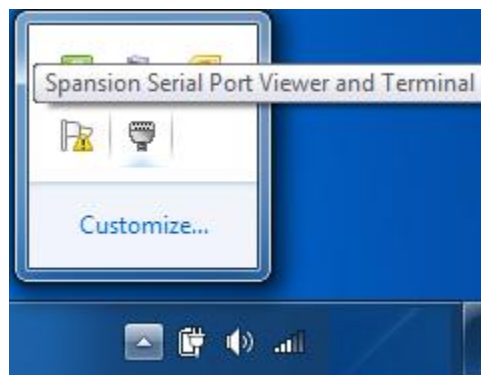


5. Run PCB Board Test Demonstration

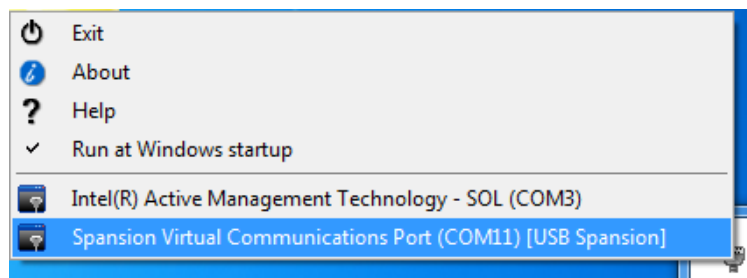


The pre-programmed demonstration tests the on-board features for proper functionality. The application will already be running in the S6E2CCA microcontroller when the SK-FM4-176L-S6E2CCA starter kit is powered on. Follow these instructions to connect the virtual communication port created by test application to the Cypress Serial Port Viewer and Terminal.

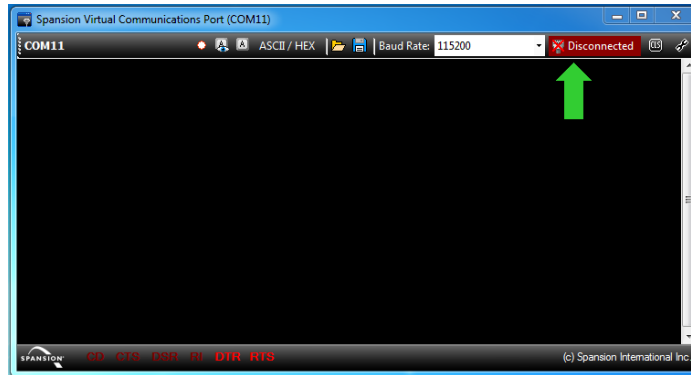
1. Open the C Cypress Serial Port Viewer and Terminal by selecting the icon in the task menu or desktop short cut.



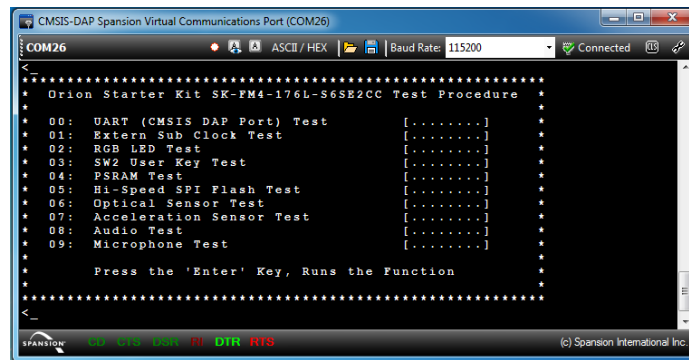
2. Choose the Cypress Virtual Communications Port.



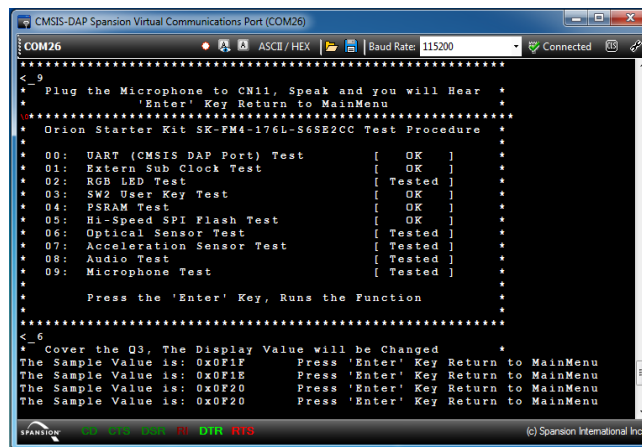
- Set the baud rate to 115200 in the drop down menu and click disconnected above the green arrow to connect.



- Once the terminal is connected, press enter on PC keyboard and the welcome message will display.



- To run each of the tests enter the number next to the test description and follow the prompts. For example: 6<enter> will run the Optical Sensor Test. The application will output the value of the sensor and loop until the enter key on the PC keyboard is pressed.



6. To run the Audio test, CN5 needs to have a headphone set connected.
7. To run the microphone test, leave the headphones connected to CN5 and connect a microphone at CN11. Any noise into the microphone will be repeated in the headphones.
8. If any issue or failure is encountered, ensure all jumpers are in default position as listed:
 - J1 open
 - J2 open
 - J3 2-3 position
 - J4 1-2 position

6. Additional Resources



The S6E2CCAMCU with ARM® Cortex®-M4 core is part of Cypress's FM4 Family of microcontrollers. The SK-FM4-176L-S6E2CCA_CDvnnndownload folder includes additional resources for users to easily and quickly develop their own applications on Cypress's FM4 Family of microcontrollers:

- User Guide SK-FM4-176L-S6E2CCA with flash programming and IDE details
- Subfolder .\documentation
 - Data Sheet and Peripheral Manuals for the S6E2CC series
- Subfolder .\drivers
 - Windows USB drivers to connect to Cypress starter kit
- Subfolder .\PDFXChange
 - Free PDF viewer that allows opening external links like the ones that are embedded in the Quick Start Guide and the User Guide
- Subfolder .\sw-examples
 - Template project and some software project examples with header files
- Subfolder .\tools
 - cmsisdap_fw_update
Latest firmware of the on-board JTAG debugger
 - PCWFM3
Flash MCU Programmer – Graphical interface to program flash through UART through on-chip ROM UART boot loader.
 - Serial port viewer
Cypress Serial Port Viewer and Terminal – Serial communication terminal to be used for the UART communication interface
 - USBDIRECT
Flash USB Direct Programmer – Graphical interface to program flash through USB through on-chip ROM USB boot loader.
 - SK-176-s6e2ccTestCode-V11.srec
 - Copy of original production test software if the starter kit needs to be restored to original production state.

For further information on FM4-176L-S6E2CC-ETH - ARM® Cortex®-M4 MCU Starter Kit, visit our website:

[FM4-176L-S6E2CC-ETH - ARM® Cortex®-M4 MCU Starter Kit with Ethernet and USB Host](#)

Revision History



Document Revision History

Document Title: SK-FM4-176L-S6E2CC FM4 Family Quick Start Guide			
Document Number: 002-09737			
Revision	Issue Date	Origin of Change	Description of Change
**	07/14/2015	JHHO	Initial release
*A	06/14/2016	JHHO	Migrated Spansion Guide from MCU-176L-S6E2CC to Cypress format
*B	06/02/2017	AESATMP9	Updated logo and copyright.