

Monolithic crystal filter

MQF45.0-1500/17



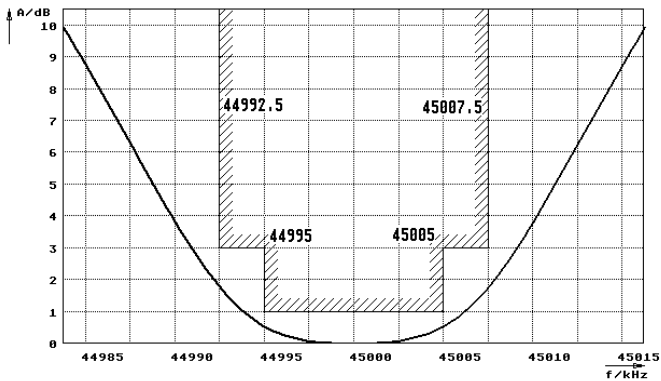
Application

- 2 pol filter
- i.f.- filter
- use in mobile and stationary transceivers

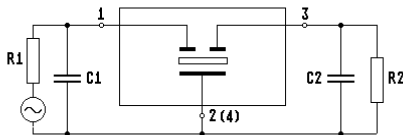
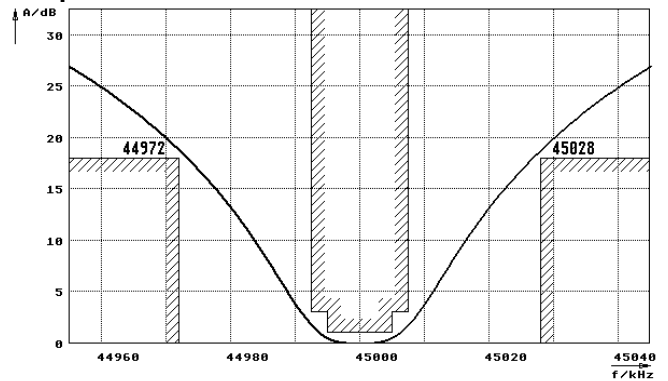
Limiting values		Unit	Value
Nominal frequency	f_0	MHz	45.0
Insertion loss		dB	< 2.0
Pass band at 3.0dB		kHz	$\pm > 7.5$
Ripple in pass band	$f_0 \pm 5$ kHz	dB	< 1.0
Stop band attenuation	$f_0 \pm 28$ kHz	dB	> 18
	$f_0 \pm 500$ kHz	dB	> 40
Alternate attenuation	$f_0 - 910$ kHz	dB	> 75
Spurious responses		dB	> 4
Terminating impedance Z			
R1 C1		Ohm/pF	200 1
R2 C2		Ohm/pF	200 1
Operating temp. range		°C	-25... +70
Storage temp. range		°C	-45... +85
Environment conditions			according to CF001

Characteristics MQF45.0-1500/17

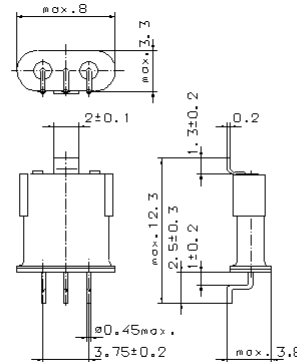
Pass band



Stop band



- Pin connections:
- 1 Input
 - 2 Ground
 - 3 Output
 - 4 Ground



GH9S1

RoHS compliant