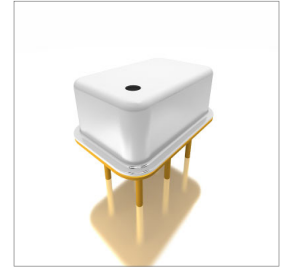


Features
<ul style="list-style-type: none"> Frequencies from 70MHz to 140MHz Low amplitude ripple RoHS compliance Electrostatic sensitive device Compatible with EPCOS, TDK, etc

Applications
<ul style="list-style-type: none"> Industry Wireless Communication RF Filters for Cellular Phone



Part Numbering Guide

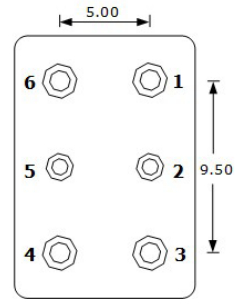
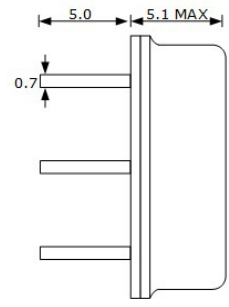
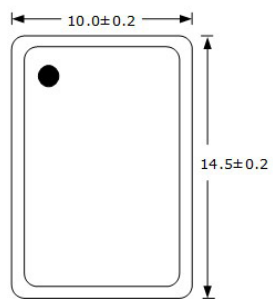
S FL SI 14F10A 6A 29A - 140M



* Where letters denote decimal location (A=.0, B=.1, C=.2, etc.); e.g. B5=0.15, 3A5=3.05, 9A=9.0

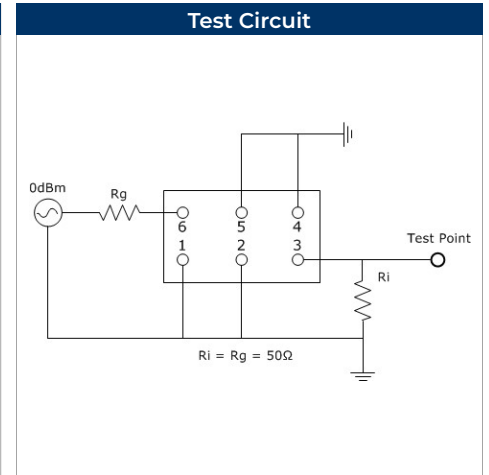
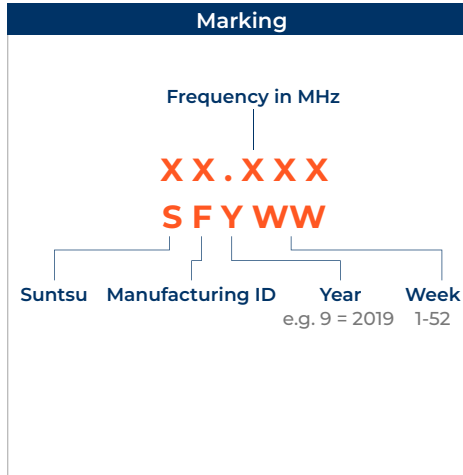
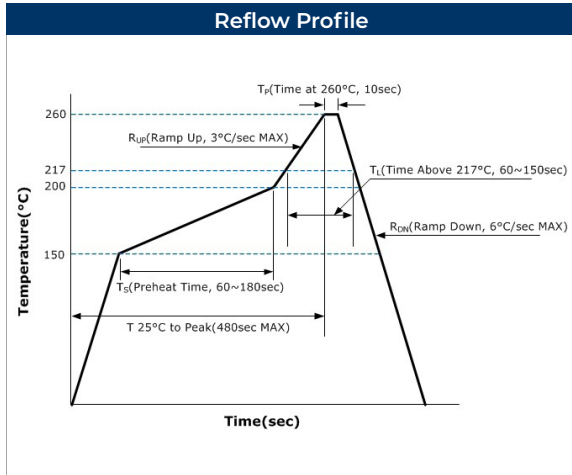
Electrical Parameters (at 25 °C)	Units	Minimum	Typical	Maximum	Remarks
Center Frequency	MHz	70		140	See part number reference (page 2).
Passband width	MHz	6		29	See part number reference (page 2).
Insertion Loss	dB	20		29	See part number reference (page 2).
DC voltage(VDC)	V		3.0		
Operating Temperature	°C	-40		85	
Storage Temperature	°C	-55		125	
Maximum Input Power	dBm		10		
Terminating Source Impedance	Ω		50		
Terminating Load Impedance	Ω		50		

Outline Drawing



PIN #	Function
1	INPUT
4	OUTPUT
2,3,5,6	GROUND

All dimensions are in millimeters (mm) unless otherwise noted. Drawings are not to scale.



Environmental & Mechanical Specifications	
High Temperature Storage	85°C (GRADE3), 1000h, unpowered
Temperature Cycling	-40°C / 85°C (GRADE3), 1000 cycles. Dwell time :15min. Transition time: < 20 s
Humidity Test	85°C/85% relative humidity, 1000h voltage acc. Data sheet [here: 0 V]
Operational Life	Nominal RF power and maximum temperature acc. to data sheet. 85°C, 1000h
External Visual	Inspection acc. to MIL-STD-883 meth. 2009
Physical Dimension	Verification acc. to IEC 862-1
Mechanical Shock	30000 m/s ² , 0.2ms, 1/2 Sin, 3x/direction
Vibration Test	10 to 2000 Hz, 0,75 mm ampl., 100 m/s ²
Electrostatic Discharge	HBM : 1.5kOhm, 100pF, 1pulse +/- [here : all withstand 225VHBM]
Solderability	Solderability Solder reflow method (Pb-free), 230°C -0/+5°C, 10s (after preconditioning 155°C, 16h)
Resistance to Soldering Heat	255°C -0/+5°C, 20s

Part Number Reference	Center Frequency (MHz)	Bandwidth (MHz)	Insert Loss (dB)	Package Code
SFLSI-14F10A-6A29A-140M	140	6	29	14F10A
SFLSI-14F10A-3A29A-140M	140	3	29	14F10A
SFLSI-14F10A-10A25A-140M	140	10	25	14F10A
SFLSI-14F10A-16A20F-140M	140	16	20.5	14F10A
SFLSI-14F10A-48A25A-140M	140	48	25	14F10A
SFLSI-14F10A-9I24A-140M	140	9.8	24	14F10A