

1 2 3 4 5 6 7

A

B

C

D

E

F

G

H

A

B

C

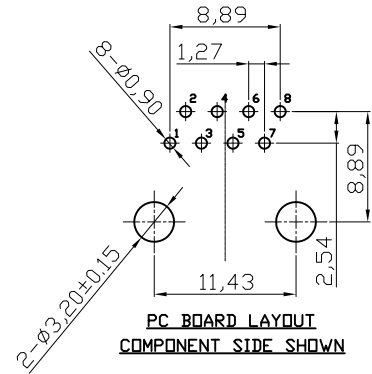
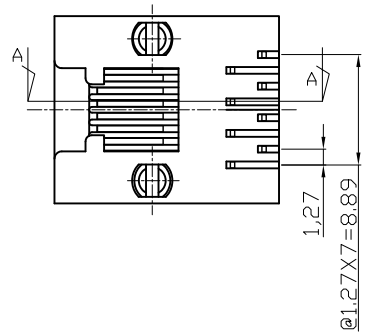
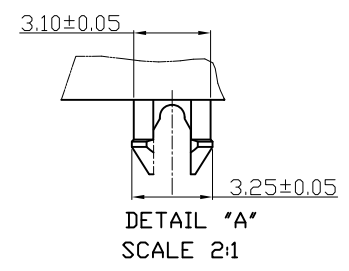
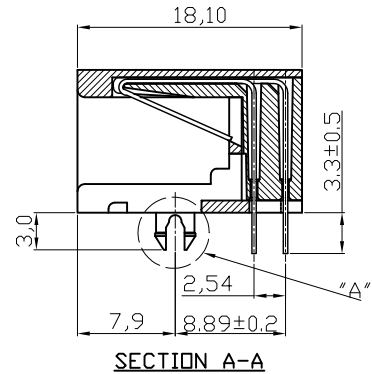
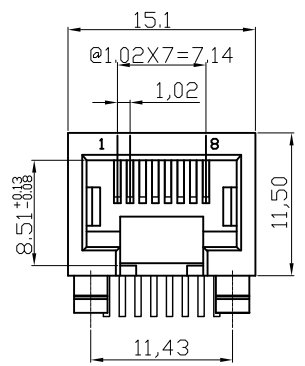
D

E

F

G

H



**ELECTRICAL:**  
 1. VOLTAGE RATING : 125 VAC.  
 2. CURRENT RATING : 1.5 AMP.  
 3. CONTACT RESISTANCE : 35 MILLIOHMS MAX.  
 4. INSULATION RESISTANCE : 1000 MEGOHMS MIN. @ 500 VDC.  
 5. DIELECTRIC STRENGTH : 1000 VAC 60Hz, 1MIN.

**MECHANICAL:**  
 1. HOUSING MATERIAL : HIGH TEMP. UL94V-0.  
 2. CONTACT MATERIAL : PHOSPHOR BRONZE t=0.35mm.  
 3. PLATING : 6U' GOLD PLATING OVER NICKEL.  
 4. OPERATING LIFE : 750 CYCLES MIN.  
 5. PCB RETENTION PRE-SOLDER : 1 LB MIN.  
 6. PCB RETENTION POST-SOLDER : 10 LBS MIN.

**ENVIRONMENTAL:**  
 1. STORAGE : -40°C TO +85°C.  
 2. OPERATION : -40°C TO +85°C.  
 MATES WITH MODULAR PLUG CONFORMING TO FCC PART 68, SUBPART F.

**RoHS compliant**

Scale	1:1					Date	Name	Customer-No.
TOLERANCE						Drawn	12.08.2008	N.Schulz
.X	±0.20					Approved	02.07.2009	Hellwig
.XX	±0.15							
.XXX	±0.10	③	Update	02.07.2009	Dean			
DIM	TOL	②	Detail A added	15.08.2008	N.Schulz			
Angle	±5°	①	Drawn	25.09.2008	N.Schulz			
		Id.	Modification	Date	Name	Replace		SHEET

ASSMANN WSW-No. **A-20042/LP**

Drawing-No. **ASS 2729 CO** rev03

1 2 3 4 5 6 7