



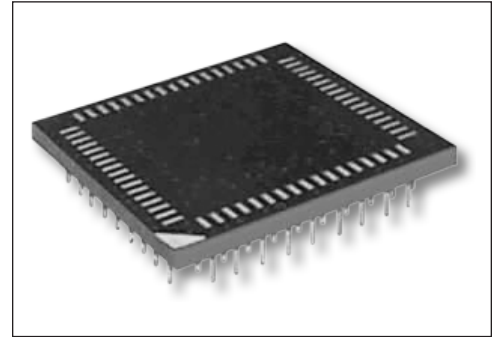
# P/N 1111903 24-Pin SOWIC-to-22-Pin 0.400" CRT DIP Adapter for 75ALS162 and Others

## FEATURES

- Convenient, cost-effective means of converting DIP-style packaging to SOWIC PC board layouts.

## GENERAL SPECIFICATIONS

- SOCKET BODY: black, UL 94V-0 glass-filled 4/6 Nylon 170°C continuous use temp.
- PCB: FR-4, 0.062 [1.58] thick
- MALE ADAPTER PIN: Brass 360 1/2-hard per UNS C36000, ASTM-B16-85
- MALE ADAPTER PIN PLATING: 200μ [5.08μ] Sn/Pb 90/10 MIL-P-81728 over 100μ [2.54μ] Ni per QQ-N-290
- COLLET CONTACT PIN BODY: Brass 360 1/2-hard per UNS C36000, ASTM B16/B16M
- COLLET PIN PLATING: 10μ [0.25μ] Au per MIL-G-45204 over 100μ [2.54μ] Ni per QQ-N-290
- 4-FINGER COLLET CONTACT: BeCu per UNS C17200, ASTM B194-08
- CONTACT PLATING: 10μ [0.25μ] min. Au per MIL-G-45204 over 50μ [1.27μ] Ni per QQ-N-290
- CONTACT CURRENT RATING: 3 amps
- OPERATING TEMPERATURE: 221°F [105°C]
- INSERTION FORCE: 180g/pin, based on a 0.018 [0.46] dia. test lead
- WITHDRAWAL FORCE: 90g/pin, based on a 0.018 [0.46] dia. test lead
- NORMAL FORCE: 140g/pin, based on a 0.018 [0.46] dia. test lead
- SOCKET ACCEPTS LEADS: 0.015-0.025 [0.38-0.64] in dia., 0.100-0.125 [2.54-3.18] long



**CUSTOMIZATION:** In addition to the standard products shown on this page, Aries specializes in custom design and production. Special materials, platings, sizes, and configurations can be furnished, depending on the quantity. **NOTE:** Aries reserves the right to change product general specifications without notice.

## ORDERING INFORMATION

**XX-354W00-X 0**

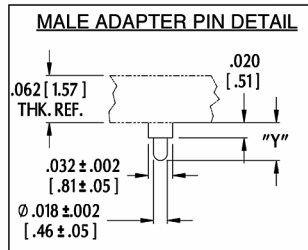
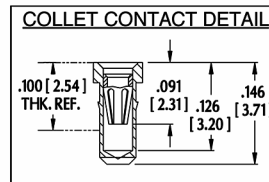
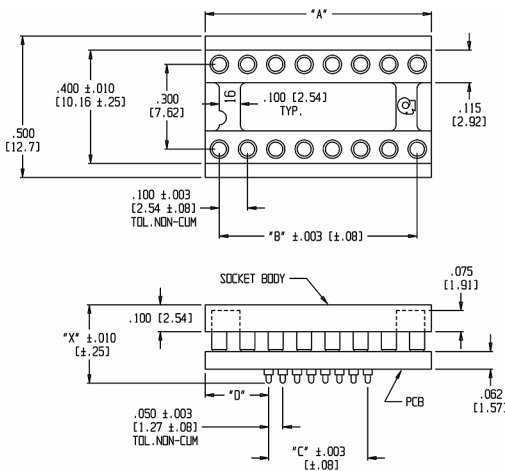
No. of Pins  
14, 16, 20, 24  
Series

Sn-plating  
Adapter Pin Option  
(see Suffix Table)  
1 = Short Adapter Pin  
2 = Long Adapter Pin

## MOUNTING CONSIDERATIONS

- SUGGESTED PCB HOLE SIZE: 0.028 ±0.002 [0.71 ±0.05] dia.

ALL DIMENSIONS: INCHES [MILLIMETERS]  
ALL TOLERANCES: ±0.005 [0.13] UNLESS OTHERWISE SPECIFIED  
CONSULT FACTORY FOR OTHER SIZES AND CONFIGURATIONS



P/N Suffix	Dim. X	Dim. Y
-10	0.265 [6.73]	0.050 [1.27]
-20	0.325 [8.26]	0.110 [2.79]

# Pins	A	B	C	D
14	0.700 [17.78]	0.600 [15.24]	0.300 [7.62]	0.200 [5.08]
16	0.800 [20.32]	0.700 [17.78]	0.350 [8.89]	0.225 [5.72]
18	0.900 [22.86]	0.800 [20.32]	0.400 [10.16]	0.250 [6.35]
20	1.000 [25.40]	0.900 [22.86]	0.450 [11.43]	0.275 [6.99]
24	1.200 [30.48]	1.100 [27.94]	0.550 [13.91]	0.325 [8.26]



Bristol, PA 19007-6810 USA  
TEL (215) 781-9956 • FAX (215) 781-9845  
WWW.ARIESELEC.COM • INFO@ARIESELEC.COM

