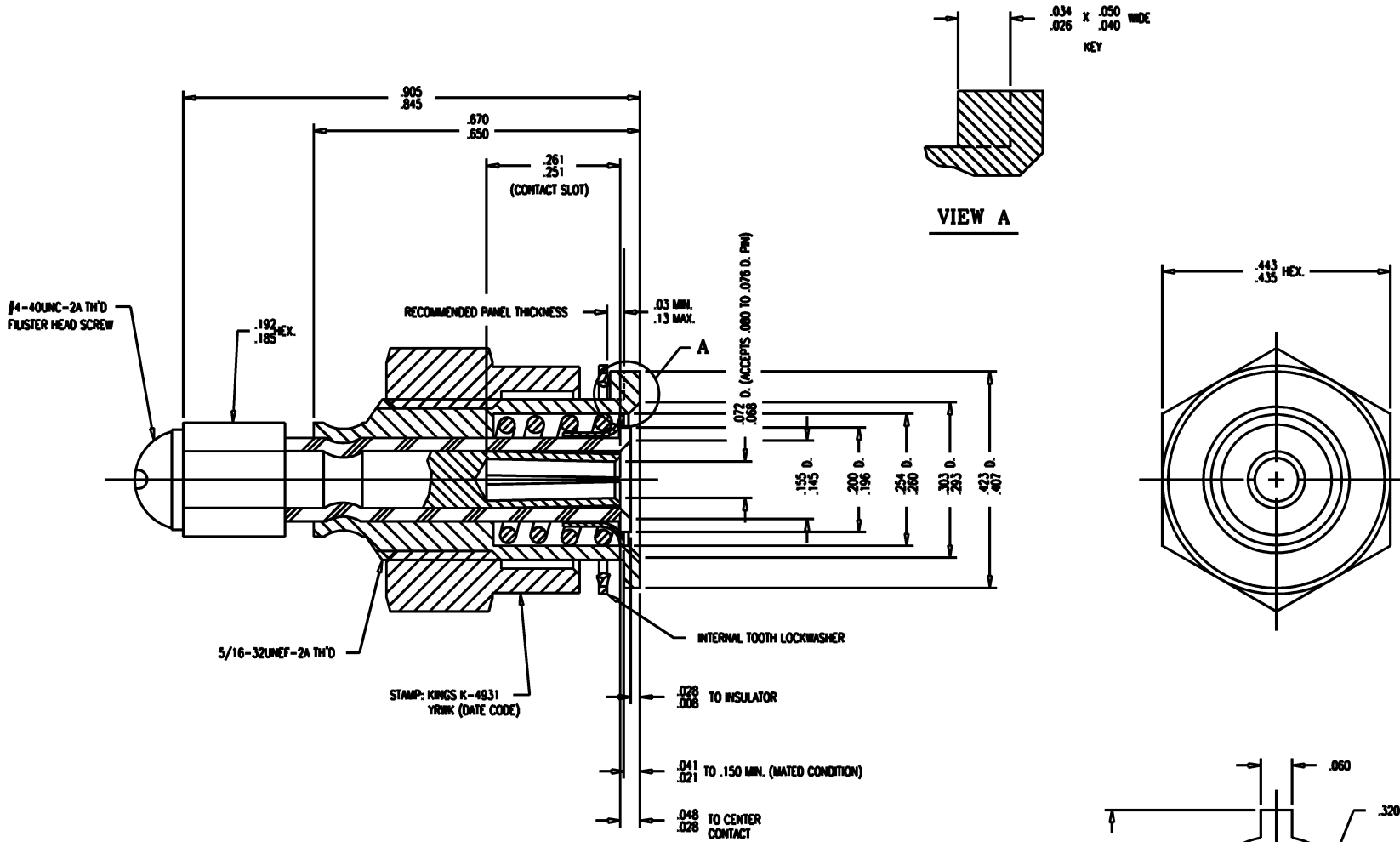


# GSD

REVISIONS	
ISSUE	CHANGES
1	ADD VIEW A & NOTES 3 & 4 VLS 05/07/92
2	ER 35626 KH 06/14/94
3	CN 36016 B VLS 12/20/94
4	CN 36281 B VLS 05/04/95
5	CN 36922 C KH 04/10/96
6	CN 38030 E TML 07/21/00



**NOTES:**

- MATERIALS:**  
INSULATORS-POLYETHYLENE, PER MIL-P-22748A  
CENTER CONTACT-BER. COP., ASTM-B-196  
LOCKWASHER-PHOSPHOR BRONZE, ASTM-B-103  
SCREW-STEEL  
ALL OTHER METAL PARTS-BRASS, ASTM-B16
- FINISHES:**  
ALL METAL PARTS-KINGS TARNISH RESISTANT NICKEL FINISH (TR-5)
- ELECTRICAL CHARACTERISTICS:**  
1500V-60Hz HI-POT  
25 MIL VOLTAGE DROP  
100 MEGOHM IMPEDANCE  
LEAKAGE NOT TO EXCEED 0.5 MIL
- MECHANICAL CHARACTERISTICS:**  
DEMATING FORCE- 3.0 LBS  
RECOMMENDED TORQUE IS 50 INCH POUNDS.
- ALL COMPONENTS TO BE ASSEMBLED AS SHOWN.

WAS: KAM1262 K4931S

K-4931

SCALE 6:1	
APPROX SURFACE AREA	
WAS: E-17013	
USED ON	
REF:	
<b>5 VOLT CONNECTOR</b>	
DESIGN KH	09/11/91
DESIGN VLS	09/11/91
APPR.	DATE

**KINGS**  
ELECTRONICS CO., INC.  
ROCK HILL, SOUTH CAROLINA 29730

K-4931

# GSD