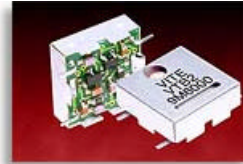


**VTB2-XXX Miniature TCXOs**

- Featuring**
- +3.0 or 5.0 Vdc Option
  - Low Cost
  - Voltage Tune Option
  - Low Profile Surface Mount
  - Reflowable

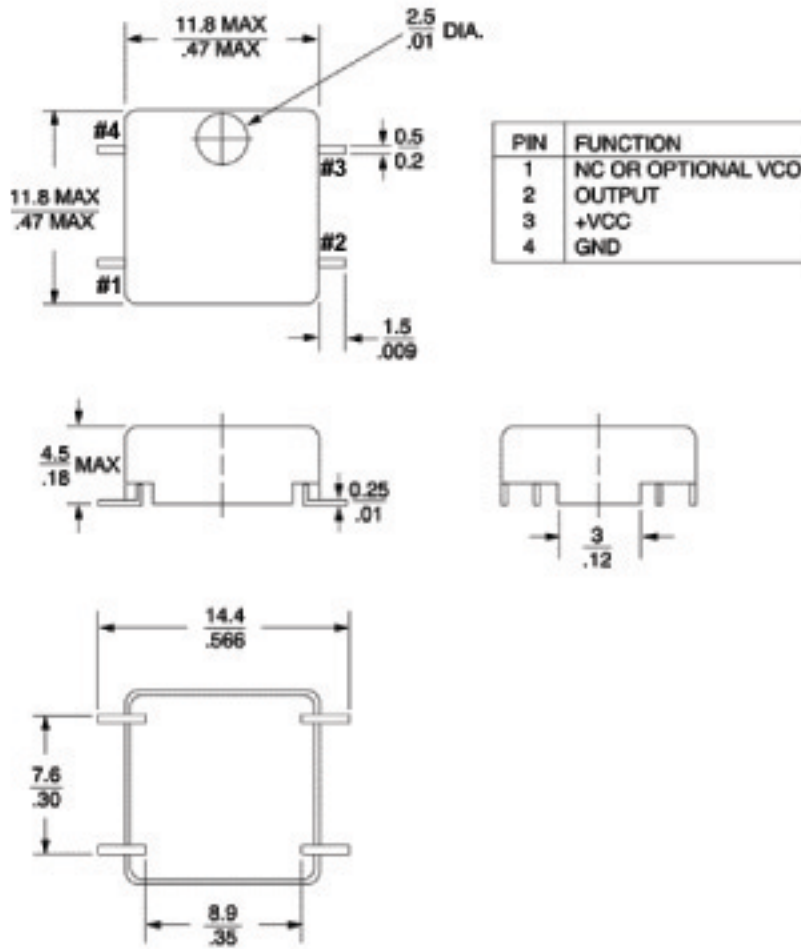



---

<b>Frequency Range</b>	9.6 to 25 MHz
<b>Stability Options</b>	<b>1</b> = ±1.0 PPM 0°C to +50°C <b>2</b> = ±2.5 PPM -30°C to +70°C <b>3</b> = ±3.5 PPM -30°C to +70°C <b>4</b> = ±5.0 PPM -40°C to +85°C
<b>Stability vs Supply</b>	<±0.3 PPM vs B+ ±5%
<b>Aging (Typical)</b>	<1.0 PPM/year at +40°C dynamic
<b>Input Voltage &amp; Current</b>	<b>A</b> = +5.0 Vdc ±5% <2 mA <b>B</b> = +3.0 Vdc ±5% <1.5 mA
<b>Output</b>	Clipped Sinewave 1.0 VP-P minimum with 5.0 Vdc input 0.7 VP-P minimum with 3.0 Vdc input
<b>Load</b>	10 K $\Omega$ // 10 pf
<b>Mechanical Trim</b>	±3.0 PPM Minimum
<b>Trim Options</b>	<b>0</b> = Mechanical Trim <b>1</b> = ±5.0 PPM minimum Voltage Control & Mechanical Trimmer
<b>Standard Packaging</b>	<1000 pcs boxed >1000 pcs Tape and Reel
<b>Typical P/N</b>	<b>VTB2-2B0 12.8 MHz</b> <b>2</b> = ±2.5 PPM <b>B</b> = +3.0 Vdc <b>0</b> = Mechanical trim adjust

We welcome your custom requests and will issue a custom part number for items that are not listed.

---



**For additional information please contact:**

USA: Vectron International ~ 267 Lowell Road, Hudson, NH 03051  
 Tel: 1-88-VECTRON-1 ~ Fax: 1-888-FAX-VECTRON ~ Email: vectron@vectron.com  
 EUROPE: Tel: 49 (0) 3328 4784 17 • Fax: 49 (0) 3328 4784 30  
 ASIA: Tel: +86 21 28909740 / 41 / 42 • Fax: +86 21 28909240 / 2890999