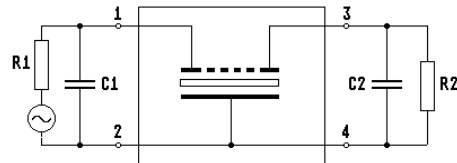
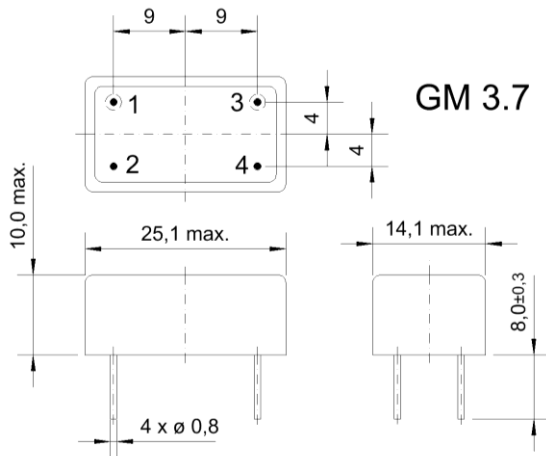


Specification for monolithic crystal filter:

**MQF 30.0-0600/03**

**1. General**

1.1. Package:

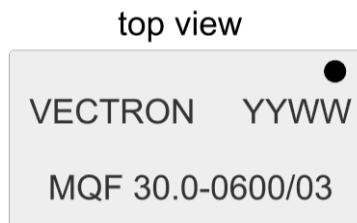


- 1.2. Type name: MQF 30.0-0600/03
- 1.3. Number of poles: 6
- 1.4. Operating temperature range: -20°C to +70°C
- 1.5. Storage temperature range: -45°C to +85°C

**2. Electric values**

- 2.1. Nominal centre frequency fo: 30.0 MHz
- 2.2. **Pass band**
  - 2.2.1. Bandwidth between 3 dB - frequencies: > fo ± 3.0 kHz
  - 2.2.2. Ripple: < 2.0 dB at fo ± 2.0 kHz
  - 2.2.3. Insertion loss: < 5.5 dB  
( measured on smallest attenuation in pass band )
- 2.3. **Stop band**
  - 2.3.1. fo ± 10 kHz > 40 dB
  - 2.3.2. fo ± 12.5 kHz > 60 dB
  - 2.3.3. Alternate Attenuation > 60 dB
- 2.4. Nominal / maximum input power level 0 dBm / +15 dBm
- 2.5. Terminating impedance R//C ( input and output ): 50 Ω // 0 pF

3. Marking:



- 4. Environment conditions: Corresponding to Vectron standard CF001