

4

3

2

1


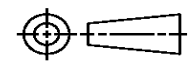
THIS DRAWING IS UNPUBLISHED. RELEASED FOR PUBLICATION
 © COPYRIGHT ALL RIGHTS RESERVED.

LOC	DIST	REVISIONS					
		P	LTR	DESCRIPTION	DATE	DWN	APVD
			A4	ECR-15-012201	08SEP2015	GK	SD

REPLACED BY OCEAN STYLE APPLICATOR PART NUMBER 2266795-1

FOR REPLACEMENT PARTS FOR APPLICATOR 1530032
 REFER TO ADDITIONAL PAGE(S). SPARE PARTS KIT (IF LISTED)
 WILL REMAIN AVAILABLE.

THE REPLACEMENT OCEAN STYLE APPLICATOR HAS THE
 SAME TERMINATOR/PRESS INTERFACE AS APPLICATOR
 1530032

THIS DRAWING IS A CONTROLLED DOCUMENT.		DWN	GOPALAKRISHNA HV		 TE Connectivity
DIMENSIONS:		CHK	GOPALAKRISHNA HV		
		TOLERANCES UNLESS OTHERWISE SPECIFIED:		APVD	STOUGH DALE
		0 PLC ± 1 PLC ± 2 PLC ± 3 PLC ± 4 PLC ± ANGLES ±		PRODUCT SPEC	
MATERIAL		FINISH		APPLICATION SPEC	
		WEIGHT		SIZE	A3
		CUSTOMER DRAWING		CAGE CODE	
				DRAWING NO	©- 1530032
				RESTRICTED TO	
				SCALE	
				SHEET	1 OF 2
				REV	A4

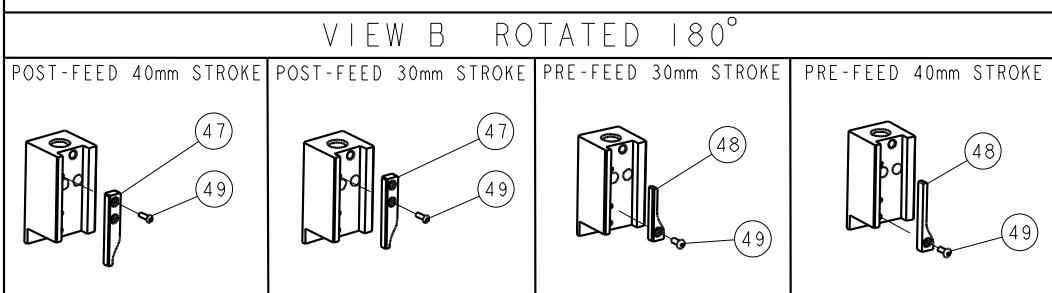
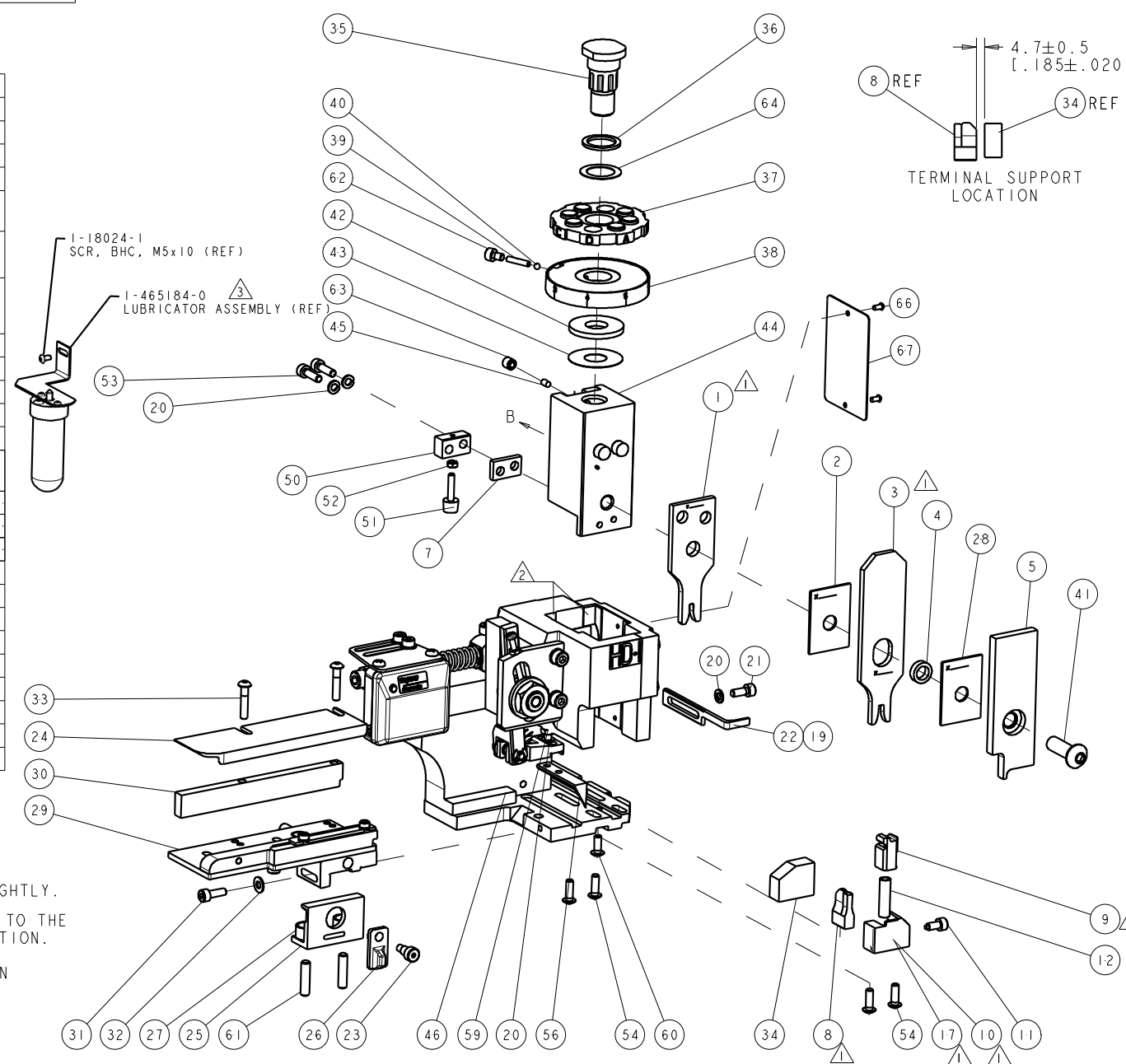
PART NUMBER	REV	TERMINATOR	FEED TYPE	DESCRIPTION
1530032-1	A	LEADMAKER	MECH POST FEED	CUTS CARRIER
1530032-2	A	BENCH	MECH PRE FEED	CUTS CARRIER
1530032-6	A	LEADMAKER	MECH POST FEED	CONTINUOUS CARRIER
7-1530032-1	A	LEADMAKER	MECH POST FEED	-1 AND SPARE PARTS
7-1530032-2	A	BENCH	MECH PRE FEED	-2 AND SPARE PARTS
7-1530032-6	A	LEADMAKER	MECH POST FEED	-6 AND SPARE PARTS
7-1530032-7	A	-	-	SPARE PARTS KIT

CRIMP	SIZE	TYPE	RANGE
WIRE	2.39 [.094 IN]	F	0.50-0.80mm ²
INSUL	3.48 [.137 IN]	F	1.87mm-3.13mm

TE PN	PACKARD PN
1949093-2	12020156
1949093-1	12015869
1949093-3	12015864

WIRE SIZE	CRIMP HEIGHT	PIN PN & LENGTH [IN]
1.00mm ²	1.55 ± 0.05 [.061 ± .002 IN]	9-354778-8 [.2985]
0.80mm ²	1.35 ± 0.05 [.053 ± .002 IN]	1-354779-9 [.3085]
0.50mm ²	1.30 ± 0.05 [.051 ± .002 IN]	2-354779-2 [.3100]

- ⚠️ RECOMMENDED SPARE PARTS.
- 2. GREASE RAM, CAM, CAM FOLLOWER AND FEED ROD LIGHTLY.
- ⚠️ CERTAIN TERMINALS REQUIRE LUBRICATION. REFER TO THE APPLICATOR INSTRUCTION SHEET FOR MORE INFORMATION.
- 4. LUBRICATE DAILY PER THE APPLICATOR INSTRUCTION SHEET SUPPLIED WITH THE APPLICATOR.
- ⚠️ 1.00mm WIRE IS NOT LISTED IN CABLE RANGE FOR THIS TERMINAL ON PACKARD SPEC BUT IS LISTED AS BEING TESTED AND CRIMPED BY PACKARD.



77	76	72	71	-6	-2	-1	PART NO	DESCRIPTION	ITEM NO
-	-	-	-	-	-	-	-	-	84
-	-	-	-	-	-	-	-	-	83
-	-	-	-	-	-	-	-	-	82
-	-	-	-	-	-	-	-	-	81
-	-	-	-	-	-	-	-	-	80
-	-	-	-	-	-	-	-	-	79
-	-	-	-	-	-	-	-	-	78
-	-	-	-	-	-	-	-	-	77
-	-	-	-	-	-	-	-	-	76
-	-	-	-	-	-	-	-	-	75
-	-	-	-	-	-	-	-	-	74

SET UP GAGE
458637-3

REV	DESCRIPTION	DATE	BY	APPV
A	RELEASED	03DEC2008	LG	TE
A1	ECR-09-001435	20JAN2009	MY	TE
A2	CORRECTED VIEWABLE IN STARTEC	29JAN2009	MY	MY
A3	ECR-15-007470	19MAY2015	XZ	LZ

REV	DESCRIPTION	DATE	BY	APPV	
-	-	-	-	-	73
-	-	-	-	-	72
-	-	-	-	-	71
-	-	-	-	-	70
-	-	-	-	-	69
-	-	-	-	-	68
-	-	-	-	-	67
-	-	-	-	-	66
-	-	-	-	-	65
-	-	-	-	-	64
-	-	-	-	-	63
-	-	-	-	-	62
-	-	-	-	-	61
-	-	-	-	-	60
-	-	-	-	-	59
-	-	-	-	-	58
-	-	-	-	-	57
-	-	-	-	-	56
-	-	-	-	-	55
-	-	-	-	-	54
-	-	-	-	-	53
-	-	-	-	-	52
-	-	-	-	-	51
-	-	-	-	-	50
-	-	-	-	-	49
-	-	-	-	-	48
-	-	-	-	-	47
-	-	-	-	-	46
-	-	-	-	-	45
-	-	-	-	-	44
-	-	-	-	-	43
-	-	-	-	-	42
-	-	-	-	-	41
-	-	-	-	-	40
-	-	-	-	-	39
-	-	-	-	-	38
-	-	-	-	-	37
-	-	-	-	-	36
-	-	-	-	-	35
-	-	-	-	-	34
-	-	-	-	-	33
-	-	-	-	-	32
-	-	-	-	-	31
-	-	-	-	-	30
-	-	-	-	-	29
-	-	-	-	-	28
-	-	-	-	-	27
-	-	-	-	-	26
-	-	-	-	-	25
-	-	-	-	-	24
-	-	-	-	-	23
-	-	-	-	-	22
-	-	-	-	-	21
-	-	-	-	-	20
-	-	-	-	-	19
-	-	-	-	-	18
-	-	-	-	-	17
-	-	-	-	-	16
-	-	-	-	-	15
-	-	-	-	-	14
-	-	-	-	-	13
-	-	-	-	-	12
-	-	-	-	-	11
-	-	-	-	-	10
-	-	-	-	-	9
-	-	-	-	-	8
-	-	-	-	-	7
-	-	-	-	-	6
-	-	-	-	-	5
-	-	-	-	-	4
-	-	-	-	-	3
-	-	-	-	-	2
-	-	-	-	-	1

DIMENSIONS: mm [IN] 	TOLERANCES UNLESS OTHERWISE SPECIFIED: mm [IN] 1.0 PLC ± 2.0 PLC ± 3.0 PLC ± 4.0 PLC ± ANGLES ±	B. HIGMAN T. ELBIN APVD N. DEMING	DATE: 10NOV2008 10NOV2008 10NOV2008
		STE TE Connectivity Harrisburg, PA 17105-3608	
		SIDE FEED HDI APPLICATOR	