

DETAILS

Product Number	F15558_MIRELLA-G2-S
Family	Mirella
Type	Reflector
Color	metal
Diameter	49,9 mm
Height	24,8 mm
Style	round
Optic Material	PC
Holder Material	
Fastening	
Status	production ready
ROHS Compliant	Yes
Date Updated	17/08/2017



OPTICAL PROPERTIES

LED	Viewing Angle	Light Beam	Efficiency	cd/lm	Connector
VERO10	19 deg	Spot	91 %	4.500	LEDiL: F15616_HEKLA-SOCKET-F
Vesta TW 9mm (12W)	18 deg	Spot	85 %	3.800	Bender Wirth: 490 Typ L8
VERO13	sim: 25	Spot	sim: 82 %	sim: 2.300	LEDiL: C16142_HEKLA-SOCKET-K
CLL02x/CLU02x (LES10)	15 deg	Spot	88 %	6.600	LEDiL: F15255_HEKLA-SOCKET-C
CLU700/701	13 deg	Spot	91 %	8.500	LEDiL: F15255_HEKLA-SOCKET-C
CLC020 Series (Dim-To-Warm)	21 deg	Spot	81 %	2.600	LEDiL: C16142_HEKLA-SOCKET-K
CLU710/711	19 deg	Spot	86 %	3.400	LEDiL: F15859_HEKLA-SOCKET-I
CXA/B 15xx	18 deg	Spot	93 %	4.800	LEDiL: F15256_HEKLA-SOCKET-D
CXA/B 13xx	12 deg	Spot	93 %	9.200	LEDiL: F15956_HEKLA-SOCKET-J
LUXEON CoB 1202/1203	19 deg	Spot	90 %	4.300	LEDiL: F15858_HEKLA-SOCKET-H
COB T-Type	sim: 14	Spot	sim: 88 %	sim: 7.360	LEDiL: F15848_HEKLA-SOCKET-G
Soleriq S9	21 deg	Spot	91 %	3.800	LEDiL: F15255_HEKLA-SOCKET-C
LC020C	18 deg	Spot	90 %	4.400	LEDiL: F15848_HEKLA-SOCKET-G
SLE G6 LES10	sim: 18	Spot	sim: 90 %	sim: 4.600	LEDiL: F15255_HEKLA-SOCKET-C

H G F E D C B A

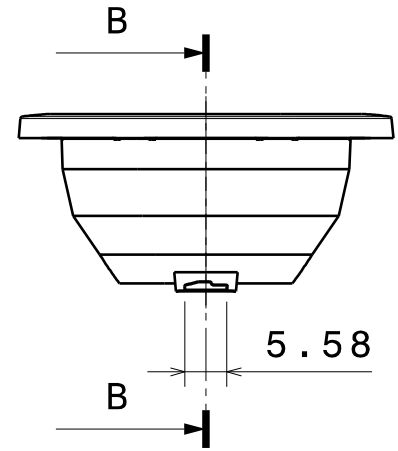
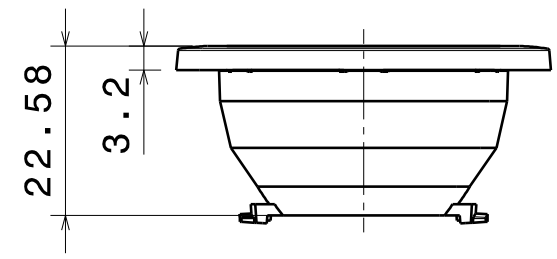
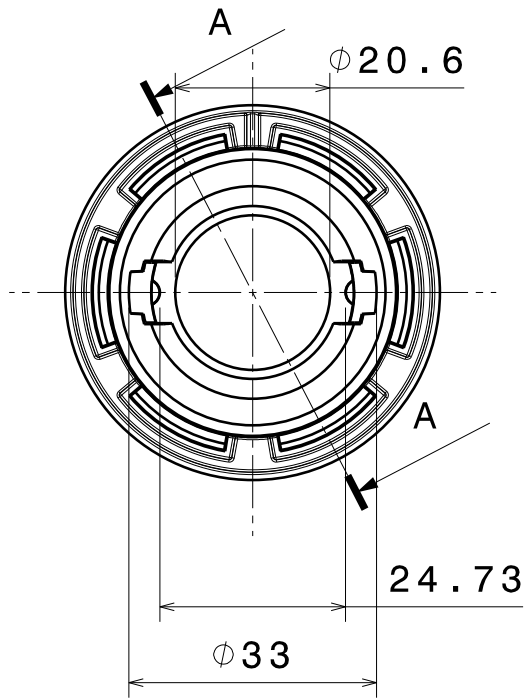
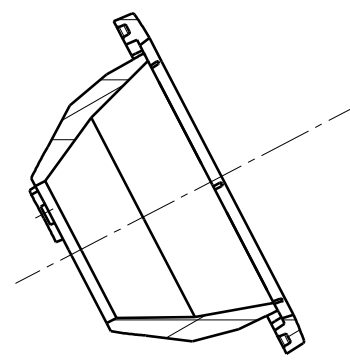
4

3

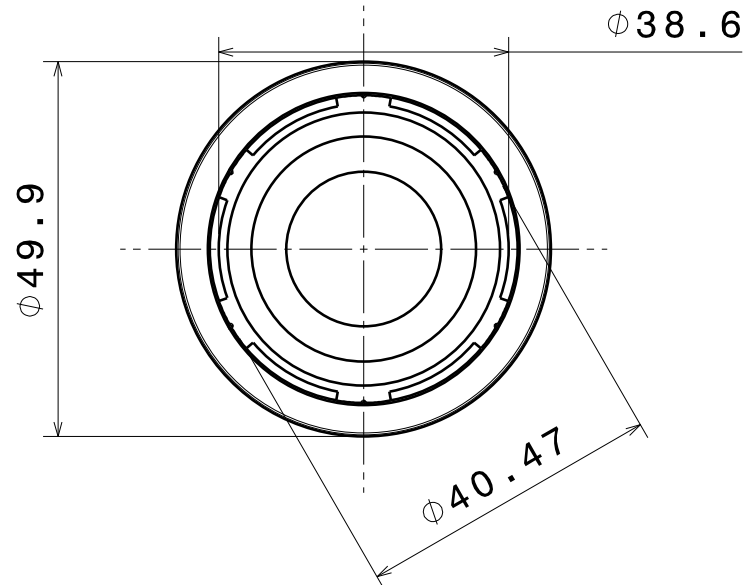
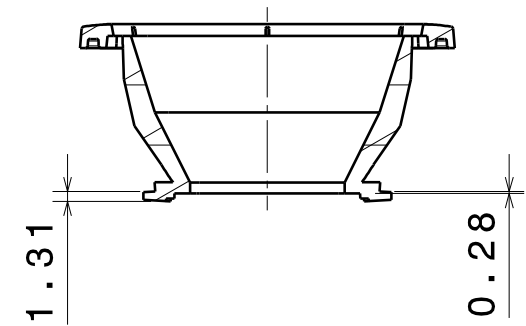
2

1

SECTION A-A



SECTION B-B

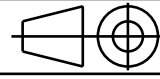


INDEX	PART NO	DESCRIPTION	MATERIAL	COLOUR
1	F15558	MIRELLA-G2-S	PC	Mirror

Tolerances if not otherwise shown
 According to DIN ISO 2768-1
 Linear measures:
 Up to 30mm class M, otherwise class N.
 According to DIN ISO 2768-2
 Form and position: class K
 Control for SPC marked dimensions.

LEDiL LediL Oy
 Salorankatu 10
 FIN 24240 SALO
 Finland

FIRST ANGLE PROJECTION:



DRAWING TITLE
F15558_MIRELLA-G2-S

This drawing is the property
 of LEDiL Oy. It may not be
 reproduced, copied or
 communicated without a written
 agreement with LEDiL Oy.

SIZE	PART NUMBER
A3	F15558

SCALE	1:1	WEIGHT	4.7 g	SHEET	1/1
-------	-----	--------	-------	-------	-----

H G B A

4

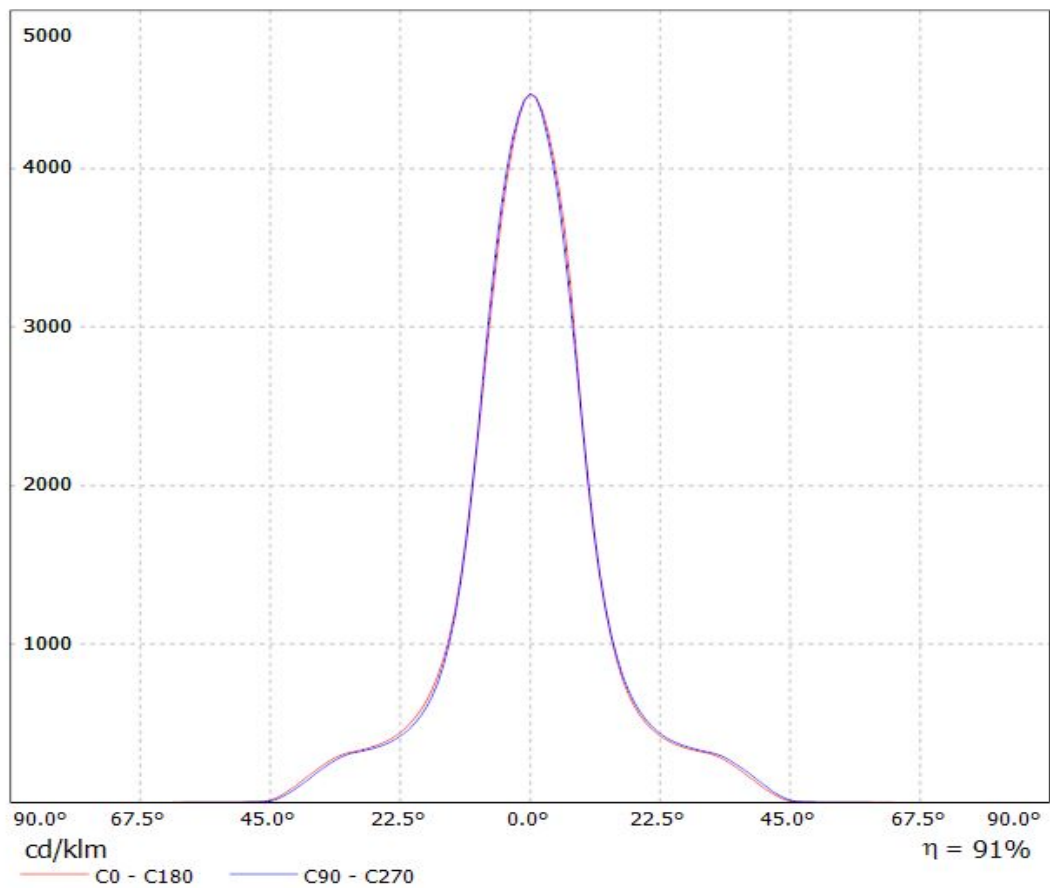
3

2

1

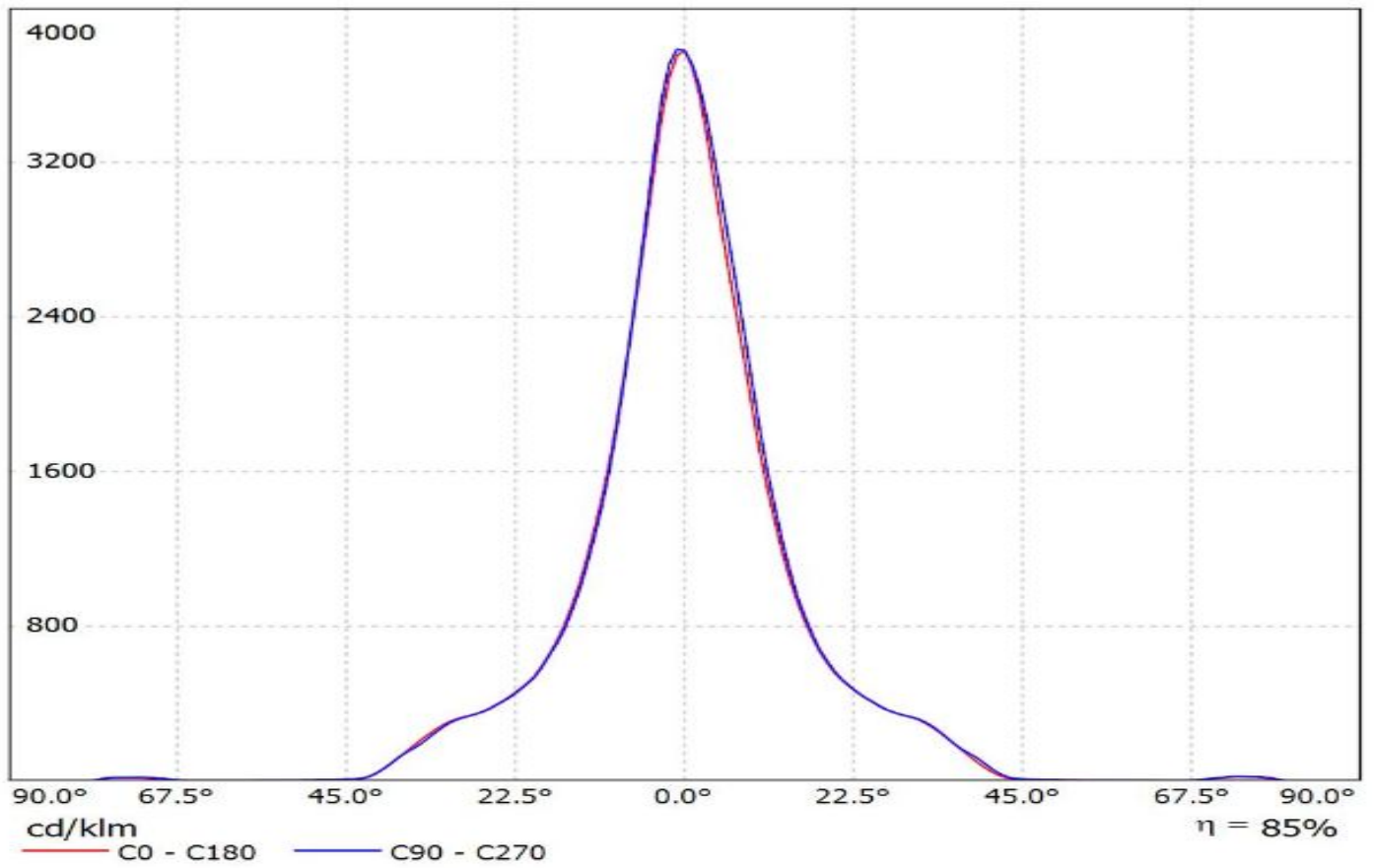
Luminaire: LEDiL Oy F15558_MIRELLA-G2-S_(VERO10+F15616)

Lamps: 1 x Bridgelux_VERO10_(30-E1000B-Y2)_+F15616_HEKLA-SOCKET-F_815.324lm@250mA_CCT=3000K_P=6.48491W_I=0.25A

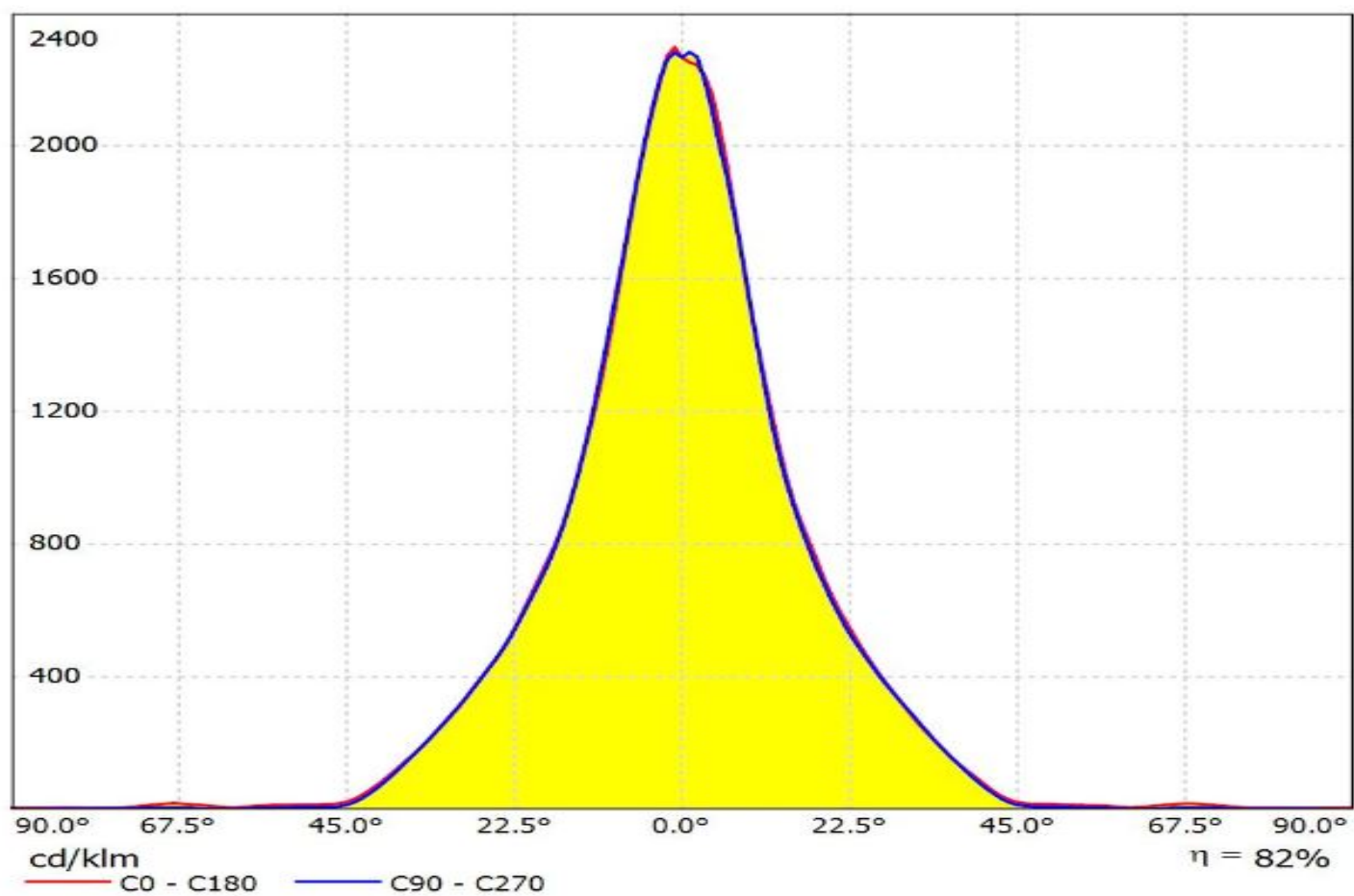


Luminaire: Ledil F15558_MIRELLA-G2-S_(Vesta_DTW_9mm+F16142+BW)

Lamps: 1 x Bridgelux_Vesta_DTW_9mm_(12W)_(BXRV-DR-1830-H-1000-B-13)+_F16142_Hekla-K+BW_490_TypL8_1018.44_lm@350mA_P=11.6974W_I=0.350A

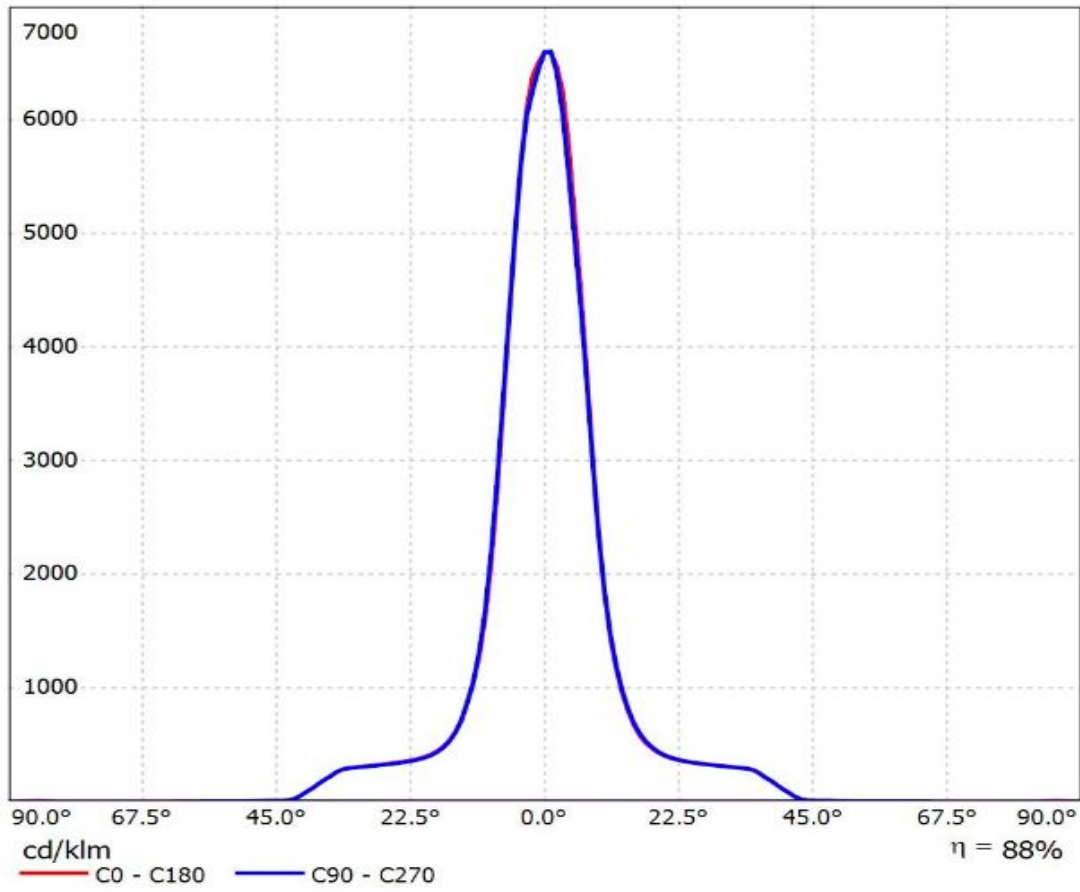


Luminaire: Ledil Oy F15558_MIRELLA-G2-S_C16142_HEKLA-SOCKET-K_SIMULATED
Lamps: 1 x BRIDGELUX_VERO13

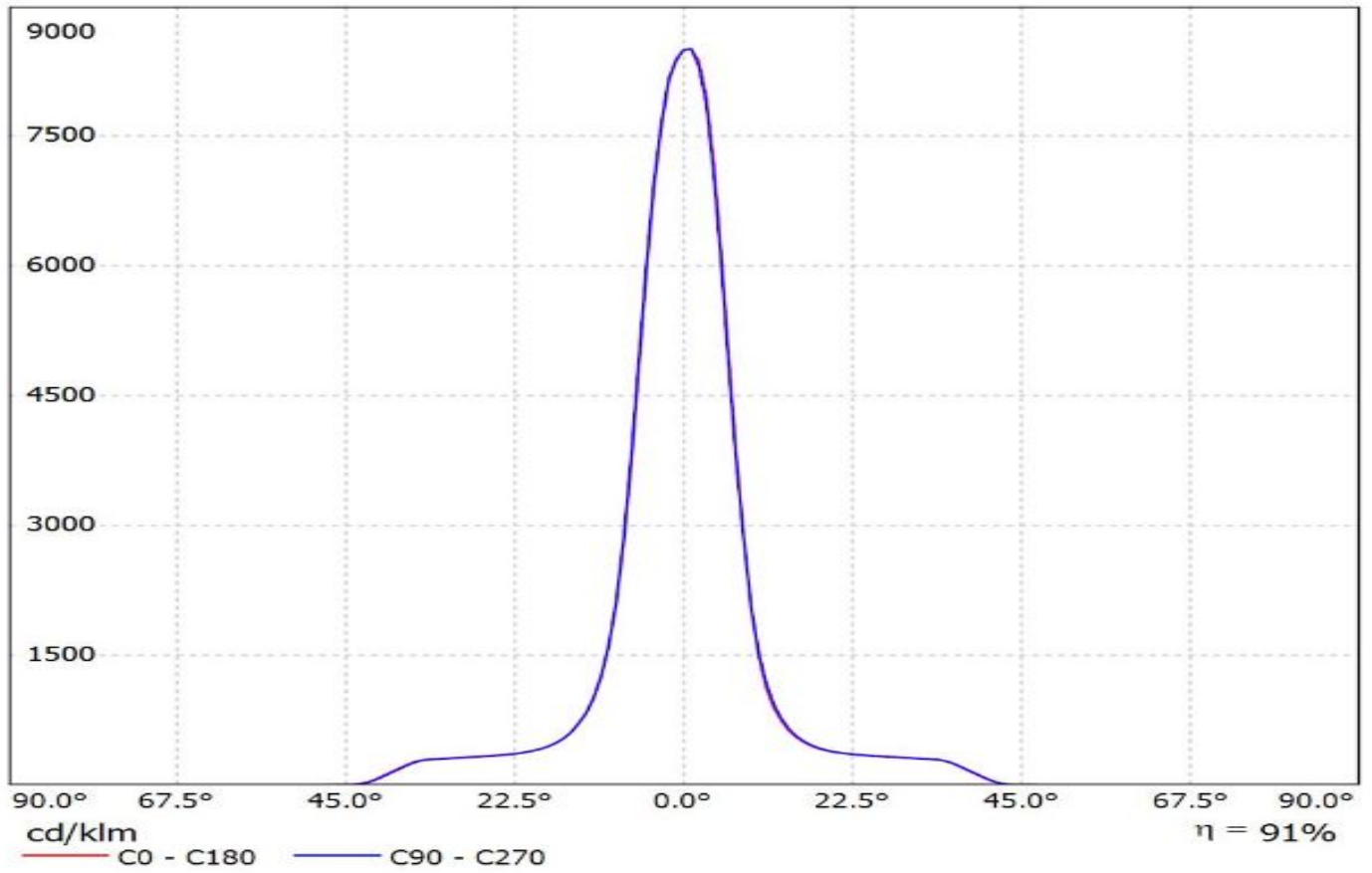


Luminaire: Ledil F15558_MIRELLA-G2-S_(CLU027+F15255)

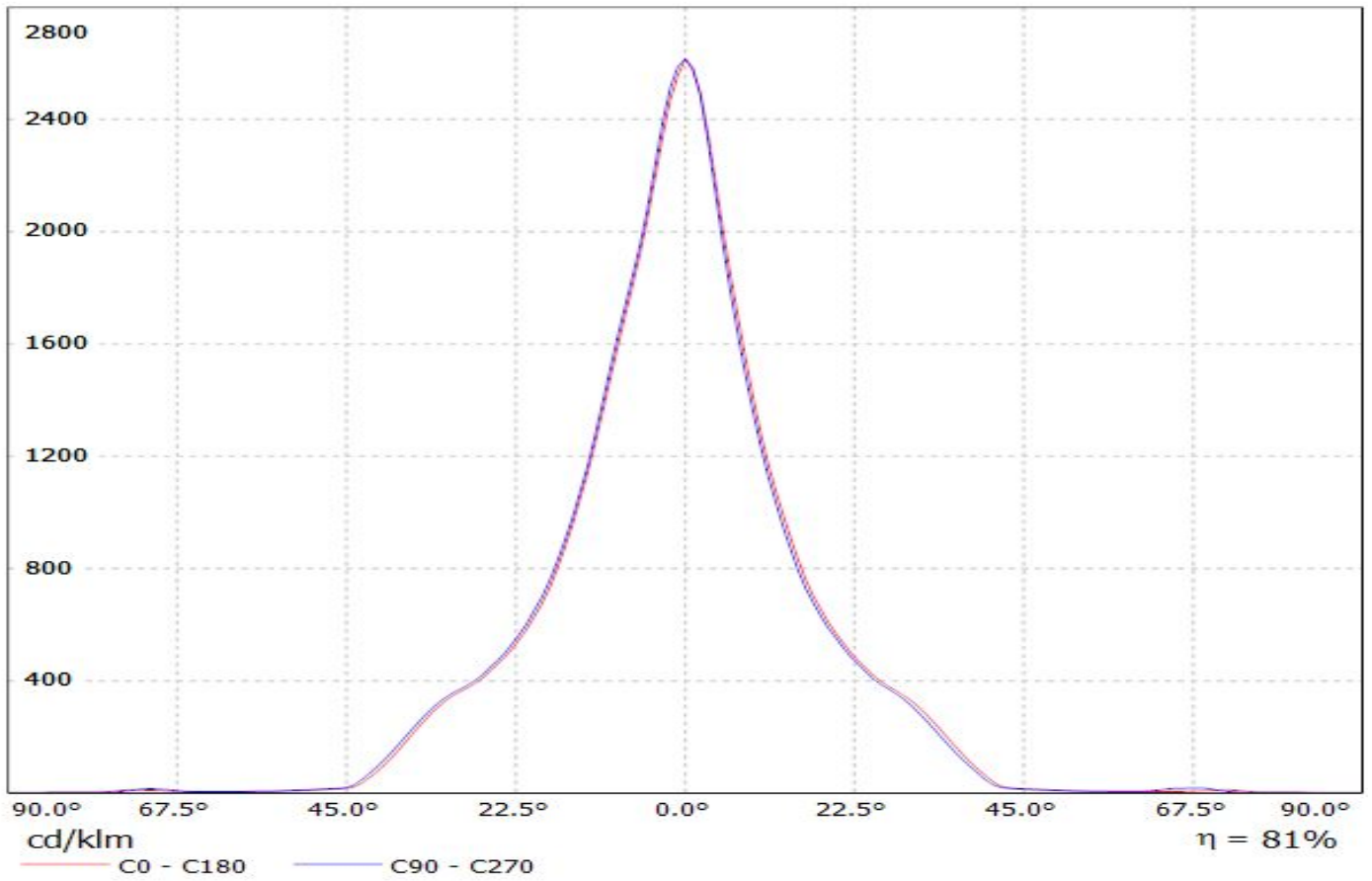
Lamps: 1 x Citizen_CLU027_(CLU027-0304C1-503M2G2)+F15255_HEKLA-SOCKET-C_335.032lm@250mA_P=2.1686W_I=0.25A



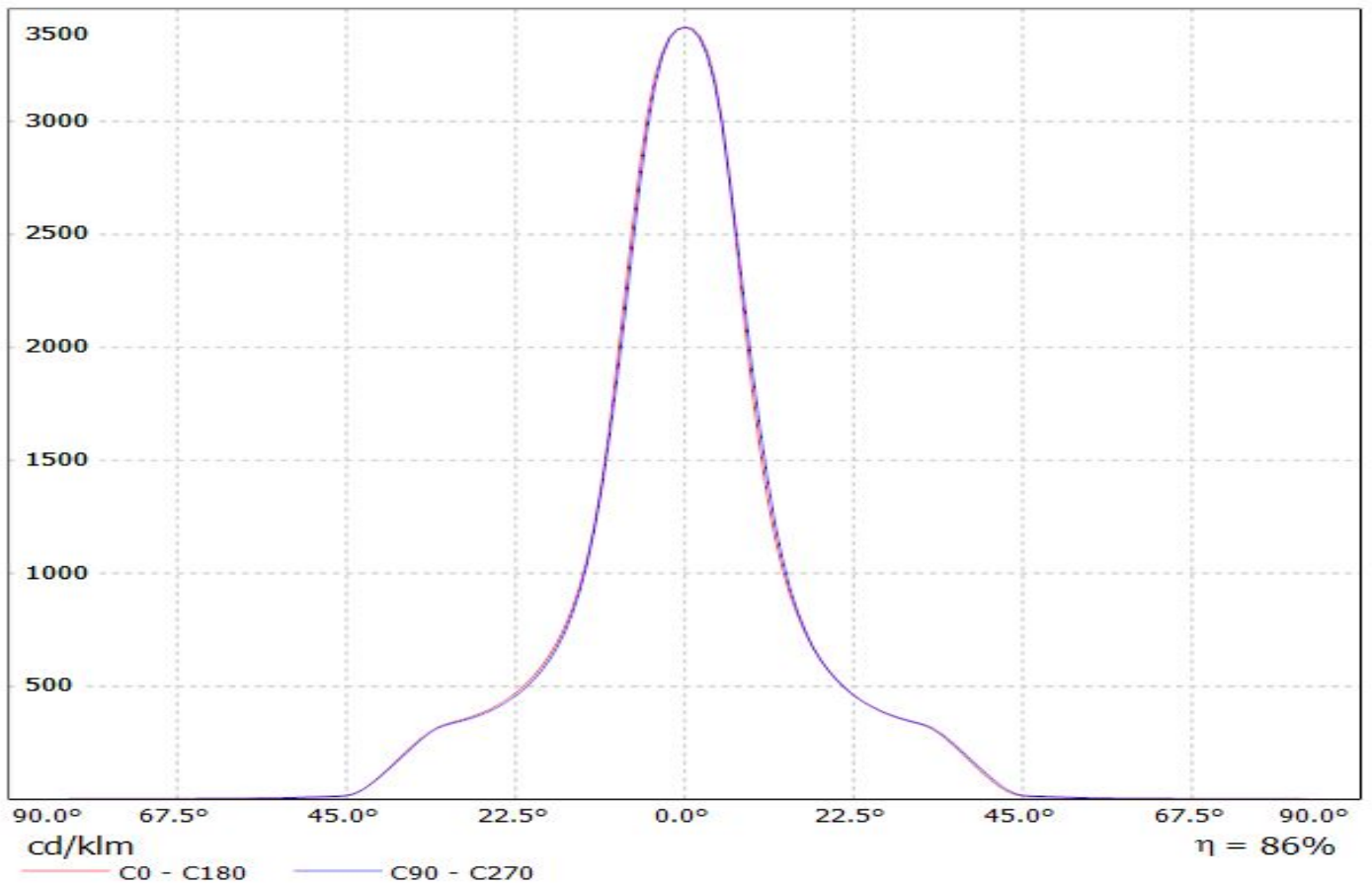
Luminaire: Ledil F15558_MIRELLA-G2-S_(CLU700_+ F15255)
Lamps: 1 x Citizen_CLU700_(CLU700-1002B8-303H5G3)_+_F15255_HEKLA-SOCKET-C_705.572lm@250mA_P=7.5065W_I=0.250A



Luminaire: LEDiL Oy F15558_MIRELLA-G2-S_(CLC020_057A5)
Lamps: 1 x Citizen_CLC020-057A5_913.53lm@360mA_P=12.9104W_I=0.25A

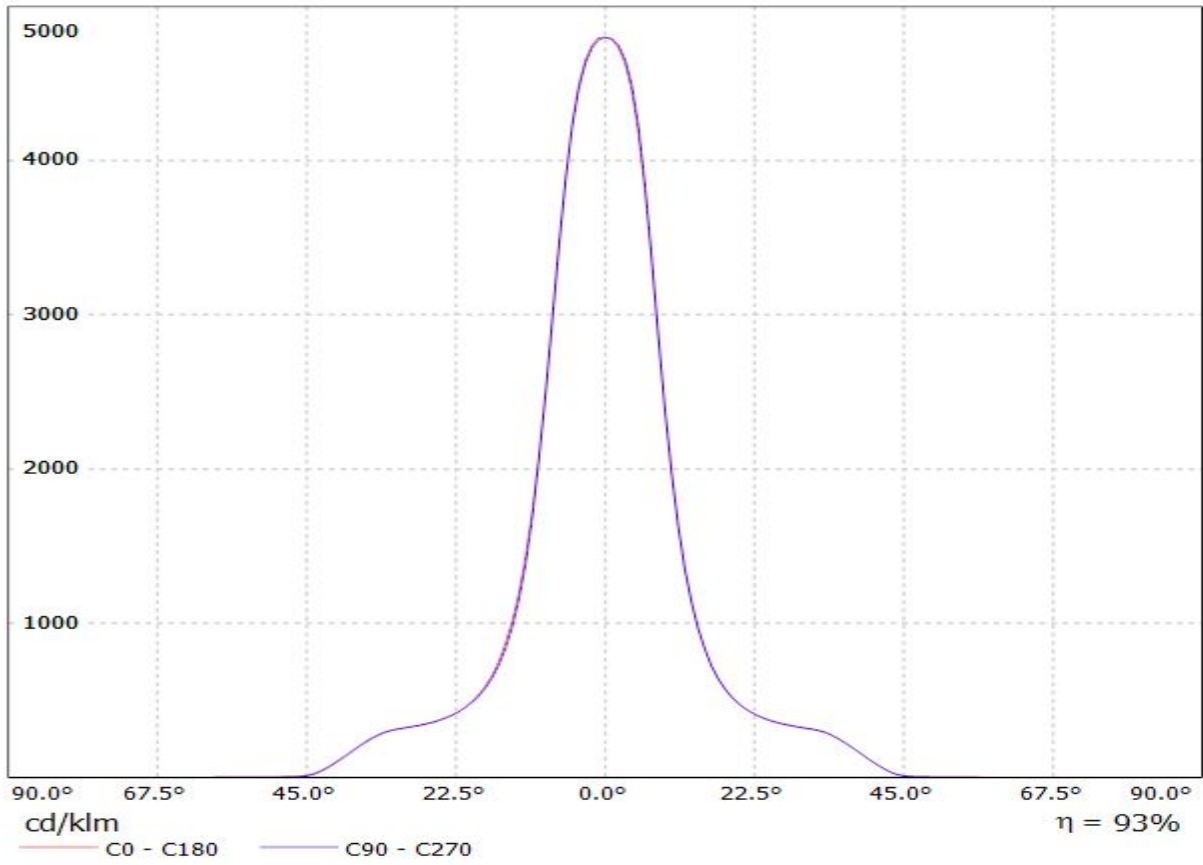


Luminaire: LEDiL Oy F15558_MIRELLA-G2-S_(CLU710)+F15859
Lamps: 1 x Citizen_CLU710_(1204B8-273M2G1)
+F15859_1101.12lm@250mA_CCT=2700K_P=8.52542W_U=34.112V

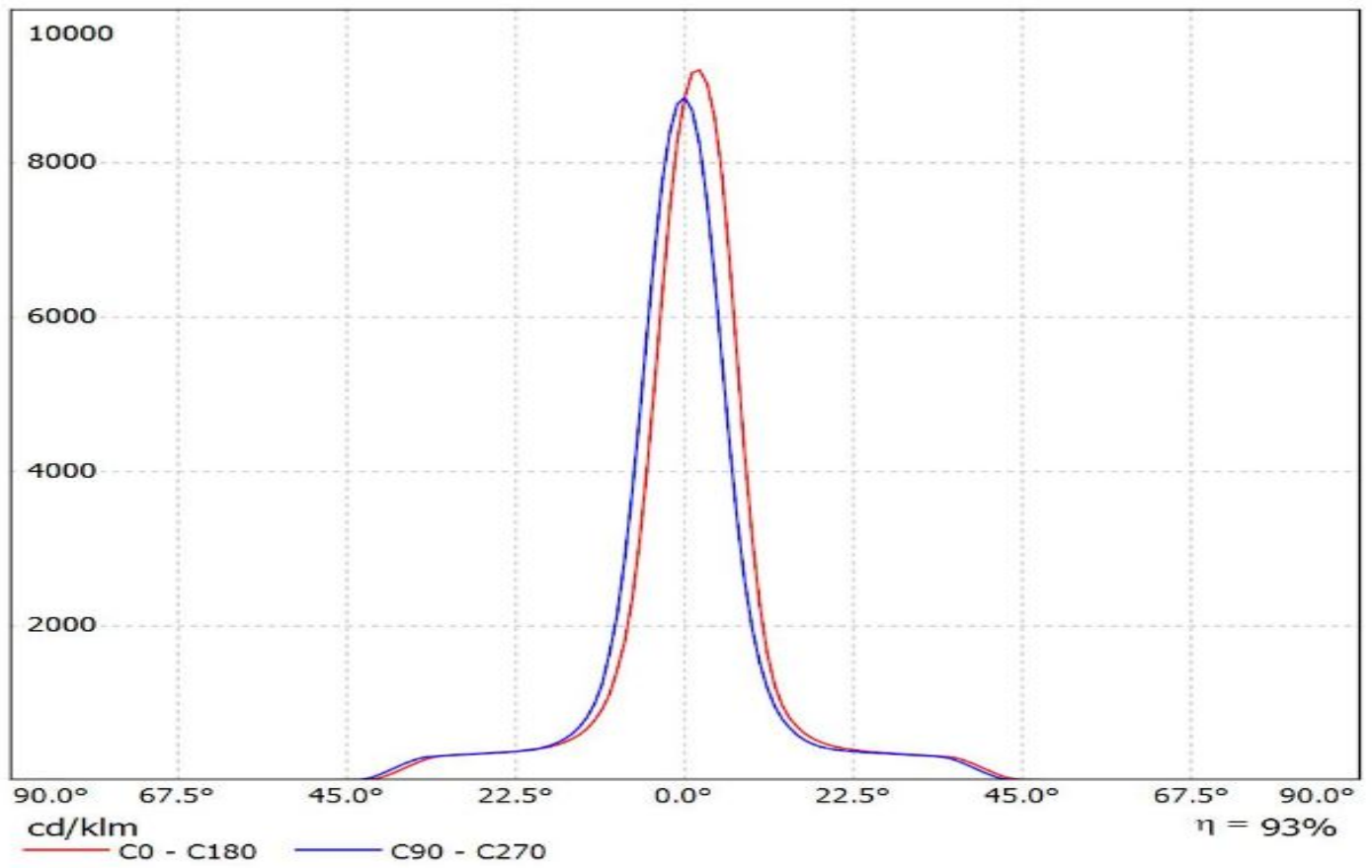


Luminaire: LEDiL Oy F15558_MIRELLA-G2-S_(CXA1520+F15256)

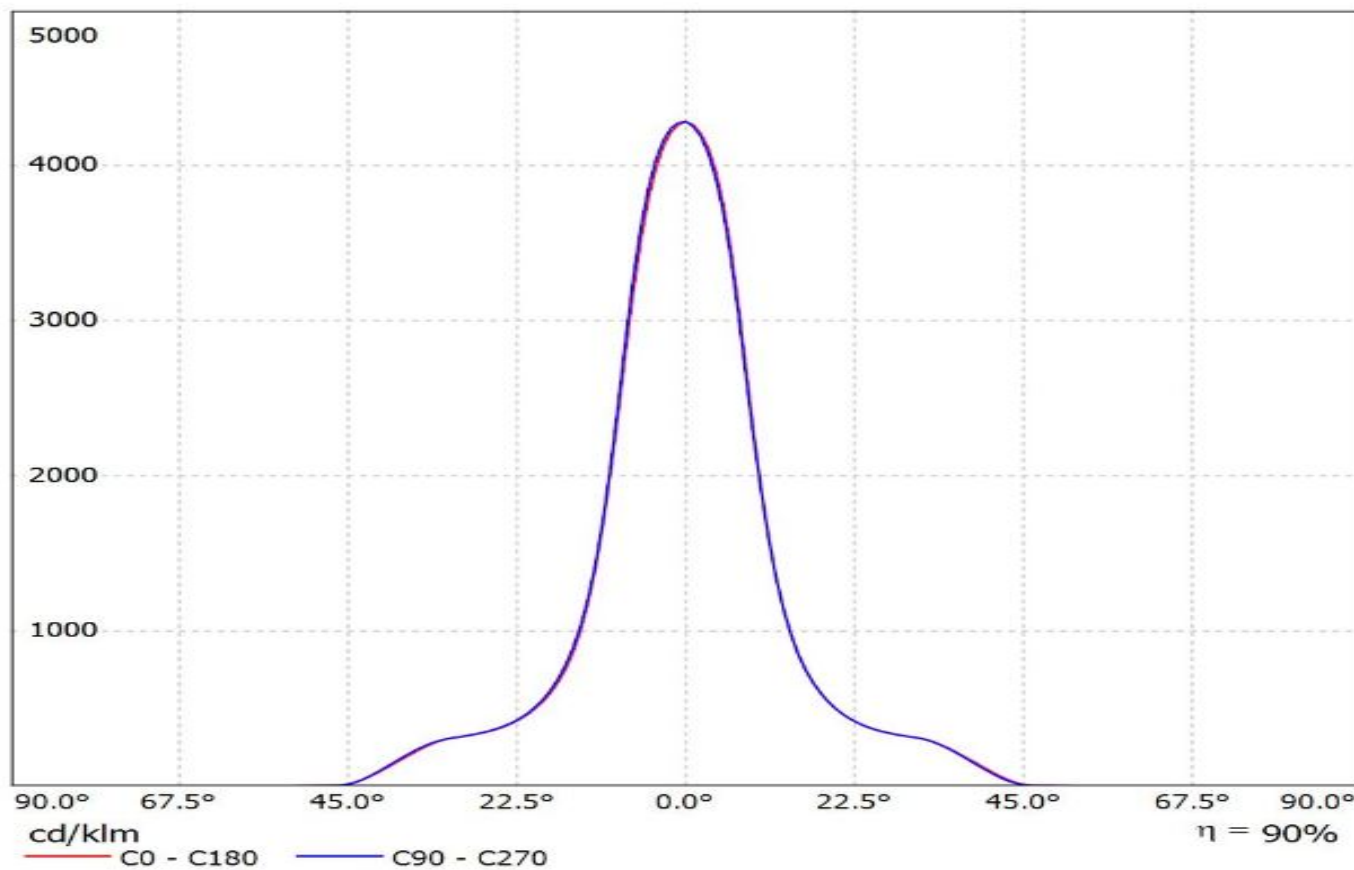
Lamps: 1 x Cree_CXA1520_(-30F-N4-N0H-00001)+F15256_998.951lm@250mA_CCT=3070K_P=8.60161W_I=0.25A



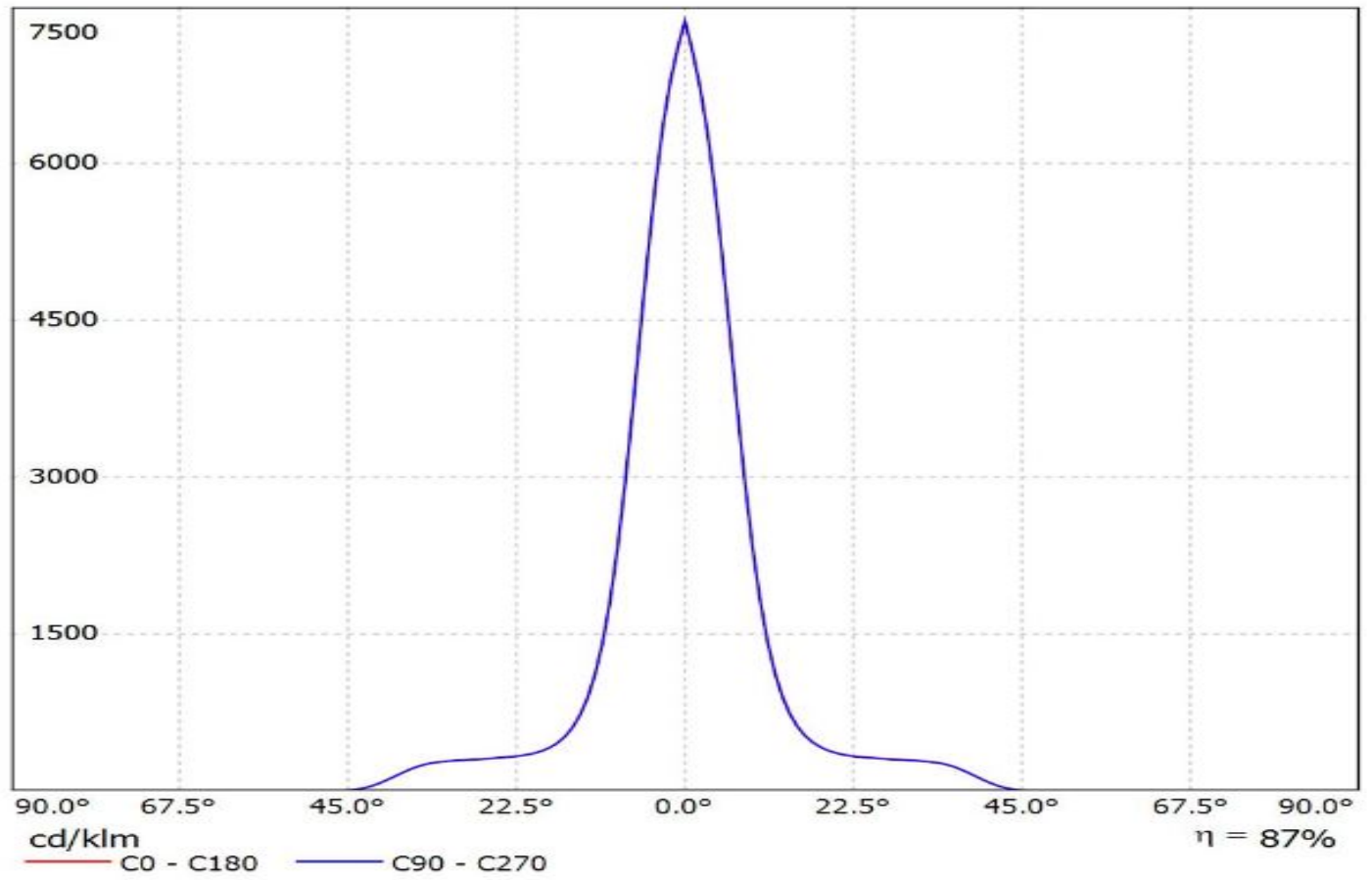
Luminaire: Ledil F1558_MIRELLA-G2-S_(CXA1310_+_F15956)
Lamps: 1 x Cree_CXA1310_(CXA1310-30H-G4-F0Y-00001)_+_F15956_HEKLA-SOCKET-
J_345.939lm@250mA_P=4.27579W_I=0.250A



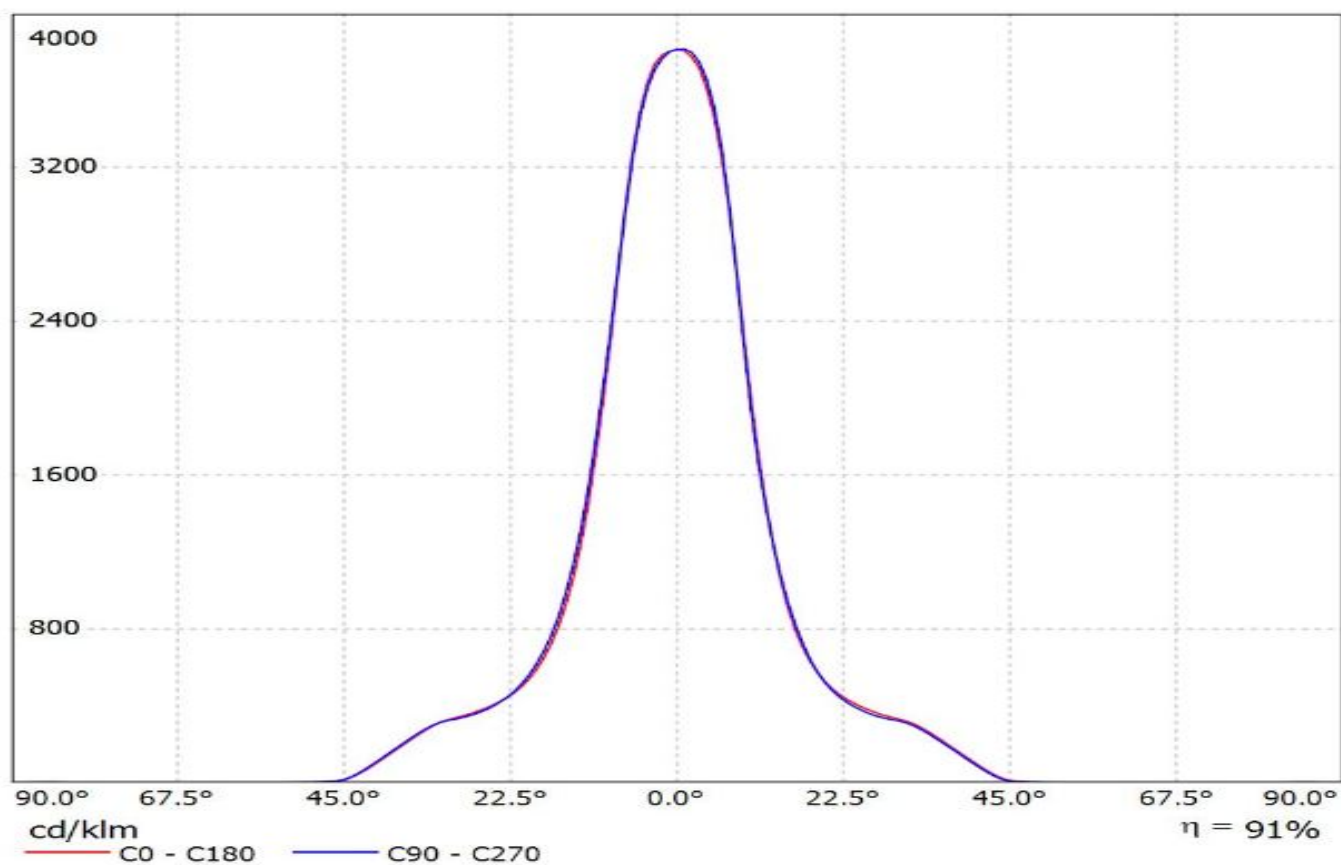
Luminaire: Ledil F15558_MIRELLA-G2-S_(CoB_1203+_F15858)
Lamps: 1 x Luxeon_CoB_1203_(LHC1-3080-1203)+_F15858_HEKLA-SOCKET-
H_993.26lm@250mA_P=8.71526W_I=0.250A



Luminaire: Ledil Oy F15558_MIRELLA-G2-S+_F15848_HEKLA-SOCKET-G_NICHIA_NTCWT012B-V2_SIMULATED
Lamps: 1 x NICHIA NTCWT012B-V2

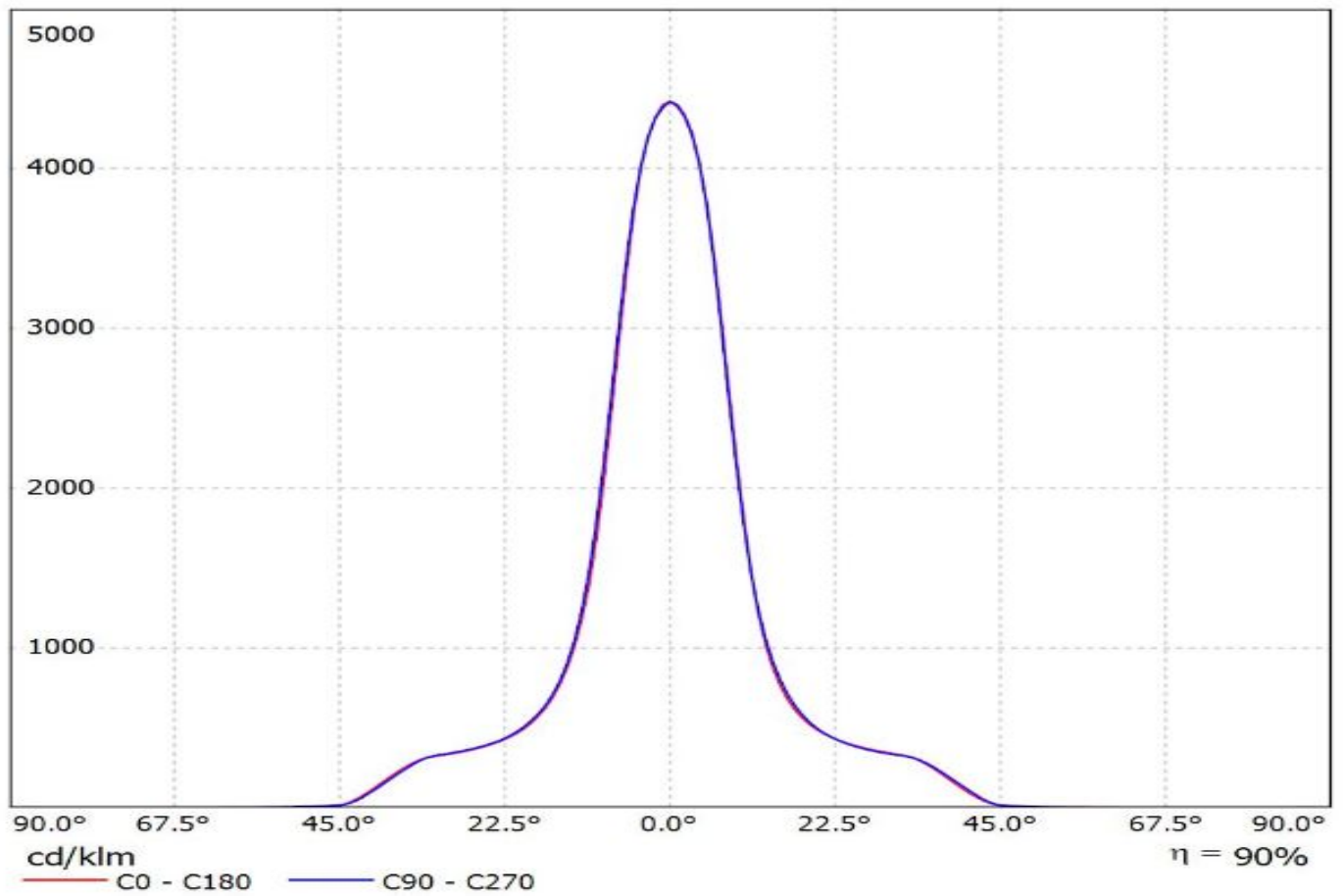


Luminaire: Ledil F15558_MIRELLA-G2-S_(Soleriq_S9+_F15255)
Lamps: 1 x Osram_Soleriq_S9_(GW_KAFHB3.EM)+_F15255_HEKLA-SOCKET-
C_1182.71lm@250mA_P=8.81997W_I=0.250A



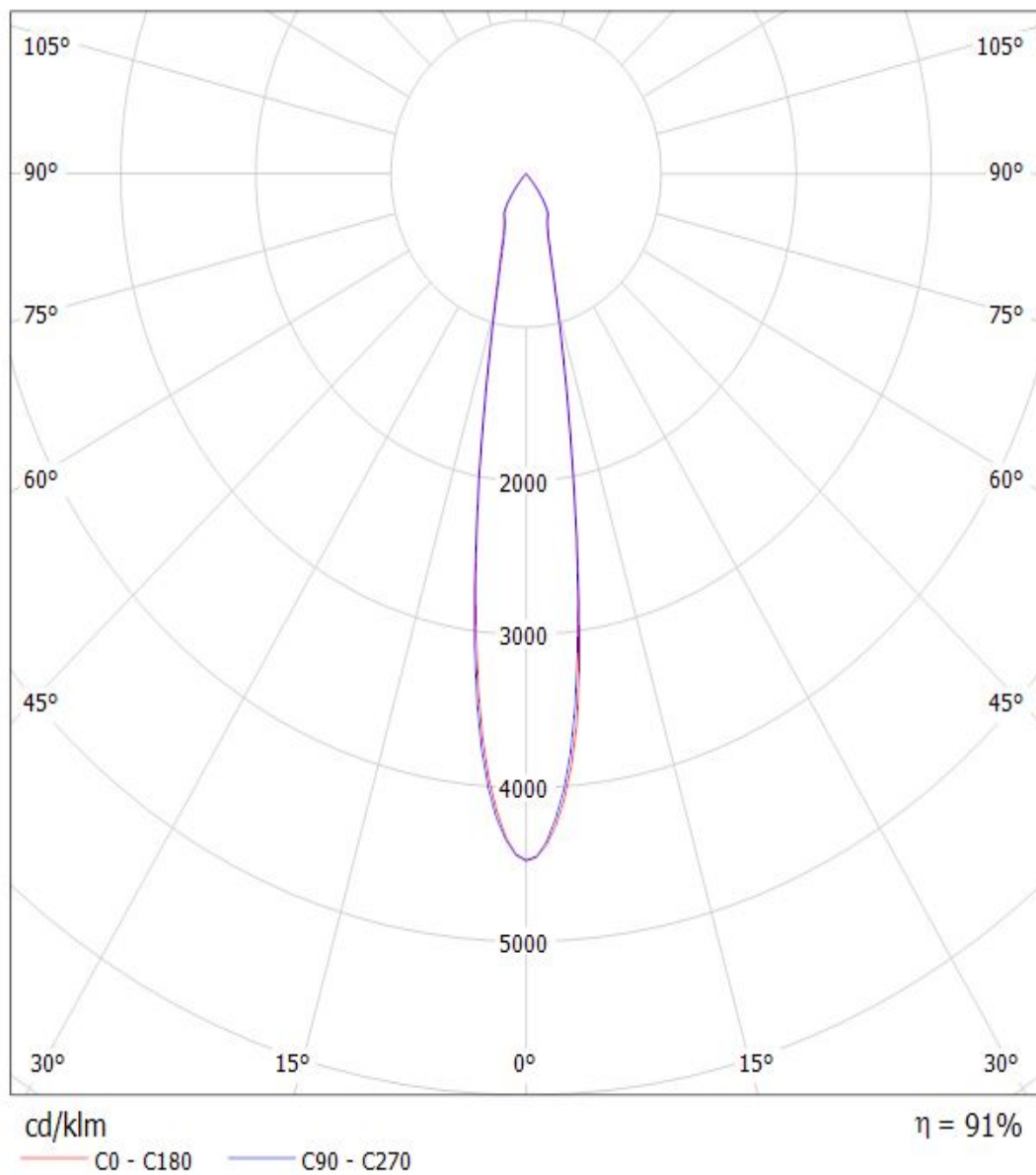
Luminaire: Ledil F15558_MIRELLA-G2-S_(LC020C+_F15848)

Lamps: 1 x Samsung_LC020C+_F15848_HEKLA-SOCKET-G_897.413lm@250mA_P=8.45362W_I=0.250A



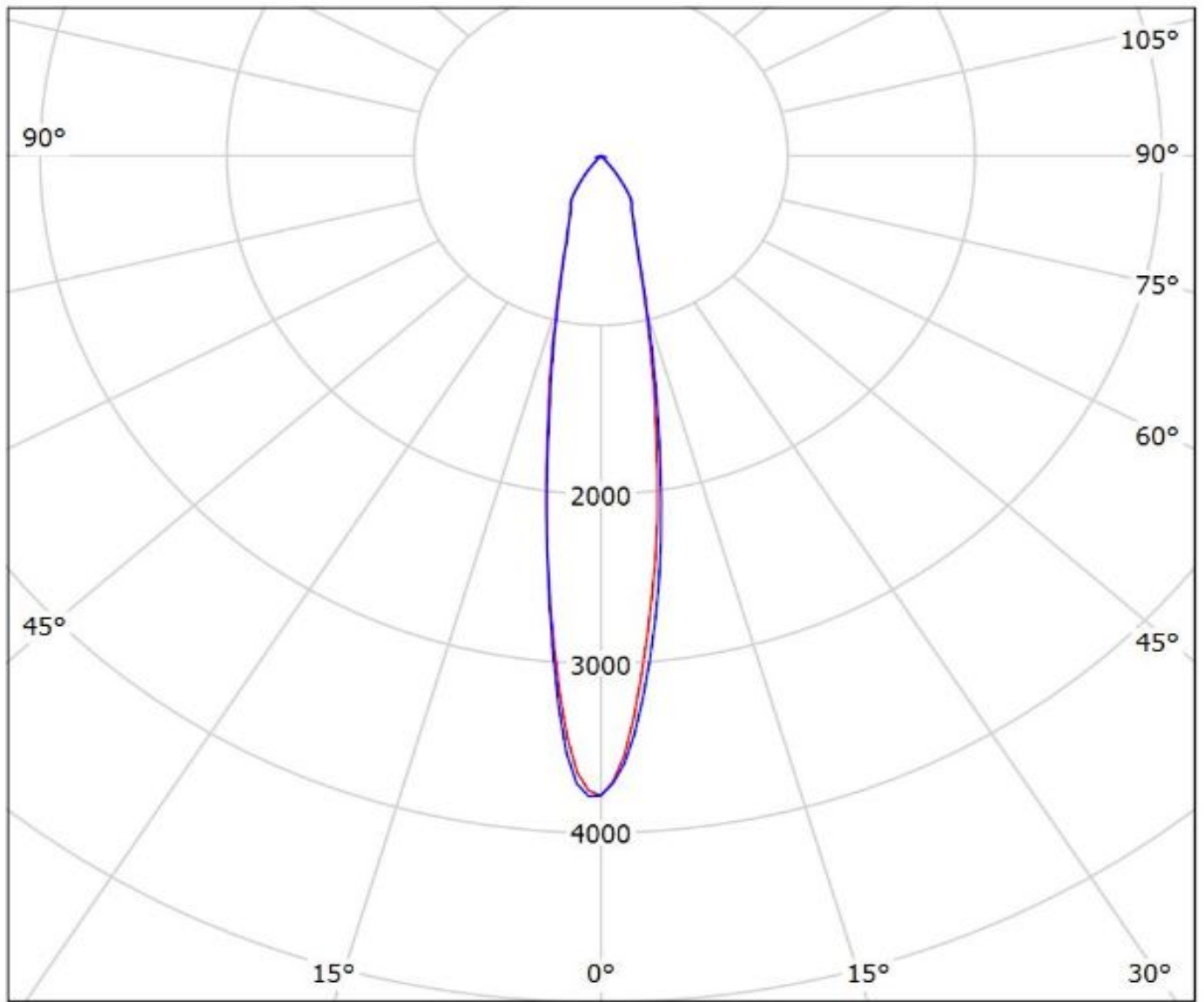
Luminaire: LEDiL Oy F15558_MIRELLA-G2-S_(VERO10+F15616)

Lamps: 1 x Bridgelux_VERO10_(30-E1000B-Y2)_+F15616_HEKLA-SOCKET-F_815.324lm@250mA_CCT=3000K_P=6.48491W_I=0.25A



Luminaire: Ledil F15558_MIRELLA-G2-S_(Vesta_DTW_9mm+F16142+BW)

Lamps: 1 x Bridgelux_Vesta_DTW_9mm_(12W)_ (BXRV-DR-1830-H-1000-B-13)_+_F16142_Hekla-K+BW_490_TypL8_1018.44_lm@350mA_P=11.6974W_I=0.350A

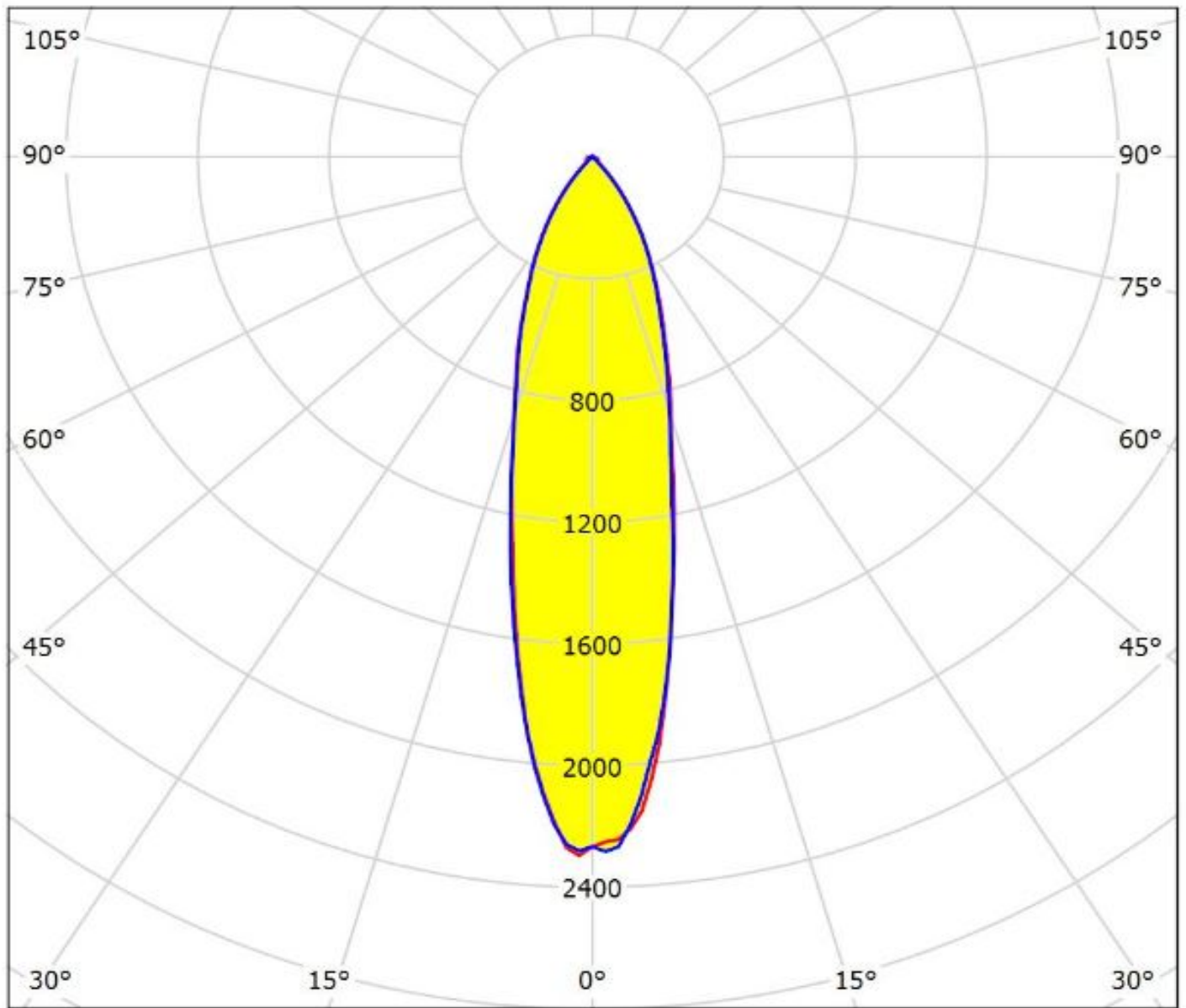


cd/klm

— C0 - C180 — C90 - C270

$\eta = 85\%$

Luminaire: Ledil Oy F15558_MIRELLA-G2-S_C16142_HEKLA-SOCKET-K_SIMULATED
Lamps: 1 x BRIDGELUX_VERO13



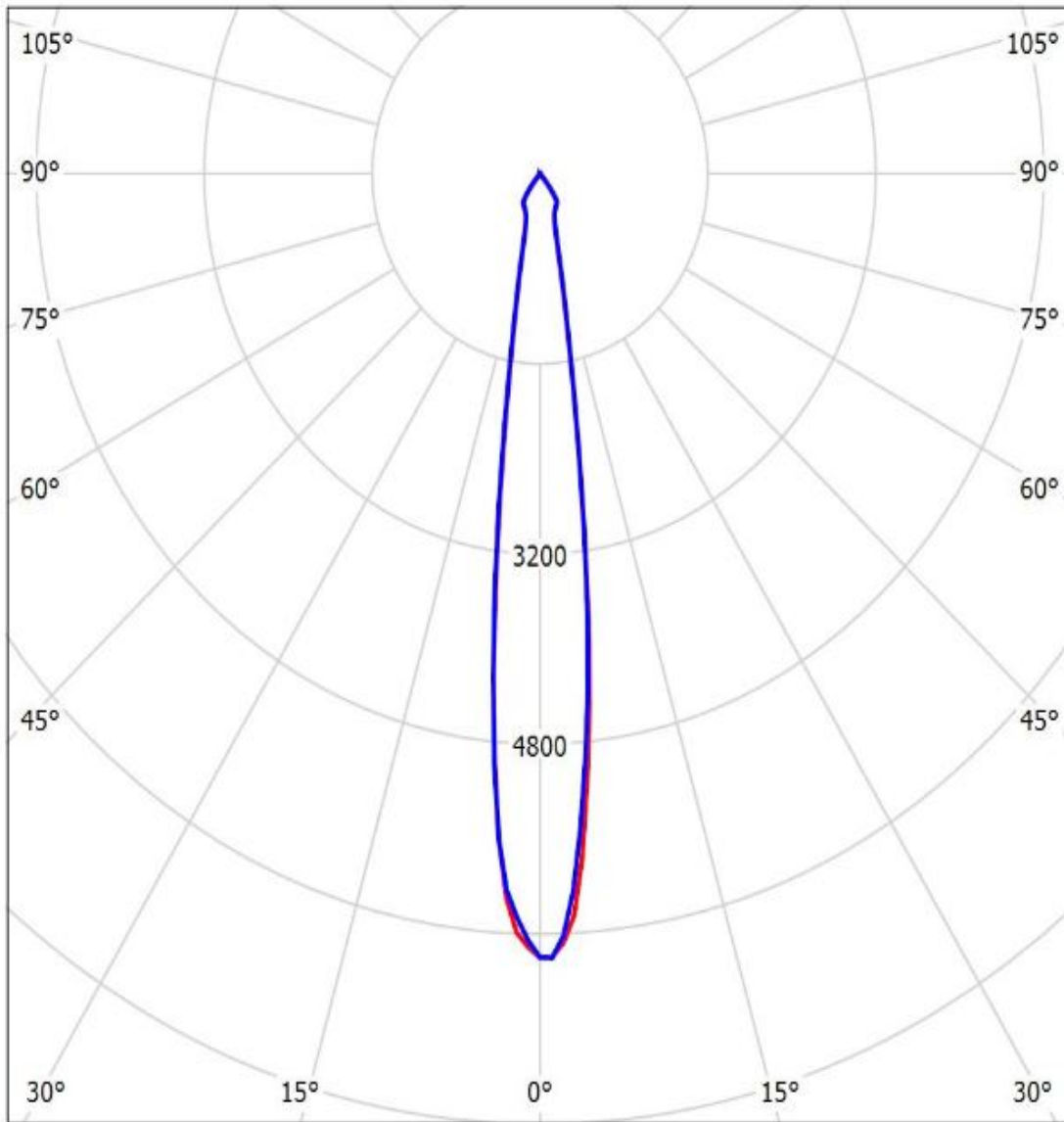
cd/klm

— C0 - C180 — C90 - C270

$\eta = 82\%$

Luminaire: Ledil F15558_MIRELLA-G2-S_(CLU027+F15255)

Lamps: 1 x Citizen_CLU027_(CLU027-0304C1-503M2G2)+F15255_HEKLA-SOCKET-C_335.032lm@250mA_P=2.1686W_I=0.25A



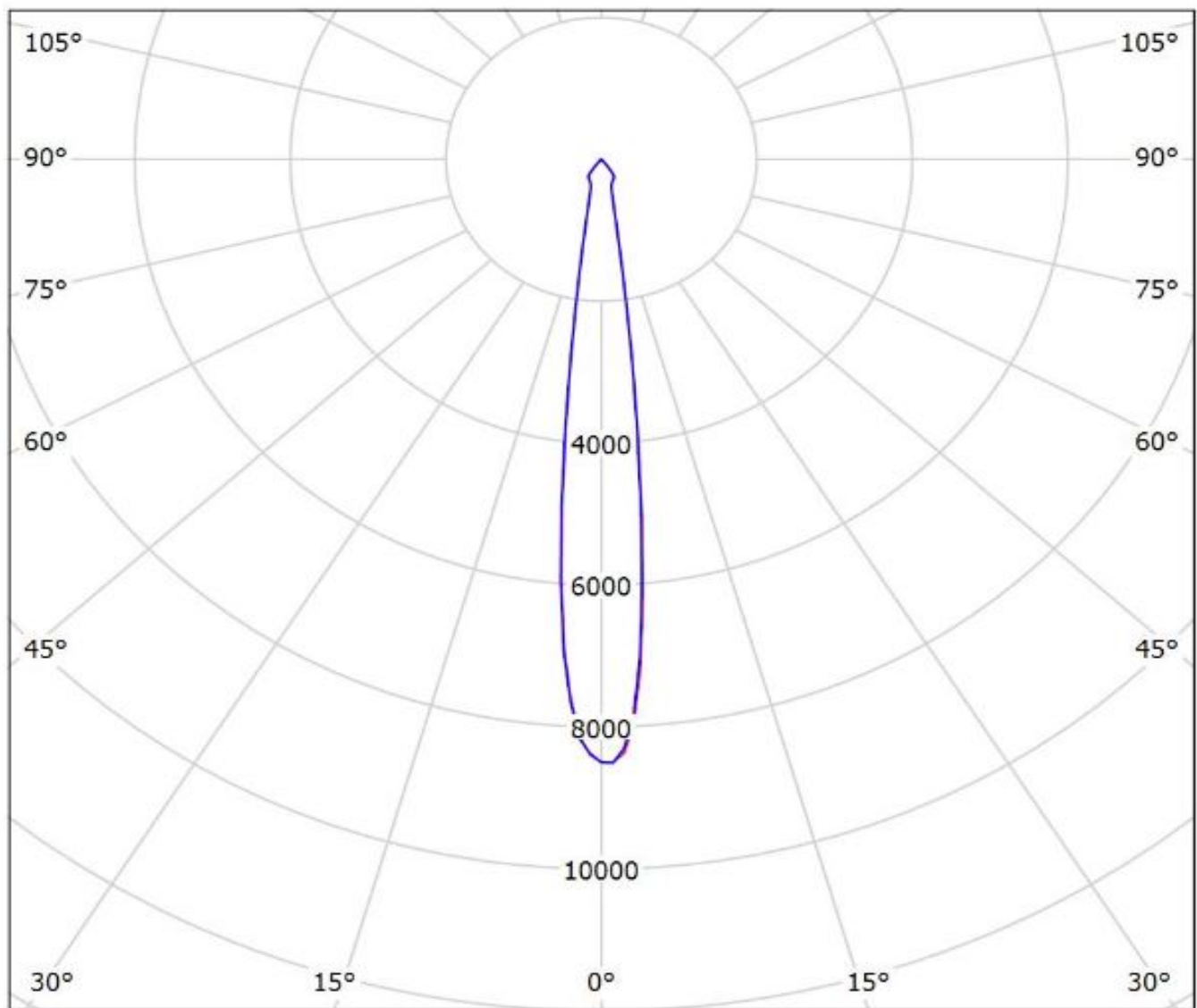
cd/klm

— C0 - C180 — C90 - C270

$\eta = 88\%$

Luminaire: Ledil F15558_MIRELLA-G2-S_(CLU700+_F15255)

Lamps: 1 x Citizen_CLU700_(CLU700-1002B8-303H5G3)+_F15255_HEKLA-SOCKET-C_705.572lm@250mA_P=7.5065W_I=0.250A



cd/klm

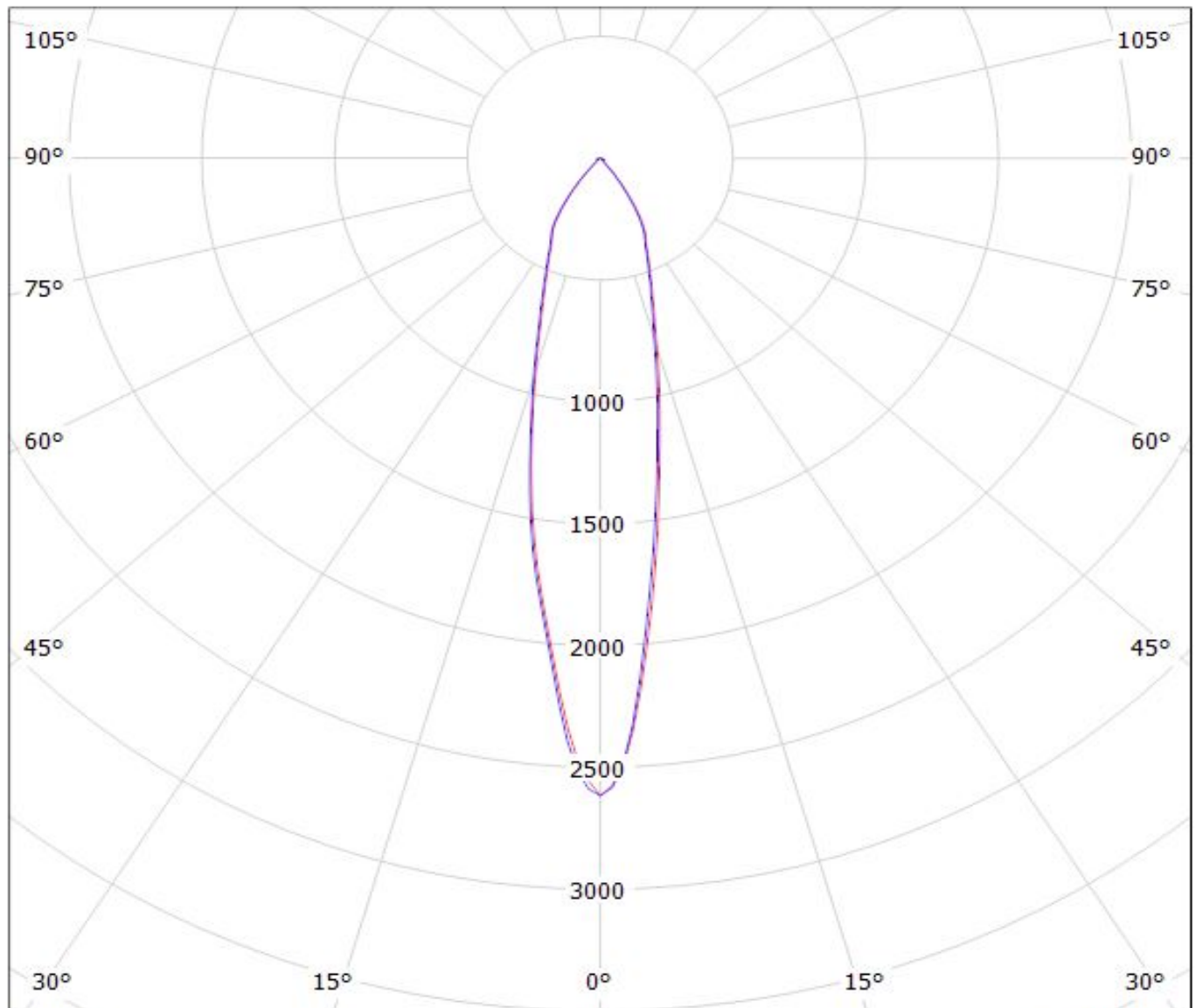
— C0 - C180

— C90 - C270

$\eta = 91\%$

Luminaire: LEDiL Oy F15558_MIRELLA-G2-S_(CLC020_057A5)

Lamps: 1 x Citizen_CLC020-057A5_913.53lm@360mA_P=12.9104W_I=0.25A



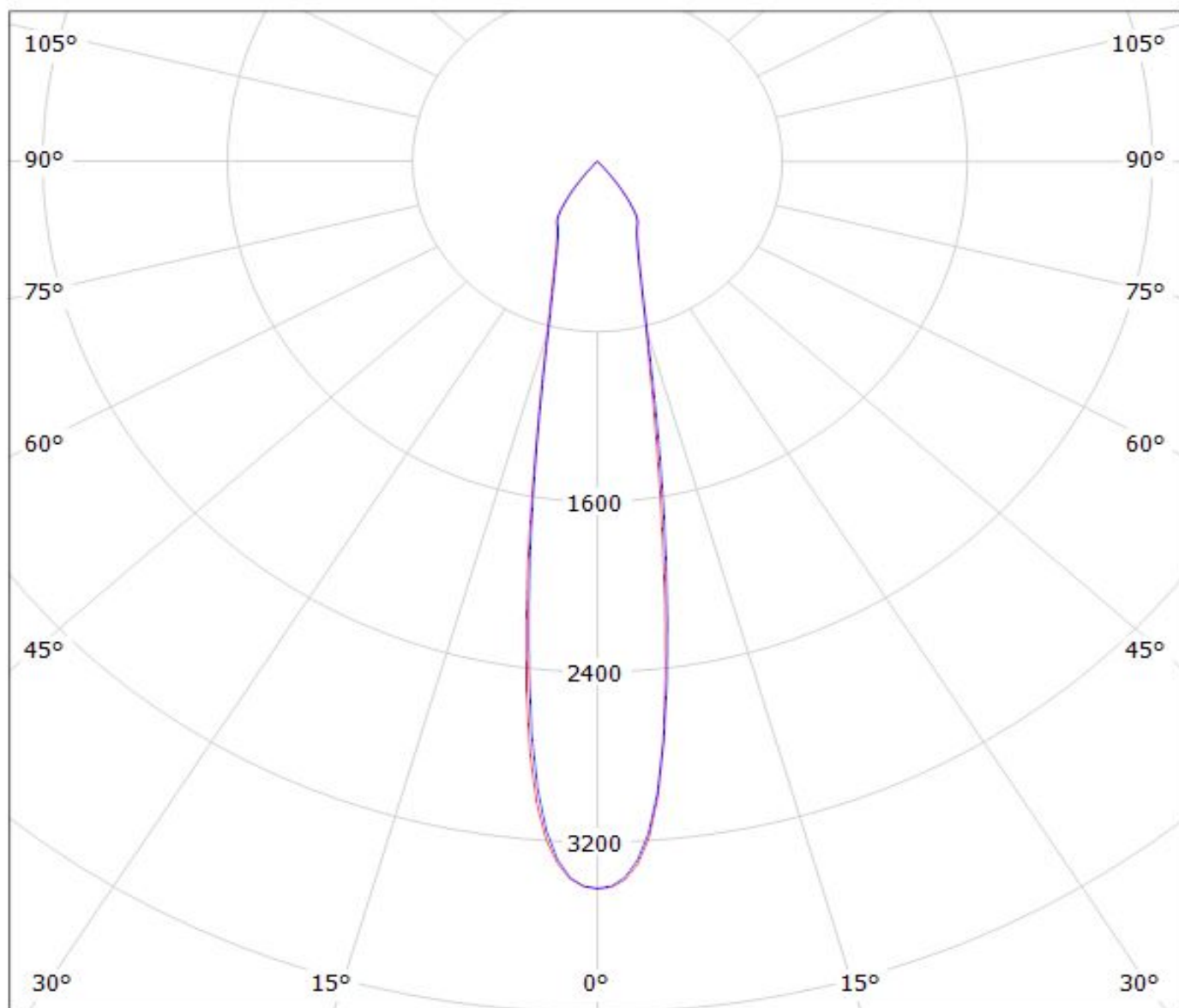
cd/klm

— C0 - C180

— C90 - C270

$\eta = 81\%$

Luminaire: LEDiL Oy F15558_MIRELLA-G2-S_(CLU710)+F15859
Lamps: 1 x Citizen_CLU710_(1204B8-273M2G1)
+F15859_1101.12lm@250mA_CCT=2700K_P=8.52542W_U=34.112V



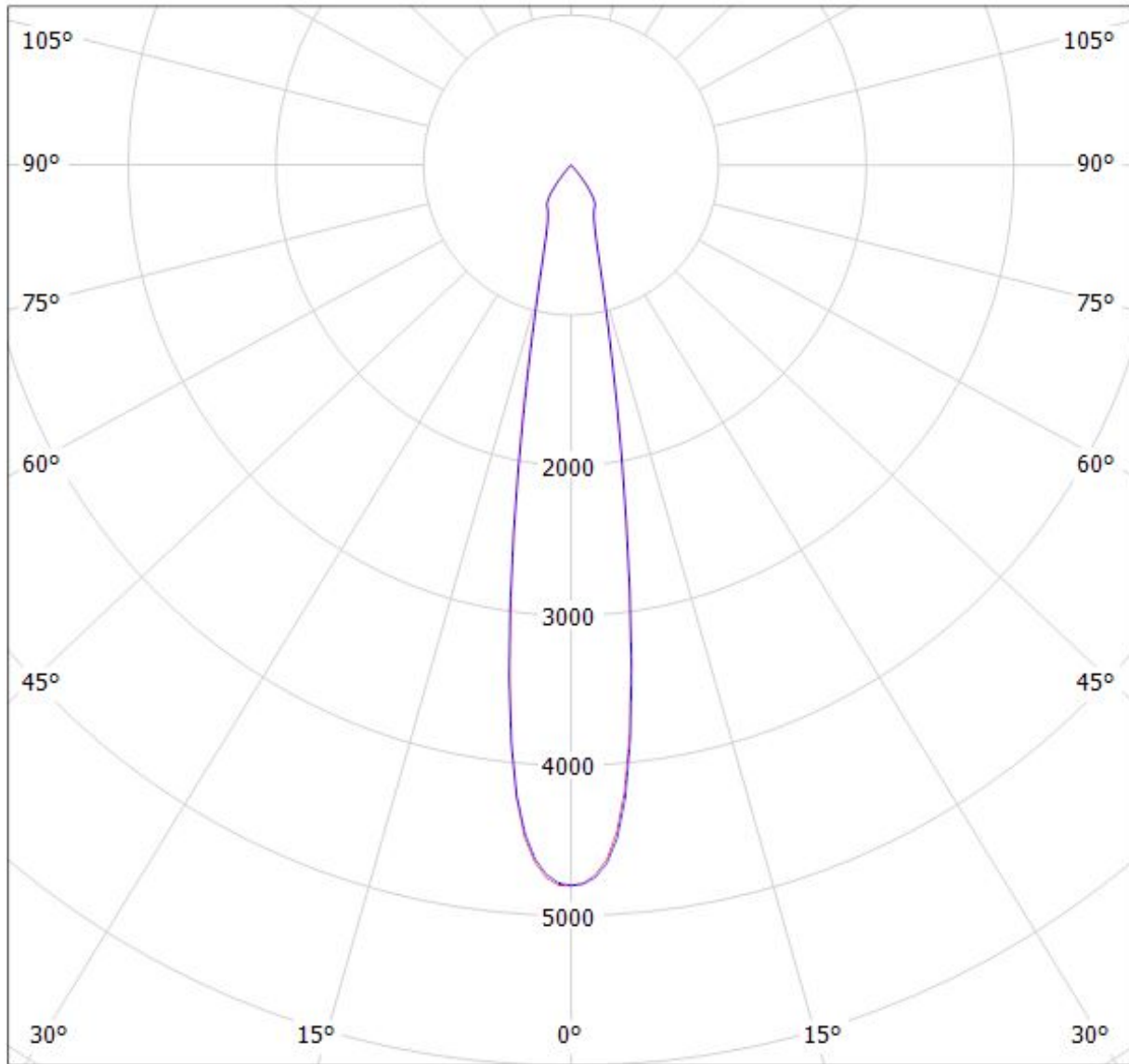
cd/klm

— C0 - C180 — C90 - C270

η = 86%

Luminaire: LEDiL Oy F15558_MIRELLA-G2-S_(CXA1520+F15256)

Lamps: 1 x Cree_CXA1520_(-30F-N4-N0H-00001)+F15256_998.951lm@250mA_CCT=3070K_P=8.60161W_I=0.25A



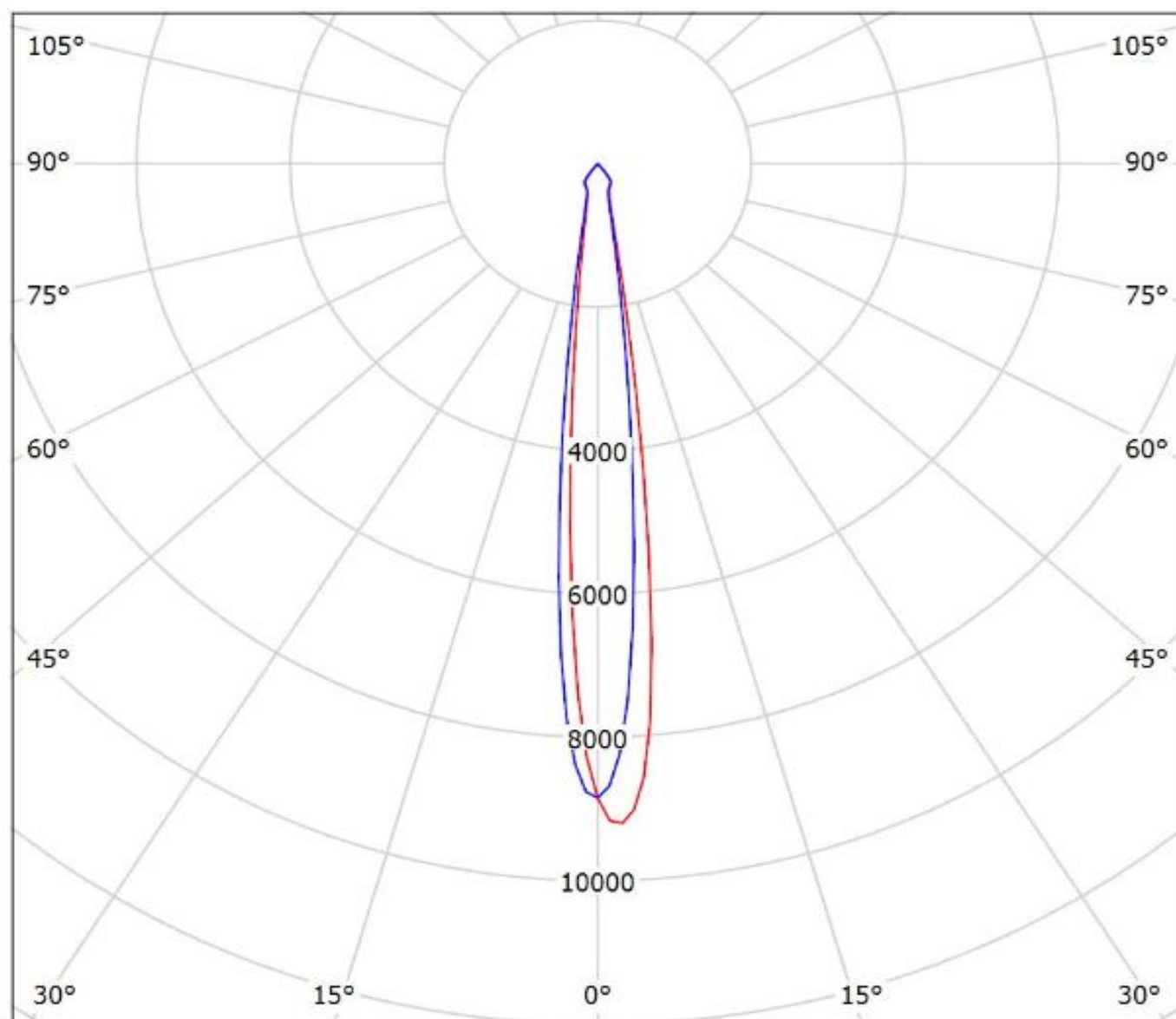
cd/klm

$\eta = 93\%$

— C0 - C180 — C90 - C270

Luminaire: Ledil F15558_MIRELLA-G2-S_(CXA1310+_F15956)

Lamps: 1 x Cree_CXA1310_(CXA1310-30H-G4-F0Y-00001)+_F15956_HEKLA-SOCKET-J_345.939lm@250mA_P=4.27579W_I=0.250A

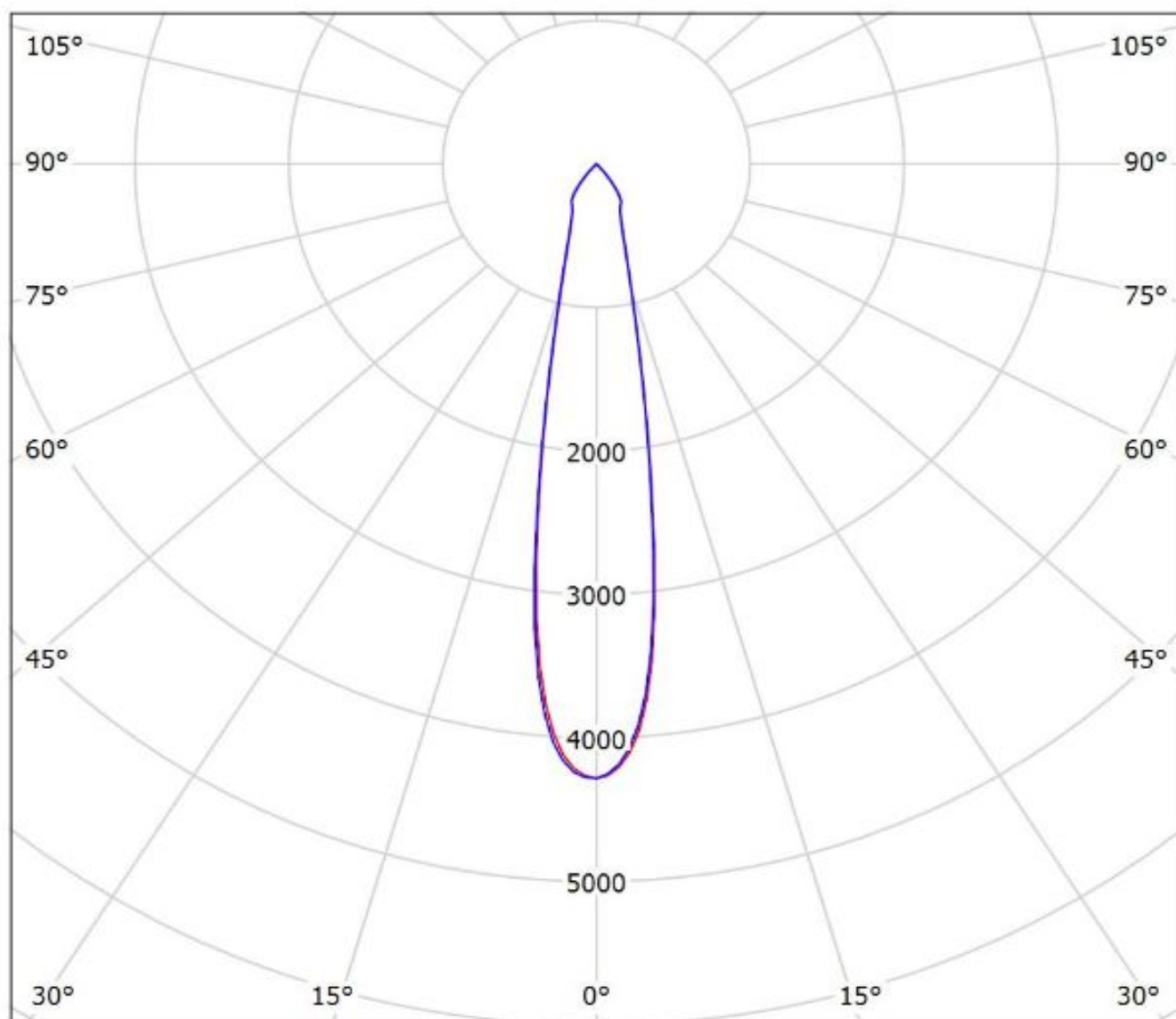


cd/klm

— C0 - C180 — C90 - C270

$\eta = 93\%$

Luminaire: Ledil F15558_MIRELLA-G2-S_(CoB_1203+_F15858)
Lamps: 1 x Luxeon_CoB_1203_(LHC1-3080-1203)_+_F15858_HEKLA-SOCKET-
H_993.26lm@250mA_P=8.71526W_I=0.250A



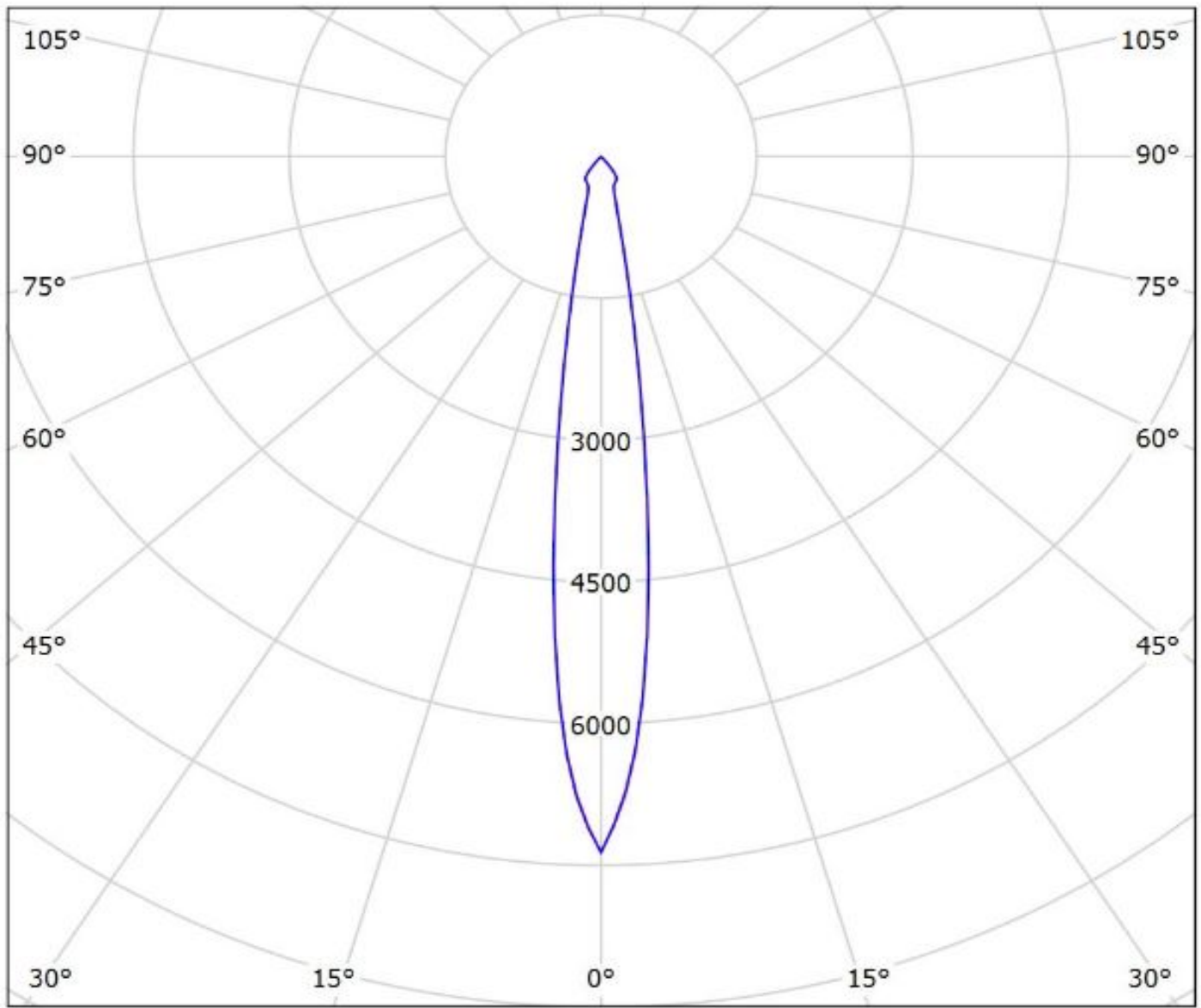
cd/klm

— C0 - C180 — C90 - C270

η = 90%

Luminaire: Ledil Oy F15558_MIRELLA-G2-S+_F15848_HEKLA-SOCKET-G_NICHIA_NTCWT012B-V2_SIMULATED

Lamps: 1 x NICHIA NTCWT012B-V2

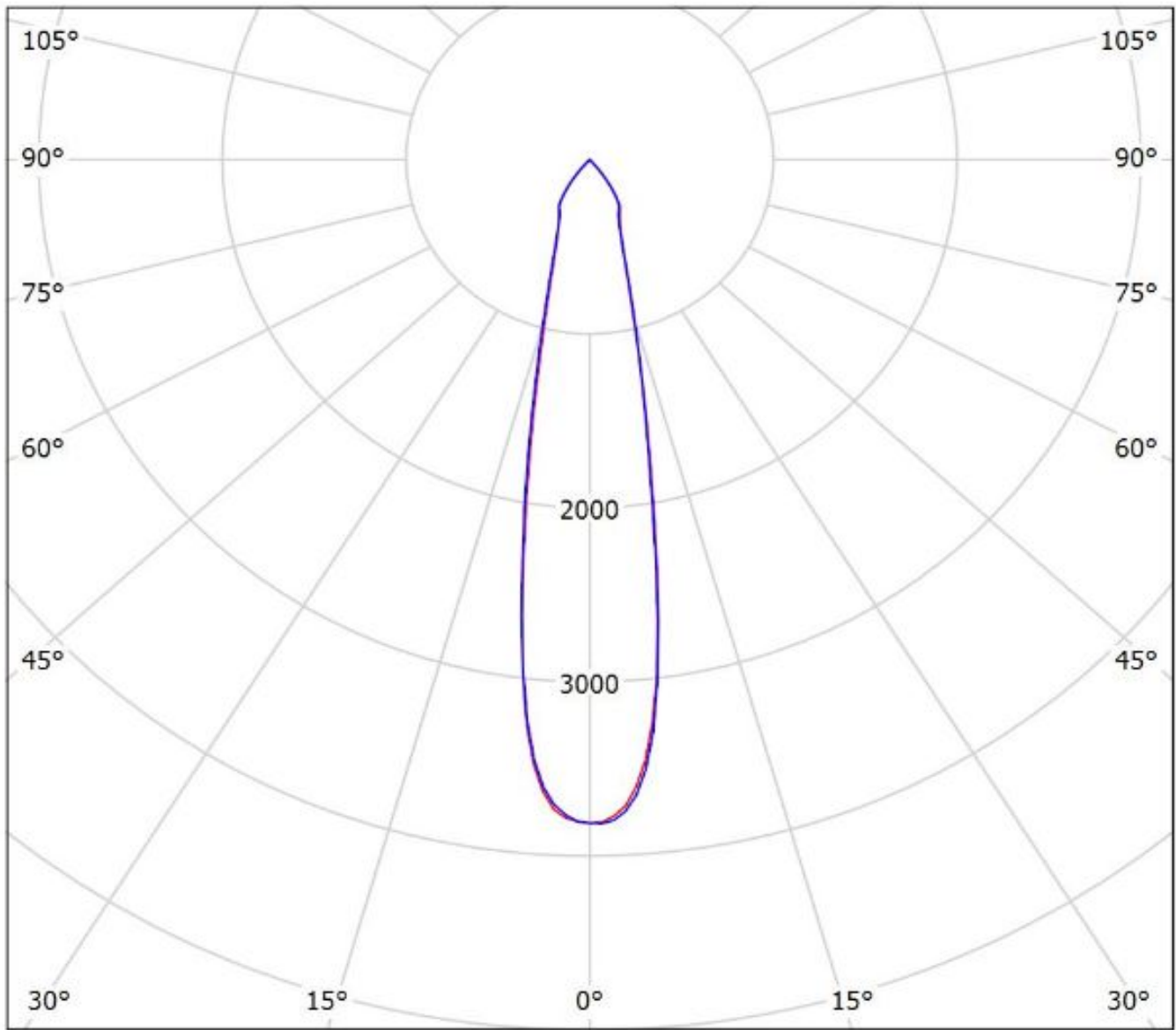


cd/klm

— C0 - C180 — C90 - C270

$\eta = 87\%$

Luminaire: Ledil F15558_MIRELLA-G2-S_(Soleriq_S9+_F15255)
Lamps: 1 x Osram_Soleriq_S9_(GW_KAFHB3.EM)+_F15255_HEKLA-SOCKET-
C_1182.71lm@250mA_P=8.81997W_I=0.250A

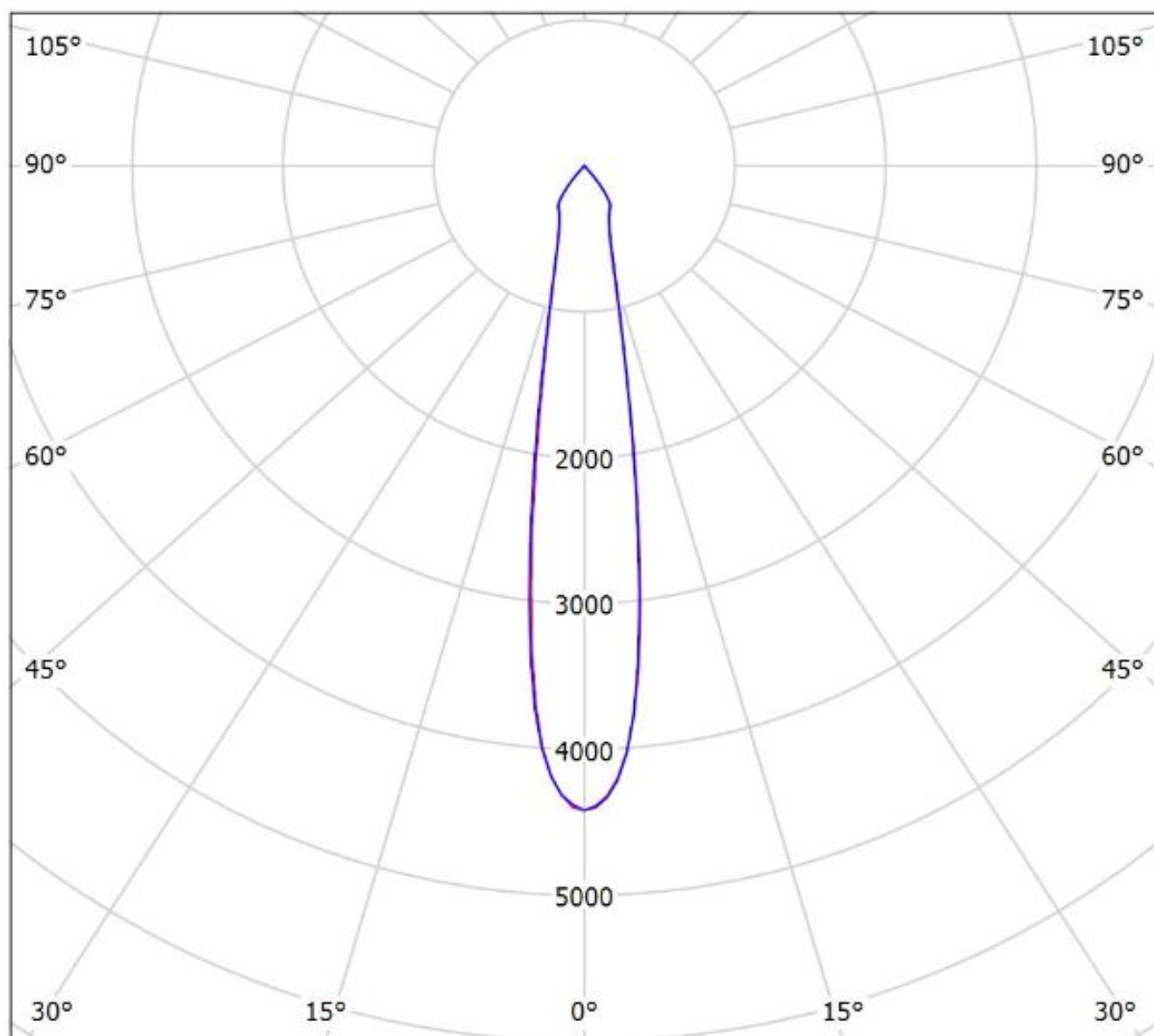


cd/klm
— C0 - C180 — C90 - C270

$\eta = 91\%$

Luminaire: Ledil F15558_MIRELLA-G2-S_(LC020C+_F15848)

Lamps: 1 x Samsung_LC020C+_F15848_HEKLA-SOCKET-G_897.413lm@250mA_P=8.45362W_I=0.250A



cd/klm

— C0 - C180

— C90 - C270

η = 90%

NOTE: The typical divergence will be changed by different color, chip size and chip position tolerance. The typical total divergence is the full angle measured where the luminous intensity is half of the peak value.

GENERAL INFORMATION

- Product series especially designed & optimized for series of LEDs.
- Special care taken to make light distribution as uniform as possible.

Note! Due to use of high power COB's with this product, special attention to proper thermal design is highly recommended. LEDiL has no liability for direct, indirect or consecutive damages arising from the LEDiL products being used outside of the recommended temperature range.