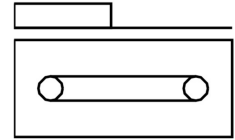
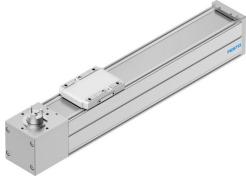


# Belt driven linear actuator ELGC-TB-KF-80-200

Part number: 8062786

FESTO



## Data sheet

Feature	Value
Drive pinion effective diameter	33.42 mm
Working stroke	200 mm
Size	80
Stroke reserve	0 mm
Toothed belt elongation	0.2 %
Toothed belt pitch	3 mm
Mounting position	Any
Guide	Recirculating ball bearing guide
Structural design	Electromechanical linear axis with toothed belt
Motor type	Stepper motor Servo motor
Symbol	00991212
Measuring principle of linear potentiometer	Incremental
Max. acceleration	15 m/s <sup>2</sup>
Max. speed	1.5 m/s
Repetition accuracy	±0.1 mm
Duty cycle	100%
RSBP classification to CD-0033	F1a
Cleanroom class	ISO Class 7
Degree of protection	IP40
Ambient temperature	0 °C ... 50 °C
2nd moment of area ly	1370000 mm <sup>4</sup>
2nd moment of area lz	1660000 mm <sup>4</sup>
Max. driving torque	4.178 Nm
Max. force Fy	900 N
Max. force Fz	2700 N
Fy with theoretical service life of 100 km (from a guide perspective only)	552 N
Fz with theoretical service life of 100 km (from a guide perspective only)	1104 N
Max. no-load resistance to shifting	24.7 N
Max. torque Mx	59.8 Nm
Max. torque My	56.2 Nm
Max. torque Mz	56.2 Nm
Mx with theoretical service life of 100 km (from a guide perspective only)	5 Nm
My with theoretical service life of 100 km (from a guide perspective only)	4 Nm

<b>Feature</b>	<b>Value</b>
Mz with theoretical service life of 100 km (from a guide perspective only)	4 Nm
Max. feed force Fx	250 N
No-load driving torque	0.413 Nm
Torsion moment of inertia It	90500 mm <sup>4</sup>
Mass moment of inertia JH per meter of stroke	0.1927 kgcm <sup>2</sup>
Mass moment of inertia JL per kg of payload	2.793 kgcm <sup>2</sup>
Mass moment of inertia JO	2.912 kgcm <sup>2</sup>
Feed constant	105 mm/U
Moving mass	901 g
Moving mass at 0 mm stroke	901 g
Slide weight	272 g
Additional weight per 10 mm stroke	73 g
Basic weight with 0 mm stroke	3500 g
Product weight	4956 g
Interface code, actuator	T46
Material of end caps	Die cast aluminum, painted
Profile material	Wrought aluminum alloy, anodized
Note on materials	Contains paint-wetting impairment substances RoHS-compliant
Cover strip material	Stainless steel strip
Drive cover material	Die cast aluminum, painted
Slide carriage material	Tempered steel
Guide rail material	Tempered steel
Belt pulley material	High-alloy stainless steel
Slide material	Die-cast aluminum
Toothed belt material	Polychloroprene with glass fiber