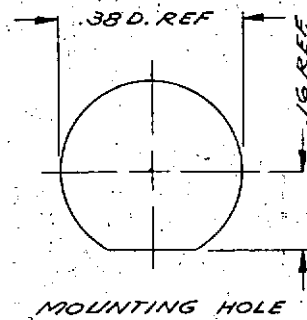
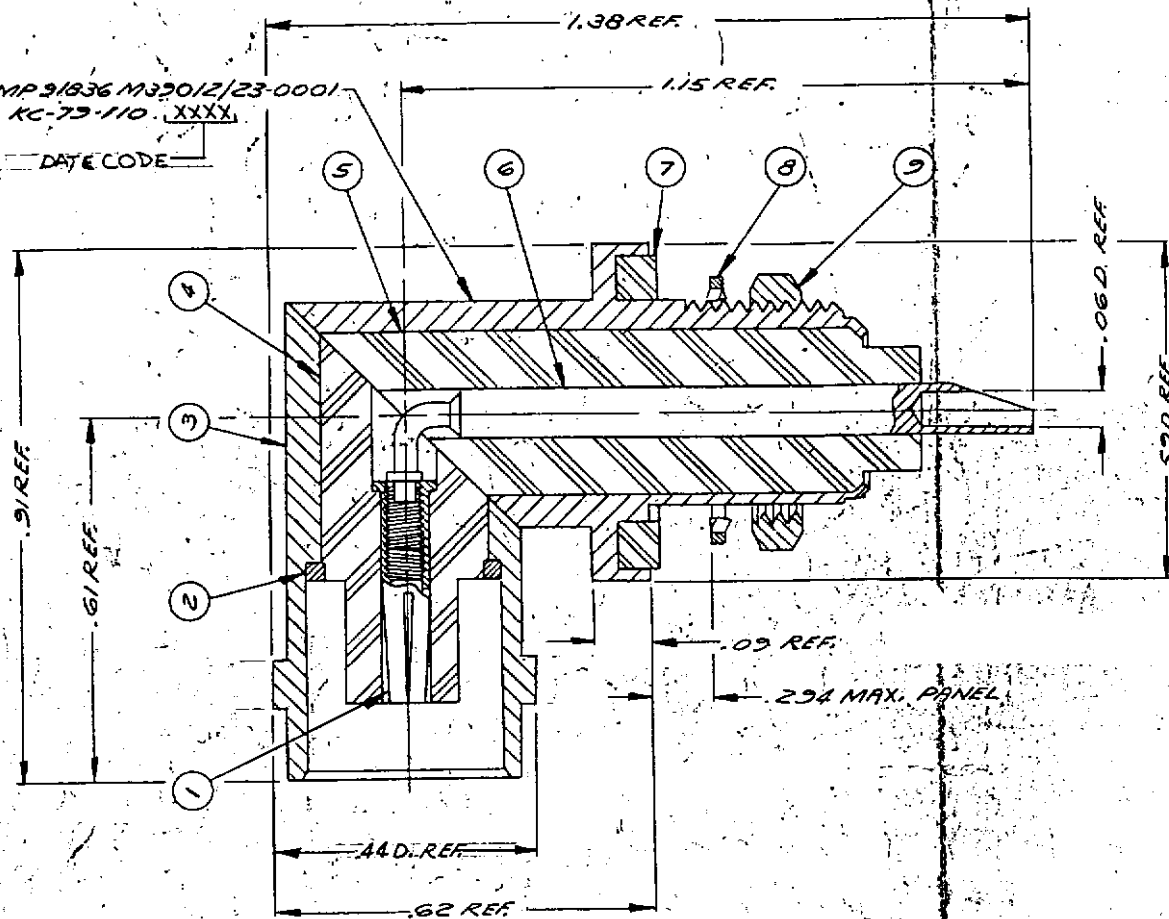


STAMP 31836 M39012/23-0001  
KC-79-110 XXXX

DATE CODE



M39012/23-0001

REVISIONS	
ISSUE	CHANGES
0	ER 10589 CC 8 DEC 71
1	CN 12429A JL 17 JUL 73
2	CN 23168 E JEP 30 MAR 82
3	CN 32297 A LNM 15 JUN 90

MASTER  
S-D

KC-79-110

REF: SUPERSEDES 116-1028A

FINISH	SPEC.
MATL.	SPEC.

BNC RECEPTACLE

DRAWN CC DATE 19 OCT 71  
APPR JC DATE 12-8-71

KINGS ELECTRONICS  
40 HARBLEDALE ROAD  
TUCKAHOE, N. Y. 10707

DRAWING NO. M39012/23-0001

QTY	REQ'D	DESCRIPTION	DRAWING NO.
9	1	HEX NUT	706-4-MC7
8	1	LOCK WASHER	C-7L-03-7-MC1
7	1	GASKET	706-3-M99
6	1	BNC ANGLE CONTACT T	
5	1	INSULATOR	
4	1	INSULATOR	
3	1	BODY ASS'Y	
2	1	RETAINING RING	
1	1	CONTACT	

UNLESS OTHERWISE SPECIFIED:

1. TOLERANCES: FRACTIONS & 2 PLACE DECIMALS ± .010  
3 PLACE DECIMALS ± .004  
T. I. R. CONCENTRICITY OF ANY 2 DIAMETERS MAY NOT EXCEED HALF THE SUM OF THEIR TOLERANCES.
2. REMOVE ALL BURRS, BREAK SHARP EDGES .005 MAX.
3. NO FILLETS PERMITTED.
4. SURFACE ROUGHNESS 63 MICROINCHES RMS MAX.
5. ALL DIMENSIONS PRIOR TO PLATING.