

6

5

4

3

2

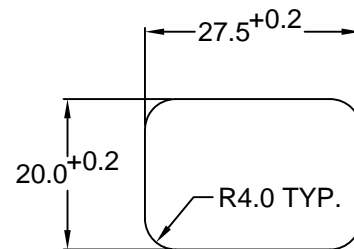
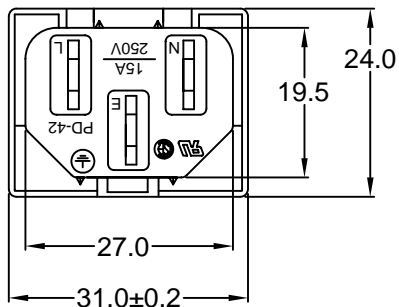
1

**MATERIAL AND FINISH:**

Insulator: Polycarbonate, UL-94V-0 rated  
Contacts: Brass, Nickel plated

**ELECTRICAL SPECIFICATIONS:**

Current rating: 10 A  
Voltage rating: 250 VAC  
Current rating: 15 A  
Voltage rating: 250 VAC



RECOMMENDED PANEL CUTOUT

**ORDERING CODE:**

42R03-3 5 - - 1 2 3

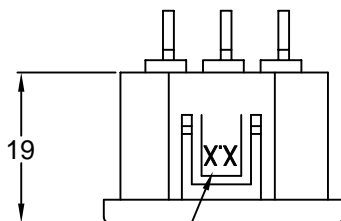
**1) COLOR**

- 1 = BLACK
- 2 = GRAY

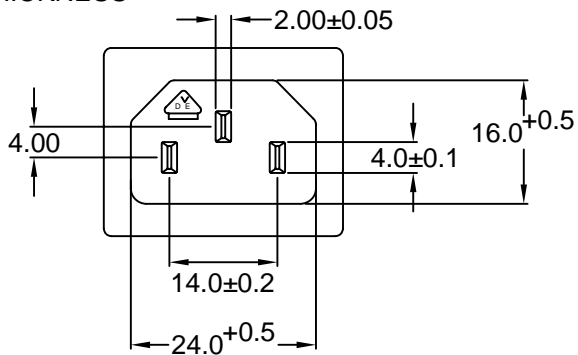
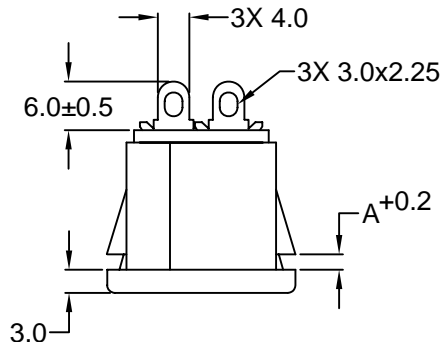
**2) ELECTRICAL CIRCUIT CONFIGURATION**

- 1 = 15A 250V 120°C 2+GROUND
- 2 = 15A 250V 70°C 2+GROUND
- 4 = 15A 250V 70°C 2 POLE

**3) PANEL THICKNESS**



REPLACE WITH CORRESPONDING PANEL THICKNESS



P/N	A	MAX. PANEL THICKNESS
42R03-3X5X-150	1.5	1.5
42R03-3X5X-200	2.0	2.0
42R03-3X5X-250	2.5	2.5

ADDITIONAL PANEL THICKNESS AVAILABLE ON REQUEST

REVISIONS	CHNG	CHECK	APPR
	CHANGE		
	DATE		
	REV		

TOLERANCE UNLESS OTHERWISE SPECIFIED		
X	±	1
X.X	±	0.4
X.XX	±	0.20
DRAWN BY	GQ	DATE: 08/16/01
CHECK BY	TD	DATE: 09/20/01
APPR BY	PB	DATE: 09/20/01

**RoHS COMPLIANT**

**Power Dynamics, Inc.**

Phone: 973 560-0019 Whippany, New Jersey Fax: 973 560-0076

PART: IEC 60320 C14 APPL. INLET; SOLDER TERMINALS; SNAP-IN

PART #: <b>42R03-3X5X-XXX</b>		SHEET 1 of 1
SIZE: A	ALL DIMENSIONS FOR REFERENCE ONLY DIMENSIONS ARE IN MILLIMETERS	REV:
SCALE: NTS		