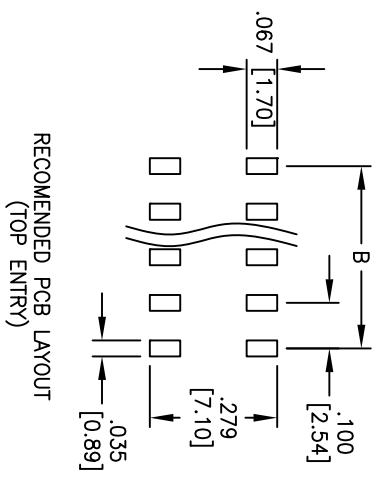
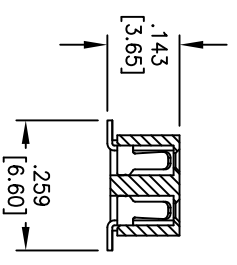
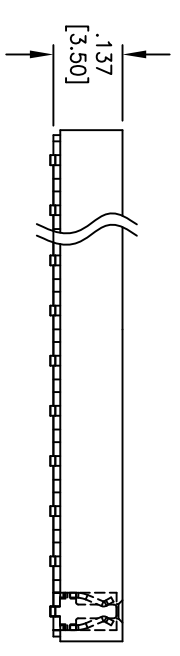
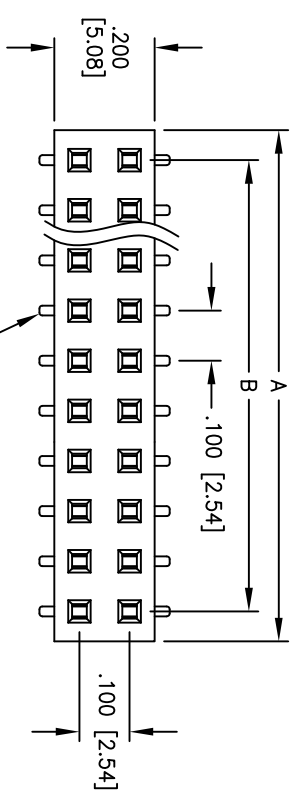
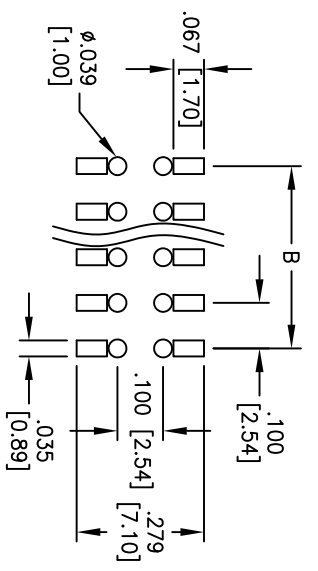


Rev	AWO #	Description	Date	Appr
-		RELEASED	7/23/10	

APPROVED: _____ TITLE: _____
 DATE: _____



RECOMMENDED PCB LAYOUT
(TOP ENTRY)



RECOMMENDED PCB LAYOUT
(BOTTOM ENTRY)

A = .100 [2.54] X No. of Positions/row + .019 [0.50]
 B = .100 [2.54] X No. of Spaces

PACKAGED ON TAPE & REEL

RECOMMENDED PCB LAYOUT
(BOTTOM ENTRY)

RECOMMENDED PCB LAYOUT
(TOP ENTRY)

SPECIFICATIONS:
Material:
 Insulator: Nylon 6T, Glass reinforced, rated UL 94V-0
 Insulator color: Black
 Contacts: Phosphor Bronze
Plating:
 Gold flash over Nickel underplate on contact area,
 Tin over Copper underplate on tails.
Electrical:
 Operating voltage: 250 VAC max.
 Current rating: 3 Amps max.
 Contact resistance: 20 mohms max. initial
 Insulation resistance: 5,000 Mohms min.
 Dielectric withstanding voltage: 500 VAC for 1 minute
Temperature Rating:
 Operating temperature: -40°C to +105°C

Environmental:
 Lead free, RoHS compliant.
 Recommended soldering temp: 260°C for 5 sec.



UNLESS OTHERWISE SPECIFIED ALL DIMENSIONS ARE INCHES [MM] TOLERANCES: EXCEPT AS NOTED INCHES	
.X	± .10 ØXX ±.10
.XX	± .020 ØXX ±.015
.XXX	± .015 ØXXX ±.010
APPROVALS	
DRAWN	AY 7/23/10
CHECKED	AH 7/23/10
APPROVED	

ADAM TECH
 909 Railway Avenue, Union, NJ 07083
 Phone: 908-687-5000 Fax: 908-687-5710

RECEPTACLE STRIP, VERY LOW PROFILE,
 DUAL ROW, SURFACE MOUNT

SIZE	PART NO.	REV.
X	RSVL-2A-XX-SG-SMT-TR	-
REF: S0002T	SCALE: NPS	SHEET 1 OF 1