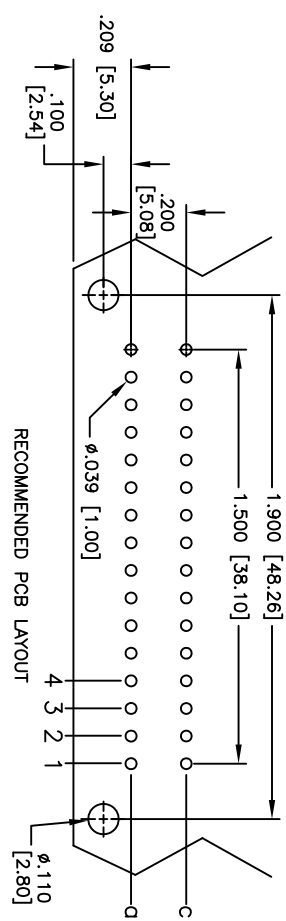
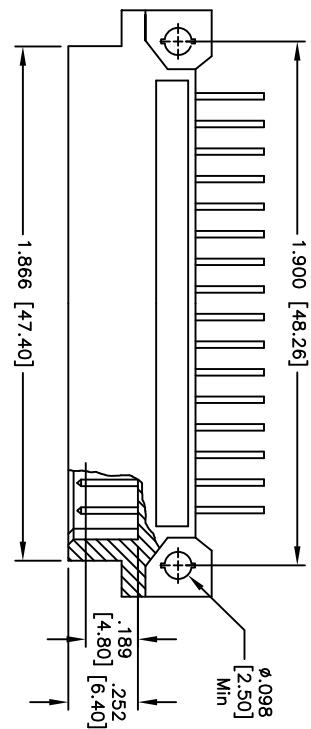
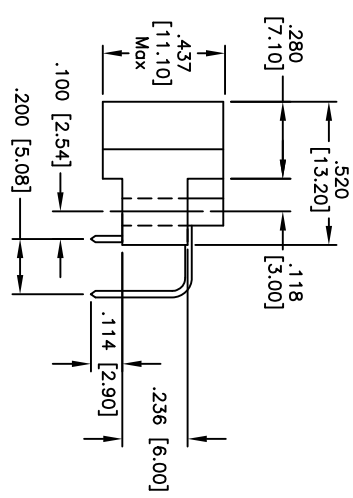
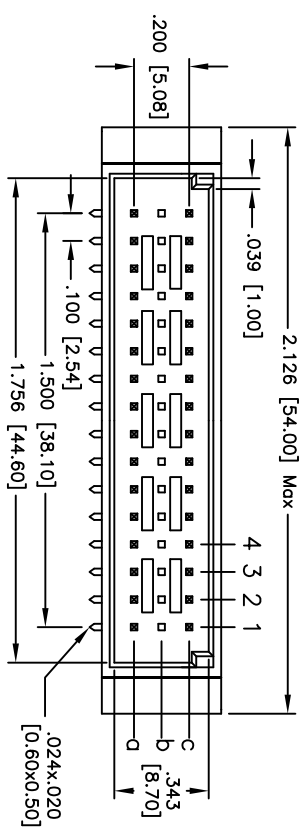


Rev	AWO #	Description	Date	Appr
-		RELEASED	9/06/10	

APPROVED: _____
 DATE: _____ TITLE: _____



RECOMMENDED PCB LAYOUT



SPECIFICATIONS:
 Material:
 Insulator: PBT, glass reinforced, rated UL 94V-0
 Insulator color: Beige
 Contacts: Copper Alloy
Plating:
 X Gold over Nickel underplate on contact area,
 Tin over Copper underplate on tails.
 (See chart for thickness)

"X"	PLATING	CLASS
1	30 u" Gold	1
2	15 u" Gold	2
3	Gold Flash	3

Electrical:
 Current rating: 2 Amps max
 Contact resistance: 20 mohms max
 Insulation resistance: 1000 Mohms min
 Dielectric withstanding voltage: 1000 VAC for 1 minute

Temperature Rating:
 Operating temperature: -55°C to +105°C
 Environmental:
 Lead free, RoHS compliant.
 Recommended soldering temp: 235°C for 5 sec.



UNLESS OTHERWISE SPECIFIED
 ALL DIMENSIONS ARE INCHES [MM]
 TOLERANCES: EXCEPT AS NOTED
 INCHES
 .X ±.10
 .XX ±.020
 .XXX ±.015
 HOLES
 Ø.X ±.10
 Ø.XXX ±.015
 APPROVALS
 DRAWN DY 9/06/10
 CHECKED
 APPROVED

ADAM TECH
 909 Ratway Avenue, Union, NJ 07083
 Phone: 908-687-5000 Fax: 908-687-5710
 TITLE: DIN TYPE HALF C MALE, 32 PIN LOADED
 3 ROW RIGHT ANGLE, ROW A&C LOADED

SIZE	PART NO.	REV.
X	DIN-32MR-S32-A1CX	-

REF: S00058T SCALE: NTS SHEET 1 OF 1