

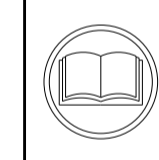
ATLANTIC VERSION TERMINATOR INTERFACE ADAPTER	PART NUMBER	REVISION	DESCRIPTION	FEED TYPE	APPLICATOR STYLE CONVERSION CHART						
					CONVERT TO	PART NUMBERS REQUIRED					
	2266617-2	B	FINE CRIMP HEIGHT ADJUST	PNEUMATIC	-	-	-	-	-	-	
	2266617-5	B	FINE CRIMP HEIGHT ADJUST	SERVO LATCH PLATE ⁴	SERVO LATCH PLATE SMART APPLICATOR	2119951-1 2161326-1	-	8-2266617-5 8-2266617-4	1901094-3	1-1752354-2	2168400-6 (QUANTITY 2)
	2266617-6	B	NON-CRIMP HEIGHT ADJUST	SERVO LATCH PLATE ⁴	PNEUMATIC FEED	2119950-1	1338683-8	5-18022-5	2119641-1	2119799-1	2063440-2
	2266617-7	B	FINE CRIMP HEIGHT ADJUST	NONE	-	-	-	-	-	-	-
	7-2266617-7	A	CRIMP TOOLING KIT	-	-	-	-	-	-	-	-

APPLICATOR DATA		
CRIMP	SIZE	TYPE
WIRE	3.56 mm [.140]	F
INSUL	6.86 mm [.270]	O

APPLICATOR INSTRUCTIONS
408-10389

TERMINAL DATA: TE TERMINAL		TE CRIMP SPECIFICATION	
TERMINAL NAME: TERMINAL			
WIRE STRIP LENGTH		INSULATION DIAMETER RANGE	
5.70-6.30 mm [.224-.248 IN]		∅	
TERMINAL APPLICATION SPECIFICATION	114-18072-1		
TERMINALS APPLIED ¹⁰			
TE TERMINAL	TE TERMINAL	TE SEAL	INSULATION RANGE
963881-1		963245-1	∅ 3.4-3.7mm [∅ .13-.15 IN]

WIRE SIZE	CRIMP HEIGHT mm [INCH]	CRIMP HEIGHT REFERENCE SETTING
4.00mm ²	2.50+/-0.05 [.098+/- .002]	7.6
3.50mm ²	2.39+/-0.05 [.094+/- .002]	9.1
3mm ² OR 12 AWG	2.29+/-0.05 [.090+/- .002]	10.5



- ¹ RECOMMENDED SPARE PARTS
- ² GREASE BEARING SURFACES LIGHTLY
- 3. LUBRICATE DAILY PER THE APPLICATOR INSTRUCTION SHEET SUPPLIED WITH THE APPLICATOR.
- ⁴ APPLICATOR SPECIFIC DATA TO BE ENTERED INTO BLANK MEMORY CHIP AT ASSEMBLY. SEE BELOW FOR PART NUMBER:
 PNEUMATIC FEED WITH "SMART APPLICATOR" CONVERSION: 8-2266617-4
 SERVO FEED WITH "FINE CRIMP HEIGHT ADJUST": 8-2266617-5
 SERVO FEED WITH "NON-CRIMP HEIGHT ADJUST": 8-2266617-6
- 5. ADJUSTMENT OF THE STRIPPER MAY BE REQUIRED WHEN MOVING THE APPLICATOR BETWEEN BENCH AND LEADMAKER APPLICATIONS.
- ⁶ APPLY PART NUMBER 1-23419-5 LOCTITE TO THREADS OF ITEM 62. APPLY PART NUMBER 2-23419-6 LOCTITE TO THREADS OF ITEM 242. FOR -6 ONLY APPLY PART NUMBER 1-23419-5 LOCTITE TO THREADS OF ITEM 37.
- ⁷ GREASE THREADS, GROOVE AND O-RING ON ITEMS 35 & 252.
- ⁸ MAGNET, ITEM 166 MUST BE ORIENTED CORRECTLY IN ORDER TO PROPERLY ACTUATE THE COUNTER.
- ⁹ CRIMP HEIGHT REFERENCE SETTING WAS THE SETTING USED WHEN THE APPLICATOR WAS QUALIFIED AT THE FACTORY. ADJUSTMENT MAY BE NECESSARY WHEN RUNNING APPLICATOR IN THE FIELD.
- ¹⁰ TERMINAL PITCH NOT COMPATIBLE WITH MECHANICAL FEED.
- ¹¹ TO CONVERT THE APPLICATOR TO A NON-CARRIER CUTTING STYLE, REMOVE ITEM 13 AND ATTACH TO THE LOCATION ON THE BACK SIDE OF THE HOUSING. REFER TO INSTRUCTION SHEET FOR ADDITIONAL INFORMATION.
- ¹² WHEN ASSEMBLING A NON CRIMP HEIGHT ADJUST APPLICATOR (-6) USE SHIMS FROM ITEM 260 TO ACHIEVE A NOMINAL SHIM HEIGHT OF 3.30.
- ¹³ THIS APPLICATOR APPLIES TERMINAL WITH A SEAL.
- ¹⁴ APPLY TORQ-SEAL IN ALLEN SOCKET TO FILL HOLE AFTER FLAT HD HAS BEEN ADJUSTED TO CORRECT HEIGHT AT QUALIFICATION. APPLY #1-23419-5 LOC-TITE TO THREADS.

¹⁵ CUT TO LENGTH AT ASSEMBLY.

***WARNING**
 ON INSTALLATION, SET WIRE DISC, ITEM 40 TO LARGEST WIRE SIZE SETTING. USE OF SETTINGS BELOW MINIMUM REQUIRED CRIMP HEIGHT SETTING WILL CAUSE DAMAGE TO CRIMP TOOLING.

- 2	2	2	2	2168083-1	SCR, SKT HD CAP, RoHS, M3 X 8.0	269	
- 1	1	1	1	1633782-2	FENCE	267	
- -	-	-	-	2119957-2	APPLICATOR SHIM PACK	260	
- 1	-	-	-	8-21084-0	O-RING, .676 ID, .070 DIA. MAT.	252	
- -	-	-	-	2119640-1	PUSH ROD, AIR FEED	250	
- -	-	-	-	2079988-1	BUSHING, LCH5-12, MISUMI	249	
- -	-	-	-	2119641-1	FEED CAM, AIR FEED	248	
- 1	-	-	-	2119798-1	DETENT PIN	247	
- 1	-	-	-	1-22279-3	SPRING, COMPRESSION	246	
- -	-	-	-	2119758-1	RAM, AMP STYLE, SIDE FEED, NON-ADJ.	245	
-77	-7	-6	-5	-2	PART NO	DESCRIPTION	ITEM NO

ATLANTIC VERSION
 Shown on sheets 1 of 4 & 2 of 4
 (Pacific version shown on sheets 3 of 4 & 4 of 4)

SET UP GAUGE	LOC	DIST	REVISIONS				
2119599-1	A	66	P LTR	DESCRIPTION	DATE	OWN	APVD
			A	RELEASED	03FEB2015	BW	TE
			B	ECR-15-008621	08JUN2015	JH	CT

- 1	1	1	1	2119082-2	CAM, SNAIL, INSULATION ADJUSTMENT	244	
- 1	1	1	1	2079764-1	WASHER, WAVE SPRING, CREST-TO-CREST	243	
- 1	1	1	1	2119083-1	RETAINER, INSULATION DIAL	242	
- 1	1	1	1	7-18023-7	SCR, SKT HD CAP M3 X 4.0	241	
- -	-	-	-	2168400-6	SHCS, LOW HEAD, RoHS, M5 X 16	240	
- -	-	-	-	2119580-1	MECHANICAL FEED ASSEMBLY	239	
- -	-	-	-	2063440-2	AIR FEED MODULE	238	
- -	-	-	-	2119740-2	TAG, IDENTIFICATION	213	
- -	-	-	-	1901094-3	SPACER, FEEDER	198	
- -	-	-	-	21045-3	RING, RETAIN, EXTERN, 3/16 CRESCENT	172	
- 1	1	1	1	994969-1	MAGNET, RARE EARTH HIGH ENERGY	166	
- REF	REF	REF	REF	994970-2	COUNTER, MAGNETIC	164	
- -	-	-	-	240638-1	SPRING, FEED FINGER	163	
- -	-	-	-	3-23627-7	PIN, RETAIN, GRVD, 3/16 X .854	137	
- -	-	-	-	2119799-1	HOLDER, FEED FINGER, AF	136	
- -	REF	REF	-	SEE NOTE 4	MEMORY CHIP, PROGRAMMED	135	
- -	-	-	-	1633743-1	SERVO FEED LATCH ASM	133	
- -	REF	REF	-	2119944-1	FEED FINGER ASSEMBLY, SF	117	
- 1	1	1	1	1-690438-0	FRONT STRIP GUIDE	96	
- 1	1	1	1	318563-1	GUARD, FRONT CHIP	89	
- 1	1	1	1	455888-4	SPACER, CRIMPER	82	
- 2	2	2	2	2079383-4	SCR, BHSC, RoHS (M4 X 8)	79	
- 1	1	1	1	1803075-1	EXTENSION PLATE	78	
- 1	1	1	1	2119956-1	DOCUMENTATION PACKAGE	71	
- 1	-	-	-	2119740-1	TAG, IDENTIFICATION	67	
- 2	2	2	2	2168078-1	SCREW, DRIVE, RH, RoHS, 2 x .188	66	
- 1	-	-	-	2119793-1	LIMITER, ADJUSTMENT BOLT	63	
- 3	-	-	-	992763-5	SCR, SET, SOC, CONE POINT, M3 X 4.0	62	
- 1	1	1	1	2079383-4	SCR, BHSC, RoHS (M4 X 8)	60	
- -	-	-	-	5-18022-5	SCR, HEX HD CAP, M4 X 6.0	59	
- 1	1	1	1	1-2168083-3	SCR, SKT HD CAP, RoHS, M3 X 16	57	
- -	-	-	-	1338683-8	FEED PAWL	56	
- 4	4	4	4	2168400-1	SHCS, LOW HEAD, RoHS, M4 X 12	54	
- 2	2	2	2	2168083-9	SCR, SKT HD CAP, RoHS, M4 X 20	53	
- 1	1	1	1	5018030-1	NUT, HEX, REG, RoHS, M3	52	
- 1	1	1	1	811242-5	BUMPER, HOLD DOWN	51	
- 1	1	1	1	690753-2	SPACER, TONKER	50	
- -	-	-	-	18023-9	SCR, SKT HD CAP M4 X 6.0	49	
- -	-	-	-	2119652-1	FEED CAM, PRE FEED	48	
- -	-	-	-	2119653-1	FEED CAM, POST FEED	47	
- 1	1	1	1	1-2119656-7	APPLICATOR BASIC ASSEMBLY, SF	46	
- 1	-	-	-	2119370-1	RAM, AMP STYLE, SIDE FEED	44	
- 1	1	1	1	2079383-7	SCR, BHSC, RoHS (M8 X 25)	41	
- 1	-	-	-	2119645-1	DISC, NUMBERED FA WIRE ADJUSTMENT	40	
- 1	-	-	-	2119957-1	APPLICATOR SHIM PACK	39	
- 1	1	1	1	1-2119644-3	RAM WASHER, PRECISION	38	
- 1	1	1	1	2119085-1	FA HEAD, ATLANTIC STYLE	37	
- 1	-	-	-	2119092-1	BOLT, ADJUSTMENT	35	
- 1	1	1	1	3-1752356-3	SUPPORT, TERMINAL	34	
- 2	2	2	2	2079383-5	SCR, BHSC, RoHS (M4 X 20)	33	
- 1	1	1	1	2161328-1	HEX HEAD, FLANGED, M5 X 8mm LONG	32	
- 1	1	1	1	1320908-2	SPACER, STRIP GUIDE	30	
- 1	1	1	1	2119959-6	ASSEMBLY, STRIP GUIDE	29	
- 1	1	1	1	455888-3	SPACER, CRIMPER	28	
- 2	2	2	2	22283-1	SPRING, COMPRESSION	27	
- 1	1	1	1	240792-1	DRAG, TERMINAL	25	
- 1	1	1	1	1320928-4	STRIP GUIDE	24	
- 1	1	1	1	2168083-2	SCR, SKT HD CAP, RoHS, M4 X 8.0	21	
- 2	2	2	2	1-18028-2	WASHER, FLAT, REG M4	20	
- 1	1	1	1	1803013-1	STRIPPER, SIDE FEED	19	
- 1	1	1	1	2119806-1	INSERT, SHEAR	13	
- 1	1	1	1	3-22280-3	SPRING, COMPRESSION	12	
- 1	1	1	1	1-356885-4	STOP, SHEAR	11	
- 1	1	1	1	2119805-7	SHEAR HOLDER, FRONT	10	
- 1	1	1	1	318059-9	FLOATING SHEAR, FRONT	9	
1	1	1	1	3-1633930-0	ANVIL, COMBINATION	8	
- 1	1	1	1	5-240641-1	SPACER	7	
- -	-	-	-	-	-	6	
- 1	1	1	1	1803080-1	DEPRESSOR, SHEAR	5	
- 1	1	1	1	2-238011-1	BLOCK, CRIMPER SPACER	4	
1	1	1	1	9-2119784-9	CRIMPER, INSULATION O PREMIUM	3	
- 1	1	1	1	1-455888-7	SPACER, CRIMPER	2	
1	1	1	1	456411-9	CRIMPER, WIRE PREMIUM	1	
-77	-7	-6	-5	-2	PART NO	DESCRIPTION	ITEM NO

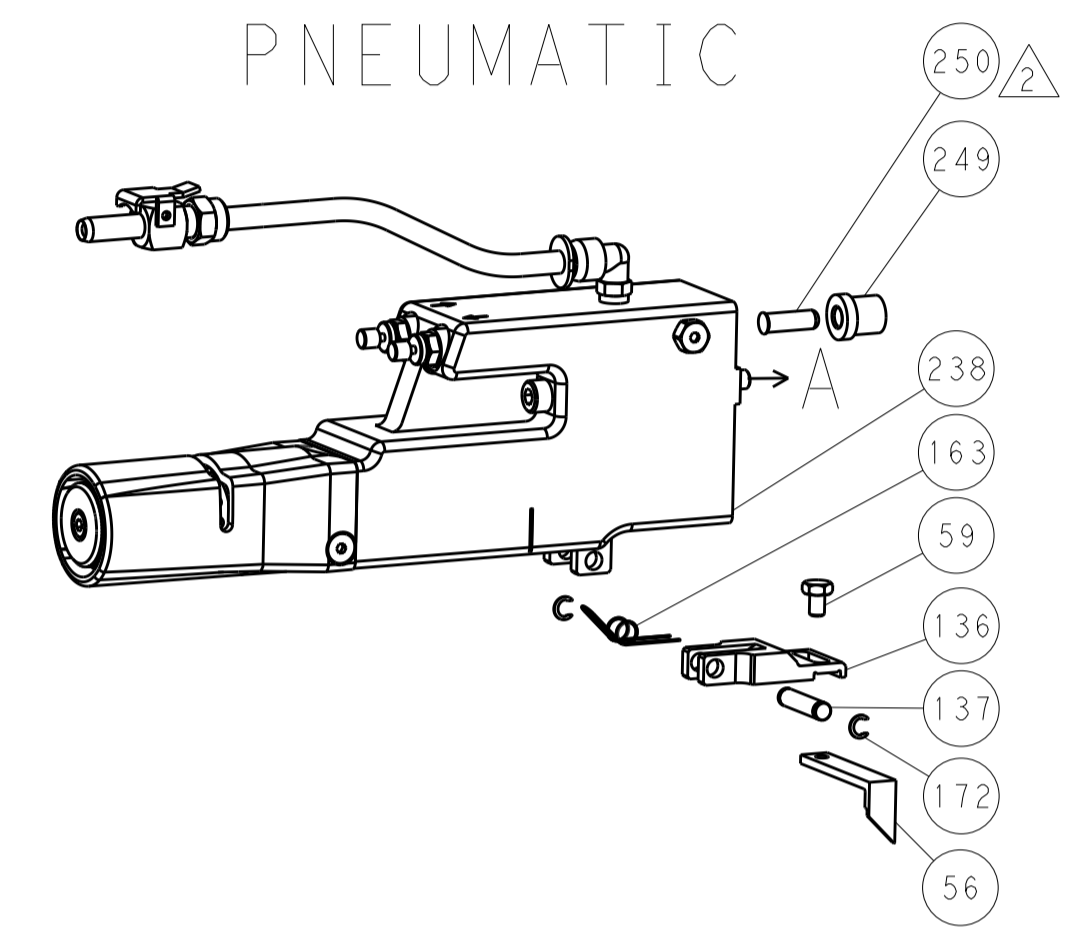
DIMENSIONS:		TOLERANCES UNLESS OTHERWISE SPECIFIED:		OWN	CHK	DATE
mm	0 PLC ±.5	1 PLC ±.13	2 PLC ±.013	B. WEAVER	T. ELBIN	11DEC2014
	3 PLC ±.013	4 PLC ±.001	ANGLES ±.0001	T. ELBIN	T. ELBIN	11DEC2014
MATERIAL	FINISH	WEIGHT	APVD	NAME		
				Ocean Side Feed Applicator		
				SIZE	CAGE CODE	DRAWING NO
				A1	00779	2266617
				Customer Accessible Production Drawing		
				SCALE	SHEET	REV
				1:2	1 of 4	B

LOC	DIST	REV	DATE	BY	APPV
A	66				

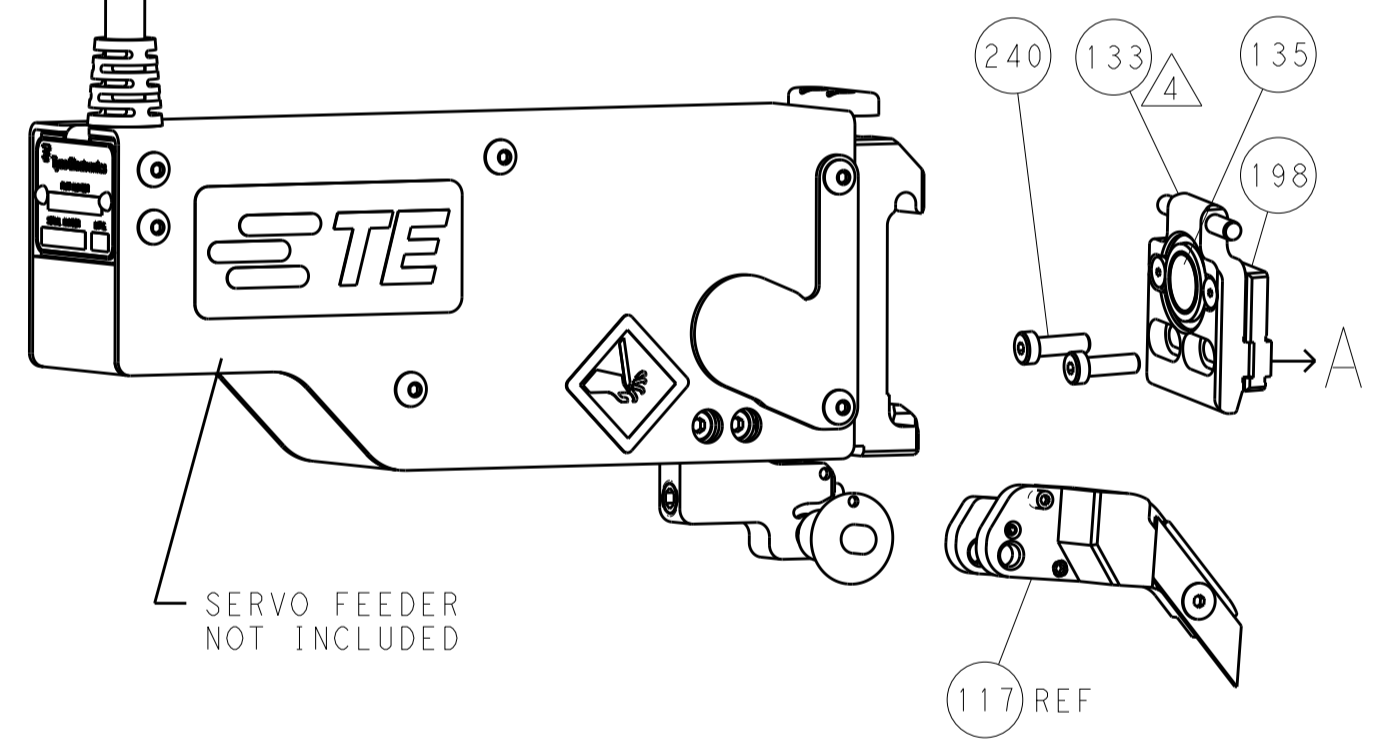
REVISIONS			
REV	DATE	BY	APPV
-	SEE SHEET 1	-	-

FEED TYPE

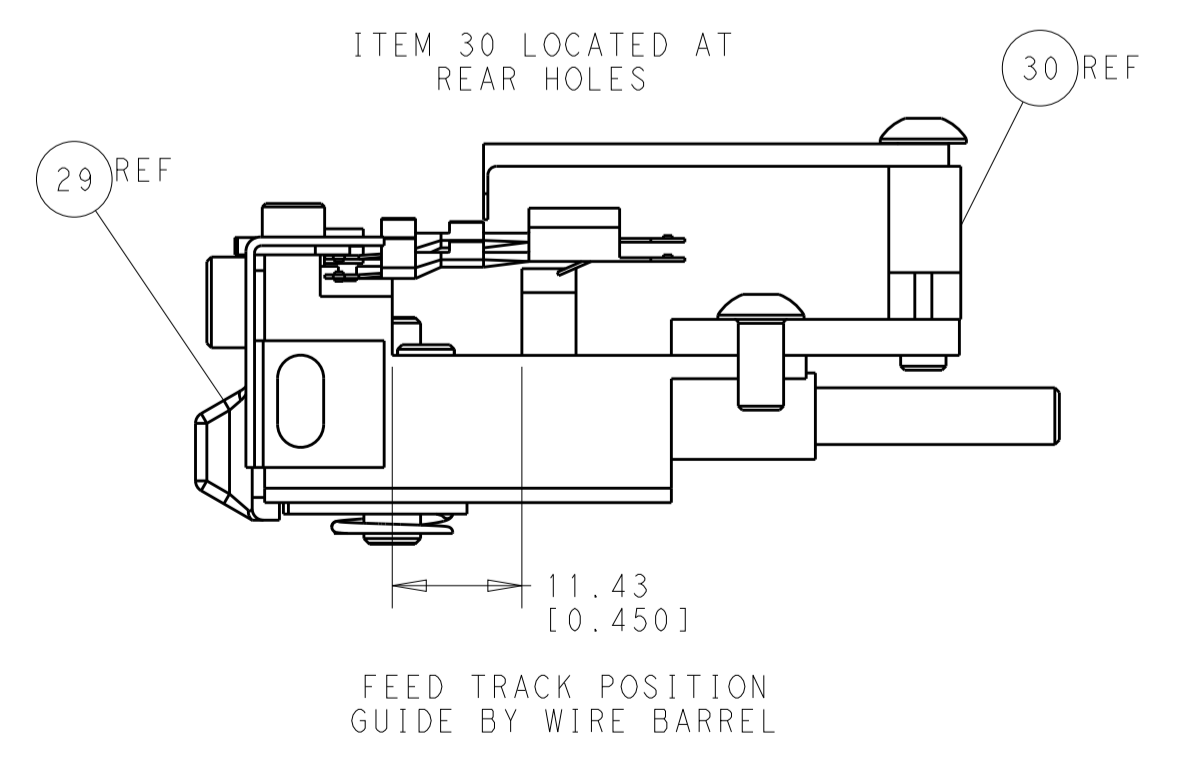
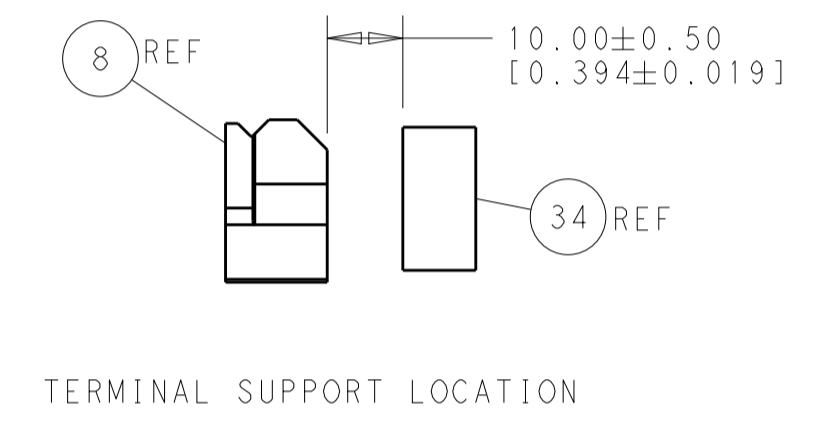
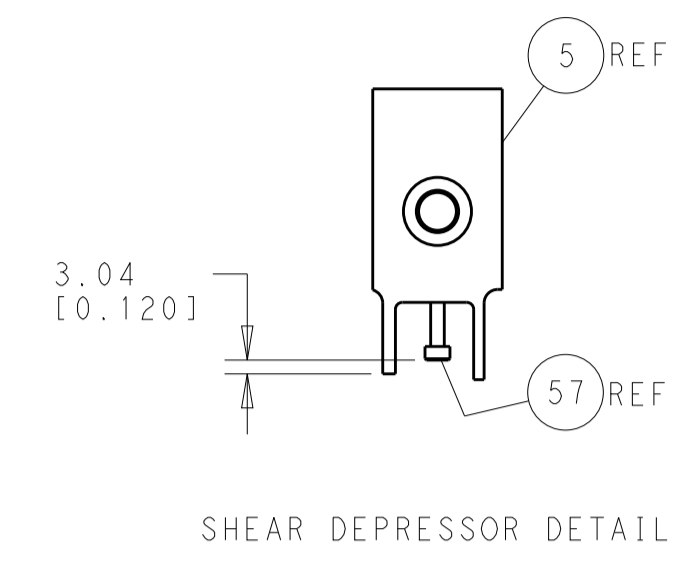
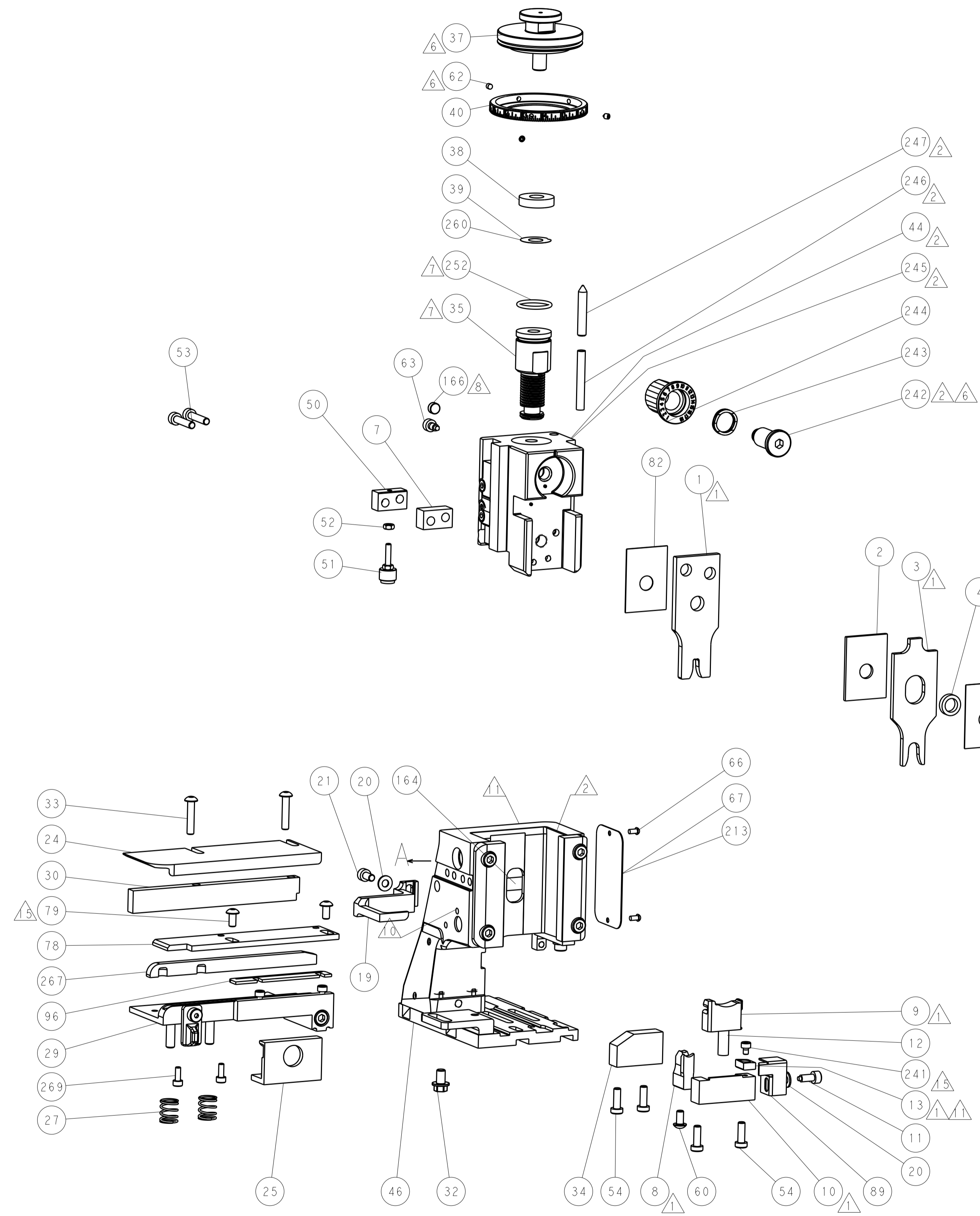
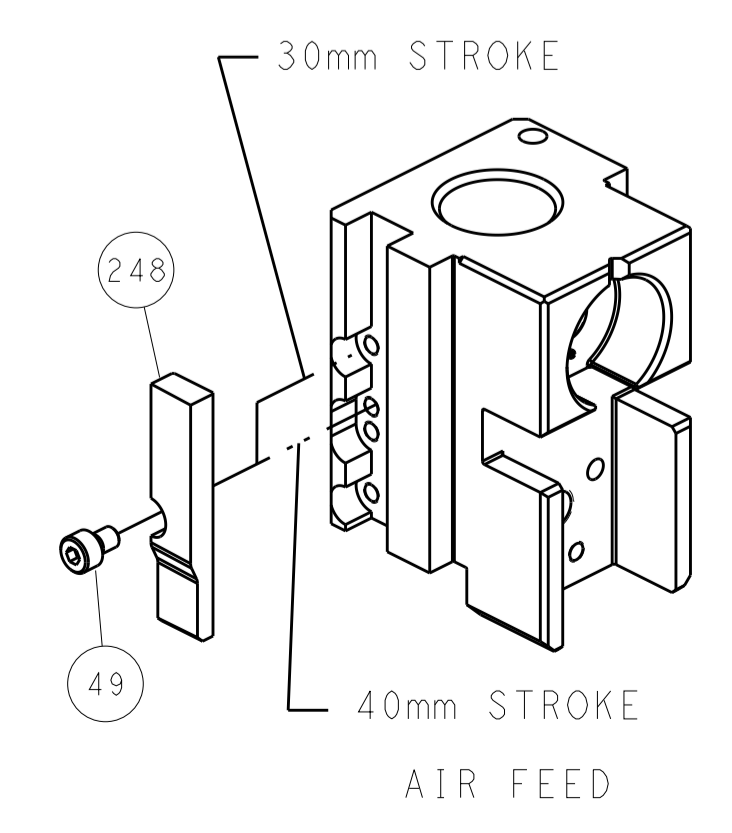
PNEUMATIC



SERVO LATCH PLATE



CAM POSITION



ATLANTIC VERSION
 Shown on sheets 1 of 4 & 2 of 4
 (Pacific version shown on sheets 3 of 4 & 4 of 4)

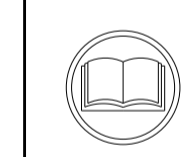
<small>THE DRAWING IS UNPUBLISHED. IT IS SUBJECT TO CHANGE AND WITHOUT WARRANTY OF ANY KIND. THE USER SHALL BE RESPONSIBLE FOR VERIFYING THE DIMENSIONS AND TOLERANCES OF THE PARTS AND ASSEMBLY. CONTACT THE MANUFACTURER FOR THE LATEST REVISION.</small>		DWN: B. WEAVER 11DEC2014 CHK: T. ELBIN 11DEC2014 APVD: T. ELBIN 11DEC2014	TE Connectivity Harrisburg, PA 17105-3608
DIMENSIONS: mm TOLERANCES UNLESS OTHERWISE SPECIFIED: 0 PLC ±0.5 1 PLC ±0.13 2 PLC ±0.13 3 PLC ±0.013 4 PLC ±0.001 ANGLES ±0.001		NAME: Ocean Side Feed Applicator PRODUCT SPEC: APPLICATION SPEC: WEIGHT: SCALE: 1:2	RESTRICTED TO: SIZE: A1 CAGE CODE: 00779 DRAWING NO: C=2266617 SHEET 2 OF 4 REV B
MATERIAL: FINISH:		Customer Accessible Production Drawing	

PACIFIC VERSION TERMINATOR INTERFACE ADAPTER	PART NUMBER	REVISION	DESCRIPTION	FEED TYPE	APPLICATOR STYLE CONVERSION CHART					
					CONVERT TO	PART NUMBERS REQUIRED				
	2-2266617-2	B	FINE CRIMP HEIGHT ADJUST	PNEUMATIC	-	-	-	-	-	-
					SERVO LATCH PLATE	2119951-1	-	8-2266617-5	1901094-3	1-1752354-2
	2-2266617-5	B	FINE CRIMP HEIGHT ADJUST	SERVO LATCH PLATE ⁴	-	-	-	-	-	-
					PNEUMATIC FEED	2119950-1	1338683-8	5-18022-5	2119641-2	2119799-1
2-2266617-7	B	FINE CRIMP HEIGHT ADJUST	NONE	-	-	-	-	-	-	
7-2266617-7	A	CRIMP TOOLING KIT	-	-	-	-	-	-	-	

APPLICATOR DATA		
CRIMP SIZE	TYPE	
WIRE 3.56 mm [1.40]	F	
INSUL 6.86 mm [2.70]	O	
APPLICATOR INSTRUCTIONS 408-10389		

TERMINAL DATA: TE TERMINAL		TE CRIMP SPECIFICATION	
TERMINAL NAME: TERMINAL			
WIRE STRIP LENGTH		INSULATION DIAMETER RANGE	
5.70-6.30 mm [2.24-.248 IN]		∅	¹⁴
TERMINAL APPLICATION SPECIFICATION	114-18072-1		
TERMINALS APPLIED ¹⁰			
TE TERMINAL	TE TERMINAL	TE SEAL	TE SEAL
963881-1		963245-1	
		INSULATION RANGE	
		∅3.4-3.7mm [∅.13-.15 IN]	

WIRE SIZE	CRIMP HEIGHT mm [INCH]	CRIMP HEIGHT REFERENCE SETTING
4.00mm ²	2.50+/-0.05 [1.098+/-0.002]	7.6
3.50mm ²	2.39+/-0.05 [1.094+/-0.002]	9.1
3mm ² OR 12 AWG	2.29+/-0.05 [1.090+/-0.002]	10.5



- ¹ RECOMMENDED SPARE PARTS
- ² GREASE BEARING SURFACES LIGHTLY
- 3. LUBRICATE DAILY PER THE APPLICATOR INSTRUCTION SHEET SUPPLIED WITH THE APPLICATOR.
- ⁴ APPLICATOR SPECIFIC DATA TO BE ENTERED INTO BLANK MEMORY CHIP AT ASSEMBLY. SEE BELOW FOR PART NUMBER:
 PNEUMATIC FEED WITH "SMART APPLICATOR" CONVERSION: 8-2266617-4
 SERVO FEED WITH "FINE CRIMP HEIGHT ADJUST": 8-2266617-5
- 5. ADJUSTMENT OF THE STRIPPER MAY BE REQUIRED WHEN MOVING THE APPLICATOR BETWEEN BENCH AND LEADMAKER APPLICATIONS.
- ⁶ APPLY PART NUMBER 1-23419-5 LOCTITE TO THREADS OF ITEM 62.
 APPLY PART NUMBER 2-23419-6 LOCTITE TO THREADS OF ITEM 242.
- ⁷ GREASE THREADS, GROOVE AND O-RING ON ITEMS 139 & 152.
- ⁸ MAGNET MUST BE ORIENTED CORRECTLY IN ORDER TO PROPERLY ACTUATE THE COUNTER.
- ⁹ CRIMP HEIGHT REFERENCE SETTING WAS THE SETTING USED WHEN THE APPLICATOR WAS QUALIFIED AT THE FACTORY. ADJUSTMENT MAY BE NECESSARY WHEN RUNNING APPLICATOR IN THE FIELD.
- ¹⁰ TERMINAL PITCH NOT COMPATIBLE WITH MECHANICAL FEED.
- ¹¹ TO CONVERT THE APPLICATOR TO A NON-CARRIER CUTTING STYLE, REMOVE ITEM 13 AND ATTACH TO THE LOCATION ON BACK SIDE OF THE HOUSING. REFER TO INSTRUCTION SHEET FOR ADDITIONAL INFORMATION.
- ¹² THIS APPLICATOR APPLIES TERMINAL WITH A SEAL.
- ¹³ APPLY TORQ-SEAL IN ALLEN SOCKET TO FILL HOLE AFTER FLAT HD HAS BEEN ADJUSTED TO CORRECT HEIGHT AT QUALIFICATION. APPLY #1-23419-5 LOC-TITE TO THREADS.

¹⁴ CUT TO LENGTH AT ASSEMBLY.

***WARNING**
 ON INSTALLATION, SET WIRE DISC, ITEM 40 TO LARGEST WIRE SIZE SETTING. USE OF SETTINGS BELOW MINIMUM REQUIRED CRIMP HEIGHT SETTING WILL CAUSE DAMAGE TO CRIMP TOOLING.

-77	-27	-25	-22	PART NO	DESCRIPTION	ITEM NO
-	2	2	2	2168083-1	SCR, SKT HD CAP, RoHS, M3 X 8.0	269
-	1	1	1	1633782-2	FENCE	267
-	1	1	1	2119782-1	FINE ADJUST HEAD ASM, PACIFIC STYLE	251
-	-	-	1	2119640-1	PUSH ROD, AIR FEED	250
-	-	-	1	2079988-1	BUSHING, LCH5-12, MISUMI	249
-	1	1	1	1-22279-3	SPRING, COMPRESSION	246
-	1	1	1	2119082-2	CAM, SNAIL, INSULATION ADJUSTMENT	244
-	1	1	1	2079764-1	WASHER, WAVE SPRING, CREST-TO-CREST	243

PACIFIC VERSION
 Shown on sheets 3 of 4 & 4 of 4
 (Atlantic version shown on sheets 1 of 4 & 2 of 4)

SET UP GAUGE	LOC	DIST	REVISIONS			
2119599-1	A	66	REV	DATE	BY	APPV
			-	SEE SHEET 1	-	-

⁶	-	1	1	1	2119083-1	RETAINER, INSULATION DIAL	242
¹⁴	-	1	1	1	7-18023-7	SCR, SKT HD CAP M3 X 4.0	241
	-	-	2	-	2168400-6	SHCS, LOW HEAD, RoHS, M5 X 16	240
	-	-	-	-	2119580-1	MECHANICAL FEED ASSEMBLY	239
	-	-	-	1	2063440-2	AIR FEED MODULE	238
	-	-	1	-	2119740-2	TAG IDENTIFICATION	213
	-	-	1	-	1901094-3	SPACER, FEEDER	198
	-	-	-	2	21045-3	RING, RETAIN, EXTERN, 3/16 CRESCENT	172
	-	1	1	1	994969-1	MAGNET, RARE EARTH HIGH ENERGY	166
	-	REF	REF	REF	994970-2	COUNTER, MAGNETIC	164
	-	-	-	1	240638-1	SPRING, FEED FINGER	163
	-	1	1	1	8-21084-1	O-RING, .801 ID, .070 DIA. MAT.	152
	-	-	-	1	2119641-2	FEED CAM, AIR FEED	151
	-	1	1	1	2119798-2	DETENT PIN	145
	-	1	1	1	2079383-8	SCR, BHSC, RoHS (M4 X 16)	144
	-	4	4	4	2168400-5	SHCS, LOW HEAD, RoHS, M4 X 20	143
	-	-	-	-	2119653-2	FEED CAM, POST FEED	142
	-	1	1	1	1-2119656-8	APPLICATOR BASIC ASSEMBLY, SF	141
	-	1	1	1	2119650-1	RAM, ASIAN STYLE, SIDE FEED	140
	-	1	1	1	2119092-2	BOLT, ADJUSTMENT	139
	-	-	-	1	3-23627-7	PIN, RETAIN, GRVD, 3/16 X .854	137
	-	-	-	1	2119799-1	HOLDER, FEED FINGER, AF	136
	-	-	REF	-	SEE NOTE 4	MEMORY CHIP, PROGRAMMED	135
	-	-	1	-	1633743-1	SERVO FEED LATCH ASM	133
	-	-	REF	-	2119944-1	FEED FINGER ASSEMBLY, SF	117
	-	1	1	1	1-690438-0	FRONT STRIP GUIDE	96
	-	1	1	1	318563-1	GUARD, FRONT CHIP	89
	-	1	1	1	455888-4	SPACER, CRIMPER	82
	-	2	2	2	2079383-4	SCR, BHSC, RoHS (M4 X 8)	79
	-	1	1	1	1803075-1	EXTENSION PLATE	78
	-	1	1	1	2119956-1	DOCUMENTATION PACKAGE	71
	-	1	-	1	2119740-1	TAG IDENTIFICATION	67
	-	2	2	2	2168078-1	SCREW, DRIVE, RH, RoHS, 2 x .188	66
	-	1	1	1	2119793-1	LIMITER, ADJUSTMENT BOLT	63
⁶	-	3	3	3	992763-5	SCR, SET, SOC, CONE POINT, M3 x 4.0	62
	-	-	-	1	5-18022-5	SCR, HEX HD CAP, M4 X 6.0	59
	-	1	1	1	1-2168083-3	SCR, SKT HD CAP, RoHS, M3 X 16	57
	-	-	-	1	1338683-8	FEED PAWL	56
	-	2	2	2	2168083-9	SCR, SKT HD CAP, RoHS, M4 X 20	53
	-	1	1	1	5018030-1	NUT, HEX, REG, RoHS, M3	52
	-	1	1	1	811242-5	BUMPER, HOLD DOWN	51
	-	1	1	1	690753-2	SPACER, TONKER	50
	-	-	-	1	18023-9	SCR, SKT HD CAP M4 X 6.0	49
	-	-	-	-	2119652-1	FEED CAM, PRE FEED	48
	-	1	1	1	2079383-7	SCR, BHSC, RoHS (M8 X 25)	41
	-	1	1	1	2119645-1	DISC, NUMBERED FA WIRE ADJUSTMENT	40
	-	1	1	1	2119957-1	APPLICATOR SHIM PACK	39
	-	1	1	1	1-2119644-3	RAM WASHER, PRECISION	38
	-	1	1	1	3-1752356-3	SUPPORT, TERMINAL	34
	-	2	2	2	2079383-5	SCR, BHSC, RoHS (M4 X 20)	33
	-	1	1	1	2161328-1	HEX HEAD, FLANGED, M5 x 8mm LONG	32
	-	1	1	1	1320908-2	SPACER, STRIP GUIDE	30
	-	1	1	1	2119959-6	ASSEMBLY, STRIP GUIDE	29
	-	1	1	1	455888-3	SPACER, CRIMPER	28
	-	2	2	2	22283-1	SPRING, COMPRESSION	27
	-	1	1	1	240792-1	DRAG, TERMINAL	25
	-	1	1	1	1320928-4	STRIP GUIDE	24
	-	1	1	1	2168083-2	SCR, SKT HD CAP, RoHS, M4 X 8.0	21
	-	2	2	2	1-18028-2	WASHER, FLAT, REG M4	20
	-	1	1	1	1803013-1	STRIPPER, SIDE FEED	19
¹	-	1	1	1	2119806-1	INSERT, SHEAR	13
	-	1	1	1	3-22280-3	SPRING, COMPRESSION	12
	-	1	1	1	1-356885-4	STOP, SHEAR	11
¹	-	1	1	1	2119805-7	SHEAR HOLDER, FRONT	10
¹	-	1	1	1	318059-9	FLOATING SHEAR, FRONT	9
¹	1	1	1	1	3-1633930-0	ANVIL, COMBINATION	8
	-	1	1	1	5-240641-1	SPACER	7
	-	-	-	-	-	-	6
	-	1	1	1	1803080-1	DEPRESSOR, SHEAR	5
	-	1	1	1	2-238011-1	BLOCK, CRIMPER SPACER	4
¹	1	1	1	1	9-2119784-9	CRIMPER, INSULATION O PREMIUM	3
	-	1	1	1	1-455888-7	SPACER, CRIMPER	2
¹	1	1	1	1	456411-9	CRIMPER, WIRE PREMIUM	1

DIMENSIONS:		TOLERANCES UNLESS OTHERWISE SPECIFIED:		DWG		REV	
mm	0 PLC ±.5	1 PLC ±0.5	2 PLC ±0.13	3 PLC ±0.013	4 PLC ±0.0013	11DEC2014	11DEC2014
	ANGLES ±.0001	FINISH					
MATERIAL		WEIGHT		SCALE			
				1:2			

STE TE Connectivity
 Harrisburg, PA 17105-3608

Ocean Side Feed
 Applicator

SIZE: A1 CAGE CODE: 00779 DRAWING NO: 2266617
 RESTRICTED TO: B

Customer Accessible Production Drawing

