

Monolithic crystal filter

MQF45.0-1500/17



Application

- 2 pol filter
- i.f.- filter
- use in mobile and stationary transceivers

Limiting values

| | | Unit | Value |
|-----------------------|--------------------|------|------------|
| Center frequency | f_0 | MHz | 45.0 |
| Insertion loss | | dB | ≤ 2.0 |
| Pass band at 3.0 dB | | kHz | ± 7.50 |
| Ripple in pass band | $f_0 \pm 5.00$ kHz | dB | ≤ 1.0 |
| Stop band attenuation | $f_0 \pm 28$ kHz | dB | ≥ 18 |
| | $f_0 \pm 500$ kHz | dB | > 40 |
| Alternate attenuation | $f_0 - 910$ kHz | dB | > 65 |

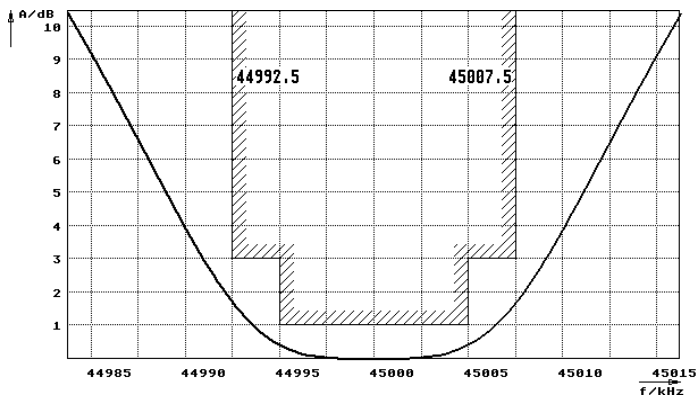
Terminating impedance Z

| | | |
|----------|--------|----------|
| R1 C1 | Ohm/pF | 200 1 |
| R2 C2 | Ohm/pF | 200 1 |

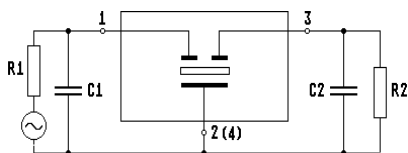
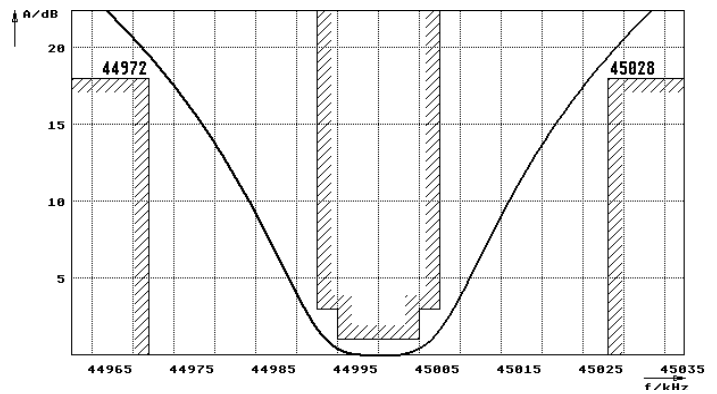
| | | |
|-----------------------|--------------------|------------|
| Operating temp. range | $^{\circ}\text{C}$ | -25... +70 |
|-----------------------|--------------------|------------|

Characteristics MQF45.0-1500/17

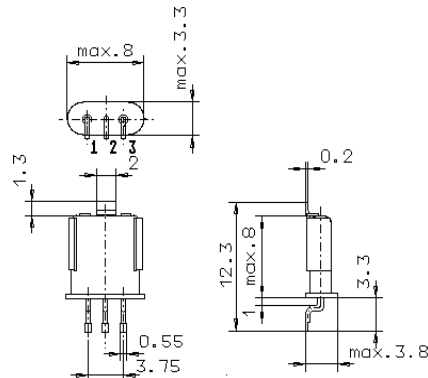
Pass band



Stop band



Pin connections: 1 Input
2 Input-E
3 Output
4 Output-E



GH9/S