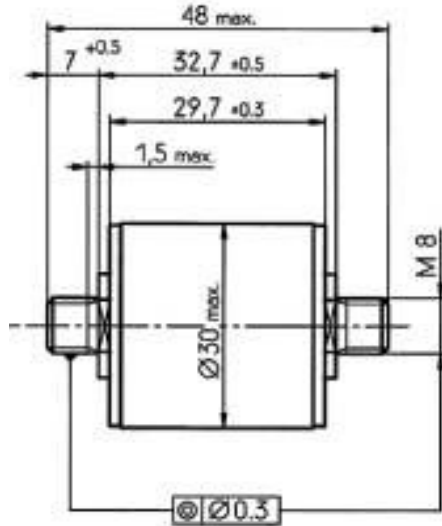


2-Electrode Gas Discharge Tubes

1: Dimension(mm)

Fast Delivery Time



2:Main Applications

- Overvoltage protection against direct lightning strike
- Power supply ClassI protection
- Surge Protection Device/Surge Protector

3:Features

- 100% Lead-Free(RoHs Compliant)
- Non-Radioactive
- Low capacitance ($\leq 4\text{pF}$)
- Fast Response-time,High Insulation Resistance.

4 Electrical Characteristics

Part Number	DC Spark-over Voltage @100V/s	Impulse Spark-over Voltage @1.2/50us, 6KV	Nominal AC discharge current 50 Hz, 0.2s, 1 shots	Insulation Resistance	Arc Voltage (at 1A)	Capacitance (1MHz)
	V	V	A	GΩ	V	PF
2B800L8	>600	<1500	300	>1	~26	≤4

5 Life Test

Item A	15 shots 8/20us	100KA
Item B	10 shot 10/350us	100KA
Item C	10shots 8/20us	200KA

Item A based on IEC61643-11, Item B based on customer's request .For each item new gas discharge tubes shall be used.

PERFORMANCE CHARACTERISTICS

