



TAI-SAW TECHNOLOGY CO., LTD.

No. 3, Industrial 2nd Rd., Ping-Chen Industrial District,
Taoyuan, 324, Taiwan, R.O.C.

TEL: 886-3-4690038 FAX: 886-3-4697532

E-mail: tstsales@mail.taisaw.com Web: www.taisaw.com

Product Specifications Approval Sheet


Product Description: SAW Filter 2040 MHz SMD 3.0X3.0 mm

TST Part No.: TA1079B

Customer Part No.: _____

Customer signature required
Company: _____
Division: _____
Approved by : _____
Date: _____

Checked by: _____ Bob Chau 

Approved by: _____ Francis Chen 

Date: _____ 5, 24, 2010

1. Customer signed back is required before TST can proceed with sample build and receive orders.
2. Orders received without customer signed back will be regarded as agreement on the specifications.
3. Any specifications changes must be approved upon by both parties and a new revision of specifications shall be released to reflect the changes.



TAI-SAW TECHNOLOGY CO., LTD.

No. 3, Industrial 2nd Rd., Ping-Chen Industrial District,
Taoyuan, 324, Taiwan, R.O.C.

TEL: 886-3-4690038 FAX: 886-3-4697532

E-mail: tstsales@mail.taisaw.com Web: www.taisaw.com

SAW Filter 2040 MHz

MODEL NO.:TA1079B

REV. NO.:1

A. MAXIMUM RATING:

1. Input Power Level: 10 dBm
2. DC Voltage : 3V
3. Operating Temperature: -40°C to +85°C
4. Storage Temperature: -50°C to +95°C

RoHS Compliant
Lead free
Lead-free soldering

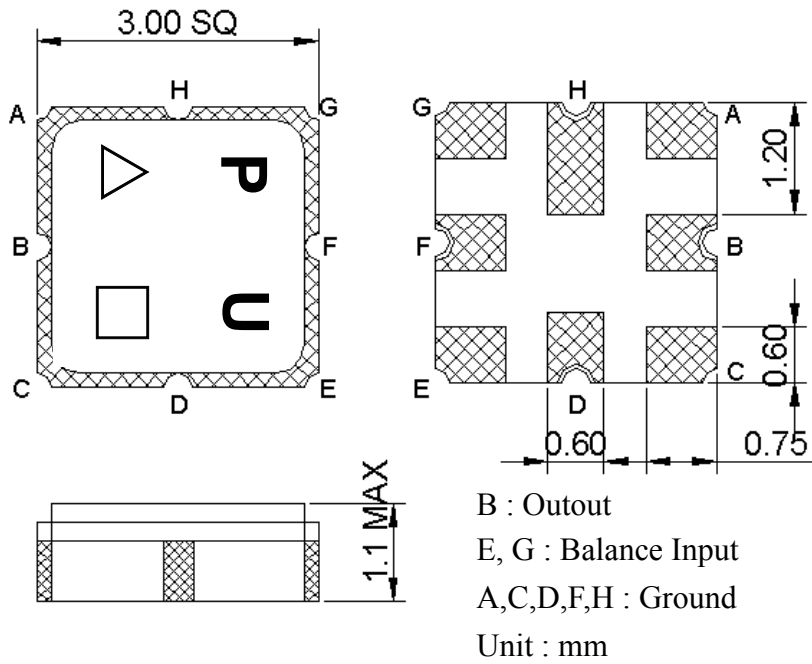
B. ELECTRICAL CHARACTERISTICS:

Terminating source impedance (balanced) : $Z_s = 200 \Omega // 15nH$

Terminating load impedance (single ended) : $Z_L = 50 \Omega$

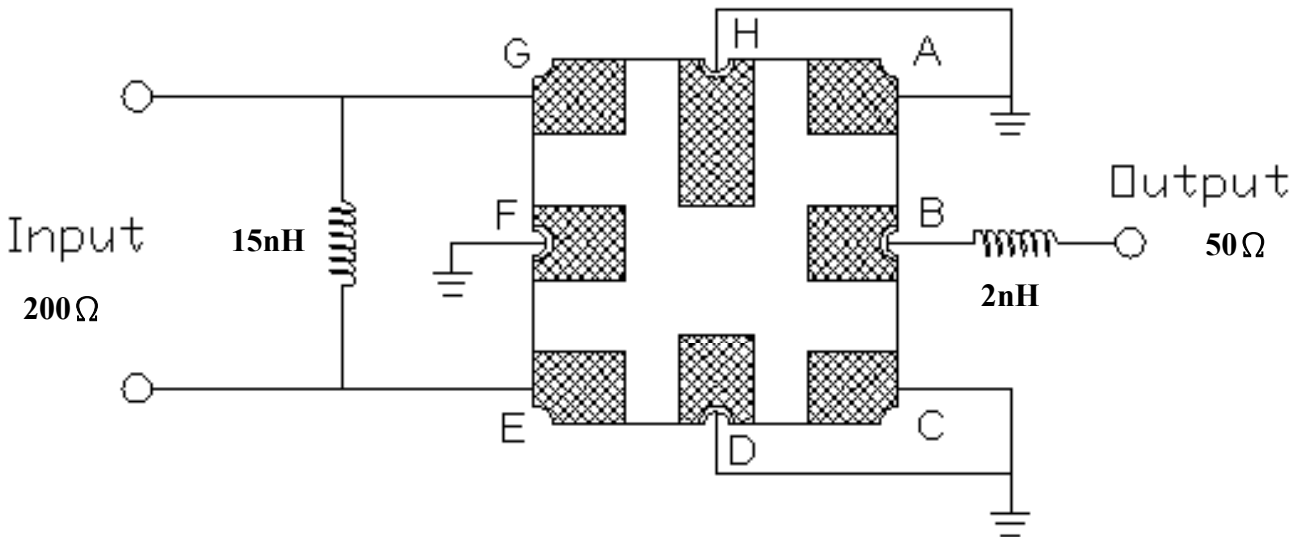
Item	Unit	Min.	Typ.	Max.	Note
Center Frequency Fc	MHz	-	2040	-	-
Bandwidth at -1.5 dB	MHz	27	89	-	-
Insertion Loss in 2026.5~2053.5 MHz	dB	-	3.1	5	-
Amplitude ripple (2026.5 MHz ~ 2053.5 MHz)	dB	-	0.4	1.5	-
I/O VSWR (2026.5 MHz ~ 2053.5 MHz)		-	1.8	2.5	-
Attenuation (reference level from 0 dB)					
50 ~ 1925 MHz	dB	42	56	-	-
2190 ~ 3000 MHz	dB	42	47	-	-
3000 ~ 4000 MHz	dB	35	41	-	-
4000 ~ 6000 MHz	dB	15	22	-	-

C.OUTLINE DRAWING:

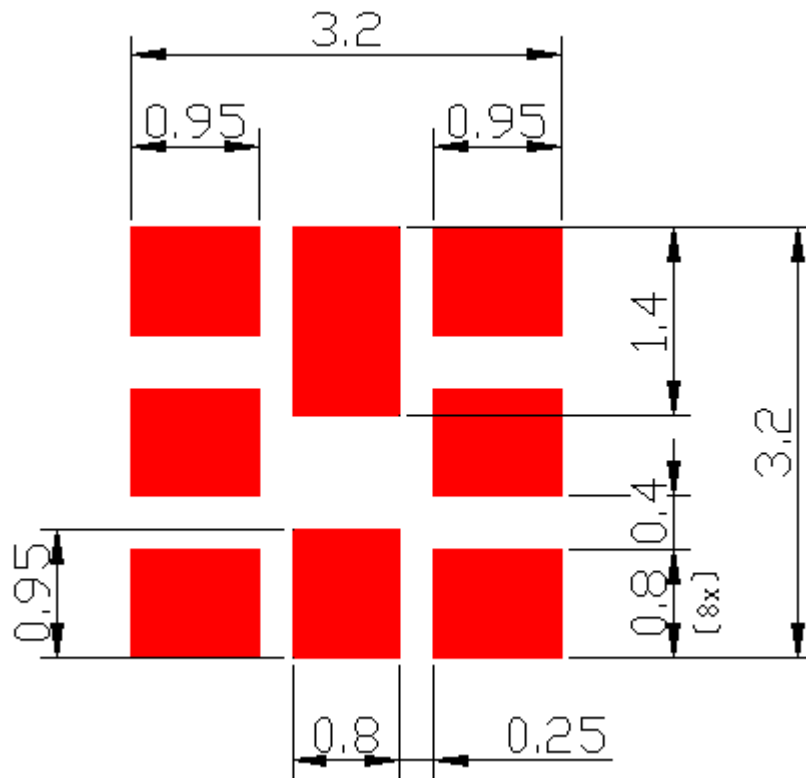


- △ : Year Code (2009->9, 2010->0,..., 2018->8)
- : Date Code (W01->A,...W26->Z,...W52->z)

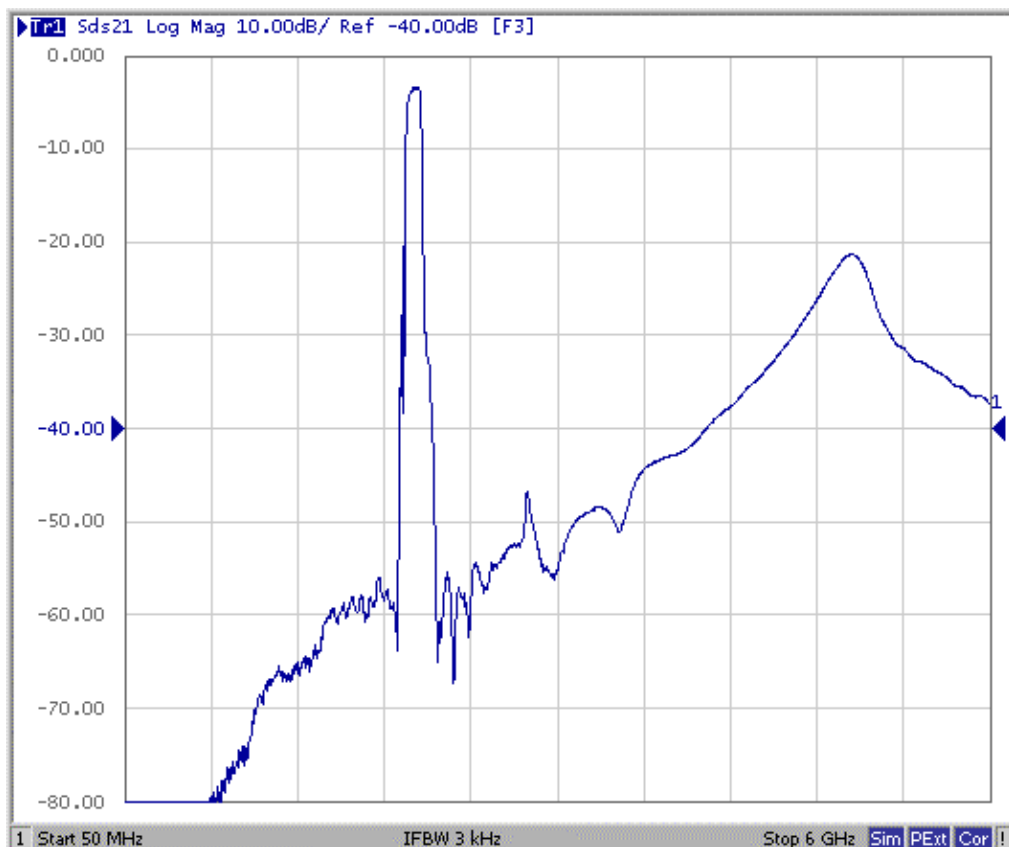
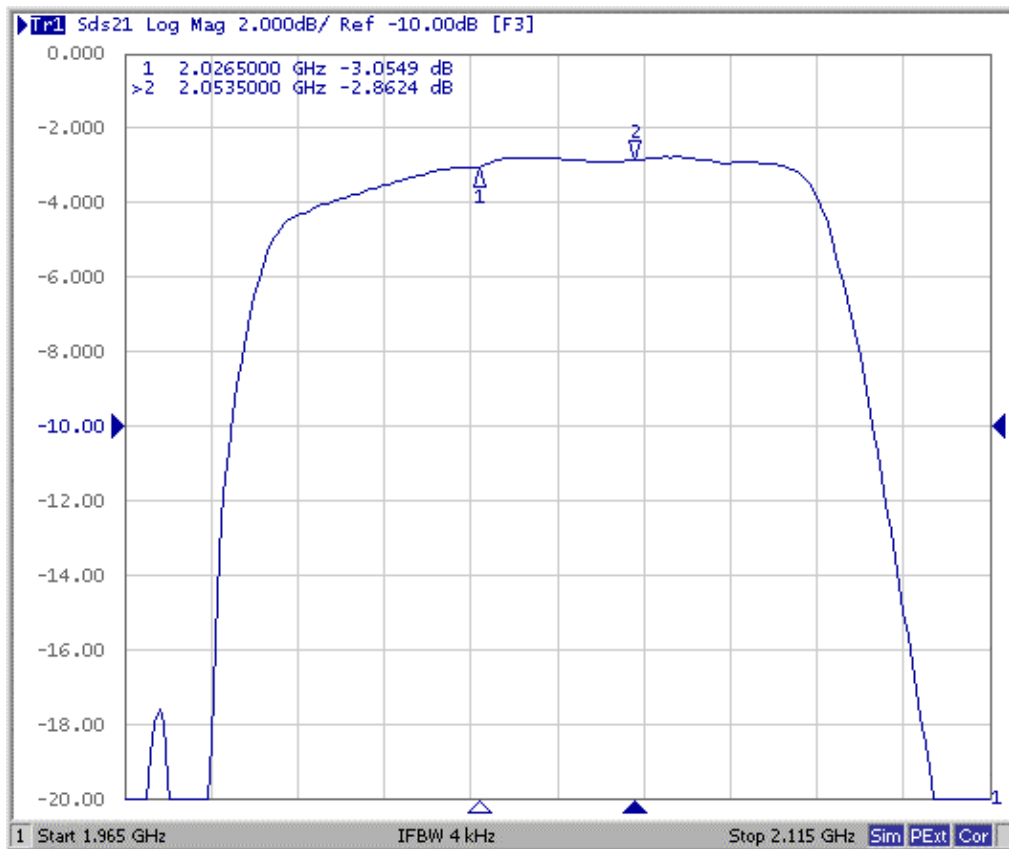
D. MEASUREMENT CIRCUIT:



E. PCB Footprint:

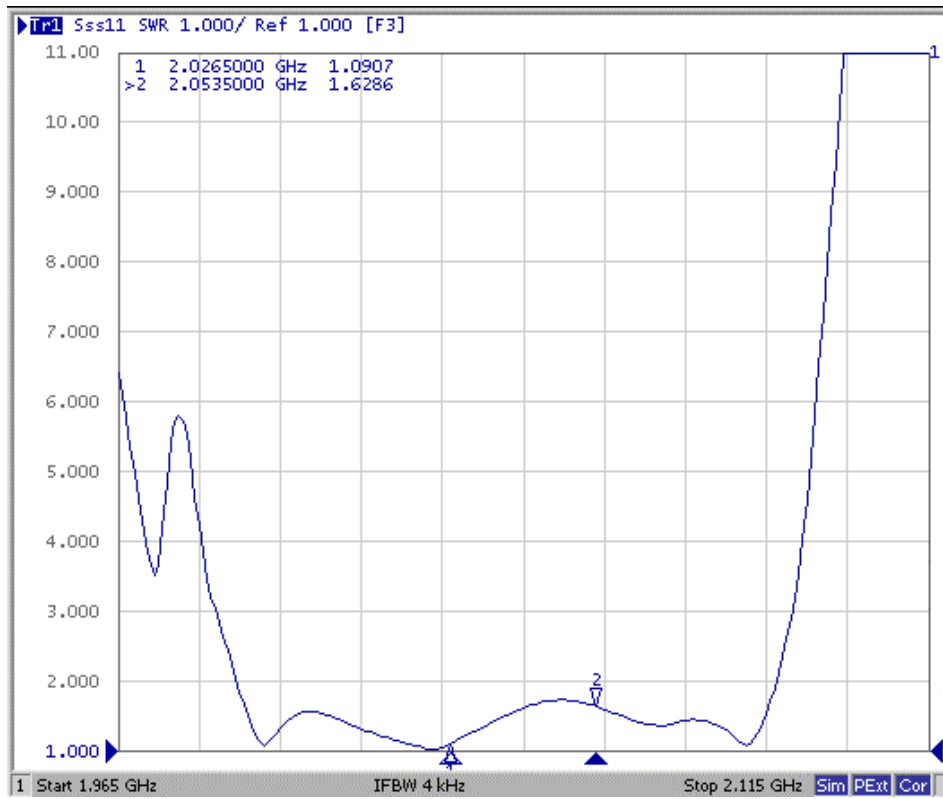


F. Frequency Characteristics :

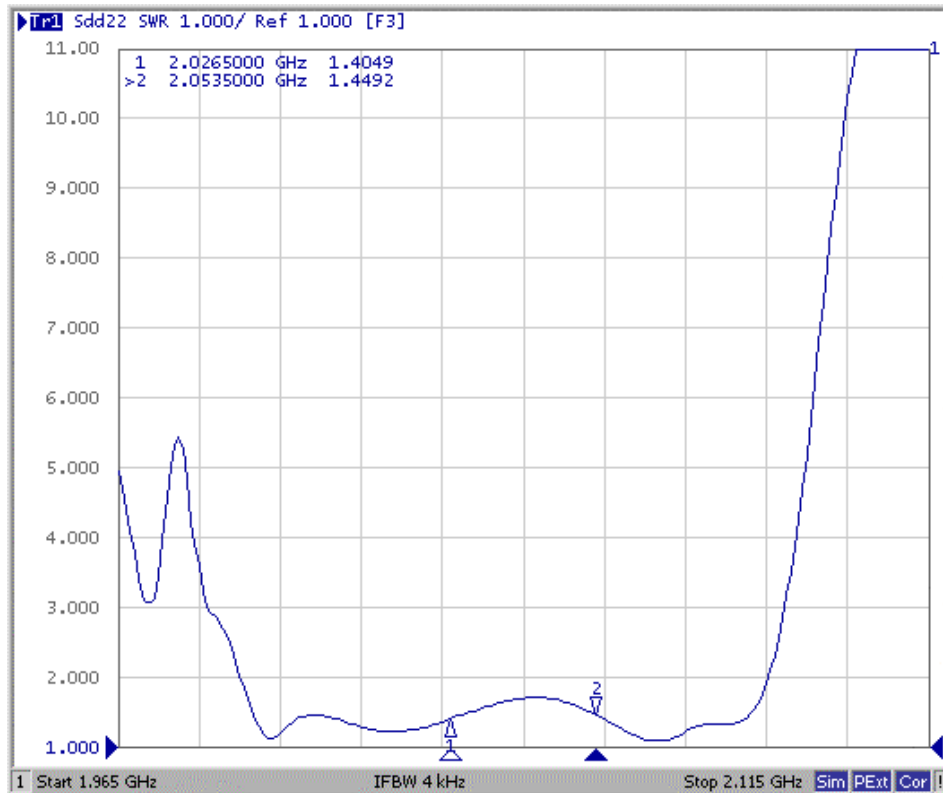


Reflection Functions :

S11



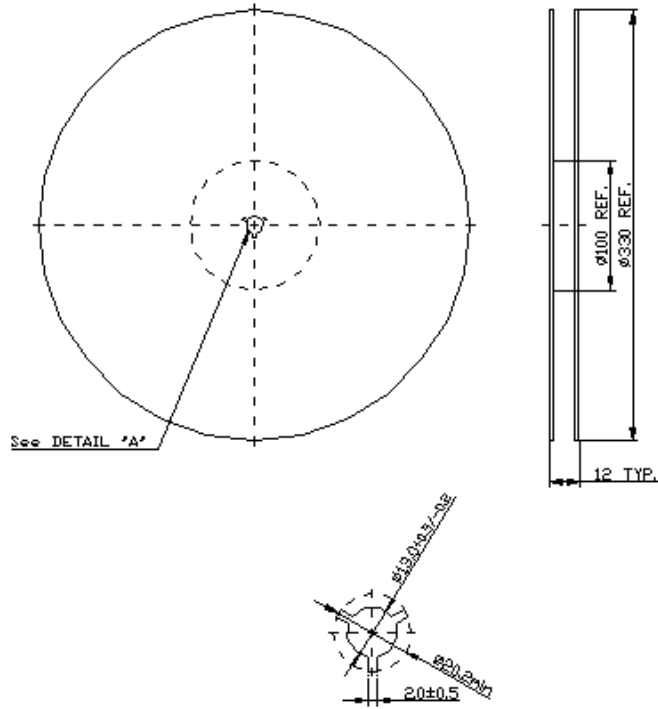
S22



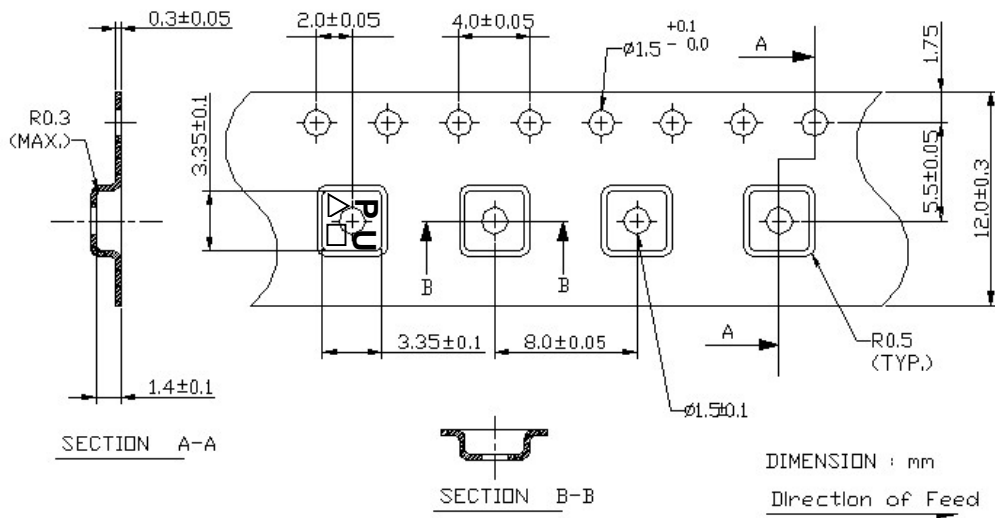
G. PACKING:

1. REEL DIMENSION

(Reel Count : 7''=1000 ; 13''=3000)



2. TAPE DIMENSION



H. RECOMMENDED REFLOW PROFILE :

