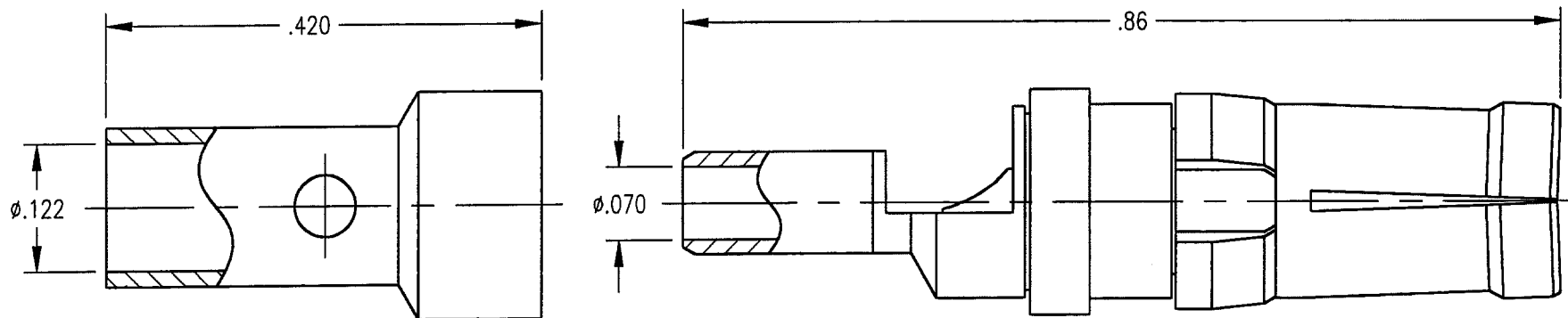


DWG. NO. 201-510-0630G		
REV	DESCRIPTION	BY / DATE
C	RELEASE PER NPB 1568	KJT / 10/29/99
		APPRO



NOTES:

1. MATERIALS:

- REAR BODY AND CONTACT: BRASS PER ASTM B16
- FRONT BODY: BERYLLIUM COPPER PER ASTM B196
- CLIP RING: BERYLLIUM COPPER PER ASTM B194
- FERRULE: BRASS PER ASTM B16
- INSULATOR: TEFLON PER ASTM D1710

2. FINISH:

- BODIES AND CONTACT: .000030 MIN. GOLD PER MIL-G-45204 OVER .000050 MIN. NICKEL PER QQ-N-290
- CLIP RING: .000100 MIN. NICKEL PER QQ-N-290 OVER COPPER FLASH
- FERRULE: .000005 MIN. GOLD PER MIL-G-45204 OVER .000050 MIN. NICKEL PER QQ-N-290

- 3. FOR USE WITH RG-316 OR EQUIVALENT CABLE.
- 4. FOR CABLING SEE CABLING PROCEDURE 5-01.

PER ASME Y14.5M-1994 UNLESS OTHERWISE SPECIFIED: DIMENSIONS ARE IN INCHES OR INCHES/MM TOLERANCES: DECIMALS .XX ± .01/0.254 XXX ± .005/0.127 ANGLES ± 2°		Litton Winchester Electronics/RETCONN <small>400 Park Road Wallingford, Connecticut 06495</small>
CUSTOMER DRAWING		
DRAWN: KJT DATE: 10/29/99 CHECKED: [Signature] DATE: 10/29/99 APPROVED: [Signature] DATE: 10/29/99		TITLE: STRAIGHT RDM RECEPTACLE SCALE: 6:1 PART NO: 201-510-0630G SH. OF REV: 1 OF 1 C