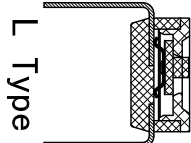
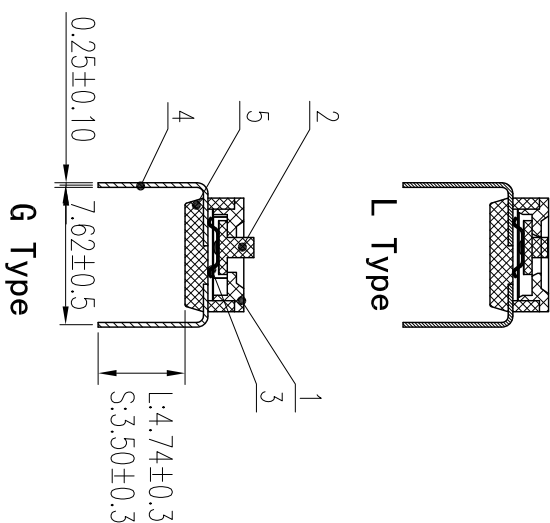
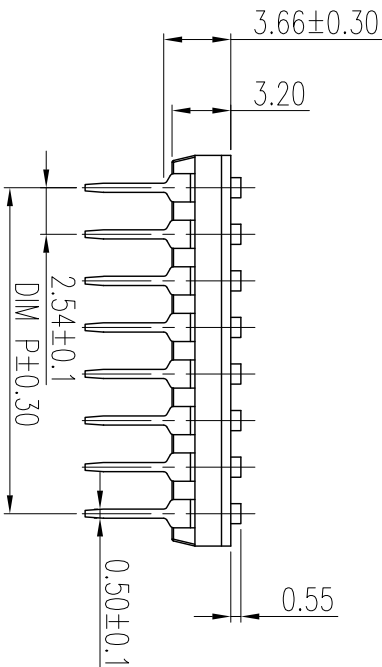
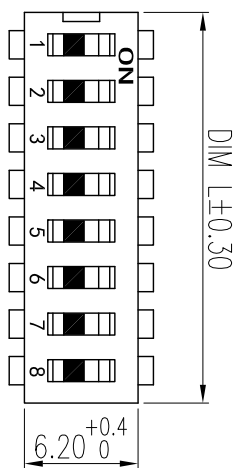
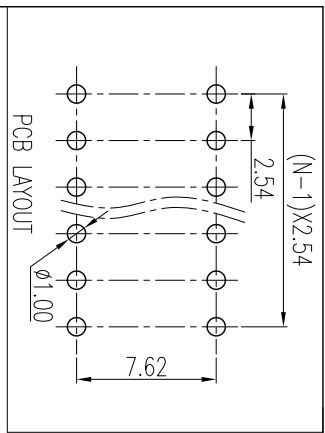


REV	ECN	CONTENT	CHECK	DATE
V0.0		初版发行	YZG	2017.03.12
V1.0		整理图纸	WL	2019.09.25

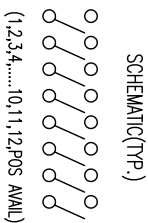
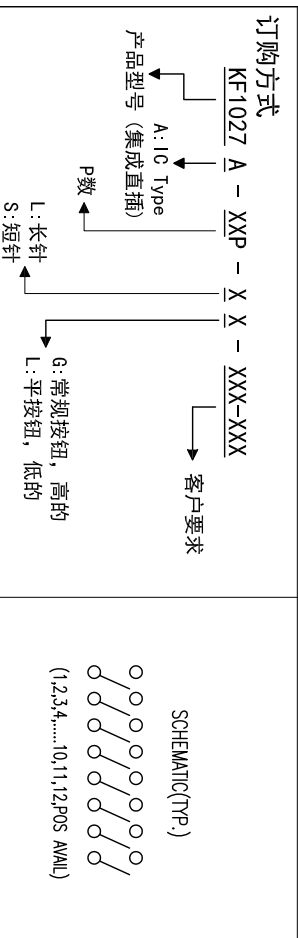


L Type

G Type

- 技术要求:
- 额定电流: 25mA, 24VDC (开与关切换时) 100mA, 50VDC (开与关不切换时)
  - 接触阻抗:  $\leq 50m\Omega$  (初始),  $\leq 100m\Omega$  (寿命测试后)
  - 绝缘电阻:  $\geq 100M\Omega / 500VDC$
  - 耐电压: 500VAC/1minute
  - 拨动力: 1000g max
  - 拨动行程: 0.9mm
  - 机械寿命:  $\geq 2000$  cycles
  - 电气寿命:  $\geq 2000$  cycles/25mA, 24VDC
  - 使用温度:  $-40^\circ C \sim +85^\circ C$
  - 存储温度:  $-40^\circ C \sim +85^\circ C$
  - 符合RoHS要求

焊接说明:  
 波峰焊接: 250 ± 10°C, 5S max  
 手工焊接: 30W电烙铁, 320 ± 5°C, 3S max  
 焊接前保持开关在“OFF”状态



订购方式  
 KF1027 A - XXP - X X - XXX-XXX  
 A: IC Type  
 产品型号 (集成直插)  
 P: 客户要求  
 L: 长针  
 S: 短针  
 G: 常规按钮, 高的  
 L: 平按钮, 低的

General tolerance in mm		radii and chamfers		shorter angle side		=		//	
over	to	over	to	over	to	over	to	over	to
±0.15	±0.2	±0.25	±0.3	±0.5	±0.8	±0.2	±0.5	±1.0	±1°
3	6	30	120	4.00	1000	3	6	10	50
to	to	to	to	to	to	to	to	to	to
0	3	6	30	4.00	1000	3	6	10	50
to	to	to	to	to	to	to	to	to	to
3	6	30	120	4.00	1000	3	6	10	50
to	to	to	to	to	to	to	to	to	to

Poles	Dim P	Dim L
1P	—	3.54
2P	2.54	6.08
3P	5.08	8.62
4P	7.62	11.16
5P	10.16	13.70
6P	12.70	16.24
7P	15.24	18.78
8P	17.78	21.32
9P	20.32	23.86
10P	22.86	26.40
11P	25.40	28.94
12P	27.94	31.48

序号	零件名称	零件编码	数量	材质	备注
1	底座	\	1	工程塑料	UL94V-0
2	PIN针	\	2P	铜合金	镀金
3	弹片	\	P	铜合金	触点镀金
4	拨柄	\	P	工程塑料	UL94V-0
5	盖板	\	1	工程塑料	UL94V-0

APP.	DATE	2019.9.25	NAME	KF1027A-XXP-XX-ON-XXX
CHK.	DATE	2019.9.25	DWGNO.	W20004311
DWG	DATE	2019.9.25	SHEET	1/1
UN	DATE	2019.9.25	PROJECTION-METHOD	◎

凯峰电子  
 KAIFENG ELECTRONICS CO., LTD